



HAZARDOUS PIPELINE

City of La Center, Planning Services
305 NW Pacific Highway
La Center, WA 98629
T/ 360.263.7665
F/ 360.263.7666

What is a hazardous pipeline?

La Center is bisected by a large diameter, high pressure natural gas pipeline operated by Williams Northwest Pipeline.

What's the worst that could happen?

Although rare, such pipelines have had catastrophic failures. Using a federal formula, the City has calculated the "potential impact radius" to be 641 feet. This is the area that would see significant explosive or fire impacts from a catastrophic failure.

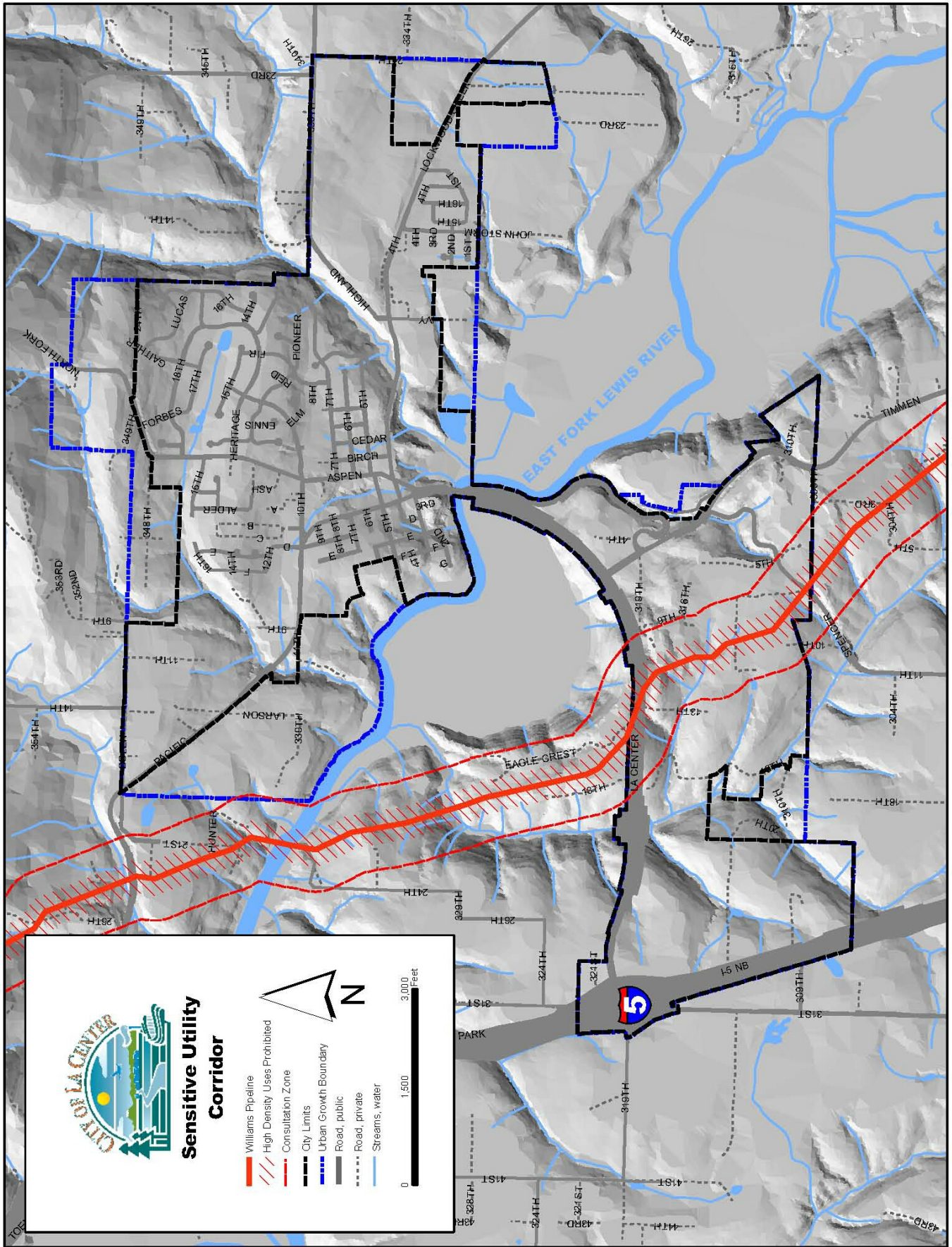
- Tiger Pass, LA (1996) – An underwater 12-inch high-pressure natural gas transmission pipeline was ruptured by a dredge anchor. The released gas enveloped the stern of the dredge and accompanying tug and quickly ignited, destroying both vessels. All 28 crewmembers escaped harm.
- Kalama, WA (1997) - A 26-inch high-pressure natural gas transmission pipeline failed due to ground movement caused by saturated soils. The escaping gas caught fire and charred two to three acres of forest.
- Carlsbad, NM (2000) - A 30-inch diameter natural gas transmission pipeline failed due to severe internal corrosion, caught fire and burned for 55 minutes. Twelve people were killed and their three vehicles destroyed. Two nearby steel suspension bridges for gas pipelines crossing the river were extensively damaged.

What's the city's interest in hazardous pipelines?

The City has adopted a local law that requires disclosure of the pipeline's proximity whenever land changes hands. The law prohibits higher-occupancy uses such as schools or churches within 250' of the pipeline, and requires a public hearing for such uses within the outer portion of the overlay.

But I still have questions!

Please contact the Public Works Department located at 305 NW Pacific Highway, La Center, WA 98629 T/ 360.263.7665 F/ 360.263.7666



CHICAGO LA CENTER
Sensitive Utility Corridor

- Williams Pipeline
 - High Density Uses Prohibited
 - Consultation Zone
 - City Limits
 - Urban Growth Boundary
 - Road, public
 - Road, private
 - Streams, water
- 0 1,500 3,000 Feet