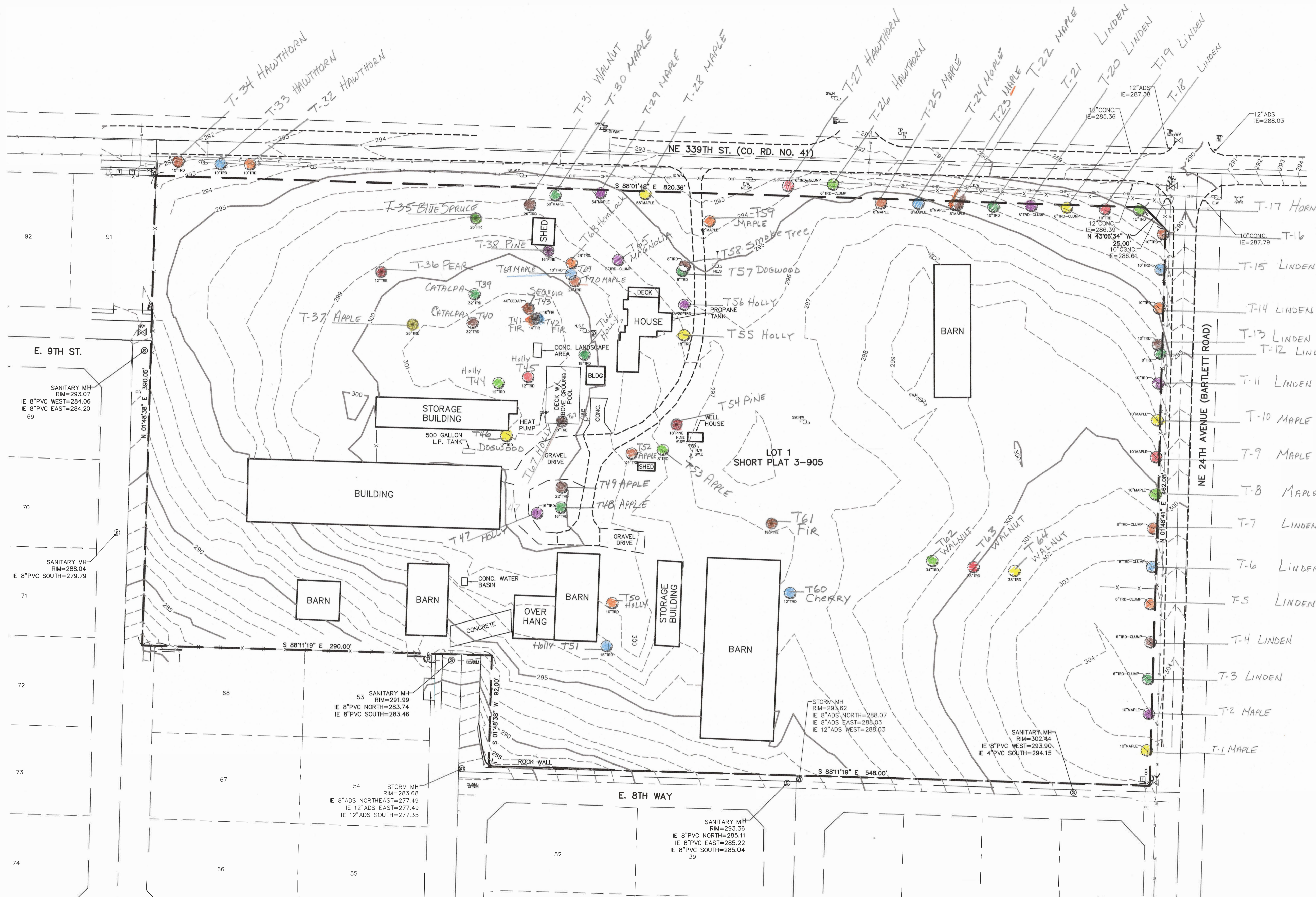
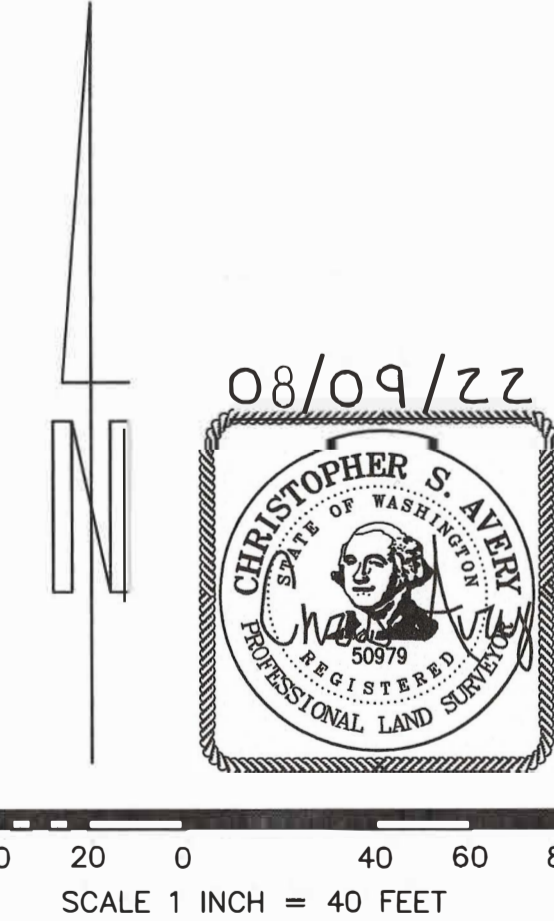


TREE INVENTORY MAP

IN A PORTION OF GOVERNMENT LOT
2, IN THE NW 1/4 OF
THE NE 1/4 OF SECTION 2
T. 4 N., R. 1 E., W.M.
CITY OF LACENTER,
CLARK COUNTY, WASHINGTON



- LEGEND:**
- INDICATES WATER VALVE
 - INDICATES FIRE HYDRANT
 - INDICATES WATER METER
 - INDICATES POWER POLE WITH DIRECTION OF OVERHEAD LINES
 - INDICATES GUY ANCHOR
 - INDICATES LIGHT POLE
 - INDICATES SIGN
 - INDICATES TELEPHONE PEDIESTAL
 - INDICATES GAS MARKER
 - INDICATES TRANSFORMER
 - INDICATES SEPTIC SYSTEM LID
 - INDICATES FIBER OPTIC PEDIESTAL
 - INDICATES HEAT PUMP
 - INDICATES STORM SEWER MANHOLE
 - INDICATES SANITARY SEWER MANHOLE
 - INDICATES EVERGREEN TREE WITH TRUNK DIAMETER AND TYPE
 - INDICATES DECIDUOUS TREE WITH TRUNK DIAMETER AND TYPE
 - INDICATES BOUNDARY
 - INDICATES EDGE OF ASPHALT
 - INDICATES EDGE OF CONCRETE
 - INDICATES EDGE OF GRAVEL
 - INDICATES 5 FOOT INTERVAL CONTOUR
 - INDICATES 1 FOOT INTERVAL CONTOUR
 - INDICATES FENCE LINE
 - INDICATES WATER LOCATE
 - INDICATES OVERHEAD POWER
 - INDICATES GAS LOCATE
 - INDICATES ELECTRIC LOCATE



SCALE 1 INCH = 40 FEET

BASIS OF BEARING:
 PERROTT SHORT PLAT
 BOOK 3, PAGE 905

BENCHMARK:
 BRASS DISK IN TOP OF CONCRETE POST IN THE CENTER OF ROADSIDE DITCH OF N.W. 339TH STREET.
 POINT NAME: 900_NW339ST
 ELEVATION: 146.968 NGVD 29/47
 CALCULATED BY CLARK COUNTY GEOD MODEL

SCALE: -1"=40'-
 JOB NO. 22-318-
 DATE: 08-09-22-
 CALC BY: -CSA-
 DRAWN BY: -NG-
 CHECKED BY: CSA
 SHEET 1 OF 1

MINISTER-GLAESER SURVEYING INC.
 2200 E. EVERGREEN BLVD.
 VANCOUVER, WA 98661
 (360) 694-3313