



MIN 12"x18" METAL SIGN  
PAINTED BLUE ON WHITE.  
MOUNT SIGN ON BUILDING  
WALL OR ON A POST  
FROM 3'-0" TO 5'-0"  
ABOVE PARKING SURFACE.  
POST MOUNTED SIGNS ARE  
NOT TO INTERFERE WITH  
ACCESSIBLE ROUTE OF  
TRAVEL IN FRONT OF  
PARKING STALL NOR  
LOCATED WITHIN AUTO  
BUMPER OVERHANG SPACE.

ADD 'VAN ACCESSIBLE' SIGN  
AT SPACES MARKED 'VAN'  
ON SITE PLAN.

**2 DISABLED PARKING**  
NOT TO SCALE

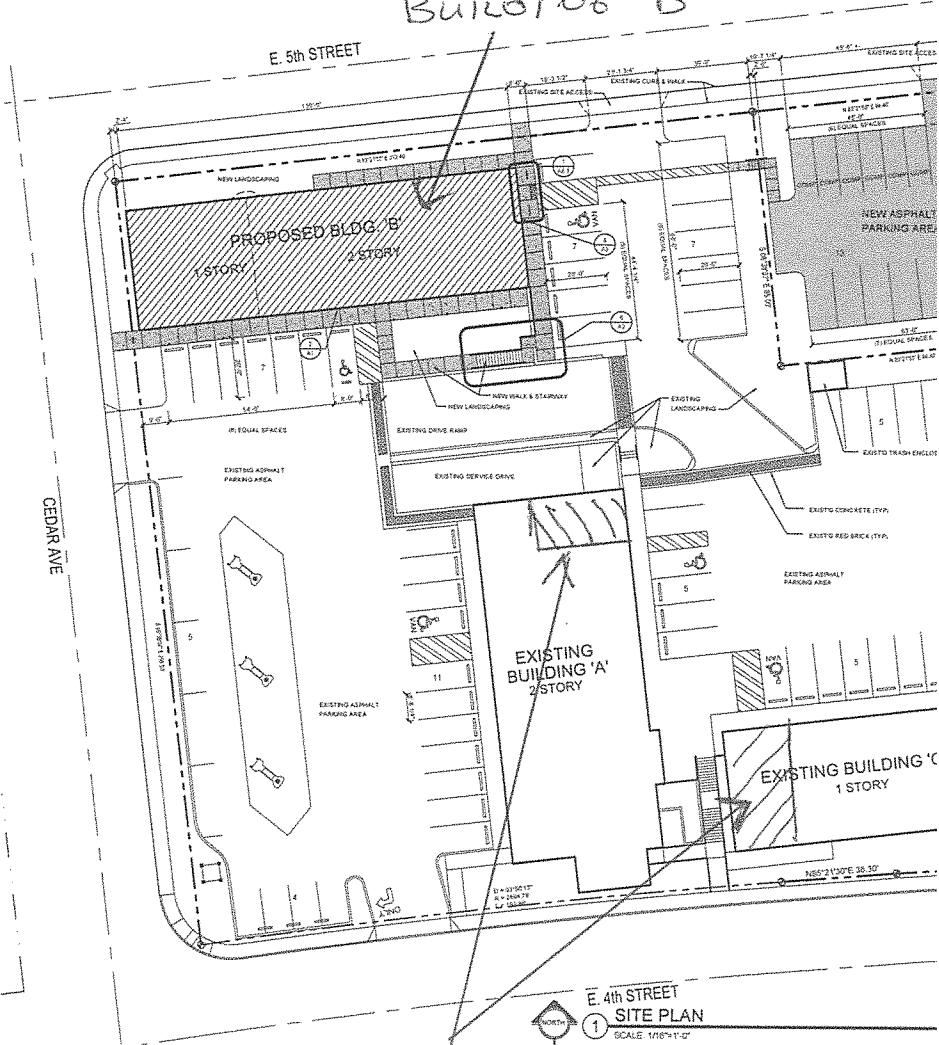
**ZONING/CODE INFORMATION**

JURISDICTION: CITY OF LA CENTER  
PROPERTY OWNER: GENTEEL INVESTMENTS, INC.  
PO BOX 1434 LA CENTER WA 98603  
PHONE (360) 921-8244  
CONTACT: ROY HEIKKALA  
BUILDING CODE:  
2015 I.B.C. W/ WASH. AMENDMENTS  
2015 INTERNATIONAL MECHANICAL CODE  
2015 INTERNATIONAL FIRE CODE  
2015 UNIFORM PLUMBING CODE  
2014 NATIONAL ELECTRICAL CODE  
2015 WASHINGTON STATE ENERGY CODE  
2017 I.C.C. A117.1  
ZONING CODE: CITY OF LA CENTER ZONING ORDINANCE  
CONDITIONAL USE PERMIT: 01-4-CUP  
ZONE: GC  
PUBLIC WATER SYSTEM: CITY OF LA CENTER  
SANITARY SEWER: CITY OF LA CENTER  
STORM WATER SYSTEM: CITY OF LA CENTER  
SITE AREA: 69,000 S.F. OR 1.58 ACRES  
OCCUPANCY: B  
OCCUPANCY SEPARATION: N.A.  
SETBACKS: FRONT - NONE  
SIDE - NONE  
SIDE (INTERIOR) - 7'-6" (UR ZONE)  
REAR - 20'-0" TYPE OF CONSTRUCTION: TYPE V-B  
ALLOWABLE FLOOR AREA: 9,000 S.F.  
ACTUAL FLOOR AREA: 7,800 S.F.  
NO. OF STORIES: 2 STORIES

BLDG	FLOOR	AREA	PARK'G @ 400S F./STALL	
			REQ'D	ACTUAL
A'	UPPER	6,030 S.F.	15.00	
	GRND	6,288 S.F.	16.00	
B'	UPPER	3,600 S.F.	9.00	
	GRND	5,200 S.F.	13.00	
C'	GRND	3,520 S.F.	9.00	
	BASEMNT	628 S.F.	2.00	
TOTAL		25,229 S.F.	64.00	74.00

EMPLOYEE PARKING = 10 STALLS = 20 EMPLOYEES  
REQUIRED ACCESSIBLE PARKING - TABLE 1109: 51-75 = 3 STALLS  
PROVIDED ACCESSIBLE PARKING - 5 STALLS (VAN STALLS)  
STANDARD SIZE STALLS (9x20) = 69 CARS = 93%  
COMPACT SIZE STALLS (7.5x15) = 5 CARS = 7%

NEW LOCATION  
TEREJA'S SCHOOL  
BUILDING B



EXISTING TEREJA'S  
SCHOOL BLDGS A & C  
1600 # TOTAL