

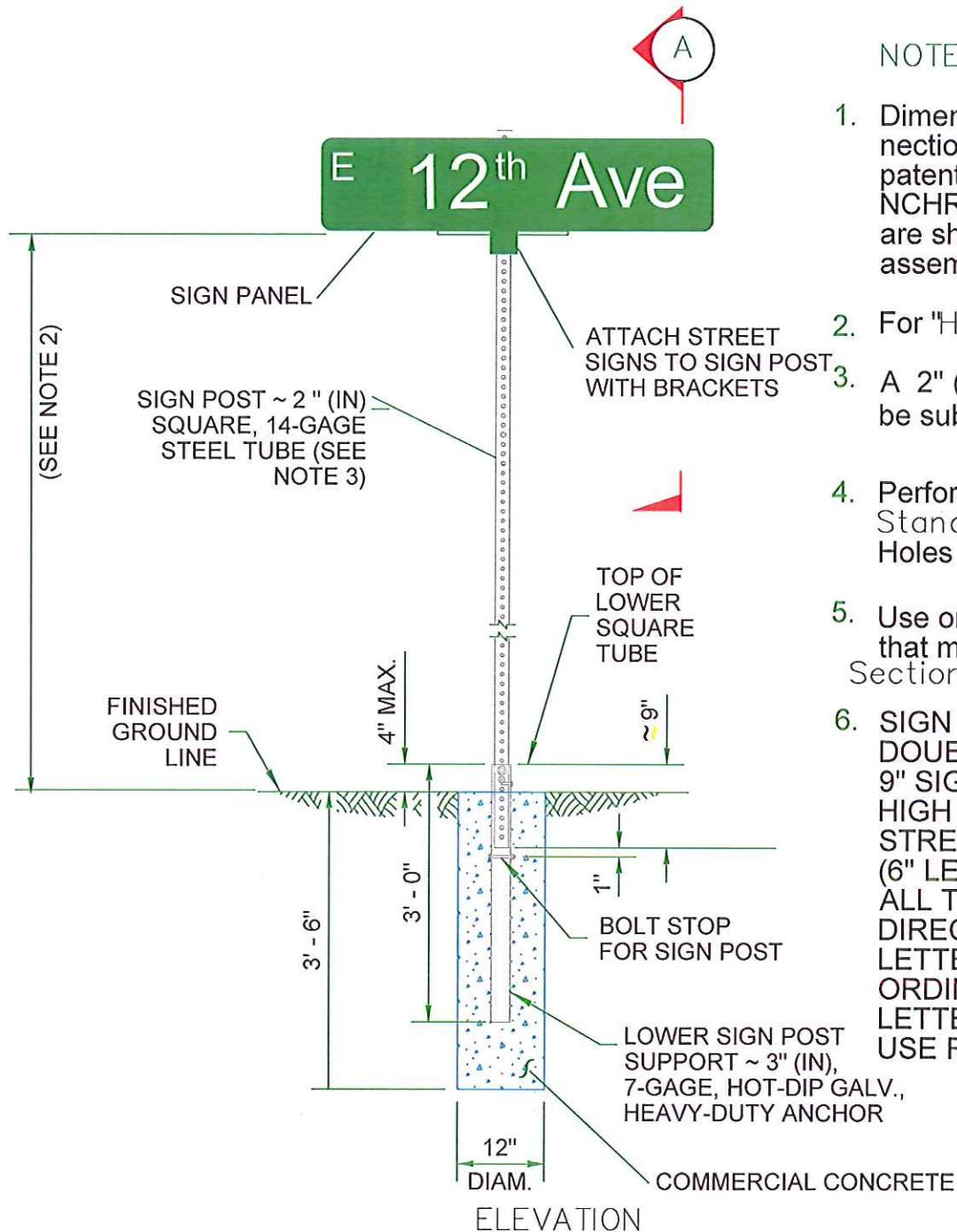
ELEVATION

TYPE ST-4 SIGN SUPPORT

## NOTES

1. Dimensions for the parts used to assemble the base connections are intentionally not shown. Base connections are patented, manufactured products that are in compliance with NCHRP 350 crash test criteria. The base connection details are shown on this plan only to illustrate how the parts are assembled.
2. MINIMUM SIGN HEIGHT 7' PER ADA
3. A 2" (in) post with a 2 1/4" (in) PSST anchor or a be substituted.
4. Perforated square steel post shall meet the requirements of Standard Specification, Section 9-06  
Holes not punched out
5. Use only base connection manufacturer supplied hardware that meets the requirements of Standard Specification Sections 9-06 and 9-28
6. SIGN THICKNESS 0.125" THICKNESS  
DOUBLE SIDED SIGNS  
9" SIGN HEIGHT  
HIGH INTENSITY RETRO-REFLECTIVE WITH BORDER  
STREET NAMES MIXED CASE  
(6" LETTERING WITH 4.5" LOWER CASE  
ALL TEXT TOP ALIGNED  
DIRECTION: ABBREVIATED, ALL CAPITALS,, 4"  
LETTERING (AKA E. NW)  
ORDINAL SUFFIXES(st, nd, rd. th) LOWERCASE, 4"  
LETTERING.  
USE RIVETS FOR SIGN CONNECTION.

## STEEL SIGN SUPPORT TYPE ST-4 INSTALLATION DETAILS

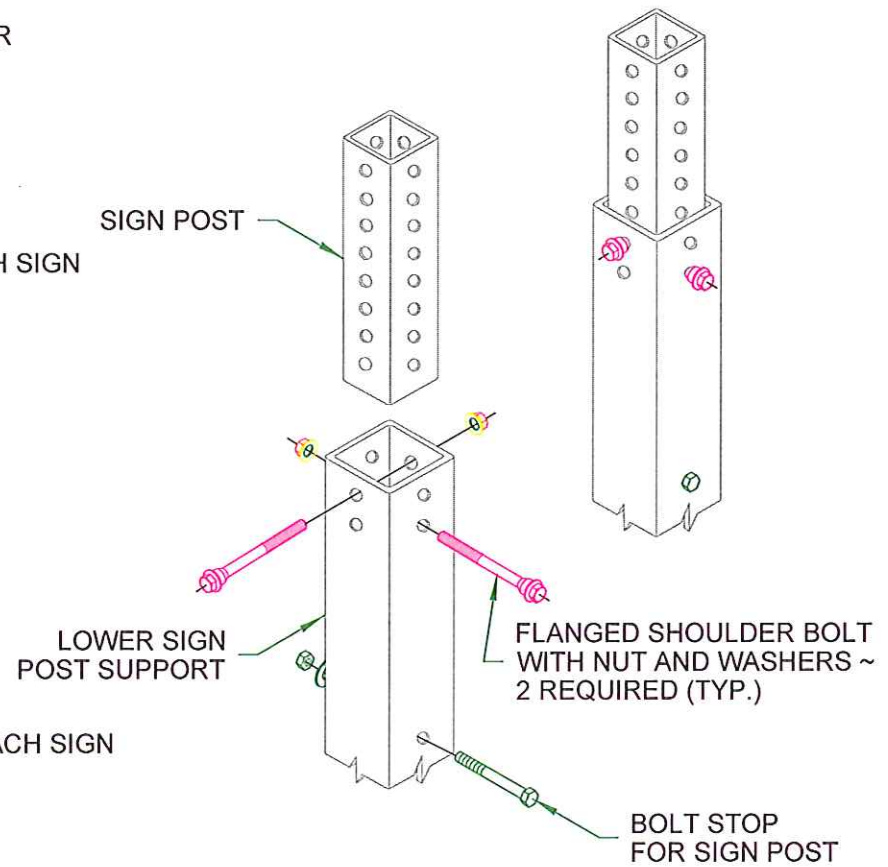
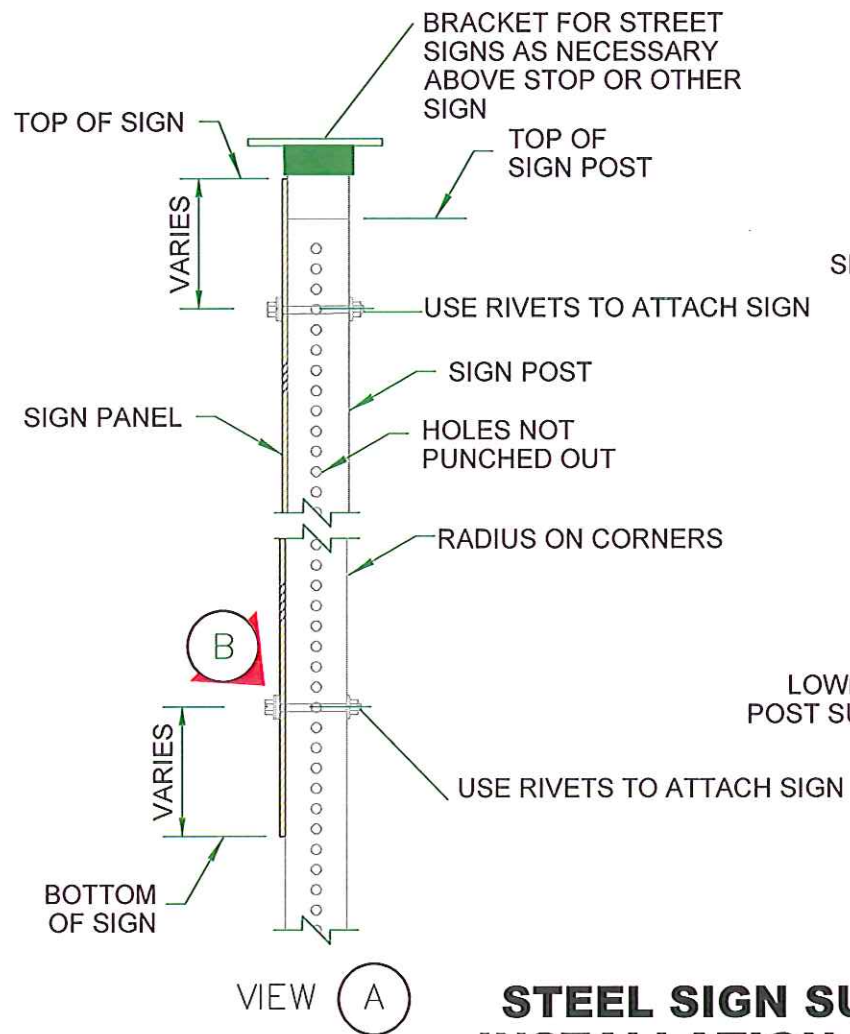


ELEVATION  
TYPE ST-4 SIGN SUPPORT

## NOTES

1. Dimensions for the parts used to assemble the base connections are intentionally not shown. Base connections are patented, manufactured products that are in compliance with NCHRP 350 crash test criteria. The base connection details are shown on this plan only to illustrate how the parts are assembled.
2. For "H1", 102" minimum for street signs.
3. A 2" (in) post with a 2 1/4" (in) PSST anchor or a be substituted. See Contract Plans.
4. Perforated square steel post shall meet the requirements of Standard Specification, Section 9-06  
Holes not punched out
5. Use only base connection manufacturer supplied hardware that meets the requirements of Sections 9-06 and 9-28
6. SIGN THICKNESS 0.125" THICKNESS  
DOUBLE SIDED SIGNS  
9" SIGN HEIGHT  
HIGH INTENSITY RETRO-REFLECTIVE WITH BORDER  
STREET NAMES MIXED CASE  
(6" LETTERING WITH 4.5" LOWER CASE  
ALL TEXT TOP ALIGNED  
DIRECTION: ABBREVIATED, ALL CAPITALS,, 4"  
LETTERING (AKA E. NW)  
ORDINAL SUFFIXES(st, nd, rd. th) LOWERCASE, 4"  
LETTERING.  
USE RIVETS FOR SIGN CONNECTION.

## STEEL SIGN SUPPORT TYPE ST-4 INSTALLATION DETAILS



**STEEL SIGN SUPPORT  
INSTALLATION DETAILS**

TYPE ST-4