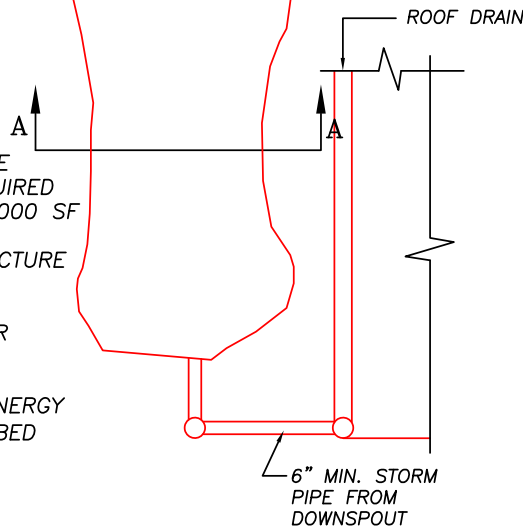


CB OR MANHOLE
SUMP W/ SOLID LID
AND OVERFLOW PIPE
WITH ORIFICE

CONNECT OUTLET OF DETENTION
POND TO DITCH OR APPROVED
STORM SYSTEM

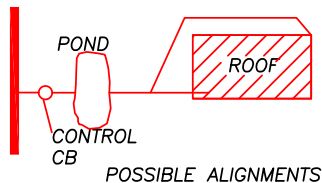
DETENTION POND



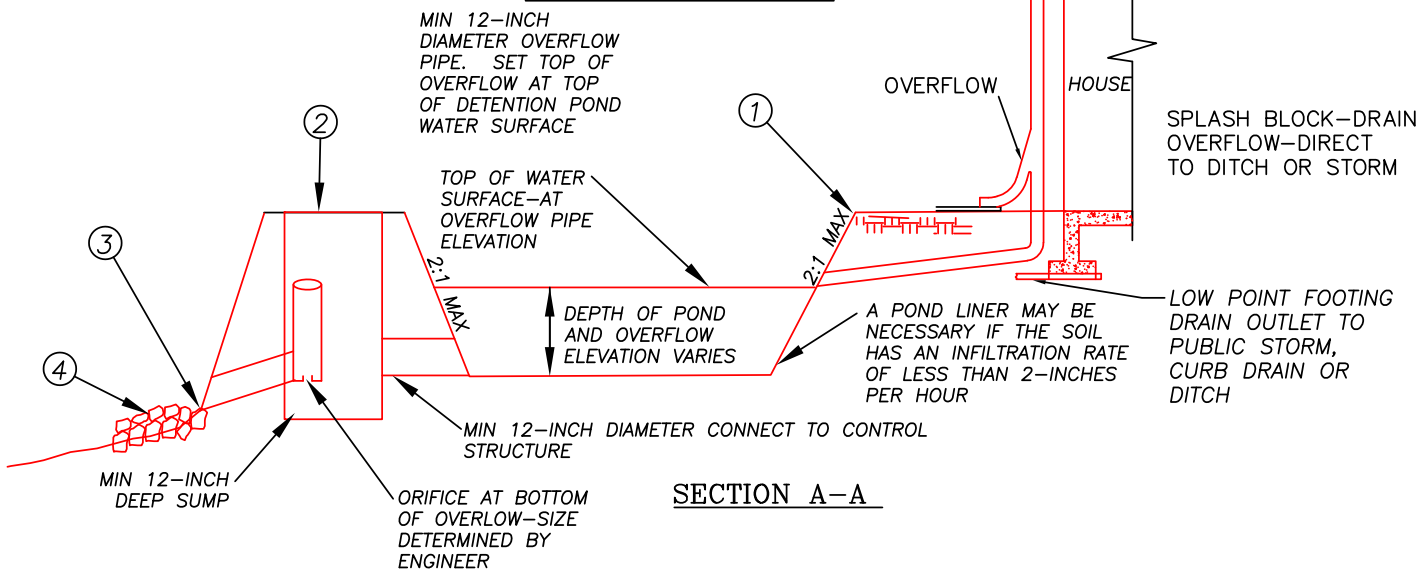
PLAN VIEW

NOTES:

- 1 DETENTION POND SHALL BE USED AS AN ALTERNATE TO ON-SITE DETENTION PIPE OR OTHER QUANTITY CONTROL SYSTEM AS REQUIRED BY THE CITY ORDINANCE FOR ADDED IMPERVIOUS AREA OVER 2,000 SF
- 2 CONTROL STRUCTURE WITH OVERFLOW PIPE AND ORIFICE. STRUCTURE MAY BE A CATCH BASIN OR MANHOLE PER CITY DETAILS.
- 3 CONNECT OVERFLOW PIPE TO EXISTING DITCH, STORM SEWER, OR OTHER OUTFALL PER ENGINEER
- 4 RIP RAP SHALL BE PLACED AT OUTFALL OF STORM PIPE FOR ENERGY DISSIPATION. RIP RAP SHALL MEET WSDOT 9-03.11(2) STREAMBED COBBLES, 6-INCH COBBLES MINIMUM DIAMETER.



NOTE: THE SIZE AND DEPTH OF POND SHALL BE DETERMINED BY THE ENGINEER AND SHALL BE USED FOR RESIDENTIAL STRUCTURES ONLY.



**RESIDENTIAL DOWNSPOUT
DETENTION POND**

PLAN #



CITY OF LA CENTER APPROVED

REVISIONS: DATE: DRAWN: DESIGNED:

TONY COOPER 1-30-17
CITY ENGINEER DATE

SM-20