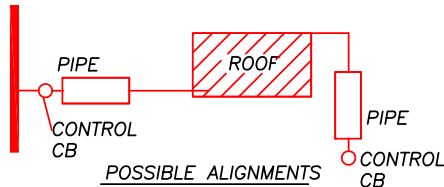
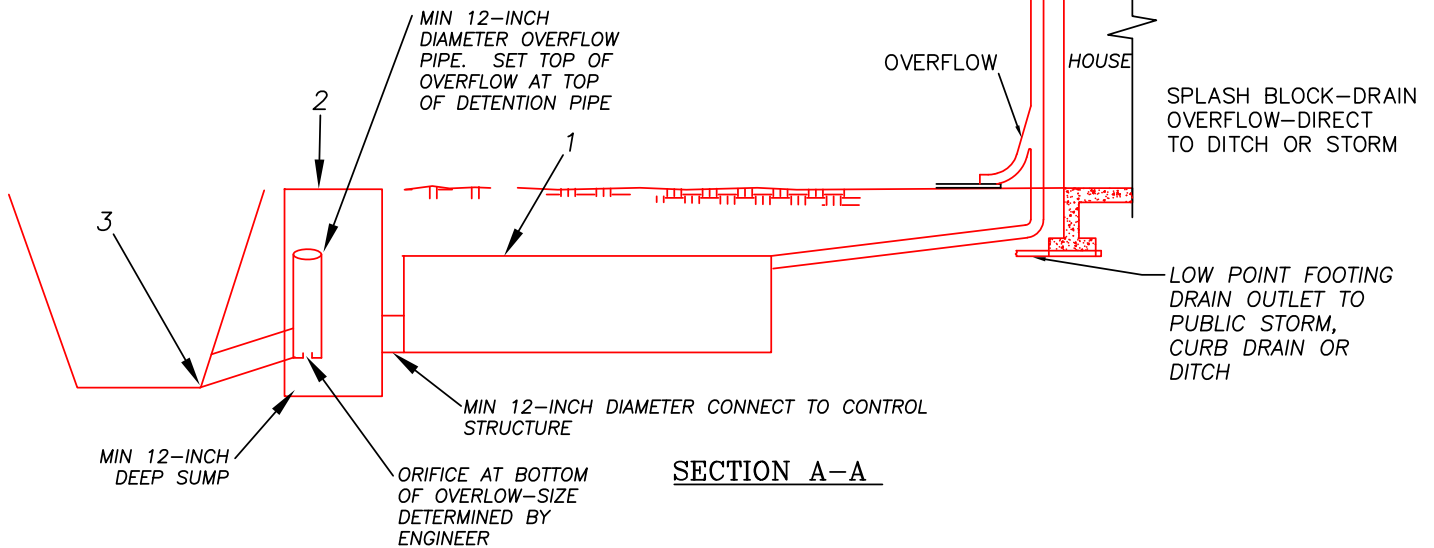


PLAN VIEW

- NOTES:**
- 1 DETENTION PIPE SHALL BE USED AS AN ALTERNATE TO ON-SITE STORM POND OR OTHER QUANTITY CONTROL SYSTEM AS REQUIRED BY THE CITY ORDINANCE FOR ADDED IMPERVIOUS AREA OVER 2,000 SF
 - 2 CONTROL STRUCTURE WITH OVERFLOW PIPE AND ORIFICE. STRUCTURE MAY BE A CATCH BASIN OR MANHOLE PER CITY DETAILS.
 - 3 CONNECT OVERFLOW PIPE TO EXISTING DITCH OR STORM SEWER PER ENGINEER



NOTE: LENGTH AND DIAMETER OF DETENTION PIPE SHALL BE DETERMINED BY THE ENGINEER



RESIDENTIAL DOWNSPOUT DETENTION PIPE

PLAN #



CITY OF LA CENTER APPROVED

TONY COOPER
CITY ENGINEER

11-9-15
DATE

REVISIONS: DATE: DRAWN: DESIGNED:

SM-19