

PRELIMINARY EARTHWORK VOLUMES	
STRIPPINGS (0.5')	21,000 CU. YDS.
EXCAVATION QUANTITY:	80,000 CU. YDS.
EMBANKMENT QUANTITY:	130,000 CU. YDS.

THE QUANTITIES TABULATED ABOVE ARE APPROXIMATE ONLY. CONTRACTOR ADVISED TO COMPUTE QUANTITIES INDEPENDENTLY FOR ESTIMATING AND/OR BIDDING PURPOSES.

**NOTES:**

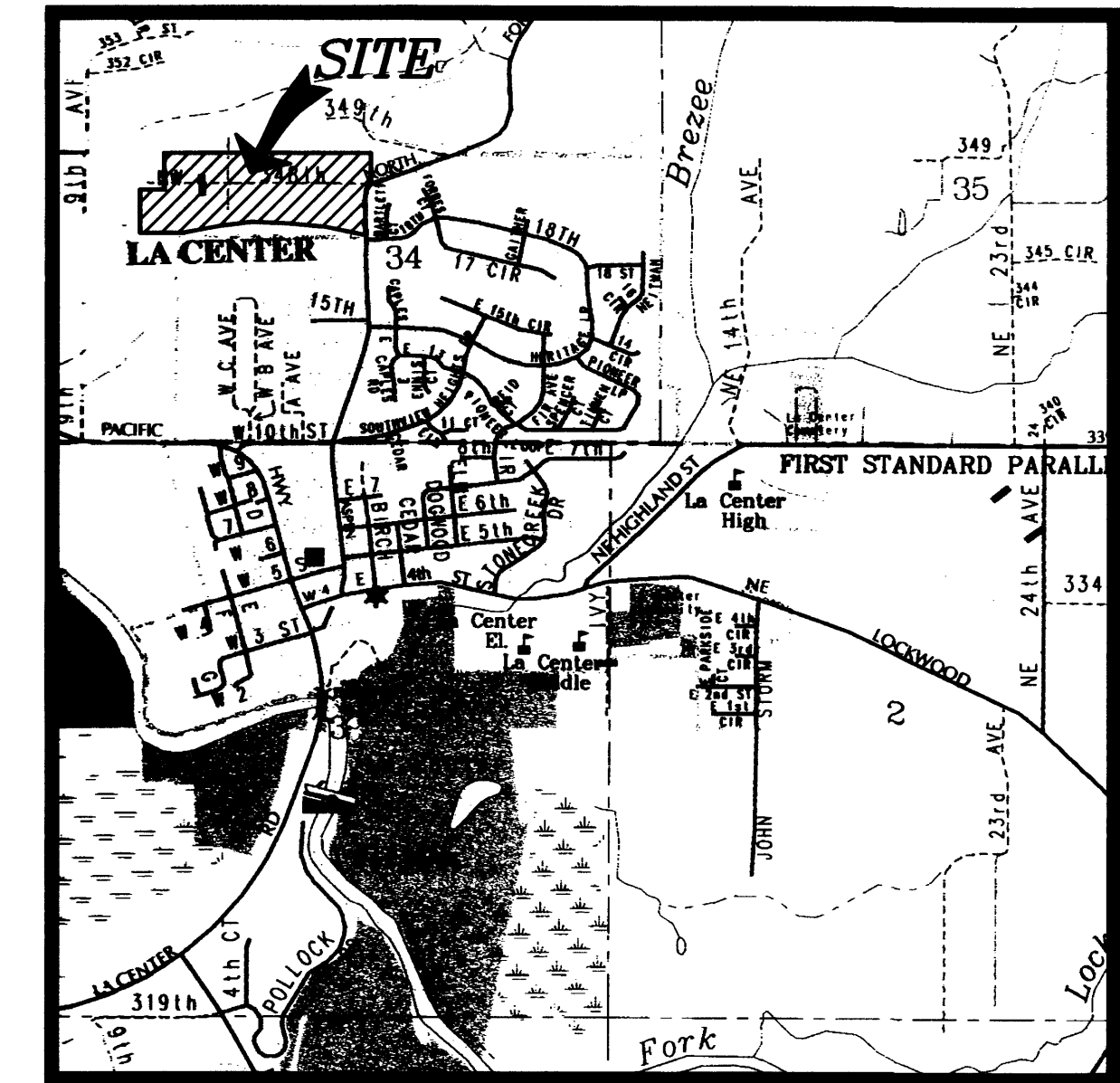
THIS PRELIMINARY GRADING PLAN INDICATES EXISTING CONTOURS AND PROPOSED FINISHED CONTOURS AT 5' INTERVALS.

PRELIMINARY PLANS FOR DRAINAGE AND EROSION CONTROL ARE SHOWN ON SEPARATE SHEETS, CONSISTENT WITH APPLICABLE PROVISIONS OF LCMC CHAPTER 18.320.

AT PRELIMINARY STAGE, IT APPEARS THAT RETAINING WALLS MAY BE NEEDED AT THE NORTHEAST CORNER OF THE PROJECT.

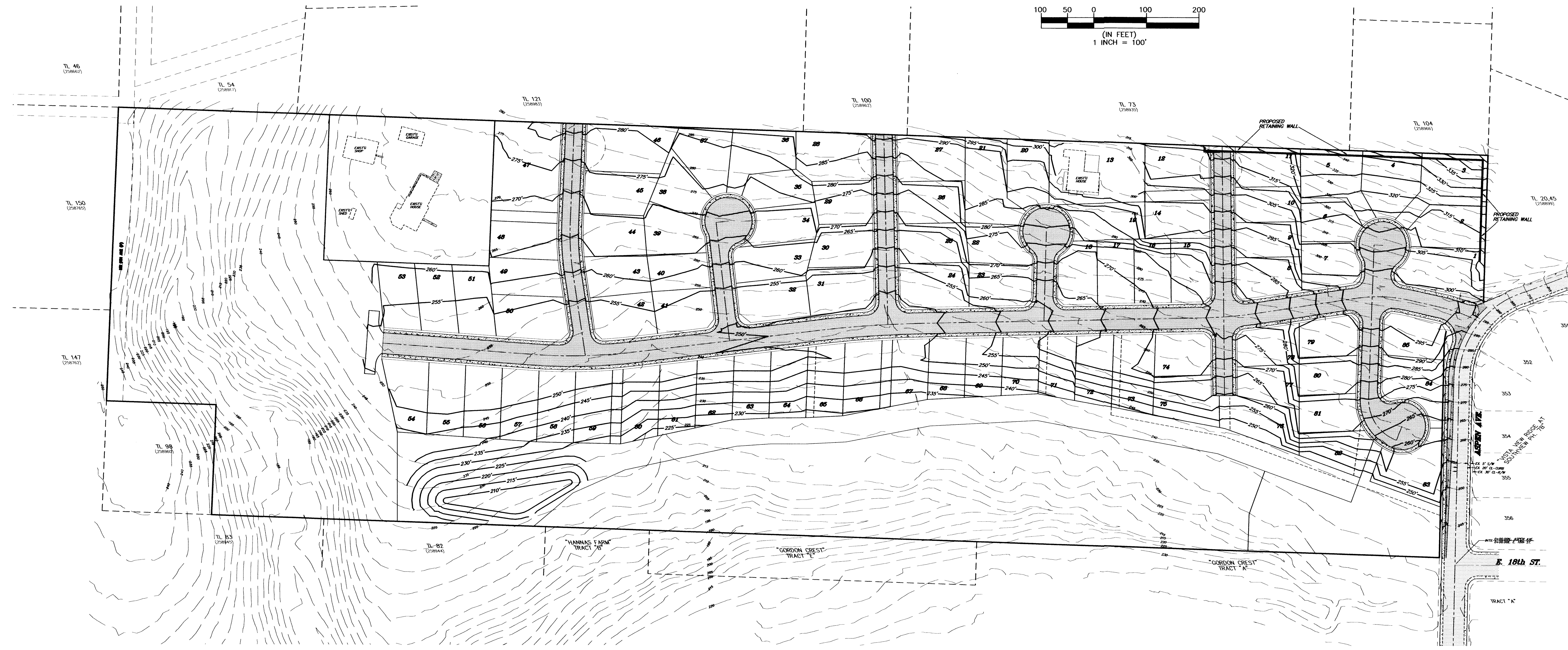
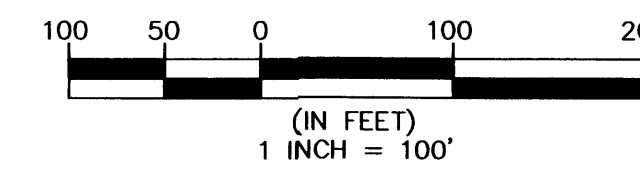
ALL EROSION CONTROL METHODS SHALL BE INDICATED ON THE FINAL CIVIL ENGINEERING PLANS PER CITY OF LA CENTER EROSION CONTROL GUIDELINES.

LEGEND	
	FINISHED CONTOURS
	EXISTING CONTOURS



VICINITY MAP

APPLICANT:  
**CARLEEN STEPHENS**  
 24600 N.E. 98th COURT  
 BATTLE GROUND, WA 98604  
 PH: 360-606-2408



**THE WOLFE GROUP, L.L.C.**  
 Land Planning, Consulting  
 & Civil Engineering  
 2401 W. Main Street, Suite 210  
 Battle Ground, WA 98604  
 (360) 687-2699

**STEPHENS HILLSIDE FARM**  
 A Residential Subdivision in the S.W.  
 1/4 of Section 34 T.5N., R.1E., W.M. in  
 the City of La Center, Clark County, WA

PRELIMINARY  
 GRADING PLAN

JOB #: 17-06  
 DESIGNED: JEW  
 DRAWN: JEW  
 APPROVED: JEW  
 DATE: FEBRUARY 2018  
 SCALE: HORIZ.: 1"=100'  
 VERT.: N/A  
 SHEET