

**RIVERSIDE ESTATES SUBDIVISION**  
 PHASE 4 NEIGHBORHOOD PARK  
 La Center, Washington

DRAWN: CB	CHECKED: CB
SCALE: 1" = 40'-0"	DATE: 06-03-20
JOB #: 20-1554	
ISSUED FOR: DA	
REVISIONS:	
△	
△	
△	
△	
△	

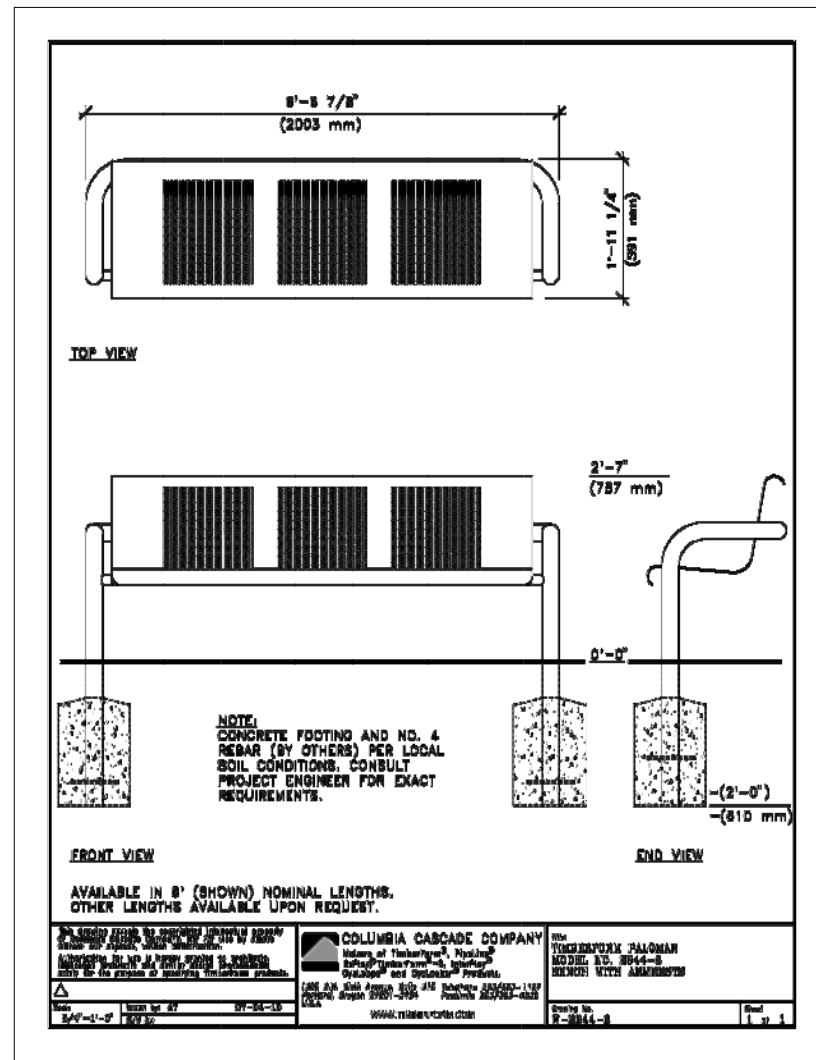
SHEET NAME:  
**PARK PLAN**  
**Exhibit A-1**

SHEET #:  
**P1**  
 OF 5

© COPYRIGHT 2020, PLANNING SOLUTIONS, INC. NO PART OF THIS DRAWING MAY BE COPIED OR REPRODUCED WITHOUT WRITTEN PERMISSION OF PLANNING SOLUTIONS, INC.

DISCLAIMER AND LIMITATIONS: ANY WORK CONTAINED HEREIN INCLUDING BUT NOT LIMITED TO PLANS AND DOCUMENTS ARE INSTRUMENTS OF SERVICE INTENDED FOR USE SOLELY WITH RESPECT TO THIS PROJECT. ALL WORK SHALL BE CONSIDERED CONCEPTUAL AND SUBJECT TO CHANGE. THESE INSTRUMENTS OF SERVICE SHALL BE CONSIDERED A WORK IN PROGRESS WHERE UNKNOWN FACTORS EXIST AND JURISDICTIONAL REQUIREMENTS HAVE NOT BEEN VERIFIED. DUE TO THE HIGH DEGREE OF UNCERTAINTY ASSOCIATED WITH A CONCEPTUAL DESIGN, THESE INSTRUMENTS OF SERVICE SHALL NOT BE USED AS THE BASIS FOR A FINANCIAL EVALUATION OR CONSTRUCTION COST ESTIMATING. NO ASSURANCES ARE OFFERED OR IMPLIED AS TO THE OVERALL FEASIBILITY OF THE PROJECT. ALL WORK SHALL BE SUBJECT TO REVIEW AND FINAL APPROVAL BY ALL APPROPRIATE FEDERAL, STATE AND LOCAL AGENCIES AND SHALL CONTAIN THE PROFESSIONAL SEAL AND SIGNATURE OF ALL REQUIRED DESIGN PROFESSIONALS PRIOR TO ANY USE OF THESE DOCUMENTS. PLANNING SOLUTIONS, INC. AND ITS CONSULTANTS SHALL BE DEEMED THE AUTHORS AND OWNERS OF THEIR RESPECTIVE INSTRUMENTS OF SERVICE AND SHALL RETAIN ALL COMMON LAW, STATUTORY AND OTHER RESERVED RIGHTS, INCLUDING COPYRIGHTS.



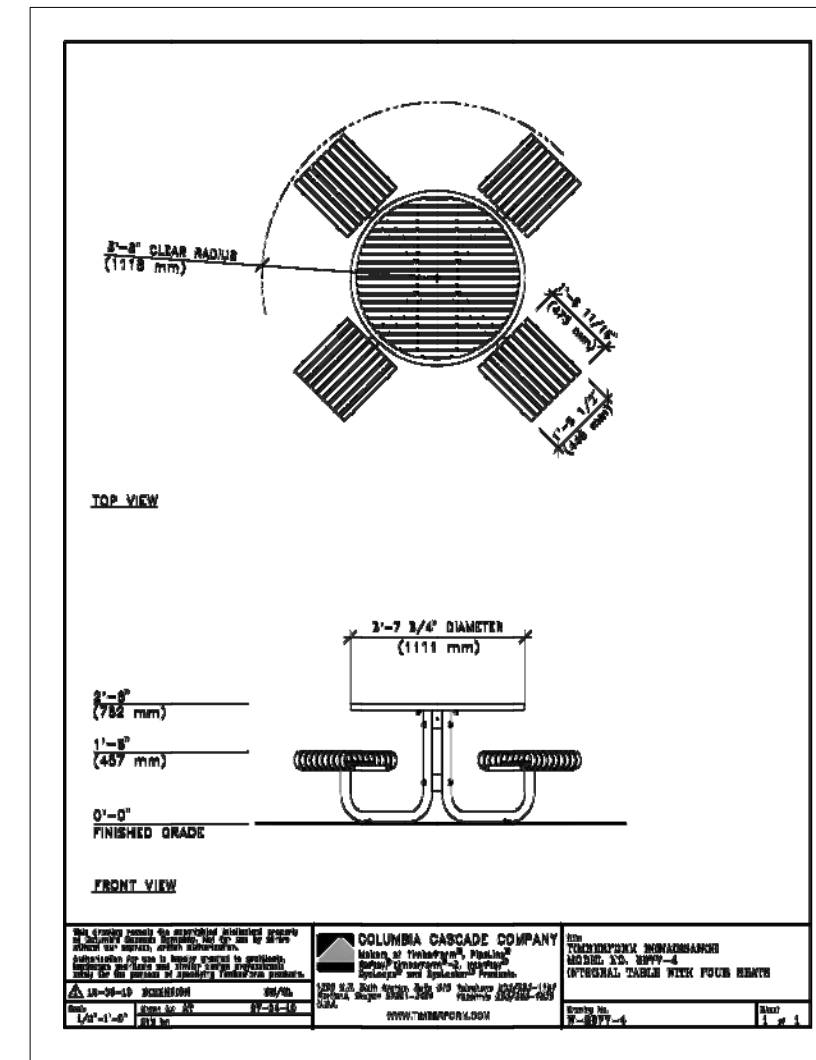


COLOR TBD

**BENCH DETAIL**

NOT TO SCALE

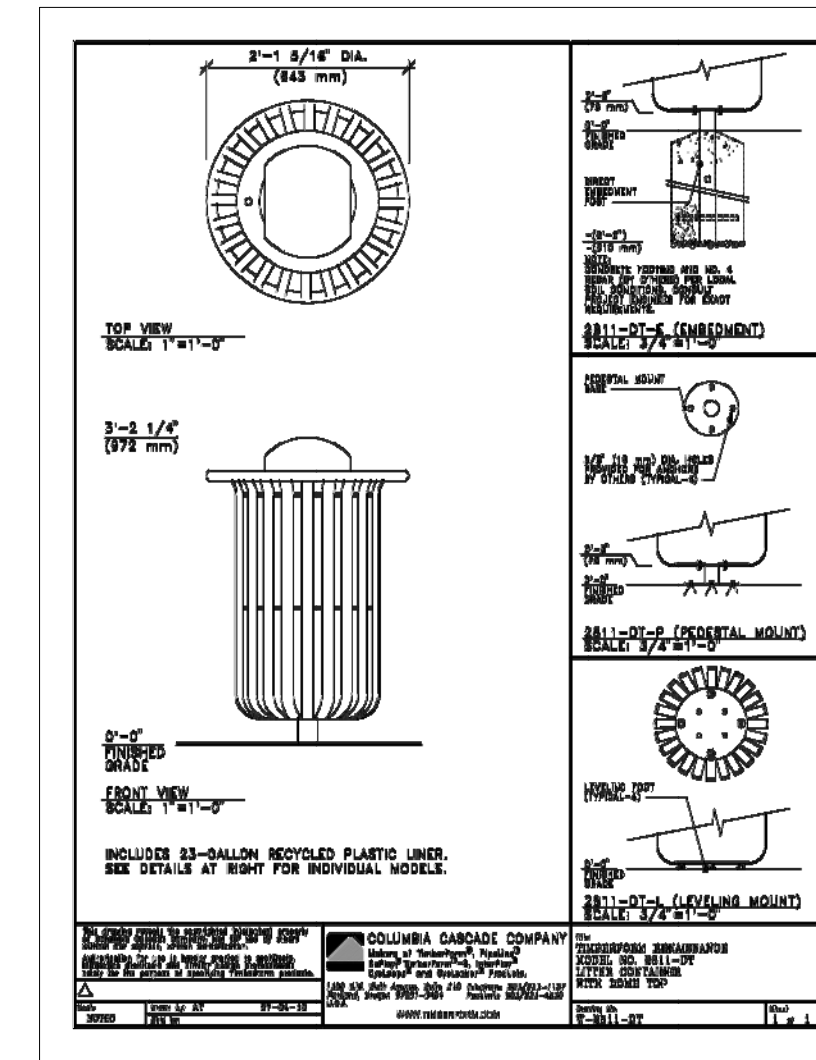
PRODUCT CUT-SHEET OR EQUAL



**PICNIC TABLE DETAIL**

NOT TO SCALE

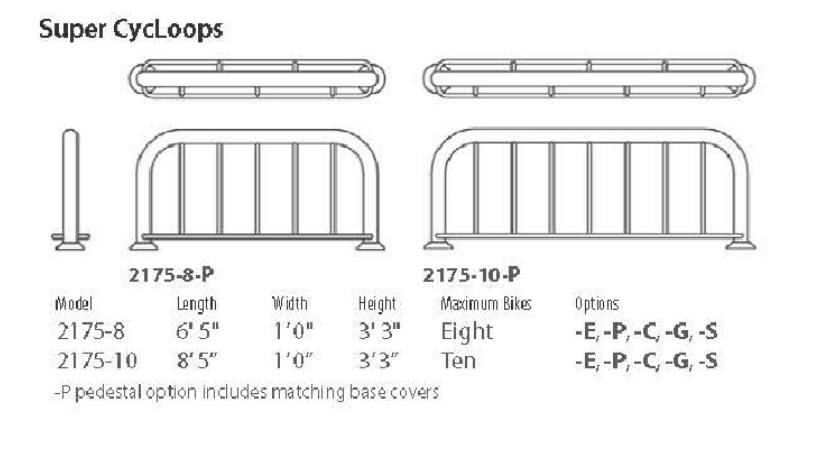
PRODUCT CUT-SHEET OR EQUAL



**TRASH RECEPTACLE DETAIL**

NOT TO SCALE

PRODUCT CUT-SHEET OR EQUAL



COLOR TBD

**BIKE RACK DETAIL**

NOT TO SCALE

PRODUCT CUT-SHEET OR EQUAL



**WODF-3-HC-CHD Three Station, Stainless Steel Outdoor Adult and Child ADA Compliant Drinking Fountain**

The Willoughby WODF-3-HC-CHD Three Station Stainless Steel Outdoor Drinking Fountain is a vandal-resistant, Adult and Child ADA compliant, multi-user feature for use in parks and recreational environments.  
WARNING: Cancer and Reproductive Harm - www.P669Warnings.gov

**Willoughby Stainless Fountains**

visit our website at [www.willoughbystainlessfountains.com](http://www.willoughbystainlessfountains.com)  
5105 Vasey 78th Street • Indianapolis, IN 46226  
(317) 875-0830 • Fax: (317) 875-0837 • (800) 428-4068

**DRINKING FOUNTAIN DETAIL**

NOT TO SCALE

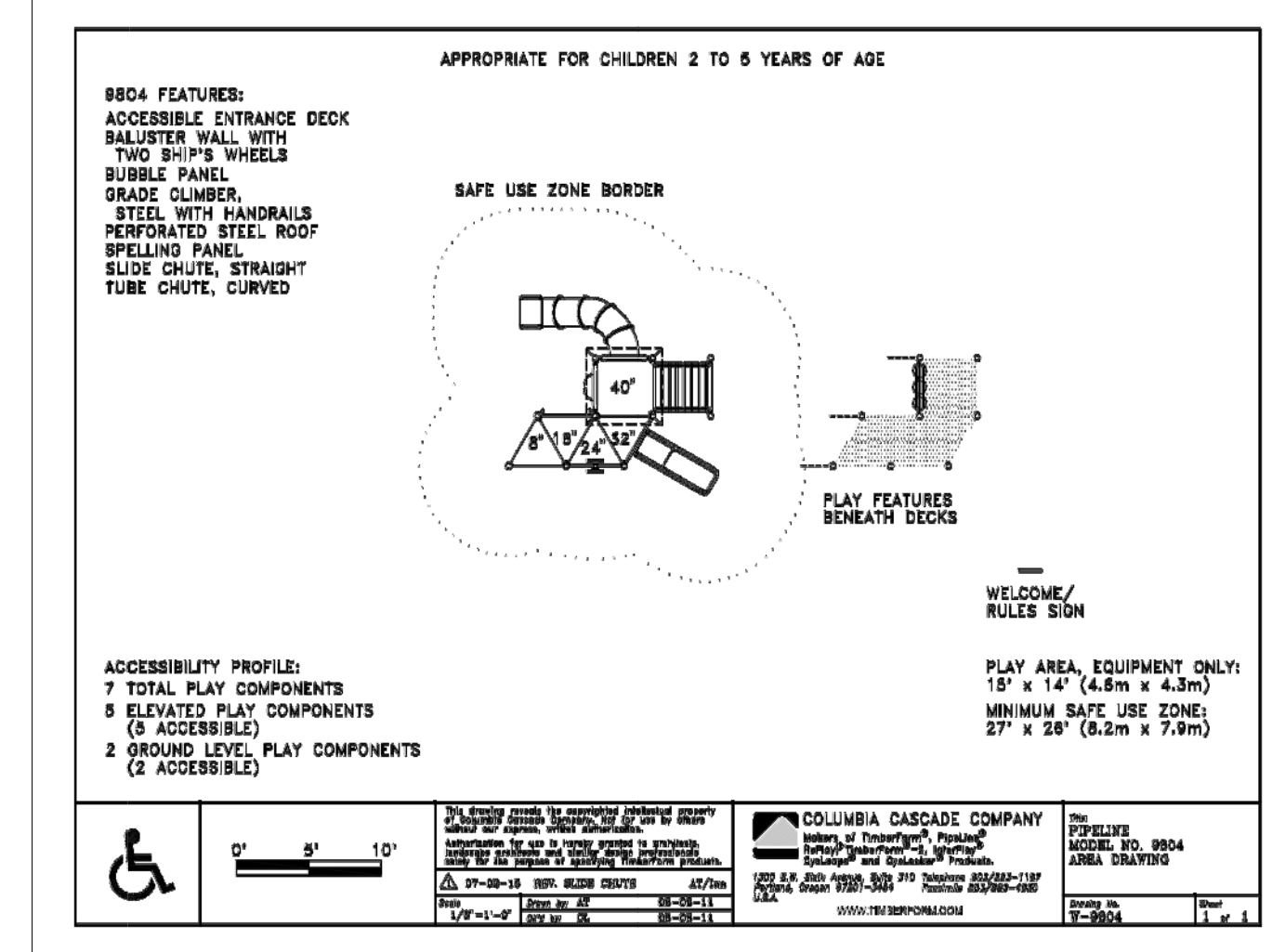
PRODUCT CUT-SHEET OR EQUAL



**LIGHTING DETAIL**

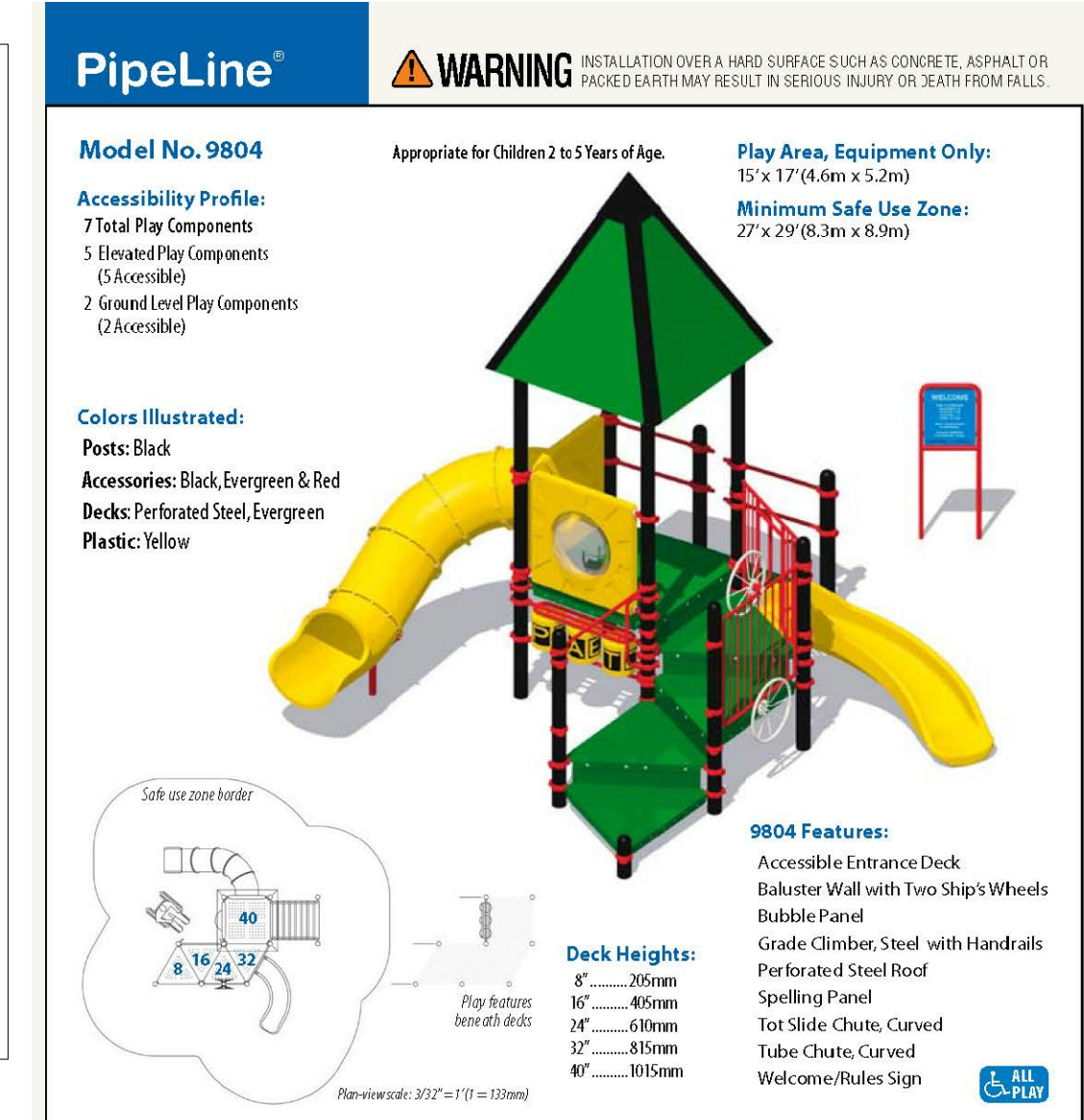
NOT TO SCALE

PRODUCT CUT-SHEET OR EQUAL

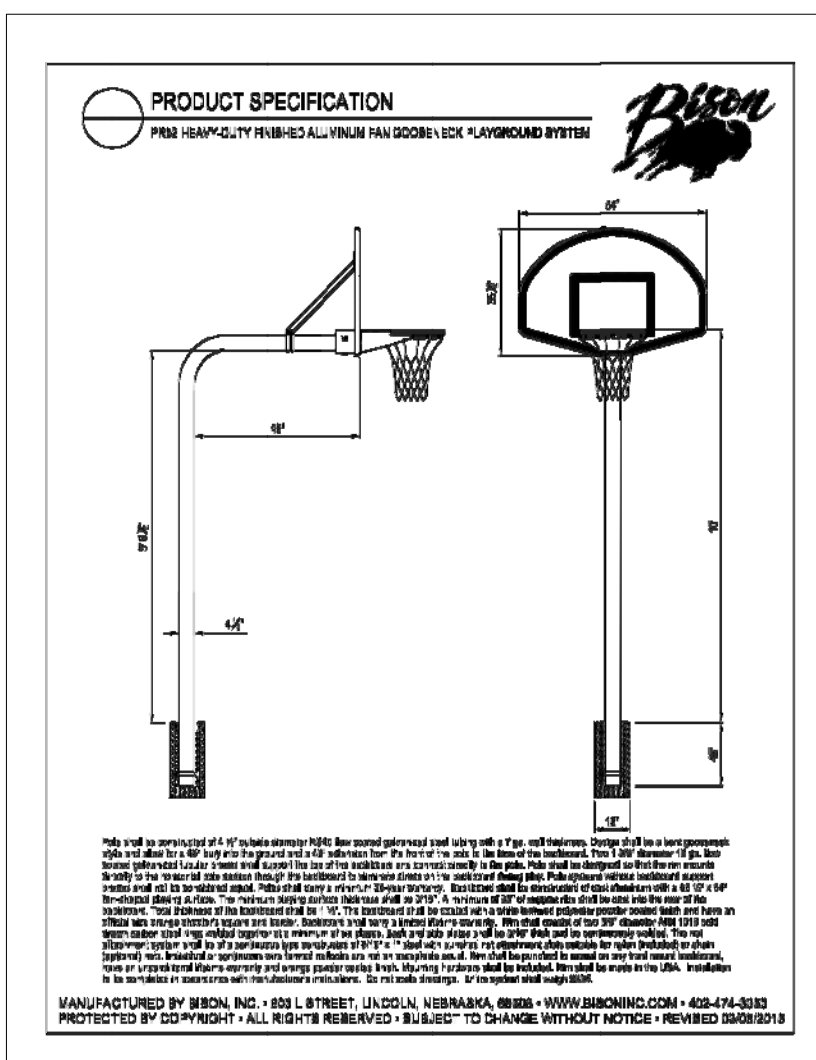


**PLAY STRUCTURE DETAIL (AGE 2-5)**

NOT TO SCALE



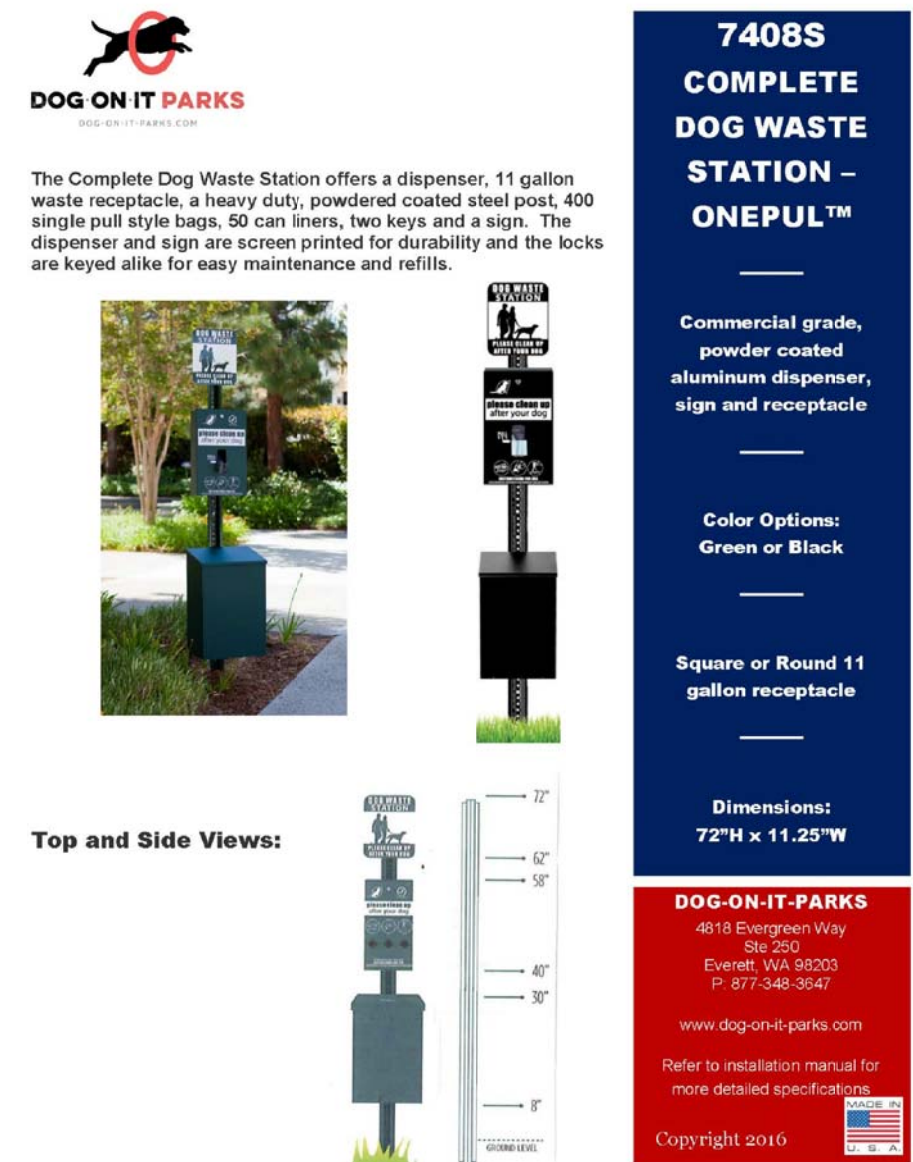
PRODUCT CUT-SHEET OR EQUAL



**BASKETBALL HOOP DETAIL**

NOT TO SCALE

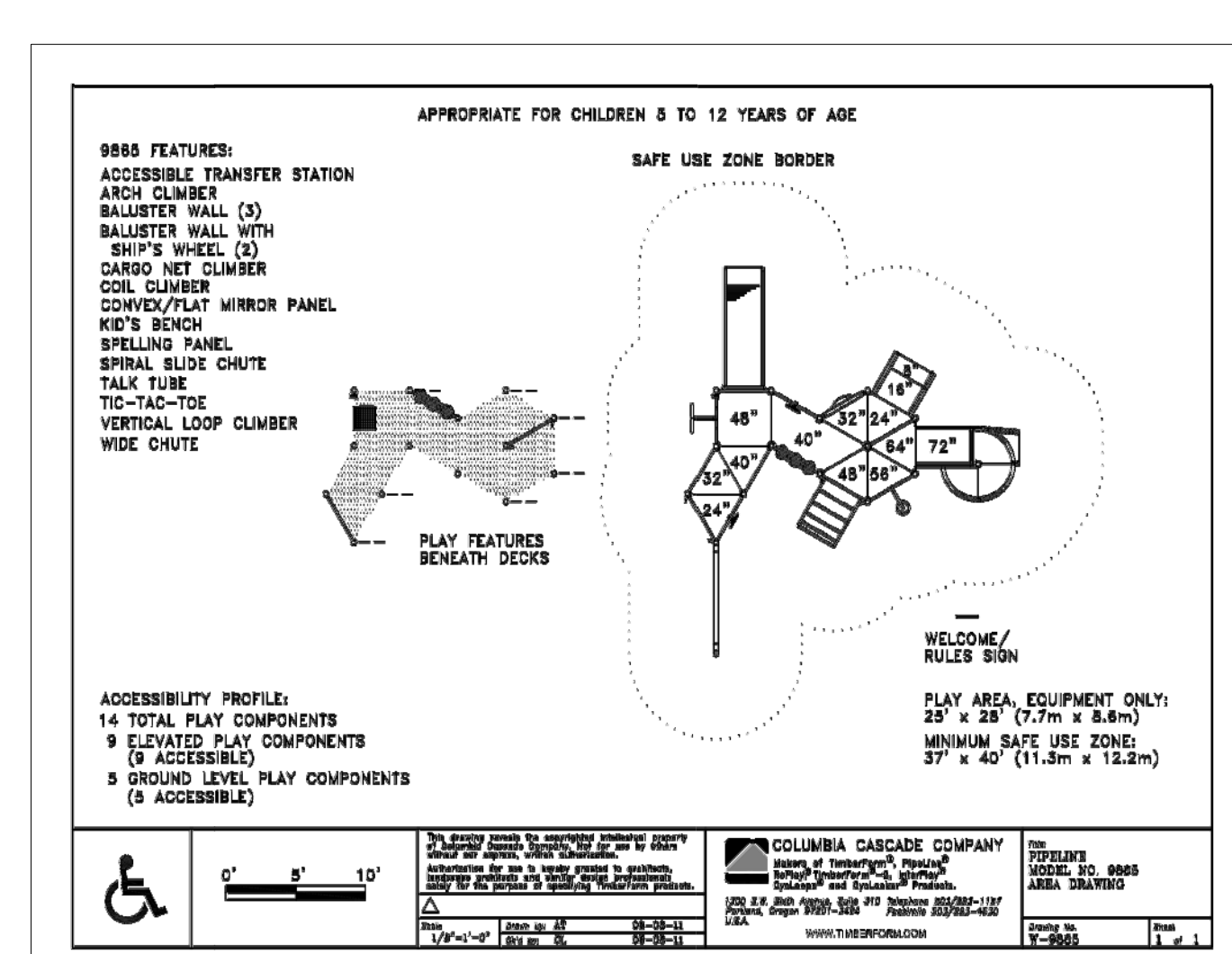
PRODUCT CUT-SHEET OR EQUAL



**DOG WASTE DISPENSER STATION DETAIL**

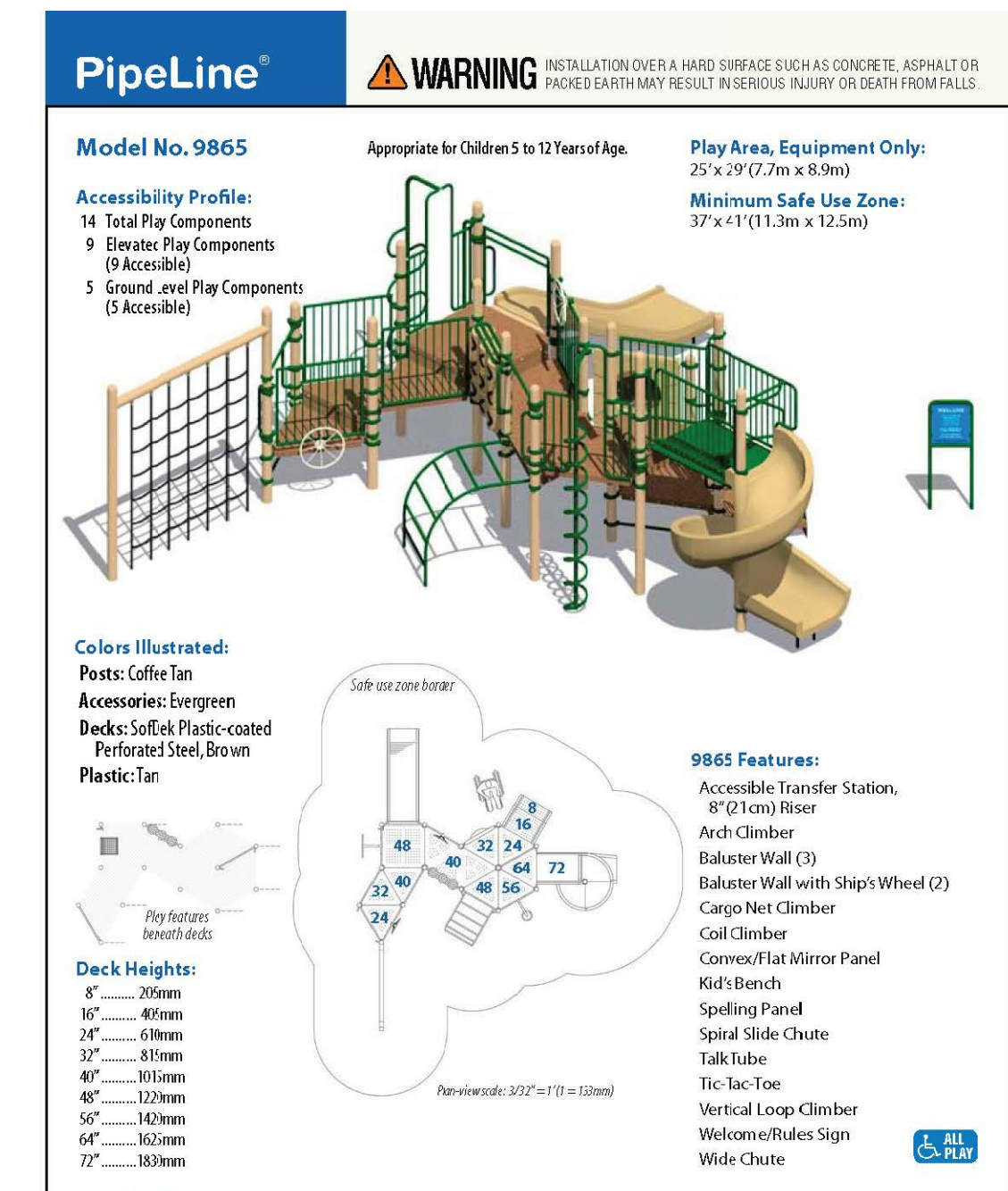
NOT TO SCALE

PRODUCT CUT-SHEET OR EQUAL



**PLAY STRUCTURE DETAIL (AGE 5-12)**

NOT TO SCALE



PRODUCT CUT-SHEET OR EQUAL

**RIVERSIDE ESTATES SUBDIVISION**  
PHASE 4 NEIGHBORHOOD PARK  
La Center, Washington

DRAWN:	CB	CHECKED:	CB
SCALE:	AS SHOWN	DATE:	06-03-20
JOB #:	20-1554		
ISSUED FOR:	DA		
REVISIONS:	<ul style="list-style-type: none"> <li>△</li> <li>△</li> <li>△</li> <li>△</li> <li>△</li> <li>△</li> <li>△</li> <li>△</li> </ul>		

**SHEET NAME:**  
PARK PLAN  
Materials  
Exhibit A-2

SHEET #:

© COPYRIGHT 2020, PLANNING SOLUTIONS, INC. NO PART OF THIS DRAWING MAY BE COPIED OR REPRODUCED WITHOUT WRITTEN PERMISSION OF PLANNING SOLUTIONS, INC.

DISCLAIMER AND LIMITATIONS: ANY WORK CONTAINED HEREIN INCLUDING BUT NOT LIMITED TO PLANS AND DOCUMENTS ARE INSTRUMENTS OF SERVICE INTENDED FOR USE SOLELY WITH RESPECT TO THIS PROJECT. ALL WORK SHALL BE CONSIDERED CONCEPTUAL AND SUBJECT TO CHANGE. THESE INSTRUMENTS OF SERVICE SHALL BE CONSIDERED A WORK IN PROGRESS WHERE UNKNOWN FACTORS EXIST AND JURISDICTIONAL REQUIREMENTS HAVE NOT BEEN VERIFIED. DUE TO THE HIGH DEGREE OF UNCERTAINTY ASSOCIATED WITH A CONCEPTUAL DESIGN, THESE INSTRUMENTS OF SERVICE SHALL NOT BE USED AS THE BASIS FOR A FINANCIAL EVALUATION OR CONSTRUCTION COST ESTIMATING. NO ASSURANCES ARE OFFERED OR IMPLIED AS TO THE OVERALL FEASIBILITY OF THE PROJECT. ALL WORK SHALL BE SUBJECT TO REVIEW AND FINAL APPROVAL BY ALL APPROPRIATE FEDERAL, STATE AND LOCAL AGENCIES AND SHALL CONTAIN THE PROFESSIONAL SEAL AND SIGNATURE OF ALL REQUIRED DESIGN PROFESSIONALS PRIOR TO ANY USE OF THESE DOCUMENTS. PLANNING SOLUTIONS, INC. AND ITS CONSULTANTS SHALL BE DEEMED THE AUTHORS AND OWNERS OF THEIR RESPECTIVE INSTRUMENTS OF SERVICE AND SHALL RETAIN ALL COMMON LAW, STATUTORY AND OTHER RESERVED RIGHTS, INCLUDING COPYRIGHTS.





**RIVERSIDE ESTATES SUBDIVISION**  
 PHASE 4 NEIGHBORHOOD PARK  
 La Center, Washington

DRAWN: CB	CHECKED: CB
SCALE: AS SHOWN	DATE: 06-03-20
JOB #: 20-1554	
ISSUED FOR: DA	
REVISIONS:	
△	
△	
△	
△	
△	

SHEET NAME:  
**PARK PLAN LANDSCAPE Exhibit A-3**

SHEET #:  
**P3**  
 OF 5

PLANT LEGEND			
<b>TREES</b>			
SYMBOL	BOTANICAL / COMMON NAME	SIZE	QUANTITY
	ACER RUBRUM 'ARMSTRONGS' / ARMSTRONGS MAPLE	2" Cal. Min.	6
	ACER RUBRUM 'RED SUNSET' / RED SUNSET MAPLE	2" cal. Min.	12
	THUJA PLICATA 'HOGAN' / HOGAN'S WESTERN RED CEDAR	6' ht. Min.	15
	PIGEA OMORICA / OMORICA SPRUCE	6' ht. Min.	4
	POPULUS TREMULA 'ERECTA' / SWEDISH ASPEN	2" Cal. Min.	6
	PRUNUS SERRULATA 'KAMANZAN' / KAMANZAN CHERRY	2" Cal. Min.	3
	PYRUS CALLERYANA 'CHANTICLEER' / CHANTICLEER FLOWERING PEAR	2" Cal. Min.	1
	TILIA CORDATA / GREENSPIRE LINDEN	2" Cal. Min.	3
	PINUS FLEXILIS 'VANDERWOLF'S PYRAMID' / VANDERWOLF PINE	6' ht. Min.	10
	ZELKOVA SERRATA / VILLAGE GREEN SELKOVA	2" Cal. Min.	6
<b>SHRUBS</b>			
SYMBOL	BOTANICAL / COMMON NAME		
	FESTUCA GLAUCA / BLUE FESCUE		
	ILEX X MESERVEAE 'BLUE BOY' / BLUE BOY HOLLY		
	KALMIA LATIFOLIA 'ELF' / ELF MOUNTAIN LAUREL		
	MAHONIA AQUIFOLIUM 'COMPACTA' / COMPACT OREGON GRAPE		
	MISCANTHUS SINENSIS 'MORNING LIGHT' / MORNING LIGHT MAIDEN GRASS		
	MYRICA CALIFORNICA / PACIFIC MAX MYRTLE		
	NANDINA DOMESTICA 'FIREPOWER' / FIREPOWER NANDINA		
	NANDINA DOMESTICA 'MOONBAY' / MOONBAY NANDINA		
	PIERIS JAPONICA 'GAVATINE' / GAVATINE PIERIS		
	PIERIS JAPONICA 'VARIEGATA' / VARIEGATED PIERIS		
	PRUNUS LAUROCERASUS 'SCHIPKAENSIS' / SCHIPKA CHERRY LAUREL		
	VIBURNUM DAVIDII / DAVID VIBURNUM		
	TURF - SOD OR SEED		



© COPYRIGHT 2020 PLANNING SOLUTIONS, INC. NO PART OF THIS DRAWING MAY BE COPIED OR REPRODUCED WITHOUT WRITTEN PERMISSION OF PLANNING SOLUTIONS, INC.

DISCLAIMER AND LIMITATIONS: ANY WORK CONTAINED HEREIN INCLUDING BUT NOT LIMITED TO PLANS AND DOCUMENTS ARE INSTRUMENTS OF SERVICE INTENDED FOR USE SOLELY WITH RESPECT TO THIS PROJECT. ALL WORK SHALL BE CONSIDERED CONCEPTUAL AND SUBJECT TO CHANGE. THESE INSTRUMENTS OF SERVICE SHALL BE CONSIDERED A WORK IN PROGRESS WHERE UNKNOWN FACTORS EXIST AND JURISDICTIONAL REQUIREMENTS HAVE NOT BEEN VERIFIED. DUE TO THE HIGH DEGREE OF UNCERTAINTY ASSOCIATED WITH A CONCEPTUAL DESIGN, THESE INSTRUMENTS OF SERVICE SHALL NOT BE USED AS THE BASIS FOR A FINANCIAL EVALUATION OR CONSTRUCTION COST ESTIMATING. NO ASSURANCES ARE OFFERED OR IMPLIED AS TO THE OVERALL FEASIBILITY OF THE PROJECT. ALL WORK SHALL BE SUBJECT TO REVIEW AND FINAL APPROVAL BY ALL APPROPRIATE FEDERAL, STATE AND LOCAL AGENCIES AND SHALL CONTAIN THE PROFESSIONAL SEAL AND SIGNATURE OF ALL REQUIRED DESIGN PROFESSIONALS PRIOR TO ANY USE OF THESE DOCUMENTS. PLANNING SOLUTIONS, INC. AND ITS CONSULTANTS SHALL BE DEEMED THE AUTHORS AND OWNERS OF THEIR RESPECTIVE INSTRUMENTS OF SERVICE AND SHALL RETAIN ALL COMMON LAW, STATUTORY AND OTHER RESERVED RIGHTS INCLUDING COPYRIGHTS.

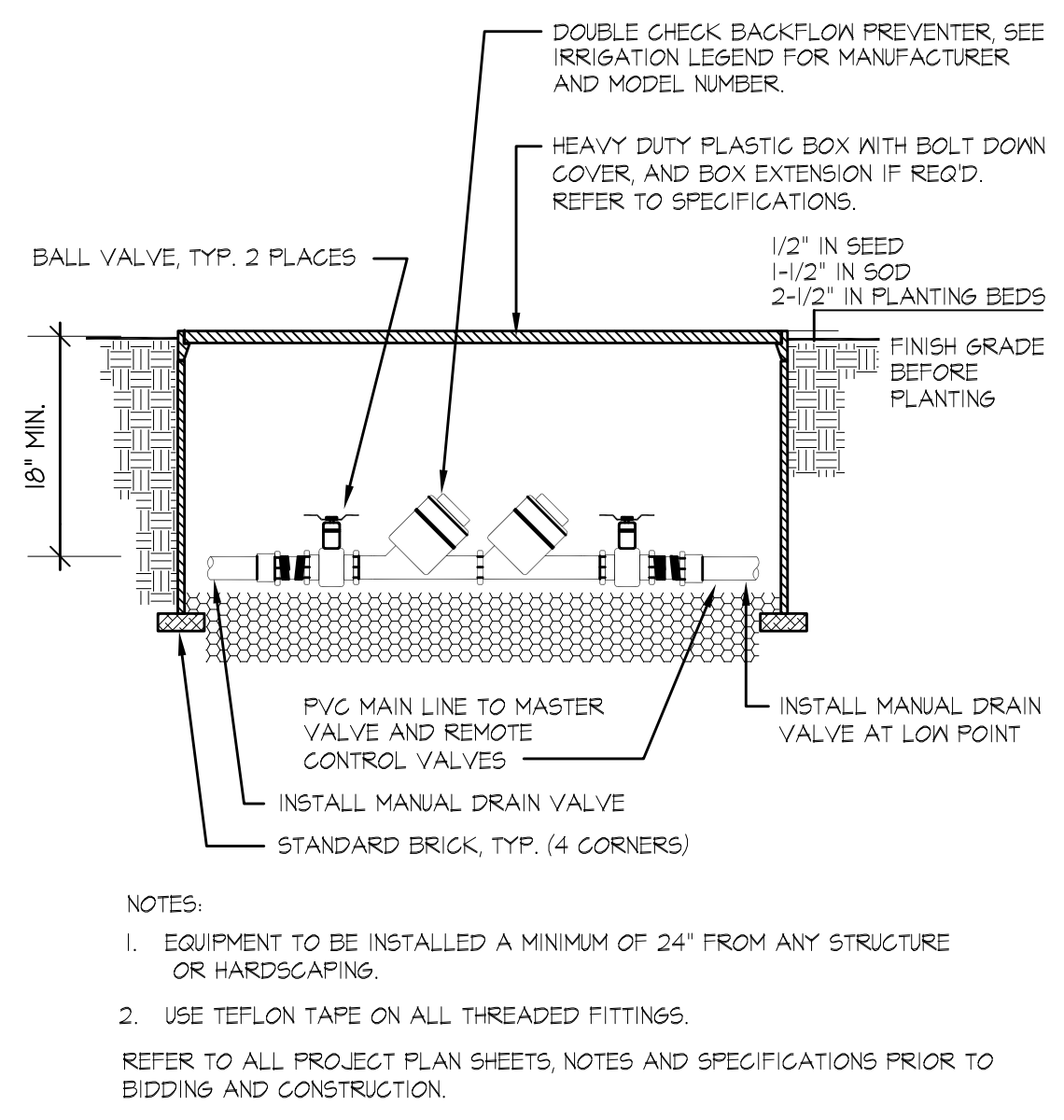




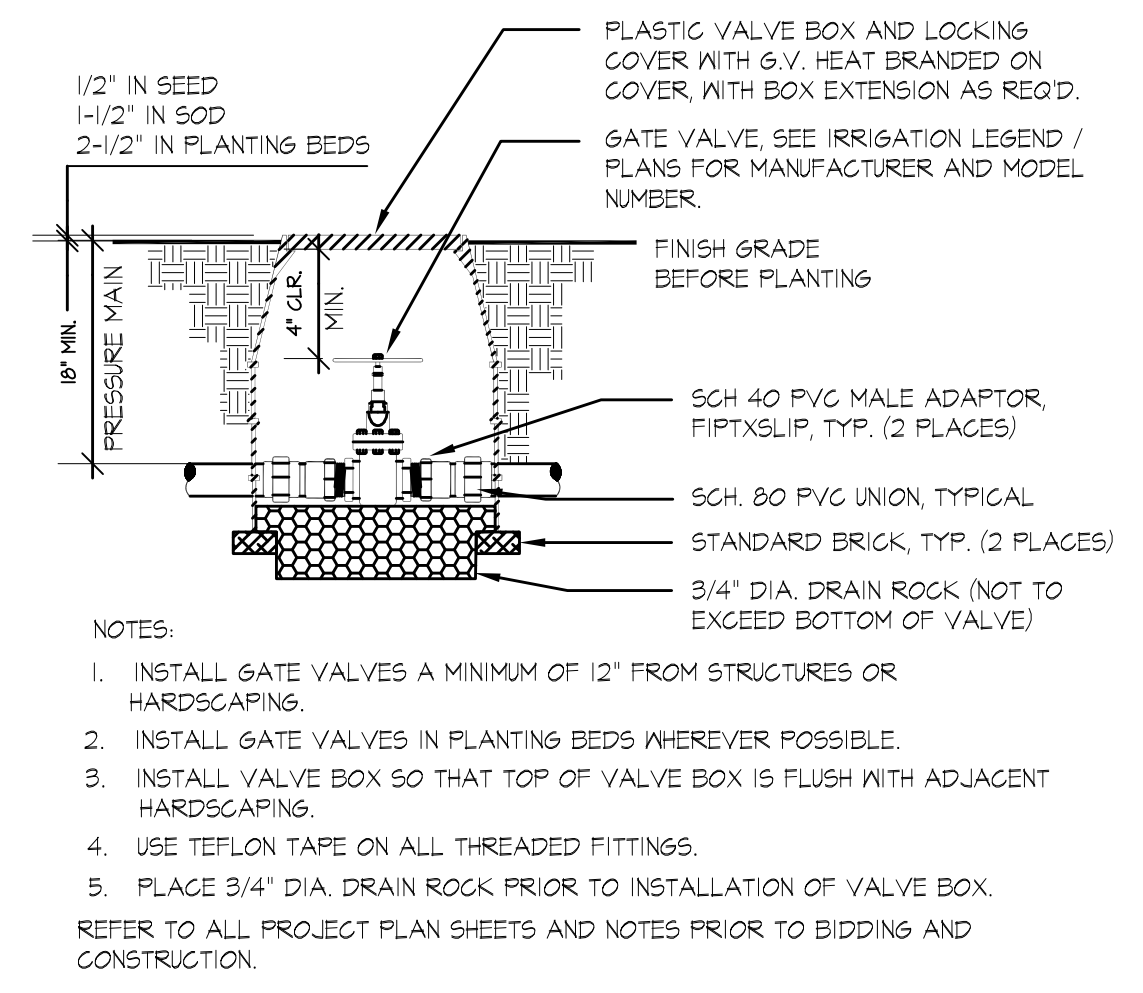


**PRELIMINARY**  
 NOT FOR CONSTRUCTION  
 SUBJECT TO APPROVAL  
 PREPARED BY: MICHAEL A. BARNHART  
 LICENSE NO. 6800  
 EXPIRES ON 02/20/2021

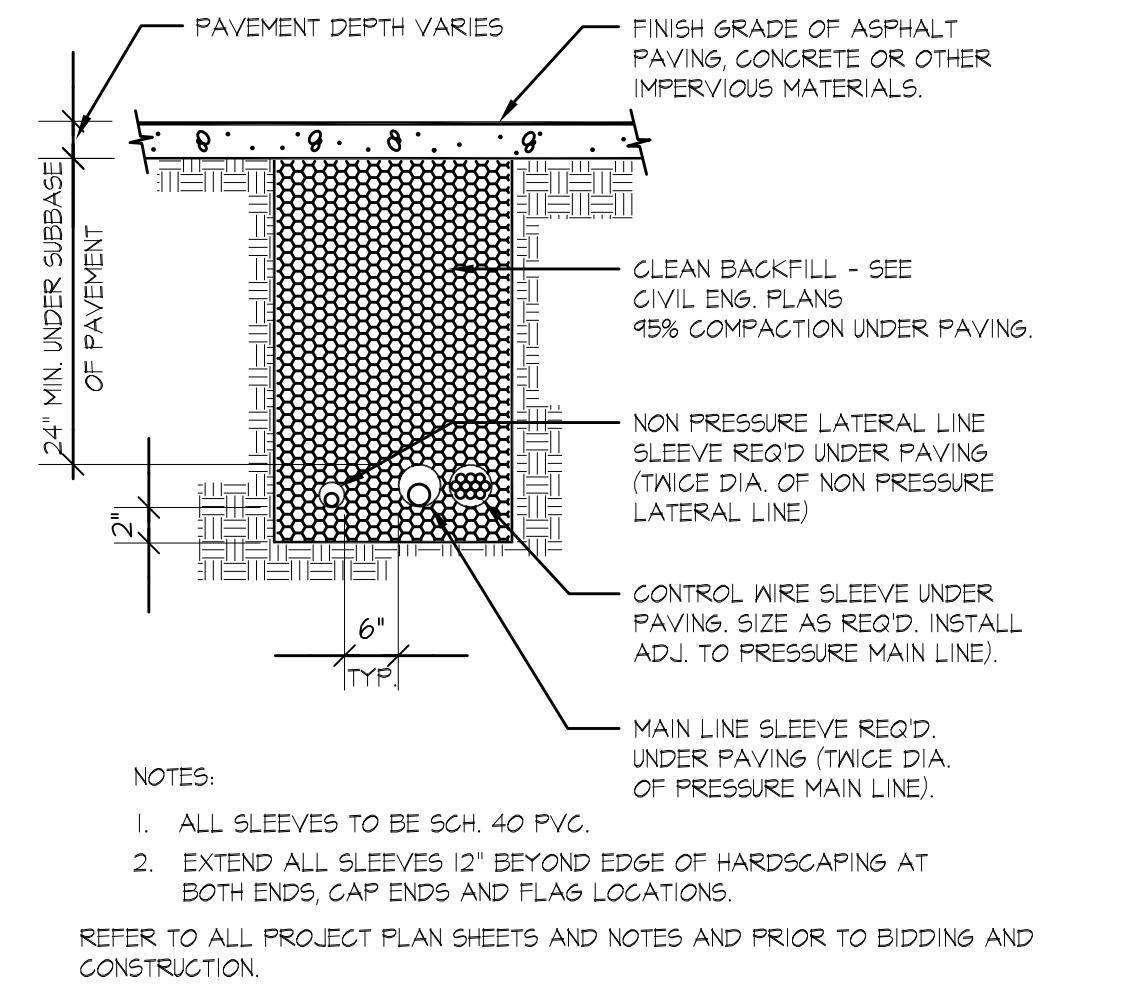
**RIVERSIDE ESTATES SUBDIVISION**  
 PHASE 4 NEIGHBORHOOD PARK  
 La Center, Washington



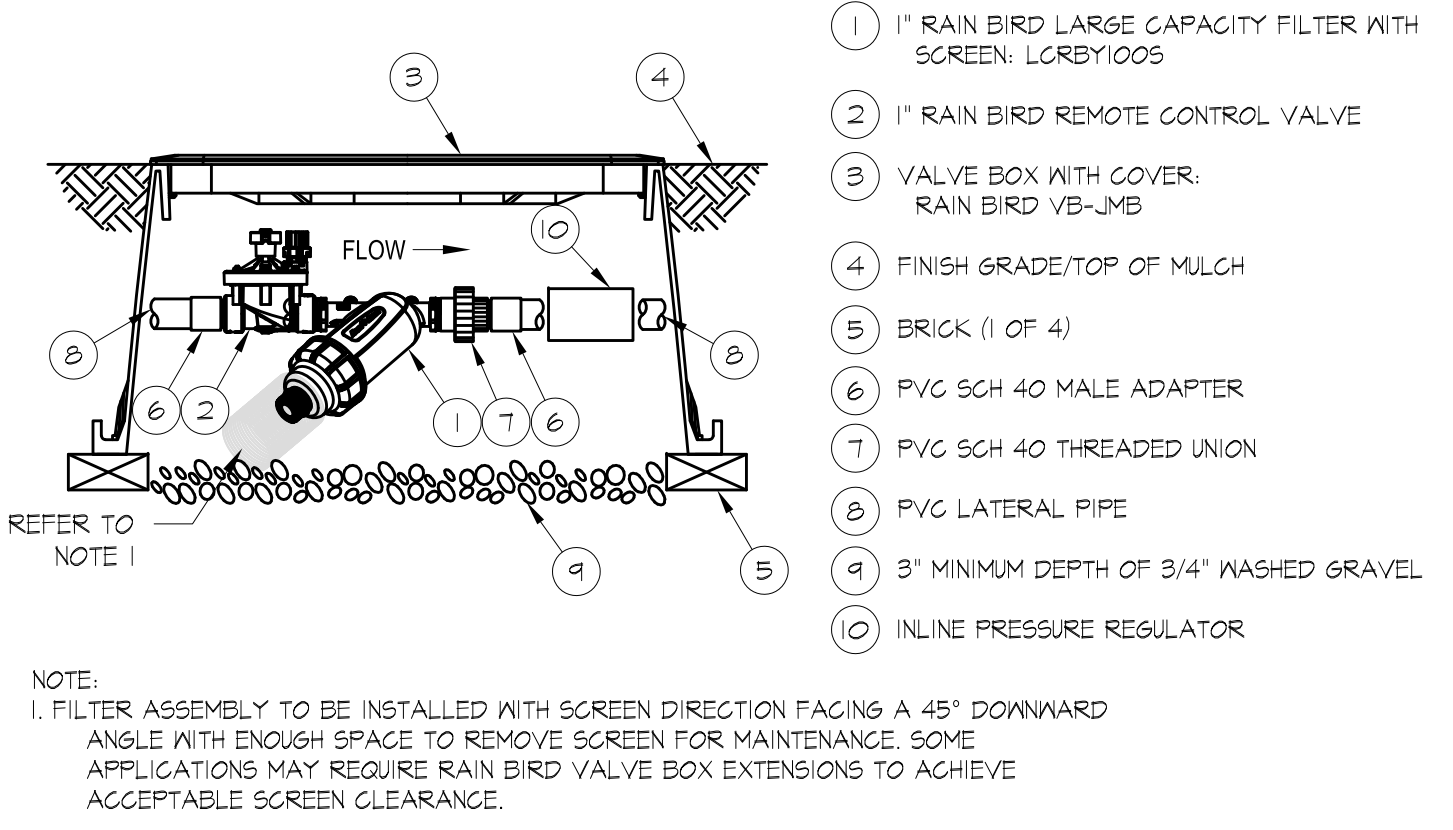
**A Backflow Preventer Detail (2" & Smaller)**  
 Not To Scale SECTION



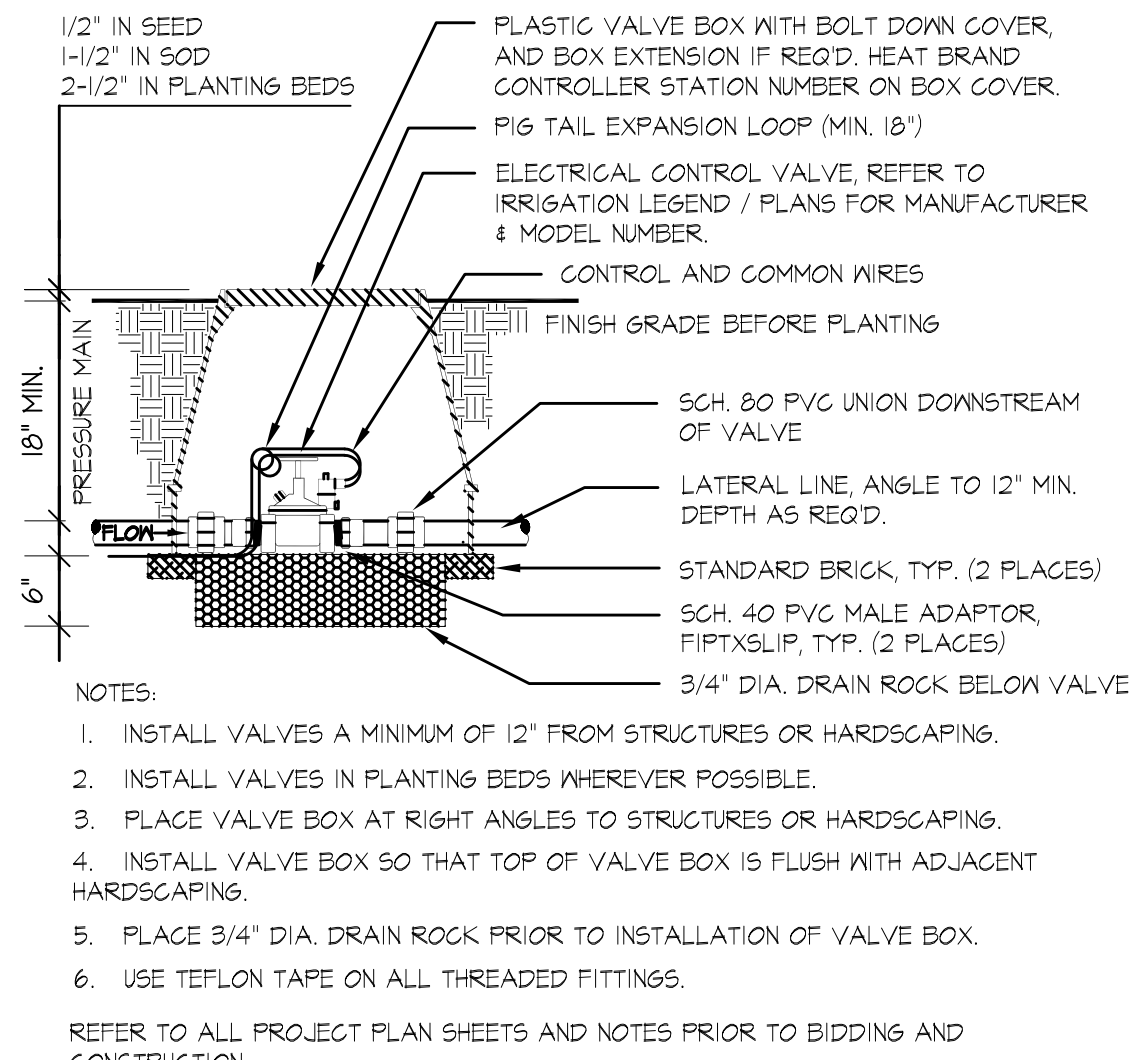
**D Gate Valve Detail: Threaded Ends (3" & Smaller)**  
 Not To Scale SECTION



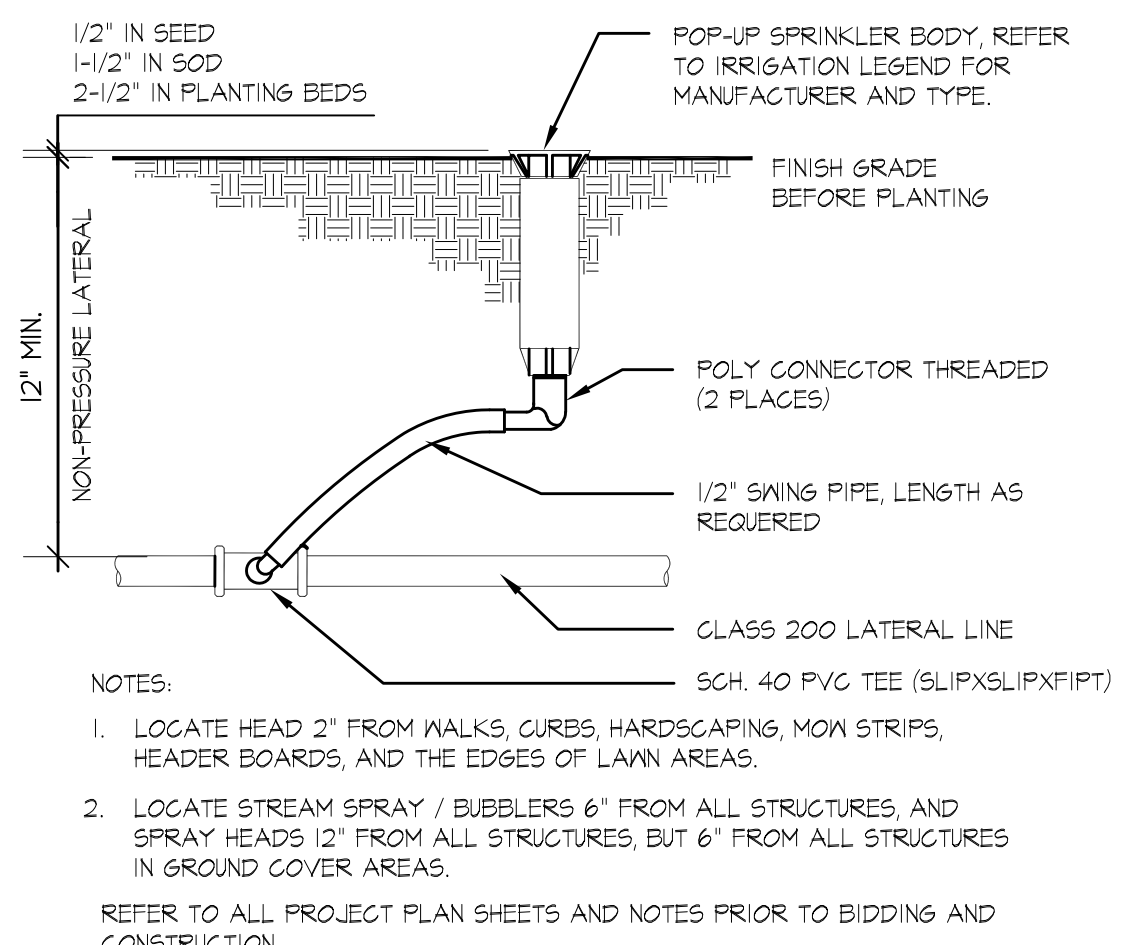
**G Pipe Trenching Under Pavement Detail**  
 Not To Scale SECTION



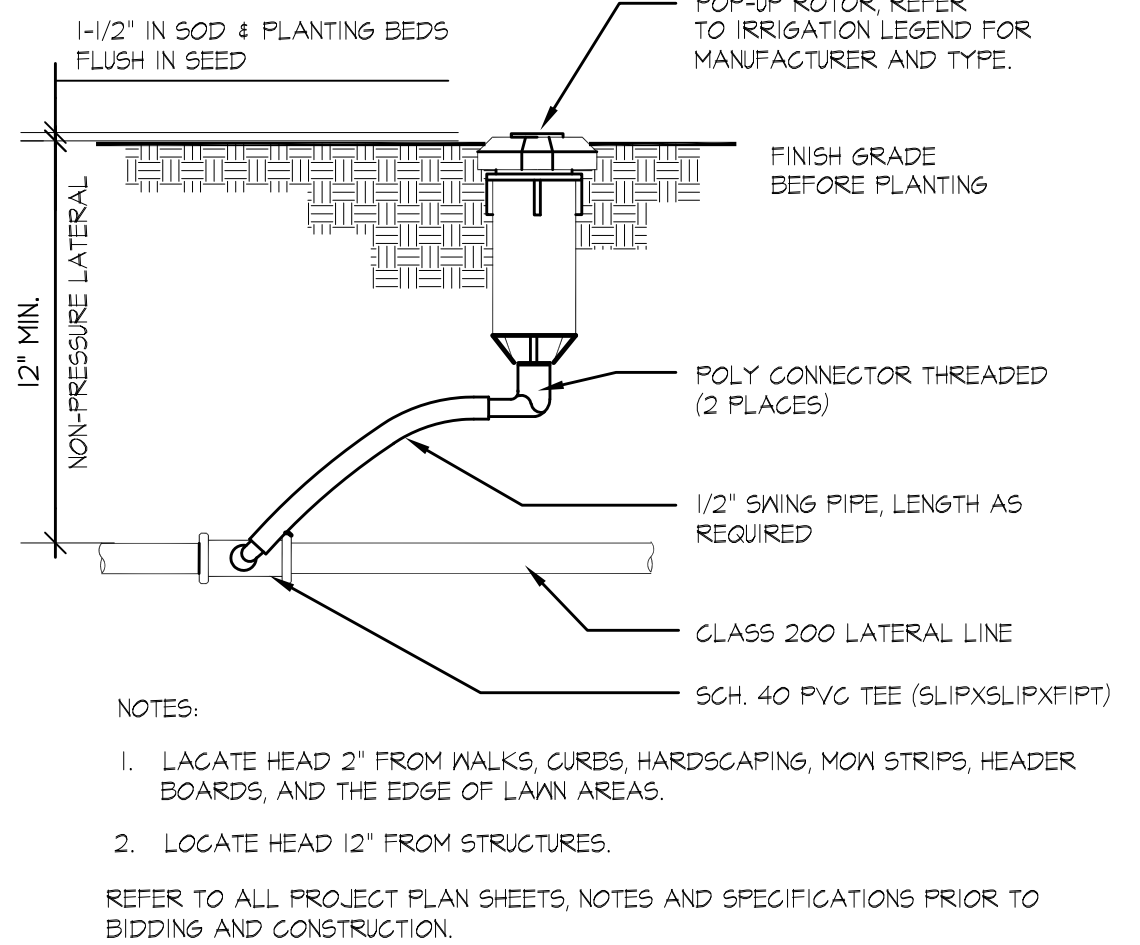
**J 1" Large Capacity Filter with Valve - Drip**  
 Not To Scale SECTION



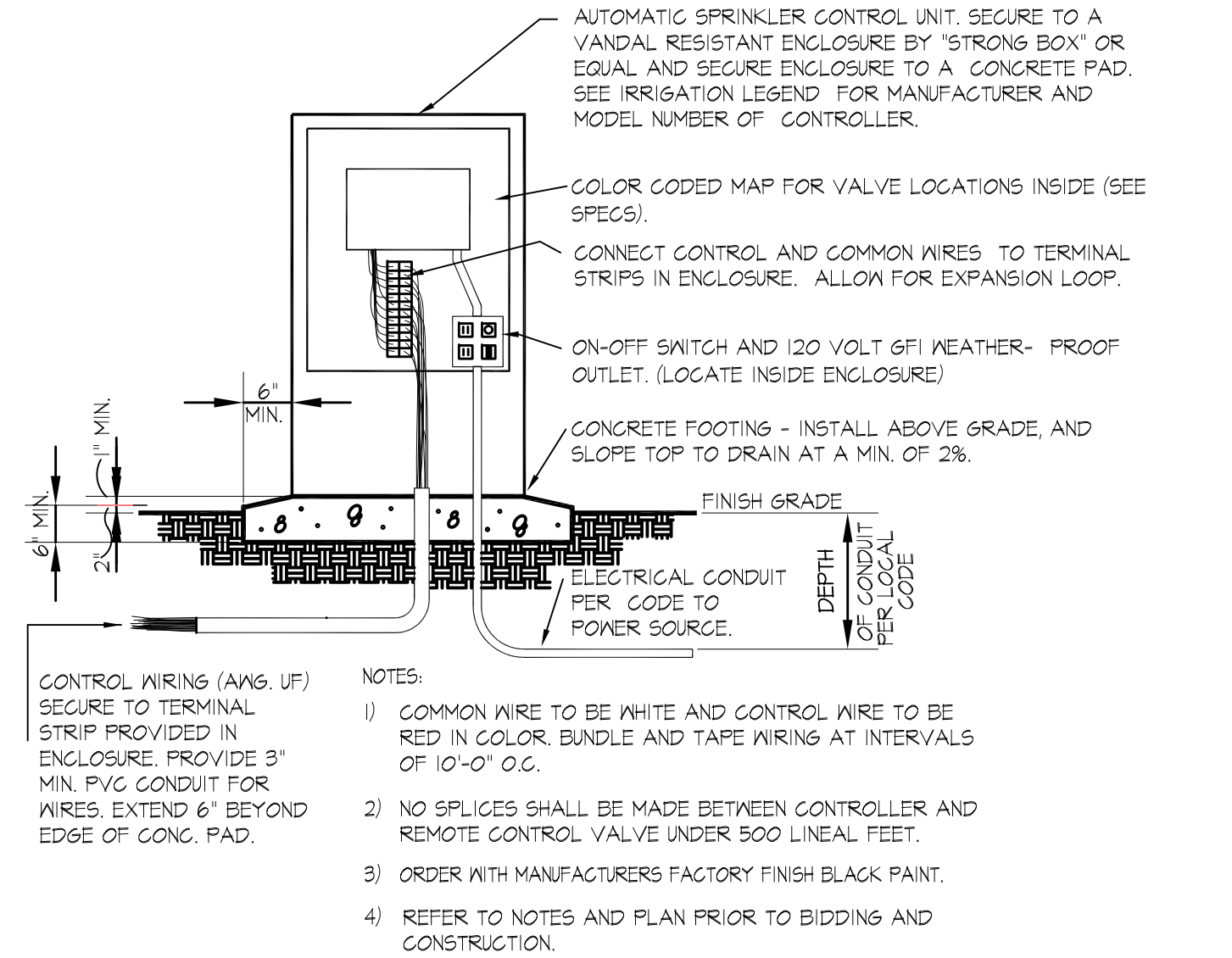
**B Electric Control Valve Detail: 3" & Smaller**  
 Not To Scale SECTION



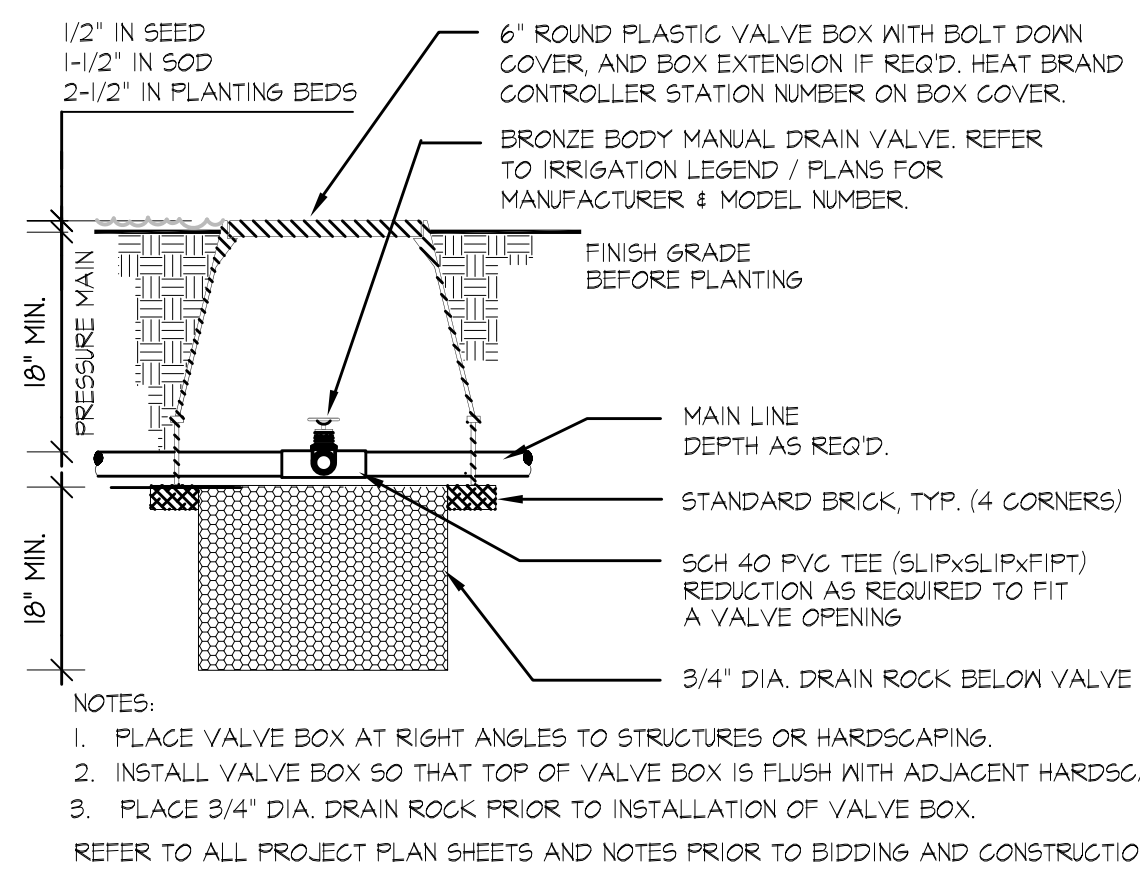
**E Pop-Up Spray Detail**  
 Not To Scale SECTION



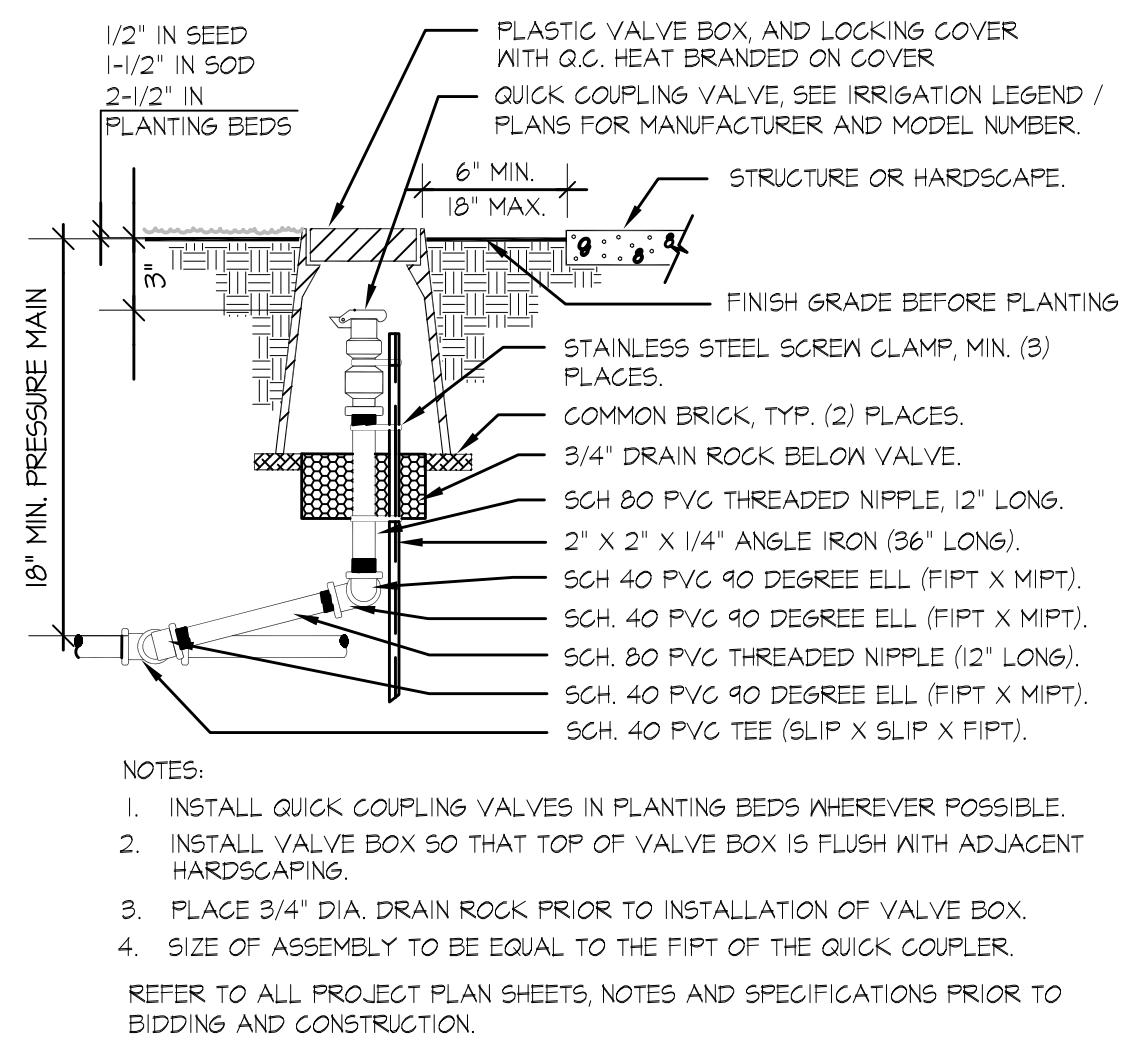
**H Pop-Up Rotor Detail**  
 Not To Scale SECTION



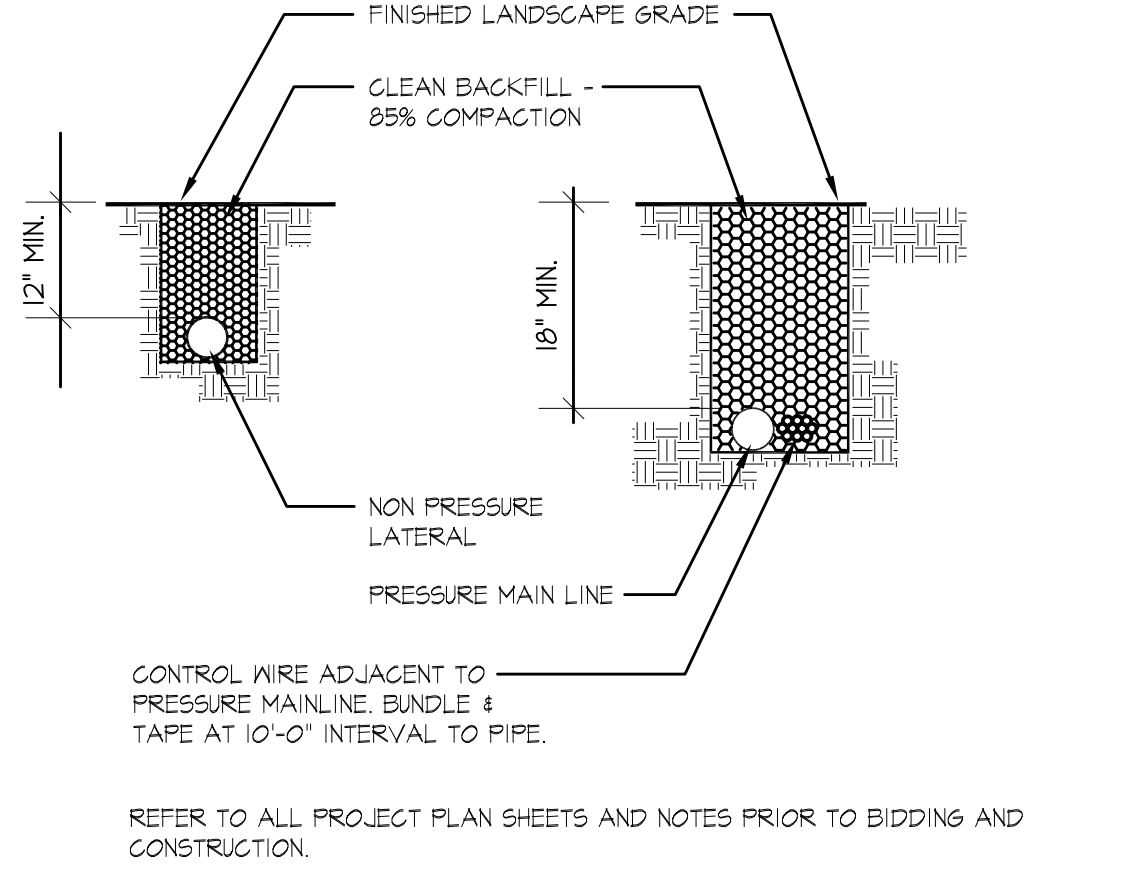
**J Automatic Controller Detail (Pedestal Mount)**  
 Not To Scale SECTION



**C Manual Drain Valve**  
 Not To Scale SECTION



**F Quick Coupling Valve Detail (Within Valve Box)**  
 Not To Scale SECTION



**I Pipe Trenching Detail (w/in Landscape Areas)**  
 Not To Scale SECTION

DRAWN: BOP		CHECKED: CB	
SCALE: AS NOTED	DATE: 06-03-20	JOB #:	20-1554
ISSUED FOR: DA			
REVISIONS:			
1. 2. 3. 4. 5. 6. 7.			
SHEET NAME:			
<b>PARK PLAN IRRIGATION DETAILS EXHIBIT A-5</b>			
SHEET #:			

P5

SHEET 5 OF 5

© COPYRIGHT 2020, PLANNING SOLUTIONS, INC. NO PART OF THIS DRAWING MAY BE COPIED OR REPRODUCED WITHOUT WRITTEN PERMISSION OF PLANNING SOLUTIONS, INC.

DISCLAIMER AND LIMITATIONS: ANY WORK CONTAINED HEREIN INCLUDING BUT NOT LIMITED TO PLANS AND DOCUMENTS ARE INSTRUMENTS OF SERVICE INTENDED FOR USE SOLELY WITH RESPECT TO THIS PROJECT. ALL WORK SHALL BE CONSIDERED CONCEPTUAL AND SUBJECT TO CHANGE. THESE INSTRUMENTS OF SERVICE SHALL BE CONSIDERED A WORK IN PROGRESS WHERE UNKNOWN FACTORS EXIST AND JURISDICTIONAL REQUIREMENTS HAVE NOT BEEN VERIFIED. DUE TO THE HIGH DEGREE OF UNCERTAINTY ASSOCIATED WITH A CONCEPTUAL DESIGN, THESE INSTRUMENTS OF SERVICE SHALL NOT BE USED AS THE BASIS FOR A FINANCIAL EVALUATION OR CONSTRUCTION COST ESTIMATING. NO ASSURANCES ARE OFFERED OR IMPLIED AS TO THE OVERALL FEASIBILITY OF THE PROJECT. ALL WORK SHALL BE SUBJECT TO REVIEW AND FINAL APPROVAL BY ALL APPROPRIATE FEDERAL, STATE AND LOCAL AGENCIES AND SHALL CONTAIN THE PROFESSIONAL SEAL AND SIGNATURE OF ALL REQUIRED DESIGN PROFESSIONALS PRIOR TO ANY USE OF THESE DOCUMENTS. PLANNING SOLUTIONS, INC. AND ITS CONSULTANTS SHALL BE DEEMED THE AUTHORS AND OWNERS OF THEIR RESPECTIVE INSTRUMENTS OF SERVICE AND SHALL RETAIN ALL COMMON LAW, STATUTORY AND OTHER RESERVED RIGHTS, INCLUDING COPYRIGHTS.