

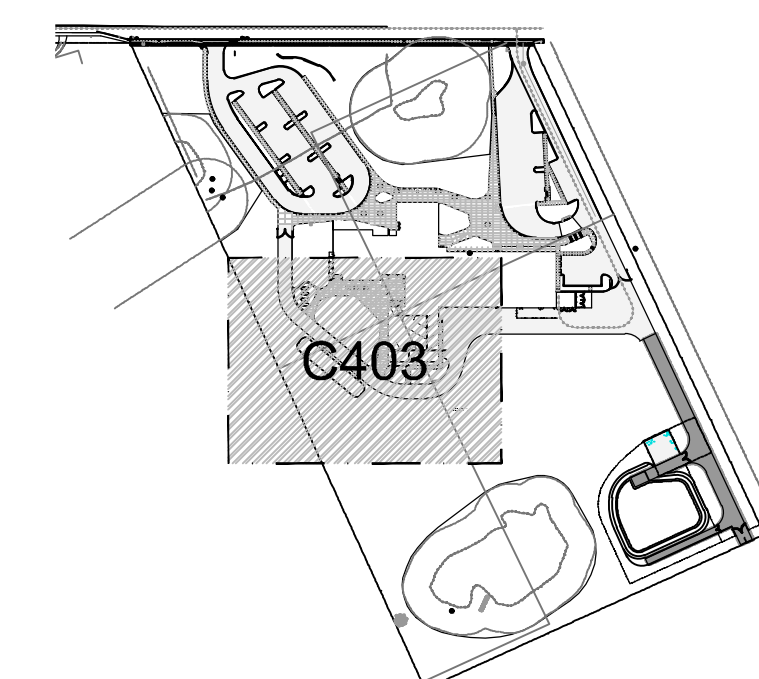
GENERAL NOTES

- 1. SEE SHEET C001 FOR ABBREVIATIONS AND MASTER LEGEND. SEE SHEET C002-C003 FOR GENERAL NOTES.
2. PIPE SIZE AS NOTED ON PLANS. PIPE MATERIAL TO BE PVC UNLESS OTHERWISE NOTED.
3. SEE DETAIL SHEET C905 FOR PVC CATCH BASIN ANTI-FLOTATION REQUIREMENTS.

STORM SEWER NOTES:

- 1. INSTALL 18" PVC CATCH BASIN WITH 18" DROP-IN GRATE, SEE DETAIL SHEET C905 AND C906.
2. INSTALL 18" PVC CATCH BASIN WITH 18" DOME GRATE, SEE SHEET C905 AND C906 FOR STRUCTURE AND DOME DETAILS.
3. INSTALL 18" PVC CATCH BASIN WITH 18" NON-SLIP SOLID COVER, SEE DETAIL SHEET C905 AND C906.
4. INSTALL 24" PVC CATCH BASIN WITH 24" NON-SLIP SOLID COVER, SEE DETAIL SHEET C905 AND C906.
5. INSTALL STORM SEWER CLEANOUT, SEE DETAIL SHEET C907.
6. INSTALL 24" PVC CATCH BASIN WITH 24" DROP-IN GRATE, SEE DETAIL SHEET C905 AND C906.
7. INSTALL SLOPED FIELD INLET, SEE DETAIL SM-9, SHEET C919.
8. INSTALL FLOW CONTROL STRUCTURE, SEE DETAIL SHEET C911.
9. INSTALL BIORETENTION FACILITY, SEE DETAIL SHEET C908. SEE TABLE SHEET C908 FOR AREA AND ELEVATION DETAILS.
10. SEE POND PERIMETER PERFORATED TRENCH DETAIL, SEE SHEET C904.
11. CONSTRUCT TIERED BIORETENTION FACILITY, SEE DETAIL SHEET C909.
12. STORMWATER DETENTION POND, SEE DETAIL SHEET C910.
13. INSTALL CULVERT INLET VAULT. SEE DETAIL SHEET C907.
14. OUTFALL PROTECTION, SEE DETAIL SHEET C904.
15. SEE FRONTAGE IMPROVEMENTS SHEETS C701 - C703.
16. MAINTAIN 1' HORIZONTAL SEPARATION BETWEEN 18" DIAMETER PIPES. MAINTAIN 6" VERTICAL CLEARANCE AT CROSSING.
17. STORM CONNECTION TO BUILDING. SEE MECHANICAL PLANS.
18. STORM SUMP PUMP SYSTEM, SEE DETAIL SHEET C907.
19. LANDSCAPE AREA. GRADE TO DRAIN. SEE LANDSCAPE PLANS.
20. INSTALL TRASH RACK, SEE DETAIL SHEET C904.
21. ROCK LINED DITCH, SEE TYPICAL SECTION SHEET C901.
22. TRENCH DRAIN. SEE DETAIL SHEET C908.
23. TRENCH DRAIN CATCH BASIN. SEE DETAIL SHEET C908.
24. APPROXIMATE LOCATION OF 4" SD DOWNSPOUT CONNECTION (S=0.0200 FT/FT MIN). 4" x (STORM MAIN PIPE DIAMETER) WYE WHERE CONNECTION TIES TO MAIN. SEE ARCHITECTURAL PLANS.
25. APPROXIMATE LOCATION OF 4"/6" SD RAIN WATER LEADER CONNECTION (S=0.0200 FT/FT MIN). SEE MECHANICAL PLANS.
26. 18" PIPES TO PROVIDE MIN 6" VERTICAL CLEARANCE WITH CROSSING PIPE. MAINTAIN 1' HORIZONTAL SEPARATION BETWEEN PIPES.
27. WALL OR FOUNDATION PIPE PENETRATION. SEE STRUCTURAL DETAILS.
28. CONSTRUCT GRAVEL OVERFLOW SPILLWAY, SEE POND DETAIL SHEET C910 FOR DETAILS.
29. INSTALL 48" HP MANHOLE WITH 24" FRAME AND LID, SEE DETAIL SHEET C905. LID SHALL BE NON-SLIP.
30. OVERFLOW DISPERSAL TRENCH. SEE DETAIL SHEET C909.
31. SIDEWALK CROSS DRAIN OUTFALL PROTECTION. SEE DETAIL SHEET C904.
32. INSTALL 18" PVC CATCH BASIN WITH 2x2' GRATE, SEE DETAIL SHEET C905 AND C906.
33. THICKENED CONCRETE PER LOW COVER PIPE CROSSING DETAIL, SHEET SHEET C903.
34. PIPE ZONE CDF BACKFILL PER DETAIL SHEET C905.

KEYMAP



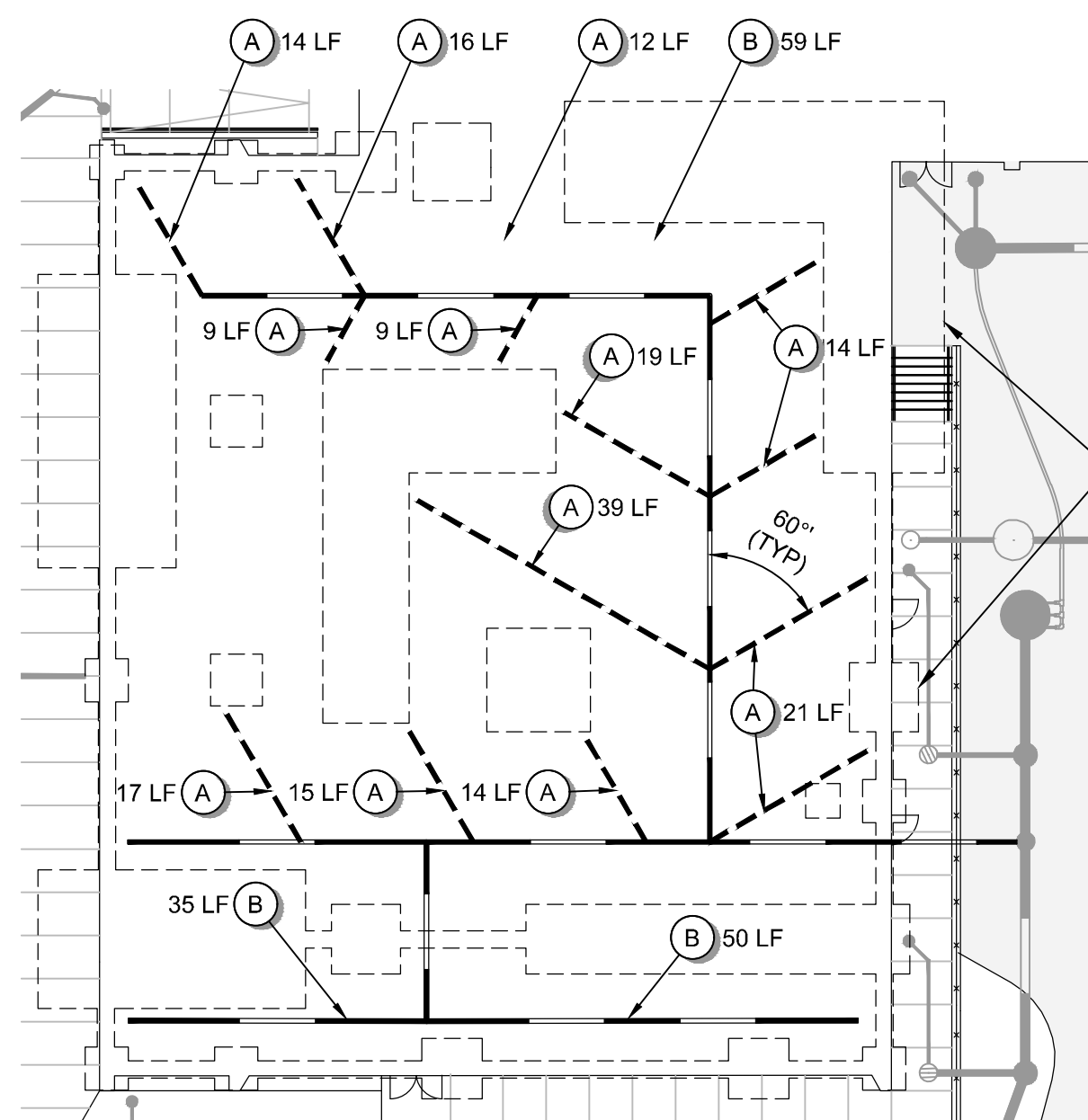
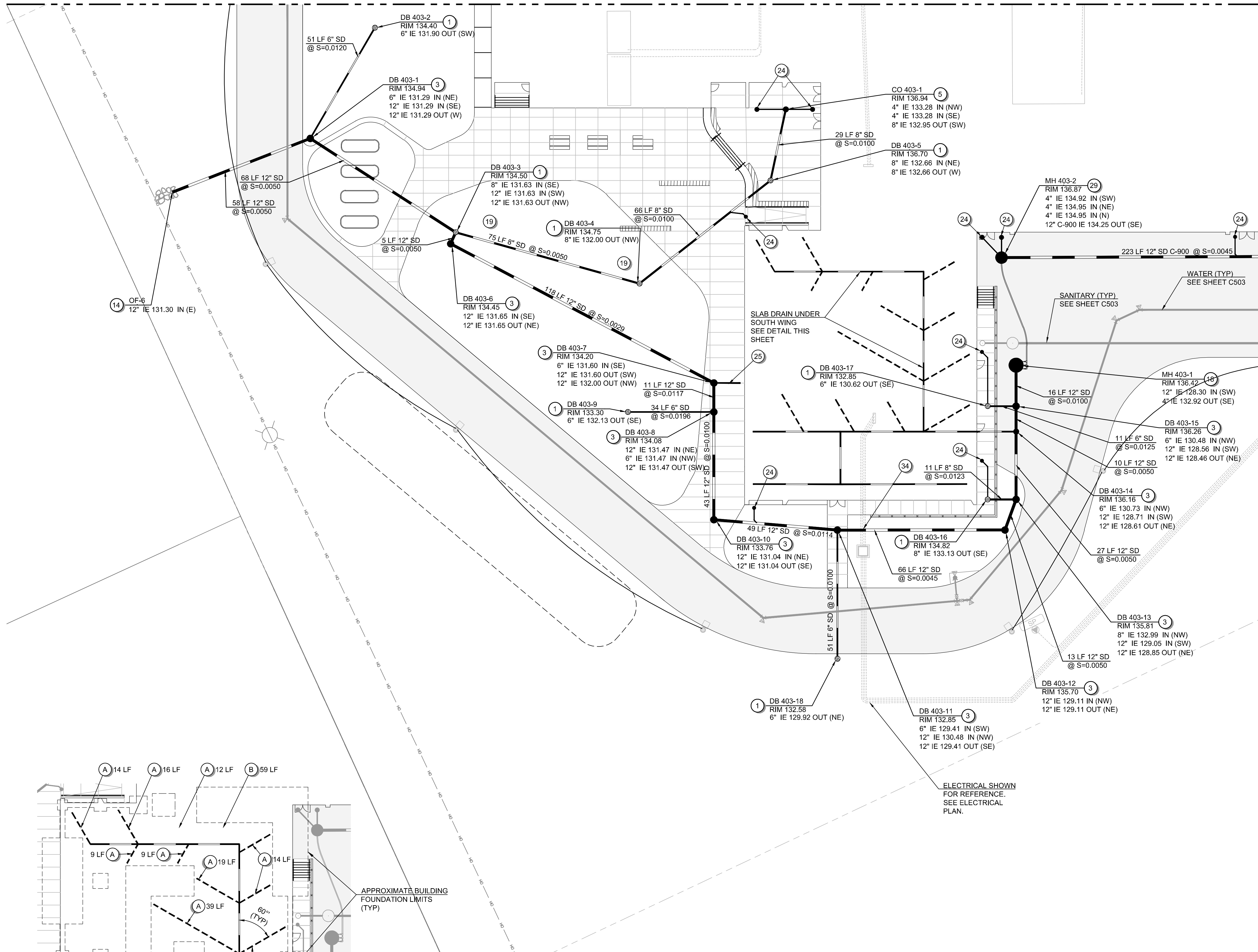
MATCH LINE - SEE SHEET C401

MATCH LINE - SEE SHEET C404

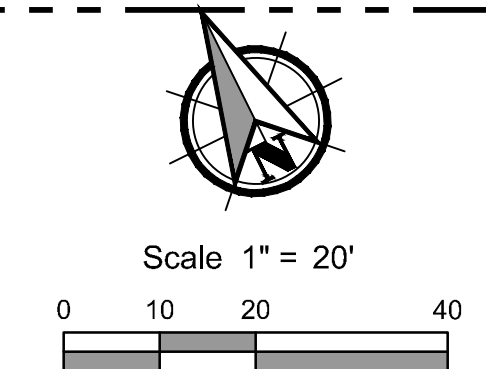
MATCH LINE - SEE SHEET C405

SLAB DRAIN NOTES:

- A INSTALL 6" SD PERF PIPE @ S=0.0100 MINIMUM
B INSTALL 8" SD PERF PIPE @ S=0.0050



Slab Drain Under South Wing Detail Scale 1" = 20'



Vertical text on the left margin: File name, user, and date information.

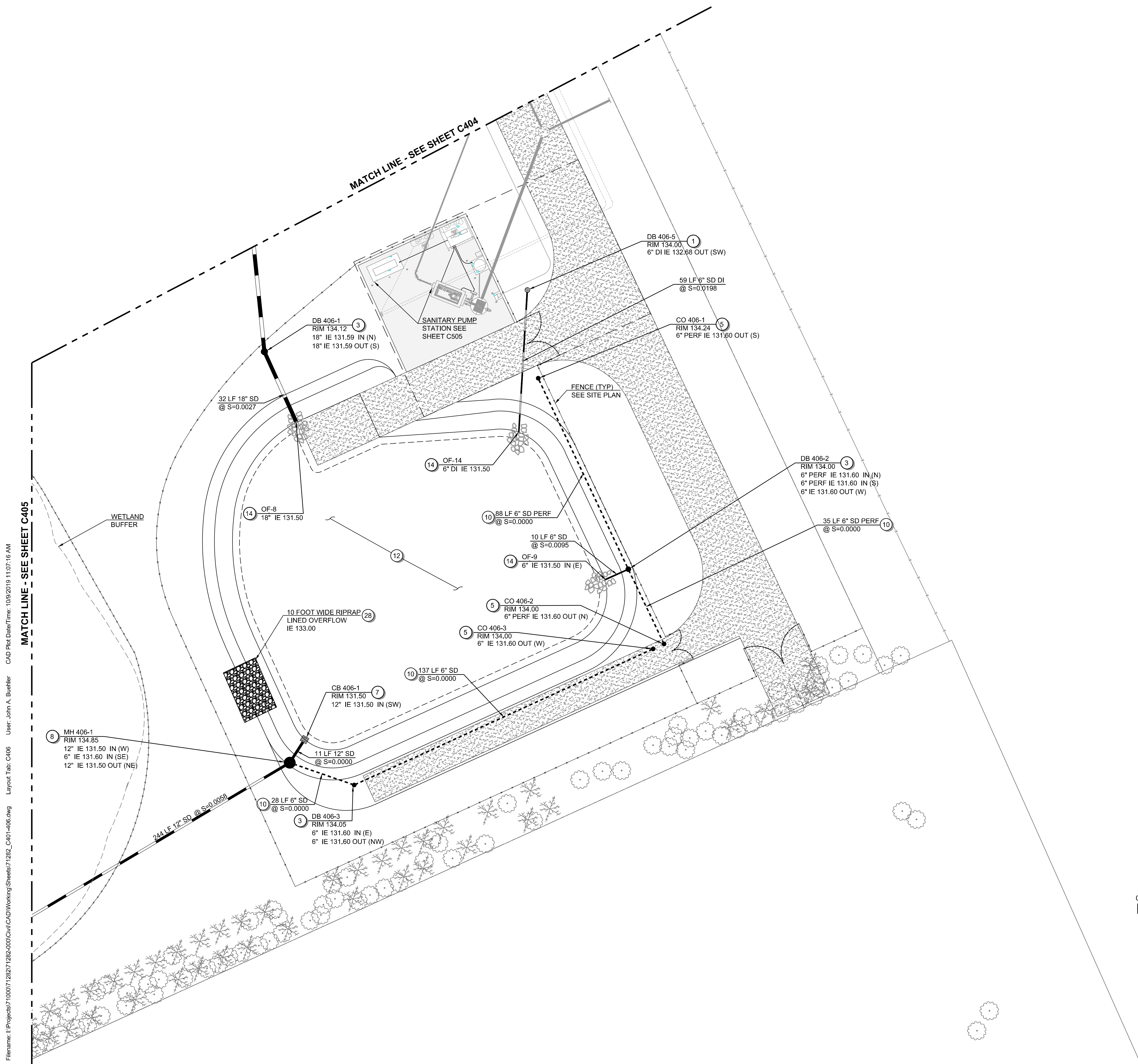
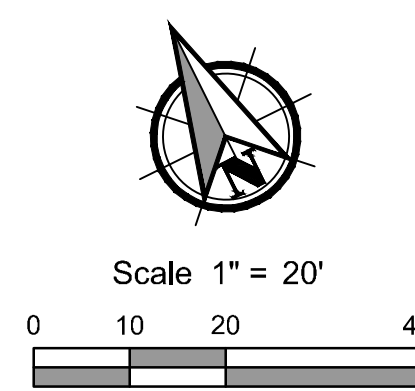
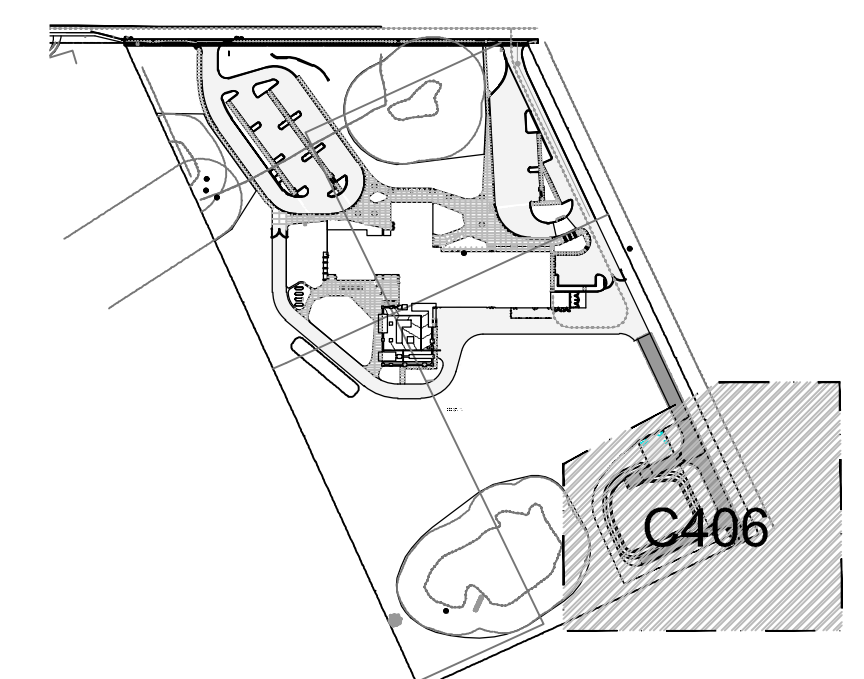
GENERAL NOTES

- SEE SHEET C001 FOR ABBREVIATIONS AND MASTER LEGEND. SEE SHEET C002-C003 FOR GENERAL NOTES.
- PIPE SIZE AS NOTED ON PLANS. PIPE MATERIAL TO BE PVC UNLESS OTHERWISE NOTED.
- SEE DETAIL SHEET C905 FOR PVC CATCH BASIN ANTI-FLOTATION REQUIREMENTS.

STORM SEWER NOTES:

- INSTALL 18" PVC CATCH BASIN WITH 18" DROP-IN GRATE, SEE DETAIL SHEET C905 AND C906.
- INSTALL 18" PVC CATCH BASIN WITH 18" DOME GRATE, SEE SHEET C905 AND C906 FOR STRUCTURE AND DOME DETAILS.
- INSTALL 18" PVC CATCH BASIN WITH 18" NON-SLIP SOLID COVER, SEE DETAIL SHEET C905 AND C906.
- INSTALL 24" PVC CATCH BASIN WITH 24" NON-SLIP SOLID COVER, SEE DETAIL SHEET C905 AND C906.
- INSTALL STORM SEWER CLEANOUT, SEE DETAIL SHEET C907.
- INSTALL 24" PVC CATCH BASIN WITH 24" DROP-IN GRATE, SEE DETAIL SHEET C905 AND C906.
- INSTALL SLOPED FIELD INLET, SEE DETAIL SM-9, SHEET C919.
- INSTALL FLOW CONTROL STRUCTURE, SEE DETAIL SHEET C911.
- INSTALL BIORETENTION FACILITY, SEE DETAIL SHEET C908. SEE TABLE SHEET C908 FOR AREA AND ELEVATION DETAILS.
- SEE POND PERIMETER PERFORATED TRENCH DETAIL, SEE SHEET C904.
- CONSTRUCT TIERED BIORETENTION FACILITY, SEE DETAIL SHEET C909.
- STORMWATER DETENTION POND, SEE DETAIL SHEET C910.
- INSTALL CULVERT INLET VAULT, SEE DETAIL SHEET C907.
- OUTFALL PROTECTION, SEE DETAIL SHEET C904.
- SEE FRONTAGE IMPROVEMENTS SHEETS C701 - C703.
- MAINTAIN 1' HORIZONTAL SEPARATION BETWEEN 18" DIAMETER PIPES. MAINTAIN 6" VERTICAL CLEARANCE AT CROSSING.
- STORM CONNECTION TO BUILDING. SEE MECHANICAL PLANS.
- STORM SUMP PUMP SYSTEM, SEE DETAIL SHEET C907.
- LANDSCAPE AREA. GRADE TO DRAIN. SEE LANDSCAPE PLANS.
- INSTALL TRASH RACK, SEE DETAIL SHEET C904.
- ROCK LINED DITCH, SEE TYPICAL SECTION SHEET C901.
- TRENCH DRAIN. SEE DETAIL SHEET C908.
- TRENCH DRAIN CATCH BASIN. SEE DETAIL SHEET C908.
- APPROXIMATE LOCATION OF 4" SD DOWNSPOUT CONNECTION (S=0.0200 FT/FT MIN). 4" x [STORM MAIN PIPE DIAMETER] WYE WHERE CONNECTION TIES TO MAIN. SEE ARCHITECTURAL PLANS.
- APPROXIMATE LOCATION OF 4" / 6" SD RAIN WATER LEADER CONNECTION (S=0.0200 FT/FT MIN). SEE MECHANICAL PLANS.
- 18" PIPES TO PROVIDE MIN 6" VERTICAL CLEARANCE WITH CROSSING PIPE. MAINTAIN 1' HORIZONTAL SEPARATION BETWEEN PIPES.
- WALL OR FOUNDATION PIPE PENETRATION. SEE STRUCTURAL DETAILS.
- CONSTRUCT GRAVEL OVERFLOW SPILLWAY, SEE POND DETAIL SHEET C910 FOR DETAILS.
- INSTALL 48" HP MANHOLE WITH 24" FRAME AND LID, SEE DETAIL SHEET C905. LID SHALL BE NON-SLIP.
- OVERFLOW DISPERSAL TRENCH. SEE DETAIL SHEET C909.
- SIDEWALK CROSS DRAIN OUTFALL PROTECTION. SEE DETAIL SHEET C904.
- INSTALL 18" PVC CATCH BASIN WITH 2'x2' GRATE, SEE DETAIL SHEET C905 AND C906
- THICKENED CONCRETE PER LOW COVER PIPE CROSSING DETAIL, SHEET SHEET C903.
- PIPE ZONE CDF BACKFILL PER DETAIL SHEET C905.

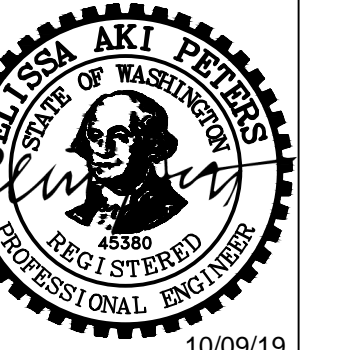
KEYMAP



MATCH LINE - SEE SHEET C405

MATCH LINE - SEE SHEET C404

File name: I:\Projects\1710007128217128210000\Civil\CAD\Working\Sheets\171282_C401-C406.dwg
 Layout Tab: C406
 User: John A. Buehler
 CAD Plot Date/Time: 10/9/2019 11:07:16 AM

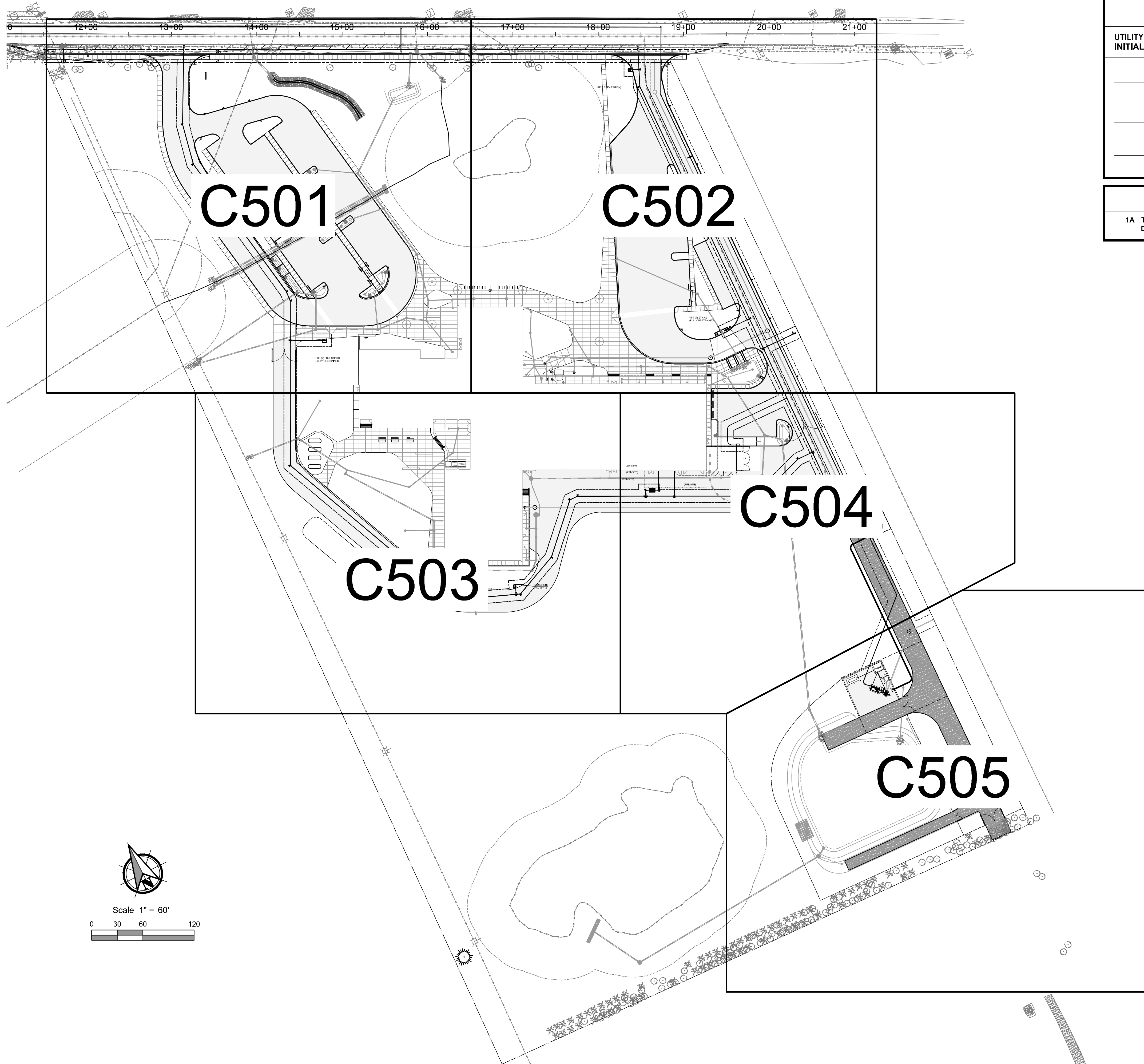


**CLARK PUBLIC UTILITIES - WATER SERVICES
CONSTRUCTION INSPECTION CHECKLIST**

UTILITY INSPECTOR INITIALS	DATE	PRIOR TO FINAL ACCEPTANCE
_____	_____	SATISFACTORY WATER SYSTEM BACTERIAL AND PRESSURE TESTS SUCCESSFULLY COMPLETED BY THE CLARK PUBLIC UTILITIES WATER SERVICES INSPECTOR
_____	_____	ALL STATE APPROVED BACKFLOW ASSEMBLIES INSTALLED, AND TEST REPORTS SUBMITTED TO CLARK COUNTY AND CLARK PUBLIC UTILITIES WATER SERVICES
_____	_____	ALL REQUIRED SIGNED EASEMENTS SUBMITTED TO CLARK PUBLIC UTILITIES WATER SERVICES FOR RECORDING

WATER SERVICE PRESSURE NOTE

1A THE STATIC WATER PRESSURE AT THE METERS WILL BE APPROXIMATELY 50 PSI TO 70 PSI, DEPENDING ON RESERVOIR LEVEL, NUMBER OF OPERATING WELLS, AND METER ELEVATION.



C501

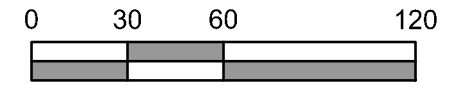
C502

C503

C504

C505

Scale 1" = 60'



GENERAL NOTES

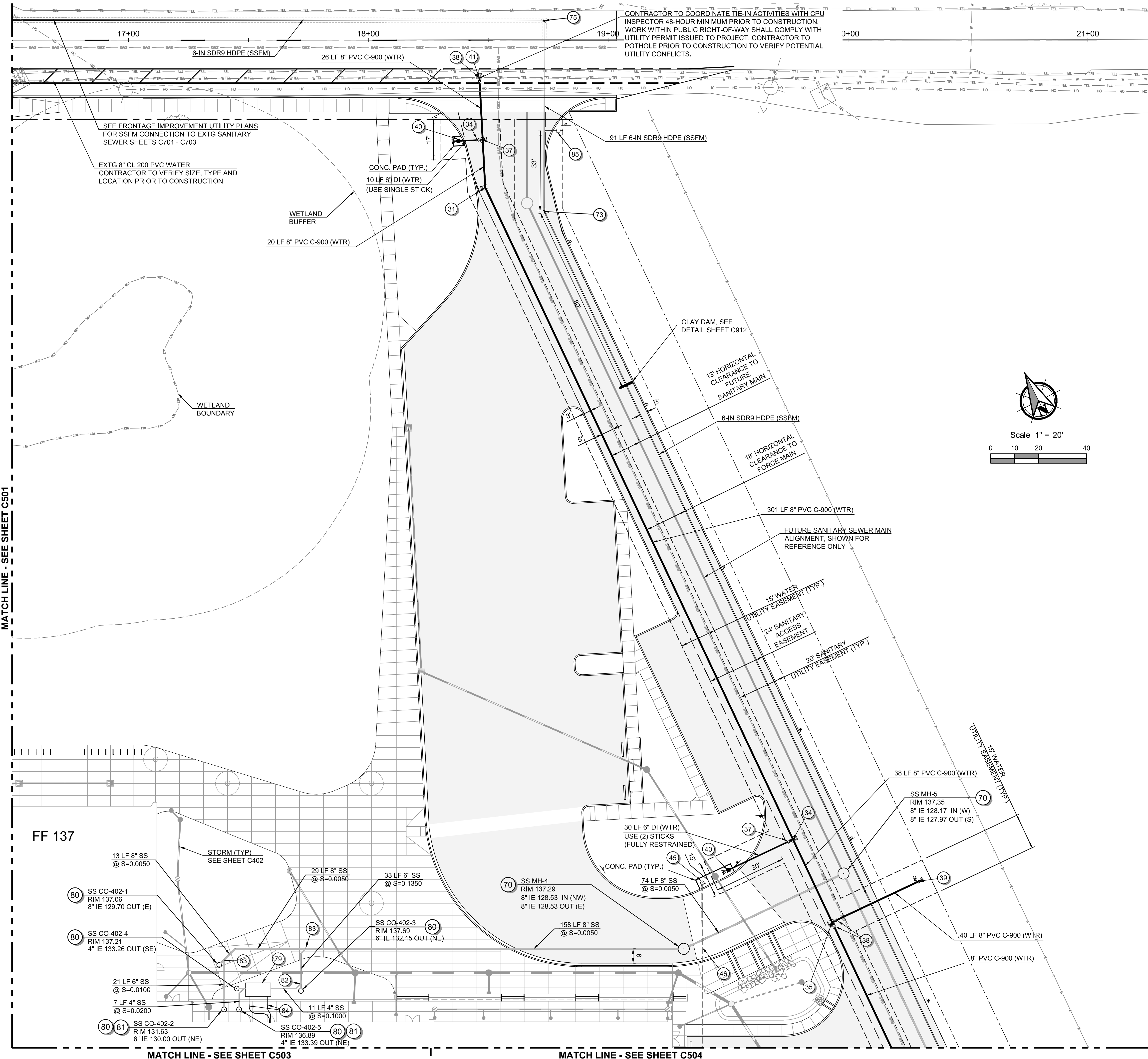
- SEE SHEET C001 FOR ABBREVIATIONS AND MASTER LEGEND. SEE SHEET C002-C003 FOR GENERAL NOTES.
- SEE SHEET C923 FOR RESTRAINT LENGTH TABLES AND DETAILS FOR THRUST BLOCKS.
- SEE SHEET C924 FOR CLARK PUD GENERAL WATER CONSTRUCTION NOTES.

WATER NOTES:

- 29 INSTALL 11-1/4" MJ BEND. RESTRAIN ALL JOINTS AND INSTALL THRUST BLOCK.
- 30 INSTALL 22-1/2" MJ BEND. RESTRAIN ALL JOINTS AND INSTALL THRUST BLOCK.
- 31 INSTALL 45° MJ BEND. RESTRAIN ALL JOINTS AND INSTALL THRUST BLOCK.
- 32 INSTALL 90° MJ BEND. RESTRAIN ALL JOINTS AND INSTALL THRUST BLOCK.
- 33 NOT USED.
- 34 INSTALL 8" X 6" MJ X SIDE FLG TEE. RESTRAIN ALL JOINTS AND INSTALL THRUST BLOCK. (1) 6" FLG X MJ GV W/ MJ RESTRAINTS.
- 35 INSTALL 8" X 8" FLG X FLG TEE. RESTRAIN ALL JOINTS. (1) 8" FLG X MJ ADAPTOR.
- 36 INSTALL 8" CAP. RESTRAIN ALL JOINTS.
- 37 INSTALL 6" FLG X MJ GATE VALVE WITH MJ RESTRAINT.
- 38 INSTALL 8" FLG X MJ GATE VALVE WITH MJ RESTRAINT.
- 39 INSTALL BLOW OFF ASSEMBLY, SEE DETAIL SHEET C924.
- 40 INSTALL STANDARD FIRE HYDRANT ASSEMBLY W/ MIN. 4' X 4' CONCRETE PAD, SEE DETAIL SHEET C924.
- 41 AFTER TESTING AND APPROVAL, HOT TAP TO EXISTING 8" WATER MAIN. SEE DETAIL SHEET C924.
- 42 CONNECT TO WATER INSIDE BUILDING. SEE PLUMBING PLANS. WA DOH APPROVED BACKFLOW DEVICE INSIDE BUILDING.
- 43 INSTALL 4" WATER METER BOX W/ TRAFFIC RATED LID & 4" METER. SEE DETAIL SHEET C923. COORDINATE WITH CLARK PUBLIC UTILITIES FOR METER INSTALLATION. SERVICE LATERAL SHALL BE FULLY RESTRAINED FROM TEE CONNECTION TO BUILDING.
- 44 INSTALL 8" X 8" FLG X FLG TEE. W/ TRUST BLOCK. ADDITIONALLY INSTALL (2) 8" FLG X MJ GV W/ MJ REST & (1) 8" FLG X FLG GV.
- 45 INSTALL FDC, SEE DETAIL SHEET C912.
- 46 FDC CONNECTION, PER BIDDER DESIGN.
- 47 INSTALL 2" WATER METER BOX AND METER FOR IRRIGATION. SEE DETAIL SHEET C923. SEE LANDSCAPE PLANS FOR CONNECTION AND BACKFLOW PREVENTION.
- 48 INSTALL 8" X 4" FLG X MJ REDUCER WITH MJ RESTRAINT.
- 49 INSTALL 1" WATER METER, SEE DETAIL SHEET C923. COORDINATE WITH CLARK PUBLIC UTILITIES FOR METER INSTALLATION.
- 50 INSTALL WA DOH APPROVED 1" REDUCED PRESSURE BACKFLOW ASSEMBLY (RPBA) DEVICE, SEE DETAIL SHEET C912.
- 51 INSTALL 1" WATER SERVICE PER CLARK PUBLIC UTILITIES STANDARD DETAILS
- 52 INSTALL PRIVATE YARD HYDRANT. SEE DETAIL SHEET C912.
- 53 INSTALL PRIVATE FIXED BOLLARD, SEE DETAIL SHEET C912.
- 54 INSTALL 4" FLG X MJ GATE VALVE WITH MJ RESTRAINT.

SANITARY SEWER NOTES:

- 70 INSTALL PRECAST MANHOLE, SEE DETAIL SS-7 SHEET C920.
- 71 INSTALL LATERAL STUB MARKER, SEE DETAIL SS-2 SHEET C920.
- 72 PROVIDE PACKAGED PUMP STATION 72-IN WETWELL WITH DISCONNECT PANEL, ODORHOG VENT, AND 612 VALVE VAULT. SEE DETAIL SHEETS C925-C926.
- 73 INSTALL RESTRAINED 11-1/4" BEND IN FORCE MAIN.
- 74 INSTALL RESTRAINED 45° BEND IN FORCE MAIN.
- 75 INSTALL BOLLARD TYPE 1 PER WSDOT STANDARD PLAN H-60.10, SHEET C917.
- 76 WALL OR FOUNDATION PIPE PENETRATION. SEE STRUCTURAL DETAILS.
- 77 40 KW PAD-MOUNTED EMERGENCY GENERATOR WITH 24-HR DIESEL TANK. SUPPLIED BY PACKAGED PUMP STATION MANUFACTURER. SEE STRUCTURAL PLANS FOR PAD AND ANCHORAGE DETAILS.
- 78 PUMP CONTROL PANEL, AUTOMATIC TRANSFER SWITCH, AND ELEC SERVICE DISCONNECT WITH 2-POST CONTROL SHELTER BY PACKAGED PUMP STATION MANUFACTURER.
- 79 INSTALL 1,500 GALLON GREASE INTECEPTOR, SEE DETAIL SHEET C912.
- 80 INSTALL SANITARY CLEANOUT, SEE DETAIL SS-14 SHEET C921.
- 81 SANITARY CONNECTION TO BUILDING. SEE MECHANICAL PLANS.
- 82 INSTALL 4" X 6" 45° SANITARY WYE.
- 83 INSTALL 6" X 8" 45° SANITARY WYE.
- 84 APPROXIMATE LOCATION OF GREASE INTERCEPTOR VENT PIPE, SEE MECHANICAL PLANS FOR CONNECTION.
- 85 INSTALL 2" AIR & VACUUM VALVE ASSEMBLY PER CITY OF LA CENTER STANDARD DETAIL SS-17, SEE SHEET C921.



CONTRACTOR TO COORDINATE TIE-IN ACTIVITIES WITH CPU INSPECTOR 48-HOUR MINIMUM PRIOR TO CONSTRUCTION. WORK WITHIN PUBLIC RIGHT-OF-WAY SHALL COMPLY WITH UTILITY PERMIT ISSUED TO PROJECT. CONTRACTOR TO POT-HOLE PRIOR TO CONSTRUCTION TO VERIFY POTENTIAL UTILITY CONFLICTS.

SEE FRONTAGE IMPROVEMENT UTILITY PLANS FOR SSFM CONNECTION TO EXTG SANITARY SEWER SHEETS C701 - C703

EXTG 8" CL 200 PVC WATER CONTRACTOR TO VERIFY SIZE, TYPE AND LOCATION PRIOR TO CONSTRUCTION

CONC. PAD (TYP.) 10 LF 6" DI (WTR) (USE SINGLE STICK)

WETLAND BUFFER 20 LF 8" PVC C-900 (WTR)

CLAY DAM, SEE DETAIL SHEET C912

13' HORIZONTAL CLEARANCE TO FUTURE SANITARY MAIN

6-IN SDR9 HDPE (SSFM)

18' HORIZONTAL CLEARANCE TO FORCE MAIN

301 LF 8" PVC C-900 (WTR) FUTURE SANITARY SEWER MAIN ALIGNMENT, SHOWN FOR REFERENCE ONLY

16" WATER UTILITY EASEMENT (TYP.)

24" SANITARY ACCESS EASEMENT

20" SANITARY UTILITY EASEMENT (TYP.)

16" WATER UTILITY EASEMENT (TYP.)

38 LF 8" PVC C-900 (WTR)

30 LF 6" DI (WTR) USE (2) STICKS (FULLY RESTRAINED)

74 LF 8" SS @ S=0.0050

158 LF 8" SS @ S=0.0050

40 LF 8" PVC C-900 (WTR)

8" PVC C-900 (WTR)

13 LF 8" SS @ S=0.0050

SS CO-402-1 RIM 137.06 8" IE 129.70 OUT (E)

SS CO-402-4 RIM 137.21 4" IE 133.26 OUT (SE)

21 LF 6" SS @ S=0.0100

7 LF 4" SS @ S=0.0200

SS CO-402-2 RIM 131.63 6" IE 130.00 OUT (NE)

29 LF 8" SS @ S=0.0050

SS CO-402-3 RIM 137.69 6" IE 132.15 OUT (NE)

33 LF 6" SS @ S=0.1350

11 LF 4" SS @ S=0.1000

SS CO-402-5 RIM 136.89 4" IE 133.39 OUT (NE)

SS MH-4 RIM 137.29 8" IE 128.53 IN (NW) 8" IE 128.53 OUT (E)

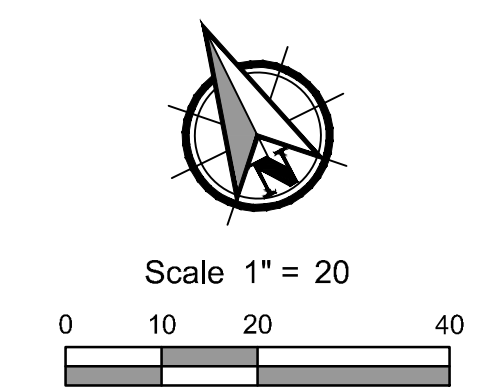
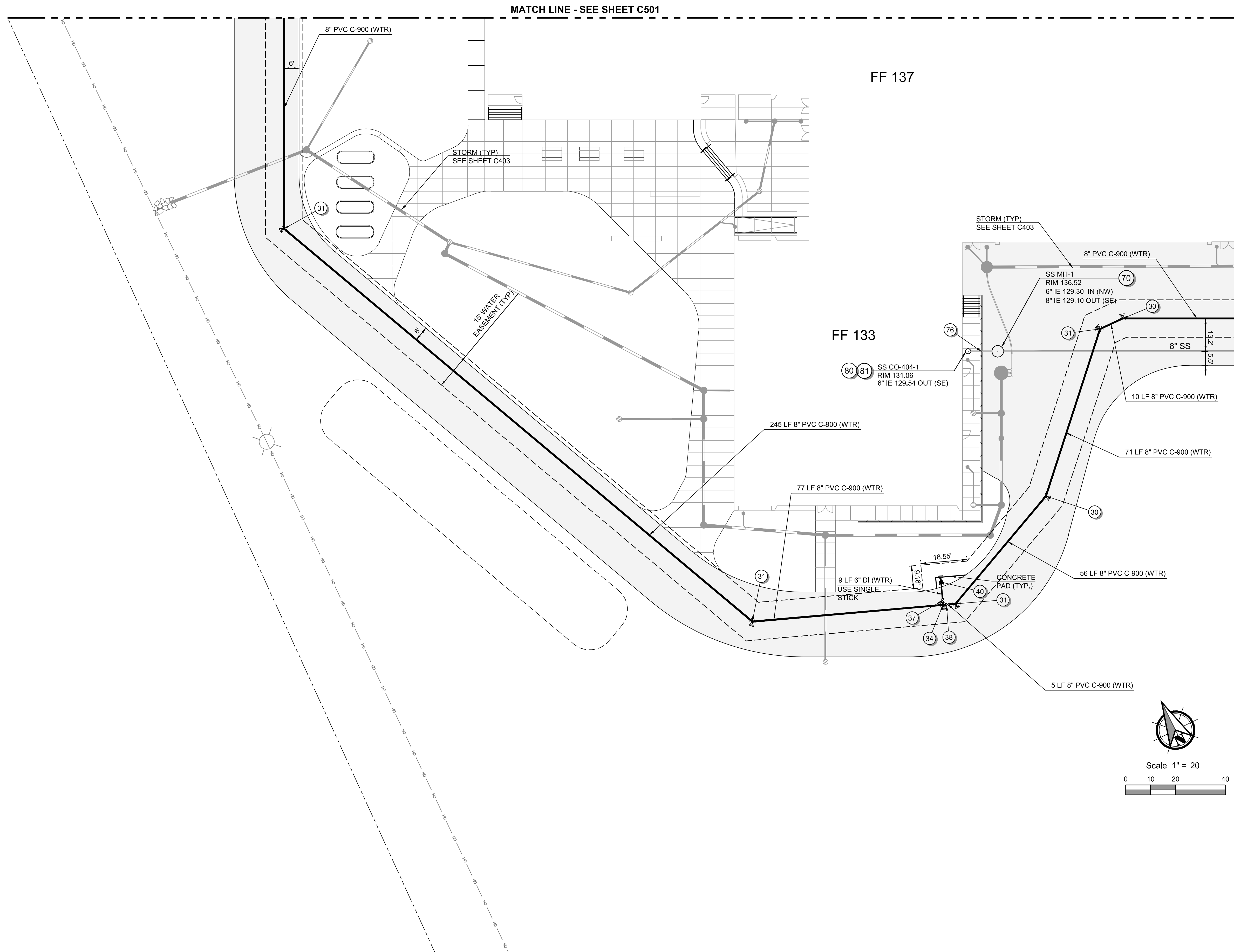
CONC. PAD (TYP.)

74 LF 8" SS @ S=0.0050

158 LF 8" SS @ S=0.0050

MATCH LINE - SEE SHEET C501

MATCH LINE - SEE SHEET C504



GENERAL NOTES

- SEE SHEET C001 FOR ABBREVIATIONS AND MASTER LEGEND. SEE SHEET C002-C003 FOR GENERAL NOTES.
- SEE SHEET C923 FOR RESTRAINT LENGTH TABLES AND DETAILS FOR THRUST BLOCKS.
- SEE SHEET C924 FOR CLARK PUD GENERAL WATER CONSTRUCTION NOTES.

WATER NOTES:

- INSTALL 11-1/4" MJ BEND. RESTRAIN ALL JOINTS AND INSTALL THRUST BLOCK.
- INSTALL 22-1/2" MJ BEND. RESTRAIN ALL JOINTS AND INSTALL THRUST BLOCK.
- INSTALL 45" MJ BEND. RESTRAIN ALL JOINTS AND INSTALL THRUST BLOCK.
- INSTALL 90" MJ BEND. RESTRAIN ALL JOINTS AND INSTALL THRUST BLOCK.
- NOT USED.
- INSTALL 8" X 6" MJ X SIDE FLG TEE. RESTRAIN ALL JOINTS AND INSTALL THRUST BLOCK. (1) 6" FLG X MJ GV W/ MJ RESTRAINTS.
- INSTALL 8" X 8" FLG X FLG TEE. RESTRAIN ALL JOINTS. (1) 8" FLG X MJ ADAPTOR.
- INSTALL 8" CAP. RESTRAIN ALL JOINTS.
- INSTALL 6" FLG X MJ GATE VALVE WITH MJ RESTRAINT.
- INSTALL 8" FLG X MJ GATE VALVE WITH MJ RESTRAINT.
- INSTALL BLOW OFF ASSEMBLY, SEE DETAIL SHEET C924.
- INSTALL STANDARD FIRE HYDRANT ASSEMBLY W/ MIN. 4' x 4' CONCRETE PAD, SEE DETAIL SHEET C924.
- AFTER TESTING AND APPROVAL, HOT TAP TO EXISTING 8" WATER MAIN. SEE DETAIL SHEET C924.
- CONNECT TO WATER INSIDE BUILDING. SEE PLUMBING PLANS. WA DOH APPROVED BACKFLOW DEVICE INSIDE BUILDING.
- INSTALL 4" WATER METER BOX W/ TRAFFIC RATED LID & 4" METER. SEE DETAIL SHEET C923. COORDINATE WITH CLARK PUBLIC UTILITIES FOR METER INSTALLATION. SERVICE LATERAL SHALL BE FULLY RESTRAINED FROM TEE CONNECTION TO BUILDING.
- INSTALL 8" X 8" FLG X FLG TEE. W/ TRUST BLOCK. ADDITIONALLY INSTALL (2) 8" FLG X MJ GV W/ MJ REST & (1) 8" FLG X FLG GV.
- INSTALL FDC, SEE DETAIL SHEET C912.
- FDC CONNECTION, PER BIDDER DESIGN.
- INSTALL 2" WATER METER BOX AND METER FOR IRRIGATION. SEE DETAIL SHEET C923. SEE LANDSCAPE PLANS FOR CONNECTION AND BACKFLOW PREVENTION.
- INSTALL 8" X 4" FLG X MJ REDUCER WITH MJ RESTRAINT.
- INSTALL 1" WATER METER, SEE DETAIL SHEET C923. COORDINATE WITH CLARK PUBLIC UTILITIES FOR METER INSTALLATION.
- INSTALL WA DOH APPROVED 1" REDUCED PRESSURE BACKFLOW ASSEMBLY (RPBA) DEVICE, SEE DETAIL SHEET C912.
- INSTALL 1" WATER SERVICE PER CLARK PUBLIC UTILITIES STANDARD DETAILS
- INSTALL PRIVATE YARD HYDRANT. SEE DETAIL SHEET C912.
- INSTALL PRIVATE FIXED BOLLARD, SEE DETAIL SHEET C912.
- INSTALL 4" FLG X MJ GATE VALVE WITH MJ RESTRAINT.

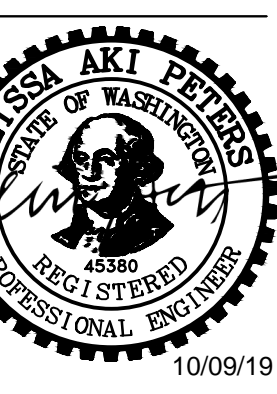
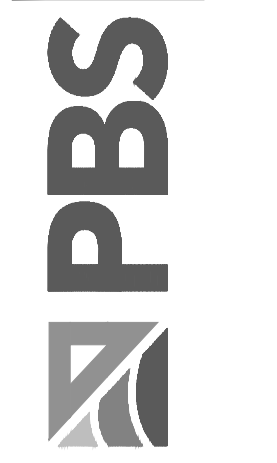
SANITARY SEWER NOTES:

- INSTALL PRECAST MANHOLE, SEE DETAIL SS-7 SHEET C920.
- INSTALL LATERAL STUB MARKER, SEE DETAIL SS-2 SHEET C920.
- PROVIDE PACKAGED PUMP STATION 72-IN WETWELL WITH DISCONNECT PANEL, ODORHOG VENT, AND 612 VALVE VAULT, SEE DETAIL SHEETS C925-C926.
- INSTALL RESTRAINED 11-1/4" BEND IN FORCE MAIN.
- INSTALL RESTRAINED 45" BEND IN FORCE MAIN.
- INSTALL BOLLARD TYPE 1 PER WSDOT STANDARD PLAN H-60.10, SHEET C917.
- WALL OR FOUNDATION PIPE PENETRATION. SEE STRUCTURAL DETAILS.
- 40 KW PAD-MOUNTED EMERGENCY GENERATOR WITH 24-HR DIESEL TANK. SUPPLIED BY PACKAGED PUMP STATION MANUFACTURER. SEE STRUCTURAL PLANS FOR PAD AND ANCHORAGE DETAILS.
- PUMP CONTROL PANEL, AUTOMATIC TRANSFER SWITCH, AND ELEC SERVICE DISCONNECT WITH 2-POST CONTROL SHELTER BY PACKAGED PUMP STATION MANUFACTURER.
- INSTALL 1,500 GALLON GREASE INTECEPTOR, SEE DETAIL SHEET C912.
- INSTALL SANITARY CLEANOUT, SEE DETAIL SS-14 SHEET C921.
- SANITARY CONNECTION TO BUILDING. SEE MECHANICAL PLANS.
- INSTALL 4" x 6" 45" SANITARY WYE.
- INSTALL 6" x 8" 45" SANITARY WYE.
- APPROXIMATE LOCATION OF GREASE INTERCEPTOR VENT PIPE, SEE MECHANICAL PLANS FOR CONNECTION.
- INSTALL 2" AIR & VACUUM VALVE ASSEMBLY PER CITY OF LA CENTER STANDARD DETAIL SS-17, SEE SHEET C921.

REVISIONS

PERMIT / BID SET

PBS Engineering and Environmental Inc. 601 Vancouver, WA 98660 360.695.3488 pbseinc.com



LA CENTER SCHOOL DISTRICT
LA CENTER NEW MIDDLE SCHOOL
 2001 NE LOCKWOOD CREEK ROAD, LA CENTER, WA 98629



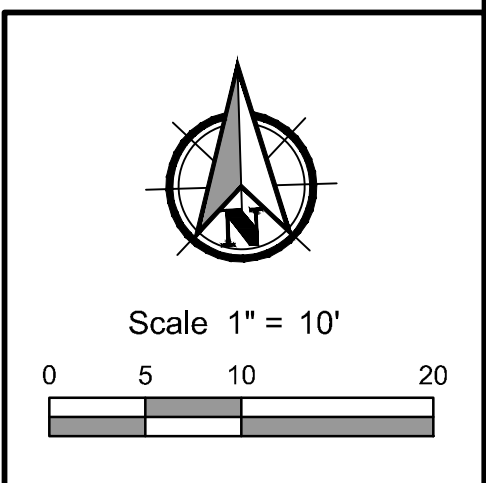
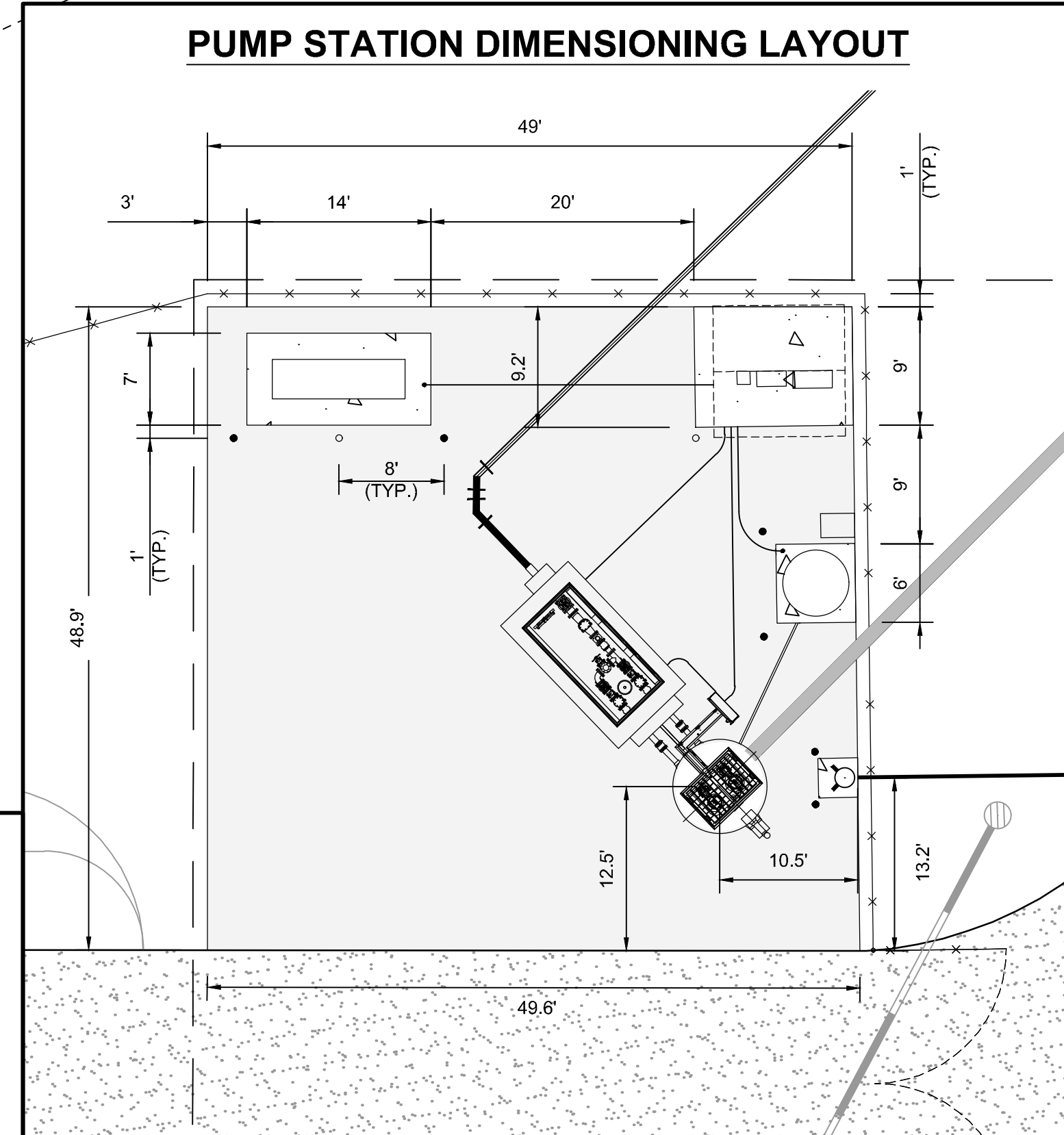
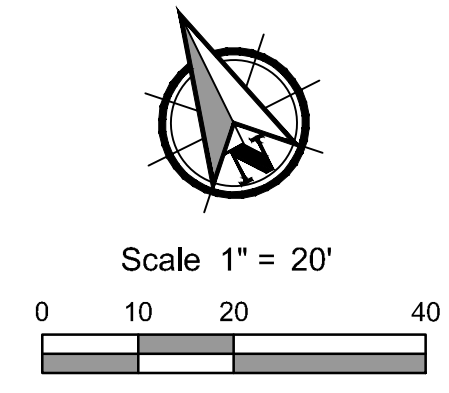
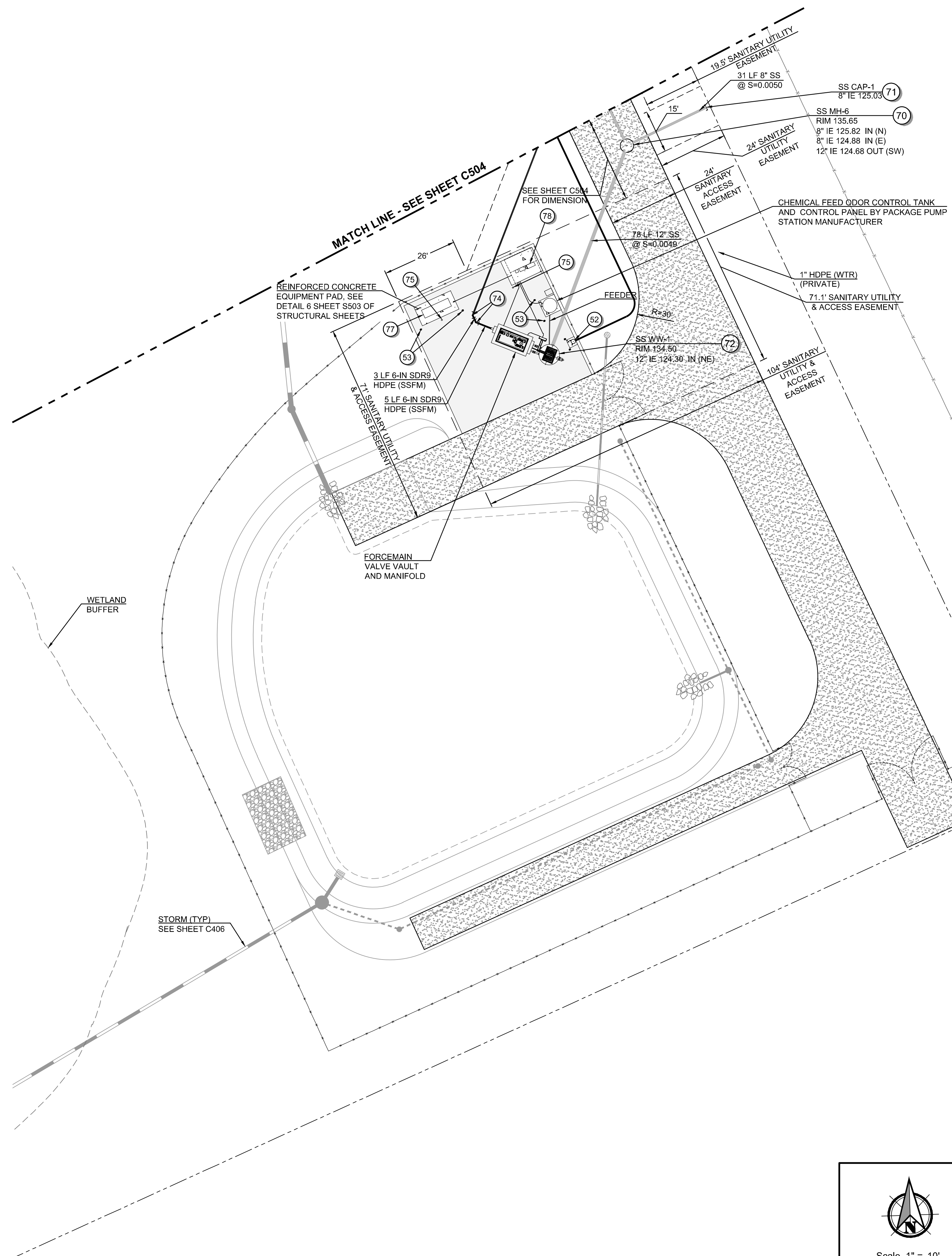
NAC
 ARCHITECTURE
 nacarchitecture.com
 2025 FIRST AVENUE | SUITE 300
 SEATTLE WA 98121
 P.206.441.4522

NAC NO: 121-18009
 DRAWN: JAB/JRM
 CHECKED: EAP
 DATE: 10-8-2019

SANITARY SEWER AND WATER PLANS

CD SUBMITTAL
C503

Filename: I:\Projects\171000171282\171282\171282-000\171282_C500-506.dwg User: John A. Buehler CAD Plot Date/Time: 10/9/2019 11:08:55 AM



GENERAL NOTES

1. SEE SHEET C001 FOR ABBREVIATIONS AND MASTER LEGEND. SEE SHEET C002-C003 FOR GENERAL NOTES.
2. SEE SHEET C923 FOR RESTRAINT LENGTH TABLES AND DETAILS FOR THRUST BLOCKS.
3. SEE SHEET C924 FOR CLARK PUD GENERAL WATER CONSTRUCTION NOTES.

WATER NOTES:

29. INSTALL 11-1/4° MJ BEND. RESTRAIN ALL JOINTS AND INSTALL THRUST BLOCK.
30. INSTALL 22-1/2° MJ BEND. RESTRAIN ALL JOINTS AND INSTALL THRUST BLOCK.
31. INSTALL 45° MJ BEND. RESTRAIN ALL JOINTS AND INSTALL THRUST BLOCK.
32. INSTALL 90° MJ BEND. RESTRAIN ALL JOINTS AND INSTALL THRUST BLOCK.
33. NOT USED.
34. INSTALL 8" X 6" MJ X SIDE FLG TEE. RESTRAIN ALL JOINTS AND INSTALL THRUST BLOCK. (1) 6" FLG X MJ GV W/ MJ RESTRAINTS.
35. INSTALL 8" X 8" FLG X FLG TEE. RESTRAIN ALL JOINTS. (1) 8" FLG X MJ ADAPTOR.
36. INSTALL 8" CAP. RESTRAIN ALL JOINTS.
37. INSTALL 6" FLG X MJ GATE VALVE WITH MJ RESTRAINT.
38. INSTALL 8" FLG X MJ GATE VALVE WITH MJ RESTRAINT.
39. INSTALL BLOW OFF ASSEMBLY, SEE DETAIL SHEET C924.
40. INSTALL STANDARD FIRE HYDRANT ASSEMBLY W/ MIN. 4' x 4' CONCRETE PAD, SEE DETAIL SHEET C924.
41. AFTER TESTING AND APPROVAL, HOT TAP TO EXISTING 8" WATER MAIN. SEE DETAIL SHEET C924.
42. CONNECT TO WATER INSIDE BUILDING. SEE PLUMBING PLANS. WA DOH APPROVED BACKFLOW DEVICE INSIDE BUILDING.
43. INSTALL 4" WATER METER BOX W/ TRAFFIC RATED LID & 4" METER. SEE DETAIL SHEET C923. COORDINATE WITH CLARK PUBLIC UTILITIES FOR METER INSTALLATION. SERVICE LATERAL SHALL BE FULLY RESTRAINED FROM TEE CONNECTION TO BUILDING.
44. INSTALL 8" X 8" FLG X FLG TEE. W/ TRUST BLOCK. ADDITIONALLY INSTALL (2) 8" FLG X MJ GV W/ MJ REST & (1) 8" FLG X FLG GV.
45. INSTALL FDC, SEE DETAIL SHEET C912.
46. FDC CONNECTION, PER BIDDER DESIGN.
47. INSTALL 2" WATER METER BOX AND METER FOR IRRIGATION. SEE DETAIL SHEET C923. SEE LANDSCAPE PLANS FOR CONNECTION AND BACKFLOW PREVENTION.
48. INSTALL 8" X 4" FLG X MJ REDUCER WITH MJ RESTRAINT.
49. INSTALL 1" WATER METER, SEE DETAIL SHEET C923. COORDINATE WITH CLARK PUBLIC UTILITIES FOR METER INSTALLATION.
50. INSTALL WA DOH APPROVED 1" REDUCED PRESSURE BACKFLOW ASSEMBLY (RPBA) DEVICE, SEE DETAIL SHEET C912.
51. INSTALL 1" WATER SERVICE PER CLARK PUBLIC UTILITIES STANDARD DETAILS
52. INSTALL PRIVATE YARD HYDRANT. SEE DETAIL SHEET C912.
53. INSTALL PRIVATE FIXED BOLLARD, SEE DETAIL SHEET C912.
54. INSTALL 4" FLG X MJ GATE VALVE WITH MJ RESTRAINT.

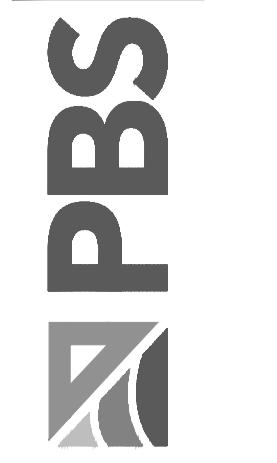
SANITARY SEWER NOTES:

70. INSTALL PRECAST MANHOLE, SEE DETAIL SS-7 SHEET C920.
71. INSTALL LATERAL STUB MARKER, SEE DETAIL SS-2 SHEET C920.
72. PROVIDE PACKAGED PUMP STATION 72-IN WETWELL WITH DISCONNECT PANEL, ODORHOG VENT, AND 612 VALVE VAULT. SEE DETAIL SHEETS C925-C926.
73. INSTALL RESTRAINED 11-1/4° BEND IN FORCE MAIN.
74. INSTALL RESTRAINED 45° BEND IN FORCE MAIN.
75. INSTALL BOLLARD TYPE 1 PER WSDOT STANDARD PLAN H-60.10, SHEET C917.
76. WALL OR FOUNDATION PIPE PENETRATION. SEE STRUCTURAL DETAILS.
77. 40 KW PAD-MOUNTED EMERGENCY GENERATOR WITH 24-HR DIESEL TANK. SUPPLIED BY PACKAGED PUMP STATION MANUFACTURER. SEE STRUCTURAL PLANS FOR PAD AND ANCHORAGE DETAILS.
78. PUMP CONTROL PANEL, AUTOMATIC TRANSFER SWITCH, AND ELEC SERVICE DISCONNECT WITH 2-POST CONTROL SHELTER BY PACKAGED PUMP STATION MANUFACTURER.
79. INSTALL 1,500 GALLON GREASE INTECEPTOR, SEE DETAIL SHEET C912.
80. INSTALL SANITARY CLEANOUT, SEE DETAIL SS-14 SHEET C921.
81. SANITARY CONNECTION TO BUILDING. SEE MECHANICAL PLANS.
82. INSTALL 4" x 6" 45° SANITARY WYE.
83. INSTALL 6" x 8" 45° SANITARY WYE.
84. APPROXIMATE LOCATION OF GREASE INTERCEPTOR VENT PIPE, SEE MECHANICAL PLANS FOR CONNECTION.
85. INSTALL 2" AIR & VACUUM VALVE ASSEMBLY PER CITY OF LA CENTER STANDARD DETAIL SS-17, SEE SHEET C921.

REVISIONS

PERMIT / BID SET

PBS Engineering and Environmental Inc. 601 Vancouver, WA 98660 360.695.3488 pbseia.com



LA CENTER SCHOOL DISTRICT
LA CENTER NEW MIDDLE SCHOOL
 2001 NE LOCKWOOD CREEK ROAD, LA CENTER, WA 98629



NAC
 ARCHITECTURE
 nacarchitecture.com
 2025 FIRST AVENUE | SUITE 300
 SEATTLE WA 98121
 P:206.441.4522

NAC NO: 121-18009
 DRAWN: JAB/JRM
 CHECKED: EAP
 DATE: 10-8-2019

SANITARY SEWER AND WATER PLANS

CD SUBMITTAL
C505

© 2017 NAC, Inc.