

GENERAL NOTES

- SEE CITY OF LA CENTER STANDARD DETAILS ER-1A AND ER-1B FOR GENERAL EROSION CONTROL NOTES, SHEET C204.
- APPROVAL OF THIS EROSION/SEDIMENTATION CONTROL (ESC) PLAN DOES NOT CONSTITUTE AN APPROVAL OF PERMANENT ROAD IMPROVEMENTS OR DRAINAGE DESIGN (E.G., SIZE AND LOCATION OF ROADS, PIPES, RESTRICTORS, CHANNELS, RETENTION FACILITIES, UTILITIES, ETC.)
- THE IMPLEMENTATION OF THESE ESC PLANS AND THE CONSTRUCTION, MAINTENANCE, REPLACEMENT, AND UPGRADING OF THESE ESC FACILITIES IS THE RESPONSIBILITY OF THE APPLICANT/CONTRACTOR UNTIL ALL CONSTRUCTION IS COMPLETED AND APPROVED AND VEGETATION/LANDSCAPING IS ESTABLISHED.
- THE BOUNDARIES OF THE CLEARING LIMITS SHOWN ON THIS PLAN (DENOTED BY CUT / FILL BOUNDARY LINES) SHALL BE CLEARLY FLAGGED IN THE FIELD PRIOR TO CONSTRUCTION. DURING THE CONSTRUCTION PERIOD, NO DISTURBANCE BEYOND THE FLAGGED CLEARING LIMITS SHALL BE PERMITTED. THE FLAGGING SHALL BE MAINTAINED BY THE APPLICANT/CONTRACTOR FOR THE DURATION OF CONSTRUCTION.
- THE ESC FACILITIES SHOWN ON THIS PLAN MUST BE CONSTRUCTED IN CONJUNCTION WITH ALL CLEARING AND GRADING ACTIVITIES AND IN SUCH A MANNER AS TO ENSURE THAT SEDIMENT AND SEDIMENT-LADEN WATER DO NOT ENTER THE DRAINAGE SYSTEM OR ROADWAYS, NOR VIOLATE APPLICABLE WATER STANDARDS.
- THE ESC FACILITIES SHOWN ON THIS PLAN ARE THE MINIMUM REQUIREMENTS FOR ANTICIPATED SITE CONDITIONS. DURING THE CONSTRUCTION PERIOD, THESE ESC FACILITIES SHALL BE UPGRADED AS NEEDED FOR UNEXPECTED STORM EVENTS AND TO ENSURE THAT SEDIMENT AND SEDIMENT-LADEN WATER DO NOT LEAVE THE SITE.
- THE ESC FACILITIES SHALL BE INSPECTED DAILY BY THE APPLICANT/CONTRACTOR AND MAINTAINED AS NECESSARY TO ENSURE THEIR CONTINUED FUNCTIONING.
- THE ESC FACILITIES ON INACTIVE SITES SHALL BE INSPECTED AND MAINTAINED A MINIMUM OF ONCE A MONTH OR WITHIN THE 48 HOURS FOLLOWING A STORM EVENT.
- AT NO TIME SHALL MORE THAN ONE FOOT OF SEDIMENT BE ALLOWED TO ACCUMULATE WITHIN A TRAPPED CATCH BASIN. ALL CATCH BASINS AND CONVEYANCE LINES SHALL BE CLEANED PRIOR TO PAVING. THE CLEANING OPERATION SHALL NOT FLUSH SEDIMENT-LADEN WATER INTO THE DOWNSTREAM SYSTEM.
- A STABILIZED CONSTRUCTION ENTRANCE SHALL BE INSTALLED AT THE BEGINNING OF CONSTRUCTION AND MAINTAINED FOR THE DURATION OF THE PROJECT. ADDITIONAL MEASURES MAY BE REQUIRED TO ENSURE THAT ALL PAVED AREAS ARE KEPT CLEAN FOR THE DURATION OF THE PROJECT.
- CONTRACTOR SHALL COMPLY WITH CONDITIONS OF APPROVAL WITH THE NPDES CONSTRUCTION STORMWATER GENERAL PERMIT (WAR308200) AND THE SWPPP.

EROSION CONTROL NOTES :

- SEEDING ON CUT AND FILL SLOPES AND DISTURBED AREAS. SEE LANDSCAPE SHEETS.
- STANDARD CONSTRUCTION ENTRANCE PER CITY OF LA CENTER STD. DETAIL ER-2 (MIN. 100 FT), SEE SHEET C204.
- FILTER FABRIC FENCE PER CITY OF LA CENTER STD. DETAIL ER-3, SEE SHEET C204.
- HIGH VISIBILITY ORANGE FILTER FABRIC FENCE PER CITY OF LA CENTER STD. DETAIL ER-3, SEE SHEET C204.
- PLACE PLASTIC SHEETING OVER STOCKPILE PER CITY OF LA CENTER STD. DETAIL ER-6, SEE SHEET C204.
- STORM DRAIN INLET PROTECTION PER WSDOT STD. PLAN I-40.10 AND I-40.20, SEE SHEET C205.
- REMOVE EXISTING TREES AND TREES NOT SURVEYED (TREES LESS THAN 6" DIAMETER AT BREST HEIGHT WERE NOT SURVEYED).
- POINT OF COMPLIANCE.
- BIO-FILTER BAGS PER STANDARD DETAIL E3C, SEE SHEET C205.

LEGEND:

EXISTING CONTOUR	---	410
PROPOSED CONTOUR	—	410
FILTER FABRIC FENCE	-x-x-x-x-x-	
HIGH VISIBILITY ORANGE FILTER FABRIC FENCE	-o-o-o-o-o-	
STANDARD CONSTRUCTION ENTRANCE		
STOCKPILE AREA		
INLET PROTECTION		
BIO-FILTER BAG		
CLEARING AND GRADING LIMITS (CUT / FILL)	C / F	
ADD'L CLEARING / GRUBBING OUTSIDE CUT / FILL LIMITS		

Unadjusted Earthwork Quantities

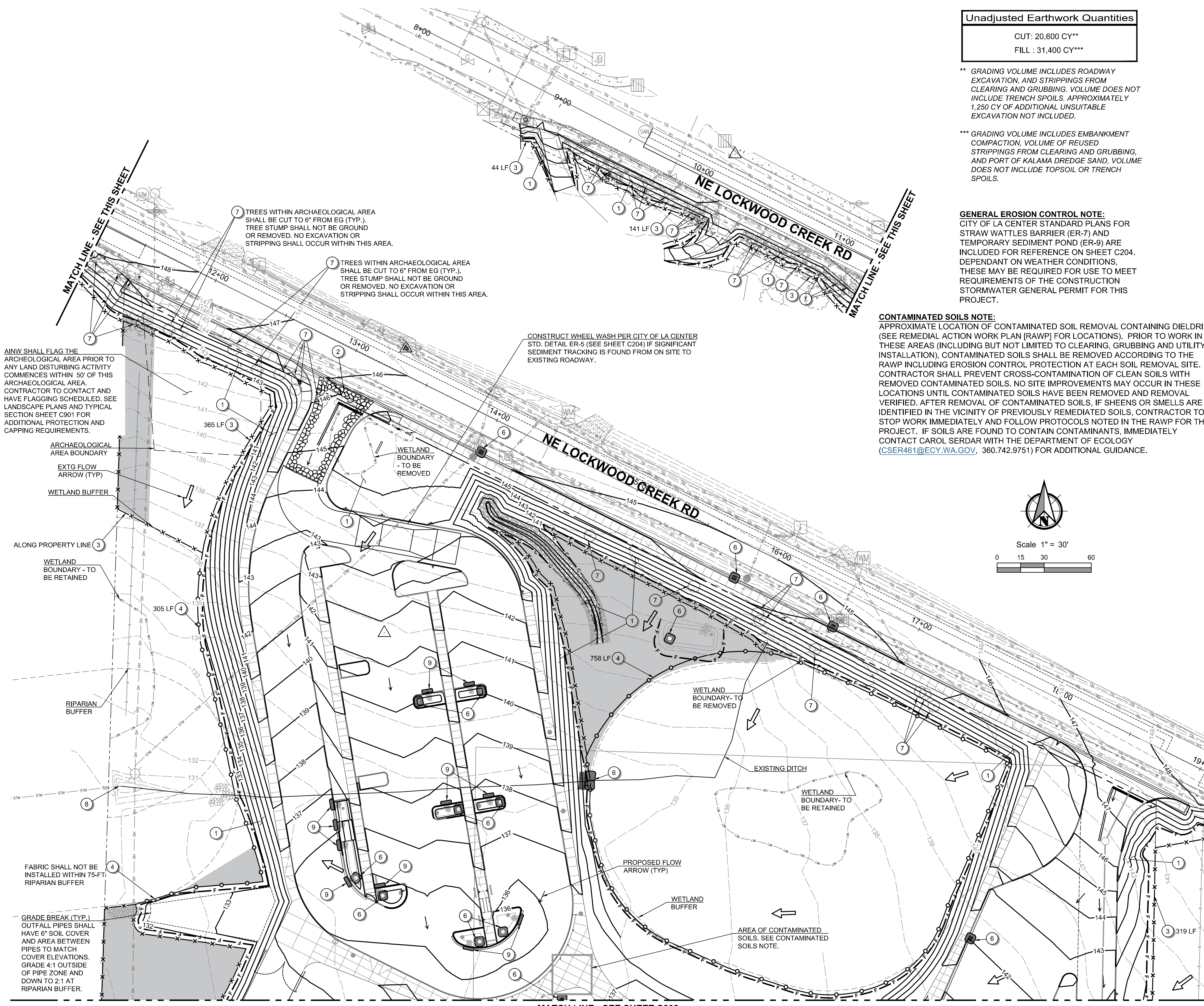
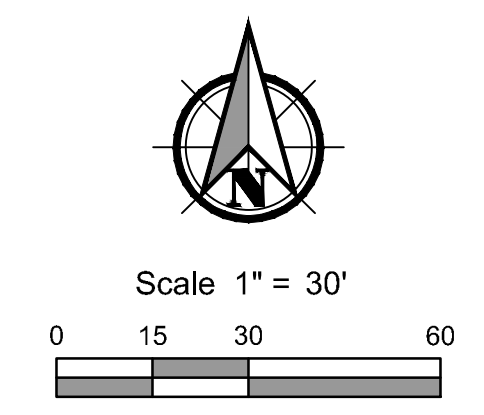
CUT: 20,600 CY**
FILL : 31,400 CY***

** GRADING VOLUME INCLUDES ROADWAY EXCAVATION, AND STRIPPINGS FROM CLEARING AND GRUBBING. VOLUME DOES NOT INCLUDE TRENCH SPOILS. APPROXIMATELY 1,250 CY OF ADDITIONAL UNSUITABLE EXCAVATION NOT INCLUDED.

*** GRADING VOLUME INCLUDES EMBANKMENT COMPACTION, VOLUME OF REUSED STRIPPINGS FROM CLEARING AND GRUBBING, AND PORT OF KALAMA DREDGE SAND, VOLUME DOES NOT INCLUDE TOPSOIL OR TRENCH SPOILS.

GENERAL EROSION CONTROL NOTE:
CITY OF LA CENTER STANDARD PLANS FOR STRAW WATTLES BARRIER (ER-7) AND TEMPORARY SEDIMENT POND (ER-9) ARE INCLUDED FOR REFERENCE ON SHEET C204. DEPENDANT ON WEATHER CONDITIONS, THESE MAY BE REQUIRED FOR USE TO MEET REQUIREMENTS OF THE CONSTRUCTION STORMWATER GENERAL PERMIT FOR THIS PROJECT.

CONTAMINATED SOILS NOTE:
APPROXIMATE LOCATION OF CONTAMINATED SOIL REMOVAL CONTAINING DIELDREN (SEE REMEDIAL ACTION WORK PLAN [RAWP] FOR LOCATIONS). PRIOR TO WORK IN THESE AREAS (INCLUDING BUT NOT LIMITED TO CLEARING, GRUBBING AND UTILITY INSTALLATION), CONTAMINATED SOILS SHALL BE REMOVED ACCORDING TO THE RAWP INCLUDING EROSION CONTROL PROTECTION AT EACH SOIL REMOVAL SITE. CONTRACTOR SHALL PREVENT CROSS-CONTAMINATION OF CLEAN SOILS WITH REMOVED CONTAMINATED SOILS. NO SITE IMPROVEMENTS MAY OCCUR IN THESE LOCATIONS UNTIL CONTAMINATED SOILS HAVE BEEN REMOVED AND REMOVAL VERIFIED. AFTER REMOVAL OF CONTAMINATED SOILS, IF SHEENS OR SMELLS ARE IDENTIFIED IN THE VICINITY OF PREVIOUSLY REMEDIATED SOILS, CONTRACTOR TO STOP WORK IMMEDIATELY AND FOLLOW PROTOCOLS NOTED IN THE RAWP FOR THE PROJECT. IF SOILS ARE FOUND TO CONTAIN AMINANTS, IMMEDIATELY CONTACT CAROL SERDAR WITH THE DEPARTMENT OF ECOLOGY (CSER461@ECY.WA.GOV, 360.742.9751) FOR ADDITIONAL GUIDANCE.



AINW SHALL FLAG THE ARCHEOLOGICAL AREA PRIOR TO ANY LAND DISTURBING ACTIVITY COMMENCES WITHIN 50' OF THIS ARCHEOLOGICAL AREA. CONTRACTOR TO CONTACT AND HAVE FLAGGING SCHEDULED. SEE LANDSCAPE PLANS AND TYPICAL SECTION SHEET C301 FOR ADDITIONAL PROTECTION AND CAPPING REQUIREMENTS.

7 TREES WITHIN ARCHEOLOGICAL AREA SHALL BE CUT TO 6" FROM EG (TYP.). TREE STUMP SHALL NOT BE GROUND OR REMOVED. NO EXCAVATION OR STRIPPING SHALL OCCUR WITHIN THIS AREA.

7 TREES WITHIN ARCHEOLOGICAL AREA SHALL BE CUT TO 6" FROM EG (TYP.). TREE STUMP SHALL NOT BE GROUND OR REMOVED. NO EXCAVATION OR STRIPPING SHALL OCCUR WITHIN THIS AREA.

CONSTRUCT WHEEL WASH PER CITY OF LA CENTER STD. DETAIL ER-5 (SEE SHEET C204) IF SIGNIFICANT SEDIMENT TRACKING IS FOUND FROM ON SITE TO EXISTING ROADWAY.

WETLAND BOUNDARY - TO BE REMOVED

WETLAND BOUNDARY - TO BE RETAINED

RIPARIAN BUFFER

FABRIC SHALL NOT BE INSTALLED WITHIN 75-FT. RIPARIAN BUFFER

GRADE BREAK (TYP.)
OUTFALL PIPES SHALL HAVE 6" SOIL COVER AND AREA BETWEEN PIPES TO MATCH COVER ELEVATIONS. GRADE 4:1 OUTSIDE OF PIPE ZONE AND DOWN TO 2:1 AT RIPARIAN BUFFER.

PROPOSED FLOW ARROW (TYP)

WETLAND BOUNDARY - TO BE REMOVED

WETLAND BOUNDARY - TO BE RETAINED

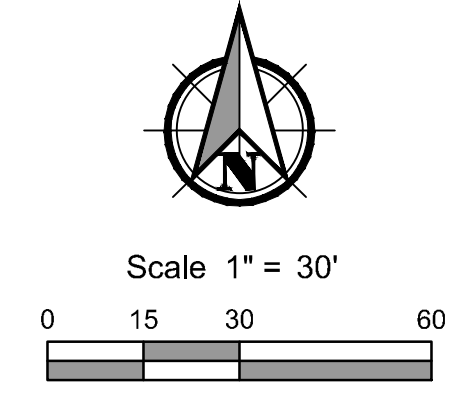
EXISTING DITCH

AREA OF CONTAMINATED SOILS. SEE CONTAMINATED SOILS NOTE.

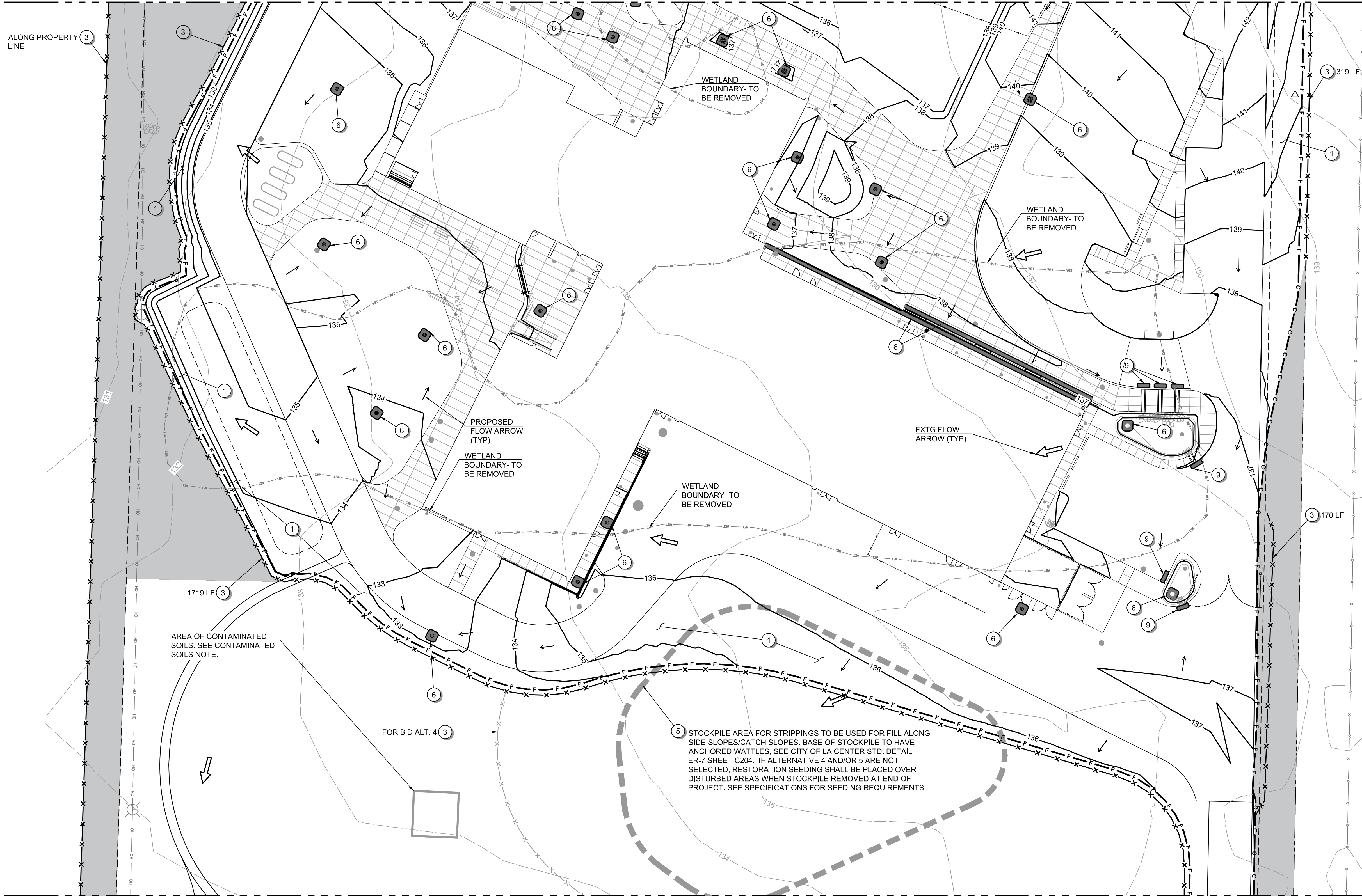
MATCH LINE - SEE SHEET C202

GENERAL EROSION CONTROL NOTE:
CITY OF LA CENTER STANDARD PLANS FOR STRAW WATTLES BARRIER (ER-7) AND TEMPORARY SEDIMENT POND (ER-9) ARE INCLUDED FOR REFERENCE ON SHEET C204. DEPENDANT ON WEATHER CONDITIONS, THESE MAY BE REQUIRED FOR USE TO MEET REQUIREMENTS OF THE CONSTRUCTION STORMWATER GENERAL PERMIT FOR THIS PROJECT.

CONTAMINATED SOILS NOTE:
APPROXIMATE LOCATION OF CONTAMINATED SOIL REMOVAL CONTAINING DIELDRIN (SEE REMEDIAL ACTION WORK PLAN [RAWP] FOR LOCATIONS). PRIOR TO WORK IN THESE AREAS (INCLUDING BUT NOT LIMITED TO CLEARING, GRUBBING AND UTILITY INSTALLATION), CONTAMINATED SOILS SHALL BE REMOVED ACCORDING TO THE RAWP INCLUDING EROSION CONTROL PROTECTION AT EACH SOIL REMOVAL SITE. CONTRACTOR SHALL PREVENT CROSS-CONTAMINATION OF CLEAN SOILS WITH REMOVED CONTAMINATED SOILS. NO SITE IMPROVEMENTS MAY OCCUR IN THESE LOCATIONS UNTIL CONTAMINATED SOILS HAVE BEEN REMOVED AND REMOVAL VERIFIED. AFTER REMOVAL OF CONTAMINATED SOILS, IF SHEENS OR SMELLS ARE IDENTIFIED IN THE VICINITY OF PREVIOUSLY REMEDIATED SOILS, CONTRACTOR TO STOP WORK IMMEDIATELY AND FOLLOW PROTOCOLS NOTED IN THE RAWP FOR THE PROJECT. IF SOILS ARE FOUND TO CONTAIN CONTAMINANTS, IMMEDIATELY CONTACT CAROL SERDAR WITH THE DEPARTMENT OF ECOLOGY (CSER461@ECY.WA.GOV, 360.742.9751) FOR ADDITIONAL GUIDANCE.



MATCH LINE - SEE SHEET C201



MATCH LINE - SEE SHEET C203

- GENERAL NOTES**
- SEE CITY OF LA CENTER STANDARD DETAILS ER-1A AND ER-1B FOR GENERAL EROSION CONTROL NOTES, SHEET C204.
 - APPROVAL OF THIS EROSION/SEDIMENTATION CONTROL (ESC) PLAN DOES NOT CONSTITUTE AN APPROVAL OF PERMANENT ROAD IMPROVEMENTS OR DRAINAGE DESIGN (E.G., SIZE AND LOCATION OF ROADS, PIPES, RESTRICTORS, CHANNELS, RETENTION FACILITIES, UTILITIES, ETC.)
 - THE IMPLEMENTATION OF THESE ESC PLANS AND THE CONSTRUCTION, MAINTENANCE, REPLACEMENT, AND UPGRADING OF THESE ESC FACILITIES IS THE RESPONSIBILITY OF THE APPLICANT/CONTRACTOR UNTIL ALL CONSTRUCTION IS COMPLETED AND APPROVED AND VEGETATION/LANDSCAPING IS ESTABLISHED.
 - THE BOUNDARIES OF THE CLEARING LIMITS SHOWN ON THIS PLAN (DENOTED BY CUT / FILL BOUNDARY LINES) SHALL BE CLEARLY FLAGGED IN THE FIELD PRIOR TO CONSTRUCTION. DURING THE CONSTRUCTION PERIOD, NO DISTURBANCE BEYOND THE FLAGGED CLEARING LIMITS SHALL BE PERMITTED. THE FLAGGING SHALL BE MAINTAINED BY THE APPLICANT/CONTRACTOR FOR THE DURATION OF CONSTRUCTION.
 - THE ESC FACILITIES SHOWN ON THIS PLAN MUST BE CONSTRUCTED IN CONJUNCTION WITH ALL CLEARING AND GRADING ACTIVITIES AND IN SUCH A MANNER AS TO ENSURE THAT SEDIMENT AND SEDIMENT-LADEN WATER DO NOT ENTER THE DRAINAGE SYSTEM OR ROADWAYS, NOR VIOLATE APPLICABLE WATER STANDARDS.
 - THE ESC FACILITIES SHOWN ON THIS PLAN ARE THE MINIMUM REQUIREMENTS FOR ANTICIPATED SITE CONDITIONS. DURING THE CONSTRUCTION PERIOD, THESE ESC FACILITIES SHALL BE UPGRADED AS NEEDED FOR UNEXPECTED STORM EVENTS AND TO ENSURE THAT SEDIMENT AND SEDIMENT-LADEN WATER DO NOT LEAVE THE SITE.
 - THE ESC FACILITIES SHALL BE INSPECTED DAILY BY THE APPLICANT/CONTRACTOR AND MAINTAINED AS NECESSARY TO ENSURE THEIR CONTINUED FUNCTIONING.
 - THE ESC FACILITIES ON INACTIVE SITES SHALL BE INSPECTED AND MAINTAINED A MINIMUM OF ONCE A MONTH OR WITHIN THE 48 HOURS FOLLOWING A STORM EVENT.
 - AT NO TIME SHALL MORE THAN ONE FOOT OF SEDIMENT BE ALLOWED TO ACCUMULATE WITHIN A TRAPPED CATCH BASIN. ALL CATCH BASINS AND CONVEYANCE LINES SHALL BE CLEANED PRIOR TO PAVING. THE CLEANING OPERATION SHALL NOT FLUSH SEDIMENT-LADEN WATER INTO THE DOWNSTREAM SYSTEM.
 - A STABILIZED CONSTRUCTION ENTRANCE SHALL BE INSTALLED AT THE BEGINNING OF CONSTRUCTION AND MAINTAINED FOR THE DURATION OF THE PROJECT. ADDITIONAL MEASURES MAY BE REQUIRED TO ENSURE THAT ALL PAVED AREAS ARE KEPT CLEAN FOR THE DURATION OF THE PROJECT.
 - CONTRACTOR SHALL COMPLY WITH CONDITIONS OF APPROVAL WITH THE NPDES CONSTRUCTION STORMWATER GENERAL PERMIT (WAR308200) AND THE SWPPP.

- EROSION CONTROL NOTES :**
- SEEDING ON CUT AND FILL SLOPES AND DISTURBED AREAS. SEE LANDSCAPE SHEETS.
 - STANDARD CONSTRUCTION ENTRANCE PER CITY OF LA CENTER STD. DETAIL ER-2 (MIN. 100 FT), SEE SHEET C204.
 - FILTER FABRIC FENCE PER CITY OF LA CENTER STD. DETAIL ER-3. SEE SHEET C204.
 - HIGH VISIBILITY ORANGE FILTER FABRIC FENCE PER CITY OF LA CENTER STD. DETAIL ER-3, SEE SHEET C204.
 - PLACE PLASTIC SHEETING OVER STOCKPILE PER CITY OF LA CENTER STD. DETAIL ER-6, SEE SHEET C204.
 - STORM DRAIN INLET PROTECTION PER WSDOT STD. PLAN I-40.10 AND I-40.20, SEE SHEET C205.
 - REMOVE EXISTING TREES AND TREES NOT SURVEYED (TREES LESS THAN 6" DIAMETER AT BREAST HEIGHT WERE NOT SURVEYED).
 - POINT OF COMPLIANCE.
 - BIO-FILTER BAGS PER STANDARD DETAIL E3C, SEE SHEET C205.

LEGEND:

EXISTING CONTOUR	--- 410 ---
PROPOSED CONTOUR	—— 410 ——
FILTER FABRIC FENCE	-x-x-x-x-x-
HIGH VISIBILITY ORANGE FILTER FABRIC FENCE	-o-o-o-o-o-
STANDARD CONSTRUCTION ENTRANCE	[Symbol]
STOCKPILE AREA	[Symbol]
INLET PROTECTION	[Symbol]
BIO-FILTER BAG	[Symbol]
CLEARING AND GRADING LIMITS (CUT / FILL)	-C / F-
ADD'L CLEARING / GRUBBING OUTSIDE CUT / FILL LIMITS	[Symbol]

PERMIT / BID SET

PBS Engineering and Environmental Inc. 601 Vancouver, WA 98660 360.685.3488 pbse.com



LA CENTER SCHOOL DISTRICT
LA CENTER NEW MIDDLE SCHOOL
2001 NE LOCKWOOD CREEK ROAD, LA CENTER, WA 98629



NAC ARCHITECTURE
nacarchitecture.com
2025 FIRST AVENUE | SUITE 300
SEATTLE WA 98121
P:206.441.4522

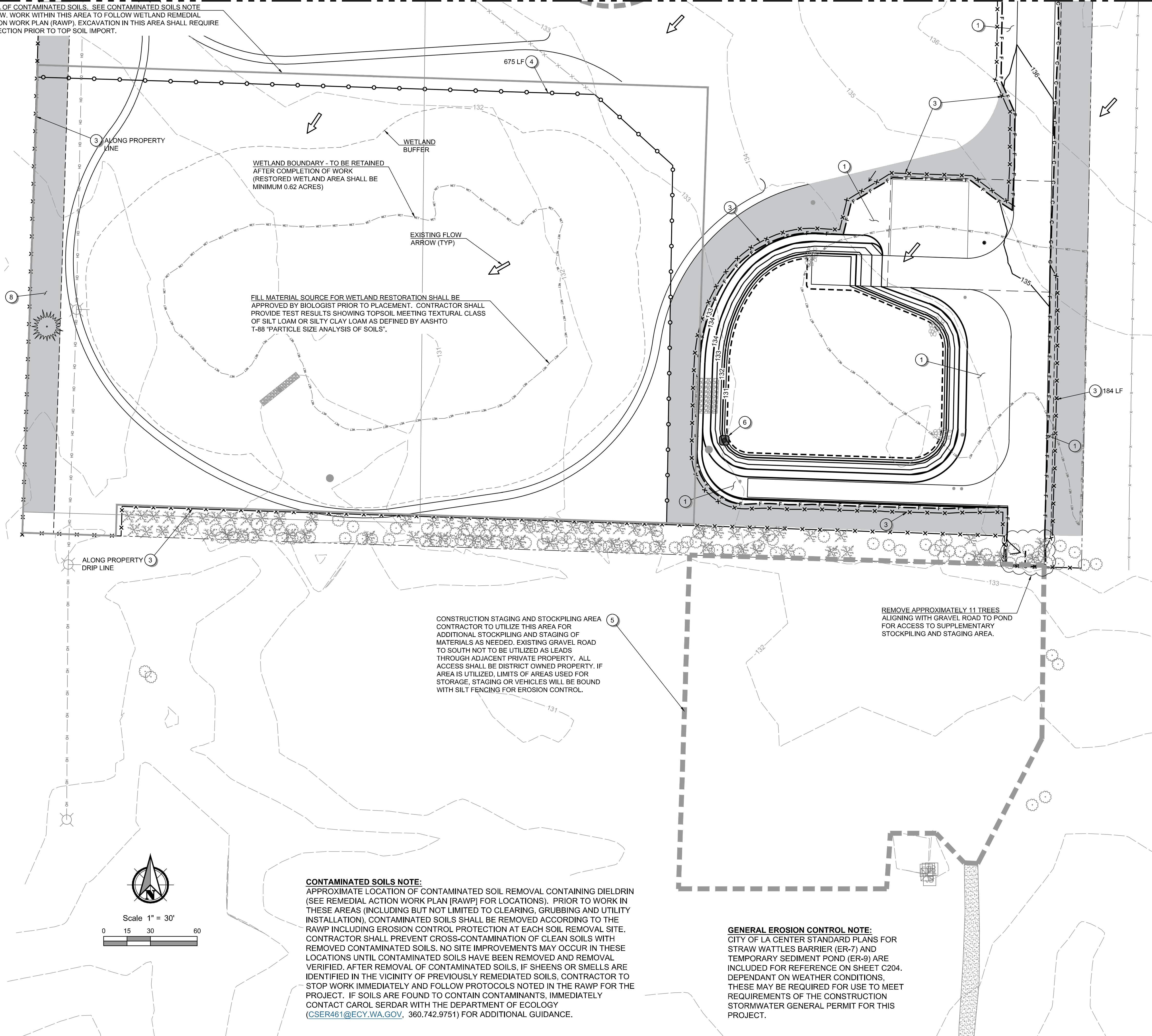
NAC NO: 121-18009
DRAWN: JAB/JRM
CHECKED: EAP
DATE: 10-8-2019

EROSION CONTROL PLANS

CD SUBMITTAL
C202

Filename: I:\Projects\1710001712821712822-000\Civil\CAD\Working\Sheets\171282_C201-205.dwg Layout Tab: C202 User: John A. Buehler CAD Plot Date/Time: 10/9/2019 10:59:33 AM

AREA OF CONTAMINATED SOILS. SEE CONTAMINATED SOILS NOTE BELOW. WORK WITHIN THIS AREA TO FOLLOW WETLAND REMEDIAL ACTION WORK PLAN (RAWP). EXCAVATION IN THIS AREA SHALL REQUIRE INSPECTION PRIOR TO TOP SOIL IMPORT.



WETLAND BOUNDARY - TO BE RETAINED AFTER COMPLETION OF WORK (RESTORED WETLAND AREA SHALL BE MINIMUM 0.62 ACRES)

EXISTING FLOW ARROW (TYP)

FILL MATERIAL SOURCE FOR WETLAND RESTORATION SHALL BE APPROVED BY BIOLOGIST PRIOR TO PLACEMENT. CONTRACTOR SHALL PROVIDE TEST RESULTS SHOWING TOPSOIL MEETING TEXTURAL CLASS OF SILT LOAM OR SILTY CLAY LOAM AS DEFINED BY AASHTO T-88 "PARTICLE SIZE ANALYSIS OF SOILS".

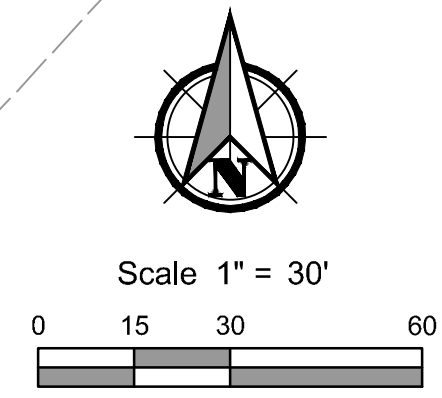
ALONG PROPERTY DRIP LINE

CONSTRUCTION STAGING AND STOCKPILING AREA CONTRACTOR TO UTILIZE THIS AREA FOR ADDITIONAL STOCKPILING AND STAGING OF MATERIALS AS NEEDED. EXISTING GRAVEL ROAD TO SOUTH NOT TO BE UTILIZED AS LEADS THROUGH ADJACENT PRIVATE PROPERTY. ALL ACCESS SHALL BE DISTRICT OWNED PROPERTY. IF AREA IS UTILIZED, LIMITS OF AREAS USED FOR STORAGE, STAGING OR VEHICLES WILL BE BOUND WITH SILT FENCING FOR EROSION CONTROL.

REMOVE APPROXIMATELY 11 TREES ALIGNING WITH GRAVEL ROAD TO POND FOR ACCESS TO SUPPLEMENTARY STOCKPILING AND STAGING AREA.

CONTAMINATED SOILS NOTE:
APPROXIMATE LOCATION OF CONTAMINATED SOIL REMOVAL CONTAINING DIELDRIN (SEE REMEDIAL ACTION WORK PLAN [RAWP] FOR LOCATIONS). PRIOR TO WORK IN THESE AREAS (INCLUDING BUT NOT LIMITED TO CLEARING, GRUBBING AND UTILITY INSTALLATION), CONTAMINATED SOILS SHALL BE REMOVED ACCORDING TO THE RAWP INCLUDING EROSION CONTROL PROTECTION AT EACH SOIL REMOVAL SITE. CONTRACTOR SHALL PREVENT CROSS-CONTAMINATION OF CLEAN SOILS WITH REMOVED CONTAMINATED SOILS. NO SITE IMPROVEMENTS MAY OCCUR IN THESE LOCATIONS UNTIL CONTAMINATED SOILS HAVE BEEN REMOVED AND REMOVAL VERIFIED. AFTER REMOVAL OF CONTAMINATED SOILS, IF SHEENS OR SMELLS ARE IDENTIFIED IN THE VICINITY OF PREVIOUSLY REMEDIATED SOILS, CONTRACTOR TO STOP WORK IMMEDIATELY AND FOLLOW PROTOCOLS NOTED IN THE RAWP FOR THE PROJECT. IF SOILS ARE FOUND TO CONTAIN CONTAMINANTS, IMMEDIATELY CONTACT CAROL SERDAR WITH THE DEPARTMENT OF ECOLOGY (CSER461@ECY.WA.GOV, 360.742.9751) FOR ADDITIONAL GUIDANCE.

GENERAL EROSION CONTROL NOTE:
CITY OF LA CENTER STANDARD PLANS FOR STRAW WATTLES BARRIER (ER-7) AND TEMPORARY SEDIMENT POND (ER-9) ARE INCLUDED FOR REFERENCE ON SHEET C204. DEPENDANT ON WEATHER CONDITIONS, THESE MAY BE REQUIRED FOR USE TO MEET REQUIREMENTS OF THE CONSTRUCTION STORMWATER GENERAL PERMIT FOR THIS PROJECT.



- GENERAL NOTES**
- SEE CITY OF LA CENTER STANDARD DETAILS ER-1A AND ER-1B FOR GENERAL EROSION CONTROL NOTES, SHEET C204.
 - APPROVAL OF THIS EROSION/SEDIMENTATION CONTROL (ESC) PLAN DOES NOT CONSTITUTE AN APPROVAL OF PERMANENT ROAD IMPROVEMENTS OR DRAINAGE DESIGN (E.G., SIZE AND LOCATION OF ROADS, PIPES, RESTRICTORS, CHANNELS, RETENTION FACILITIES, UTILITIES, ETC.)
 - THE IMPLEMENTATION OF THESE ESC PLANS AND THE CONSTRUCTION, MAINTENANCE, REPLACEMENT, AND UPGRADING OF THESE ESC FACILITIES IS THE RESPONSIBILITY OF THE APPLICANT/CONTRACTOR UNTIL ALL CONSTRUCTION IS COMPLETED AND APPROVED AND VEGETATION/LANDSCAPING IS ESTABLISHED.
 - THE BOUNDARIES OF THE CLEARING LIMITS SHOWN ON THIS PLAN (DENOTED BY CUT / FILL BOUNDARY LINES) SHALL BE CLEARLY FLAGGED IN THE FIELD PRIOR TO CONSTRUCTION. DURING THE CONSTRUCTION PERIOD, NO DISTURBANCE BEYOND THE FLAGGED CLEARING LIMITS SHALL BE PERMITTED. THE FLAGGING SHALL BE MAINTAINED BY THE APPLICANT/CONTRACTOR FOR THE DURATION OF CONSTRUCTION.
 - THE ESC FACILITIES SHOWN ON THIS PLAN MUST BE CONSTRUCTED IN CONJUNCTION WITH ALL CLEARING AND GRADING ACTIVITIES AND IN SUCH A MANNER AS TO ENSURE THAT SEDIMENT AND SEDIMENT-LADEN WATER DO NOT ENTER THE DRAINAGE SYSTEM OR ROADWAYS, NOR VIOLATE APPLICABLE WATER STANDARDS.
 - THE ESC FACILITIES SHOWN ON THIS PLAN ARE THE MINIMUM REQUIREMENTS FOR ANTICIPATED SITE CONDITIONS. DURING THE CONSTRUCTION PERIOD, THESE ESC FACILITIES SHALL BE UPGRADED AS NEEDED FOR UNEXPECTED STORM EVENTS AND TO ENSURE THAT SEDIMENT AND SEDIMENT-LADEN WATER DO NOT LEAVE THE SITE.
 - THE ESC FACILITIES SHALL BE INSPECTED DAILY BY THE APPLICANT/CONTRACTOR AND MAINTAINED AS NECESSARY TO ENSURE THEIR CONTINUED FUNCTIONING.
 - THE ESC FACILITIES ON INACTIVE SITES SHALL BE INSPECTED AND MAINTAINED A MINIMUM OF ONCE A MONTH OR WITHIN THE 48 HOURS FOLLOWING A STORM EVENT.
 - AT NO TIME SHALL MORE THAN ONE FOOT OF SEDIMENT BE ALLOWED TO ACCUMULATE WITHIN A TRAPPED CATCH BASIN. ALL CATCH BASINS AND CONVEYANCE LINES SHALL BE CLEANED PRIOR TO PAVING. THE CLEANING OPERATION SHALL NOT FLUSH SEDIMENT-LADEN WATER INTO THE DOWNSTREAM SYSTEM.
 - A STABILIZED CONSTRUCTION ENTRANCE SHALL BE INSTALLED AT THE BEGINNING OF CONSTRUCTION AND MAINTAINED FOR THE DURATION OF THE PROJECT. ADDITIONAL MEASURES MAY BE REQUIRED TO ENSURE THAT ALL PAVED AREAS ARE KEPT CLEAN FOR THE DURATION OF THE PROJECT.
 - CONTRACTOR SHALL COMPLY WITH CONDITIONS OF APPROVAL WITH THE NPDES CONSTRUCTION STORMWATER GENERAL PERMIT (WAR308200) AND THE SWPPP.

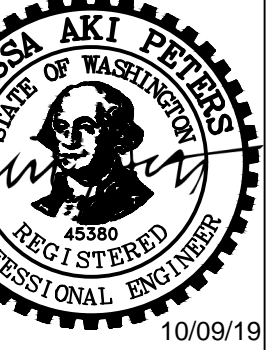
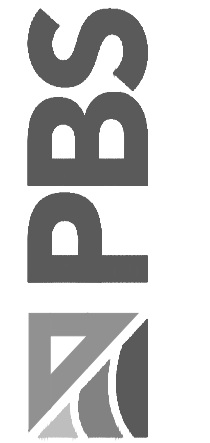
- EROSION CONTROL NOTES :**
- SEEDING ON CUT AND FILL SLOPES AND DISTURBED AREAS. SEE LANDSCAPE SHEETS.
 - STANDARD CONSTRUCTION ENTRANCE PER CITY OF LA CENTER STD. DETAIL ER-2 (MIN. 100 FT), SEE SHEET C204.
 - FILTER FABRIC FENCE PER CITY OF LA CENTER STD. DETAIL ER-3, SEE SHEET C204.
 - HIGH VISIBILITY ORANGE FILTER FABRIC FENCE PER CITY OF LA CENTER STD. DETAIL ER-3, SEE SHEET C204.
 - PLACE PLASTIC SHEETING OVER STOCKPILE PER CITY OF LA CENTER STD. DETAIL ER-6, SEE SHEET C204.
 - STORM DRAIN INLET PROTECTION PER WSDOT STD. PLAN I-40.10 AND I-40.20, SEE SHEET C205.
 - REMOVE EXISTING TREES AND TREES NOT SURVEYED (TREES LESS THAN 6" DIAMETER AT BREST HEIGHT WERE NOT SURVEYED).
 - POINT OF COMPLIANCE.
 - BIO-FILTER BAGS PER STANDARD DETAIL E3C, SEE SHEET C205.

LEGEND:

EXISTING CONTOUR	--- 410 ---
PROPOSED CONTOUR	— 410 —
FILTER FABRIC FENCE	-x-x-x-x-x-
HIGH VISIBILITY ORANGE FILTER FABRIC FENCE	-o-o-o-o-o-
STANDARD CONSTRUCTION ENTRANCE	
STOCKPILE AREA	--- 410 ---
INLET PROTECTION	
BIO-FILTER BAG	
CLEARING AND GRADING LIMITS (CUT / FILL)	- C / F -
ADD'L CLEARING / GRUBBING OUTSIDE CUT / FILL LIMITS	

PERMIT / BID SET

PBS Engineering and Environmental Inc. 601 Vancouver, WA 98660 360.685.3488 pbse.com



LA CENTER SCHOOL DISTRICT
LA CENTER NEW MIDDLE SCHOOL
2001 NE LOCKWOOD CREEK ROAD, LA CENTER, WA 98629



NAC
ARCHITECTURE
nacarchitecture.com
2025 FIRST AVENUE | SUITE 300
SEATTLE WA 98121
P.206.441.4522

NAC NO 121-18009
DRAWN JAB/JRM
CHECKED EAP
DATE 10-8-2019

EROSION CONTROL PLANS

CD SUBMITTAL
C203