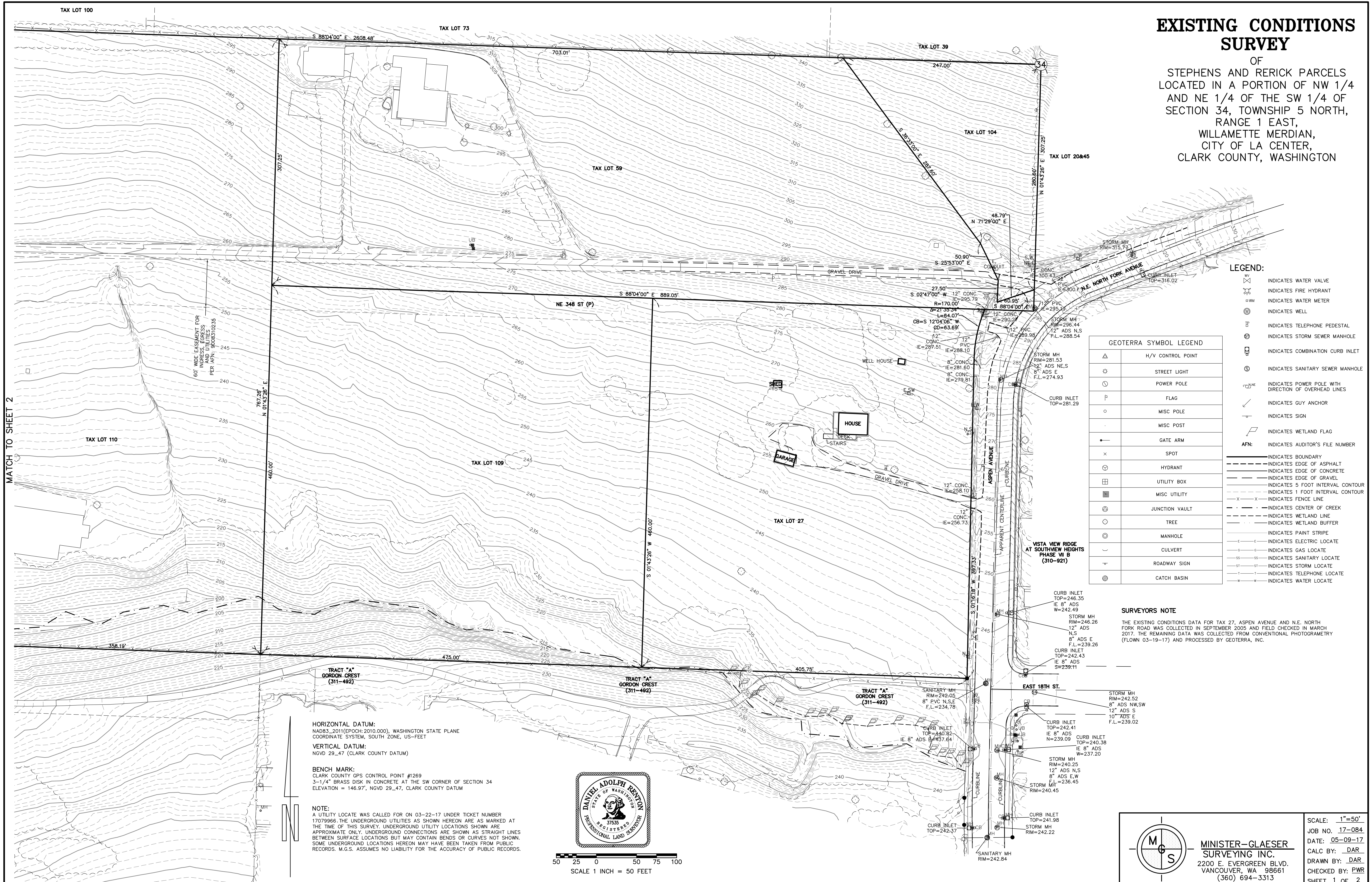


EXISTING CONDITIONS SURVEY

OF
STEPHENS AND RERICK PARCELS
LOCATED IN A PORTION OF NW 1/4
AND NE 1/4 OF THE SW 1/4 OF
SECTION 34, TOWNSHIP 5 NORTH,
RANGE 1 EAST,
WILLAMETTE MERIDIAN,
CITY OF LA CENTER,
CLARK COUNTY, WASHINGTON



- LEGEND:**
- INDICATES WATER VALVE
 - INDICATES FIRE HYDRANT
 - INDICATES WATER METER
 - INDICATES WELL
 - INDICATES TELEPHONE PEDESTAL
 - INDICATES STORM SEWER MANHOLE
 - INDICATES COMBINATION CURB INLET
 - INDICATES SANITARY SEWER MANHOLE
 - INDICATES POWER POLE WITH DIRECTION OF OVERHEAD LINES
 - INDICATES GUY ANCHOR
 - INDICATES SIGN
 - INDICATES WETLAND FLAG
 - INDICATES AUDITOR'S FILE NUMBER
 - INDICATES BOUNDARY
 - INDICATES EDGE OF ASPHALT
 - INDICATES EDGE OF CONCRETE
 - INDICATES EDGE OF GRAVEL
 - INDICATES 5 FOOT INTERVAL CONTOUR
 - INDICATES 1 FOOT INTERVAL CONTOUR
 - INDICATES FENCE LINE
 - INDICATES CENTER OF CREEK
 - INDICATES WETLAND LINE
 - INDICATES WETLAND BUFFER
 - INDICATES PAINT STRIPE
 - INDICATES ELECTRIC LOCATE
 - INDICATES GAS LOCATE
 - INDICATES SANITARY LOCATE
 - INDICATES STORM LOCATE
 - INDICATES TELEPHONE LOCATE
 - INDICATES WATER LOCATE

GEOTERRA SYMBOL LEGEND	
	H/V CONTROL POINT
	STREET LIGHT
	POWER POLE
	FLAG
	MISC POLE
	MISC POST
	GATE ARM
	SPOT
	HYDRANT
	UTILITY BOX
	MISC UTILITY
	JUNCTION VAULT
	TREE
	MANHOLE
	CULVERT
	ROADWAY SIGN
	CATCH BASIN

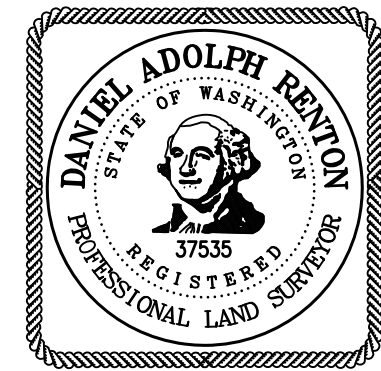
SURVEYORS NOTE
THE EXISTING CONDITIONS DATA FOR TAX 27, ASPEN AVENUE AND N.E. NORTH FORK ROAD WAS COLLECTED IN SEPTEMBER 2005 AND FIELD CHECKED IN MARCH 2017. THE REMAINING DATA WAS COLLECTED FROM CONVENTIONAL PHOTOGRAMMETRY (FLOWN 03-19-17) AND PROCESSED BY GEOTERRA, INC.

HORIZONTAL DATUM:
NAD83_2011(EPOCH: 2010.000), WASHINGTON STATE PLANE
COORDINATE SYSTEM, SOUTH ZONE, US-FEET

VERTICAL DATUM:
NGVD 29_47 (CLARK COUNTY DATUM)

BENCH MARK:
CLARK COUNTY GPS CONTROL POINT #1269
3-1/4" BRASS DISK IN CONCRETE AT THE SW CORNER OF SECTION 34
ELEVATION = 146.97', NGVD 29_47, CLARK COUNTY DATUM

NOTE:
A UTILITY LOCATE WAS CALLED FOR ON 03-22-17 UNDER TICKET NUMBER 17079966. THE UNDERGROUND UTILITIES AS SHOWN HEREON ARE AS MARKED AT THE TIME OF THIS SURVEY. UNDERGROUND UTILITY LOCATIONS SHOWN ARE APPROXIMATE ONLY. UNDERGROUND CONNECTIONS ARE SHOWN AS STRAIGHT LINES BETWEEN SURFACE LOCATIONS BUT MAY CONTAIN BENDS OR CURVES NOT SHOWN. SOME UNDERGROUND LOCATIONS HEREON MAY HAVE BEEN TAKEN FROM PUBLIC RECORDS. M.G.S. ASSUMES NO LIABILITY FOR THE ACCURACY OF PUBLIC RECORDS.



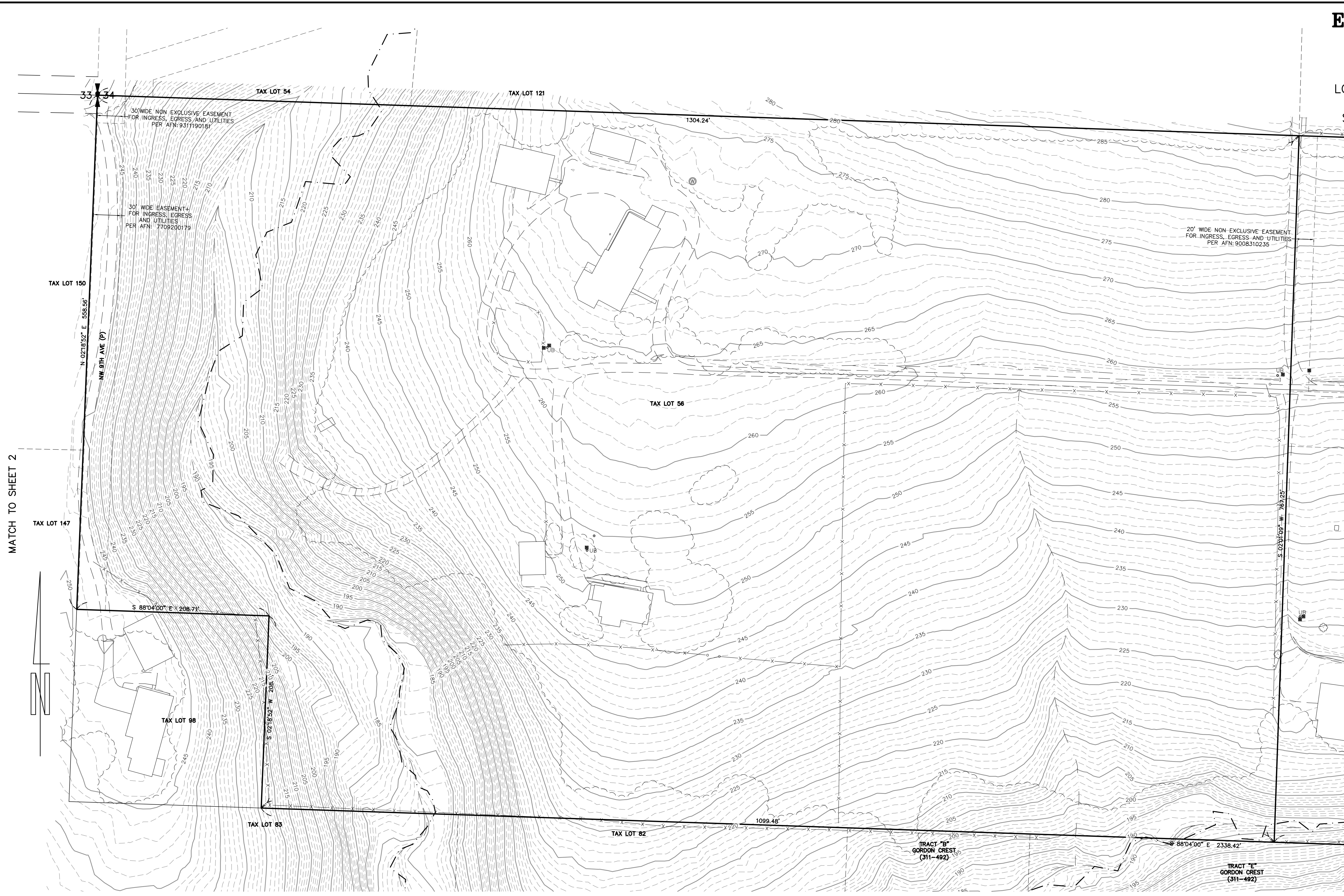
SCALE 1 INCH = 50 FEET

MINISTER-GLAESER SURVEYING INC.
2200 E. EVERGREEN BLVD.
VANCOUVER, WA 98661
(360) 694-3313

SCALE: 1"=50'
JOB NO. 17-084
DATE: 05-09-17
CALC BY: DAR
DRAWN BY: DAR
CHECKED BY: PWR
SHEET 1 OF 2

EXISTING CONDITIONS SURVEY

OF
STEPHENS AND RERICK PARCELS
LOCATED IN A PORTION OF NW 1/4
AND NE 1/4 OF THE SW 1/4 OF
SECTION 34, TOWNSHIP 5 NORTH,
RANGE 1 EAST,
WILLAMETTE MERIDIAN,
CITY OF LA CENTER,
CLARK COUNTY, WASHINGTON



GEOTERRA SYMBOL LEGEND	
	H/V CONTROL POINT
	STREET LIGHT
	POWER POLE
	FLAG
	MISC POLE
	MISC POST
	GATE ARM
	SPOT
	HYDRANT
	UTILITY BOX
	MISC UTILITY
	JUNCTION VAULT
	TREE
	MANHOLE
	CULVERT
	ROADWAY SIGN
	CATCH BASIN

LEGEND:

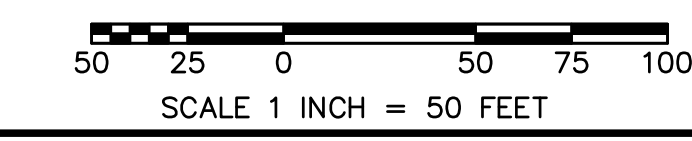
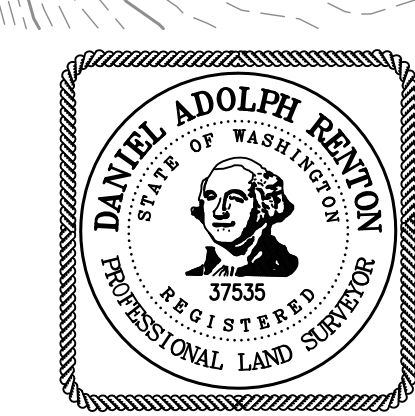
- INDICATES WATER VALVE
- INDICATES FIRE HYDRANT
- INDICATES WATER METER
- INDICATES WELL
- INDICATES TELEPHONE PEDESTAL
- INDICATES STORM SEWER MANHOLE
- INDICATES COMBINATION CURB INLET
- INDICATES SANITARY SEWER MANHOLE
- INDICATES POWER POLE WITH DIRECTION OF OVERHEAD LINES
- INDICATES GUY ANCHOR
- INDICATES SIGN
- INDICATES WETLAND FLAG
- AFN:** INDICATES AUDITOR'S FILE NUMBER
- INDICATES BOUNDARY
- INDICATES EDGE OF ASPHALT
- INDICATES EDGE OF CONCRETE
- INDICATES EDGE OF GRAVEL
- INDICATES 5 FOOT INTERVAL CONTOUR
- INDICATES 1 FOOT INTERVAL CONTOUR
- INDICATES FENCE LINE
- INDICATES CENTER OF CREEK
- INDICATES WETLAND LINE
- INDICATES WETLAND BUFFER
- INDICATES PAINT STRIPE
- INDICATES ELECTRIC LOCATE
- INDICATES GAS LOCATE
- INDICATES SANITARY LOCATE
- INDICATES STORM LOCATE
- INDICATES TELEPHONE LOCATE
- INDICATES WATER LOCATE

HORIZONTAL DATUM:
NAD83_2011(EPOCH:2010.000), WASHINGTON STATE PLANE
COORDINATE SYSTEM, SOUTH ZONE, US-FEET

VERTICAL DATUM:
NGVD 29_47 (CLARK COUNTY DATUM)

BENCH MARK:
CLARK COUNTY GPS CONTROL POINT #1269
3-1/4" BRASS DISK IN CONCRETE AT THE SW CORNER OF SECTION 34
ELEVATION = 146.97', NGVD 29_47, CLARK COUNTY DATUM

NOTE:
A UTILITY LOCATE WAS CALLED FOR ON 03-22-17 UNDER TICKET NUMBER 17079966. THE UNDERGROUND UTILITIES AS SHOWN HEREON ARE AS MARKED AT THE TIME OF THIS SURVEY. UNDERGROUND UTILITY LOCATIONS SHOWN ARE APPROXIMATE ONLY. UNDERGROUND CONNECTIONS ARE SHOWN AS STRAIGHT LINES BETWEEN SURFACE LOCATIONS BUT MAY CONTAIN BENDS OR CURVES NOT SHOWN. SOME UNDERGROUND LOCATIONS HEREON MAY HAVE BEEN TAKEN FROM PUBLIC RECORDS. M.G.S. ASSUMES NO LIABILITY FOR THE ACCURACY OF PUBLIC RECORDS.



SURVEYORS NOTE

THE EXISTING CONDITIONS DATA FOR TAX 27, ASPEN AVENUE AND N.E. NORTH FORK ROAD WAS COLLECTED IN SEPTEMBER 2005 AND FIELD CHECKED IN MARCH 2017. THE REMAINING DATA WAS COLLECTED FROM CONVENTIONAL PHOTOGRAMMETRY (FLOWN 03-19-17) AND PROCESSED BY GEOTERRA, INC.

MINISTER-GLAESER SURVEYING INC.
2200 E. EVERGREEN BLVD.
VANCOUVER, WA 98661
(360) 694-3313

SCALE: 1"=50'
JOB NO. 17-084
DATE: 05-09-17
CALC BY: DAR
DRAWN BY: DAR
CHECKED BY: PWR
SHEET 2 OF 2