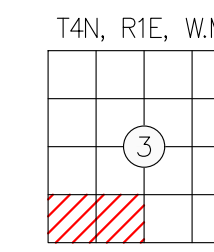
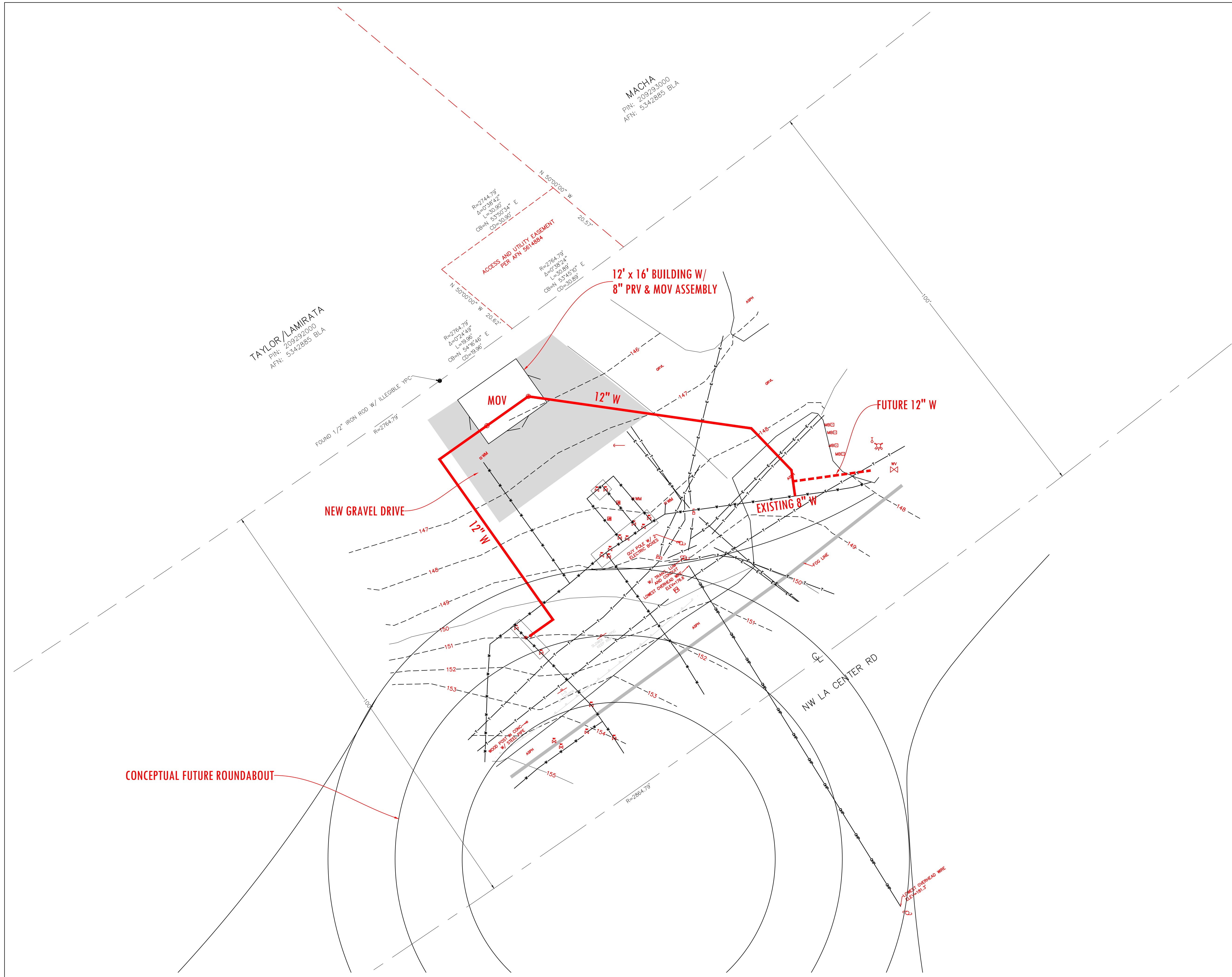


# EXISTING CONDITIONS SURVEY

LOCATED IN A PORTION OF THE SW 1/4 AND THE SW 1/4 OF THE SW 1/4 OF SECTION 3 T. 4 N., R. 1 E., W.M. CLARK COUNTY, WASHINGTON



- LEGEND:**
- INDICATES WATER VALVE
  - INDICATES FIRE HYDRANT
  - INDICATES WATER METER
  - INDICATES WATER BLOW OFF
  - INDICATES POWER POLE
  - INDICATES GUY ANCHOR
  - INDICATES JUNCTION BOX
  - INDICATES ELECTRIC SERVICE BOX
  - INDICATES TELEPHONE VAULT
  - INDICATES TELEPHONE SERVICE BOX
  - INDICATES TELEPHONE MARKER
  - AFN: INDICATES AUDITOR'S FILE NUMBER
  - PIN: INDICATES PARCEL IDENTIFICATION NUMBER
  - ASPH: INDICATES ASPHALT
  - GRV: INDICATES GRAVEL
  - INDICATES PROPERTY BOUNDARY
  - INDICATES EDGE OF ASPHALT
  - INDICATES EDGE OF CONCRETE
  - INDICATES EDGE OF GRAVEL
  - INDICATES 5 FOOT INTERVAL CONTOUR
  - INDICATES 1 FOOT INTERVAL CONTOUR
  - INDICATES PAINT STRIPE
  - INDICATES ELECTRIC LOCATE
  - INDICATES TELEPHONE LOCATE
  - INDICATES WATER LOCATE
  - INDICATES OVER HEAD POWER



**PRELIMINARY REVIEW**



HORIZONTAL DATUM:  
NAD 83(2011)(EPOCH 2010.0000), WASHINGTON STATE PLANE COORDINATE SYSTEM, SOUTH ZONE, US SURVEY FEET.

VERTICAL DATUM:  
NAVD 88(GEOD 18)

NOTE:  
A UTILITY LOCATE WAS CALLED FOR BY OTHERS. THE UNDERGROUND UTILITIES AS SHOWN HEREIN ARE AS MARKED AT THE TIME OF THIS SURVEY. UNDERGROUND UTILITY LOCATIONS SHOWN ARE APPROXIMATE ONLY. UNDERGROUND CONNECTIONS ARE SHOWN AS STRAIGHT LINES BETWEEN SURFACE LOCATIONS BUT MAY CONTAIN BENDS OR CURVES NOT SHOWN. SOME UNDERGROUND LOCATIONS HEREON MAY HAVE BEEN TAKEN FROM PUBLIC RECORDS. M.G.S. ASSUMES NO LIABILITY FOR THE ACCURACY OF PUBLIC RECORDS.

**MINISTER-GLAESER SURVEYING INC.**  
2200 E. EVERGREEN BLVD.  
VANCOUVER, WA 98661  
(360) 694-3313

SCALE: 1"=10'  
JOB NO. 21-220  
DATE: 5/12/2021  
CALC BY: RDH  
DRAWN BY: RDH  
CHECKED BY: DAR  
SHEET 1 OF 1