

Exhibit " "
Legal Description
City of La Center Annexation

A parcel of property in the West half of the Northeast quarter of Section 2, Township 4 North, Range 1 East of the Willamette Meridian, Clark County Washington, more particularly described as follows:

Commencing at the Northeast corner of the West half of the Northeast quarter of said Section 2, being the centerline-centerline intersection of NE 339th Street and NE 24th Avenue;

Thence South 01°48'41" West, for a distance of 1229.55 feet, along the centerline of NE 24th Avenue to the True Point of Beginning;

Thence South 88°11'31" East, for a distance of 20.00 feet, to a point on the East right-of-way line of NE 24th Avenue;

Thence South 01°48'41" West, for a distance of 699.51 feet, along said East right-of-way line;

Thence North 88°46'08" West, for a distance of 40.00 feet, to point on the West right-of-way line of NE 24th Avenue, being on the line monumented by Olson Engineering, Inc. As shown on that Survey recorded in Book 28 at page 24, records of Clark County, Washington;

Thence continuing along said line, North 88°46'08" West, for a distance of 364.03 feet;

Thence continuing along said line, North 88°19'05" West, for a distance of 425.16 feet;

Thence continuing along said line, North 03°32'18" East, for a distance of 183.51 feet;

Thence continuing along said line, North 85°43'02" West, for a distance of 260.48 feet;

Thence continuing along said line, South 01°42'19" West, for a distance of 257.90 feet to a point on the North right-of-way line of NE Lockwood Creek Road;

Thence continuing along said North right-of-way line, North 63°33'40" West, for a distance of 250.81 feet, to a point on said Olson Engineering line;

Thence, leaving said North right-of-way line North 01°35'28" East, for a distance of 392.58 feet along said Olson Engineering line;

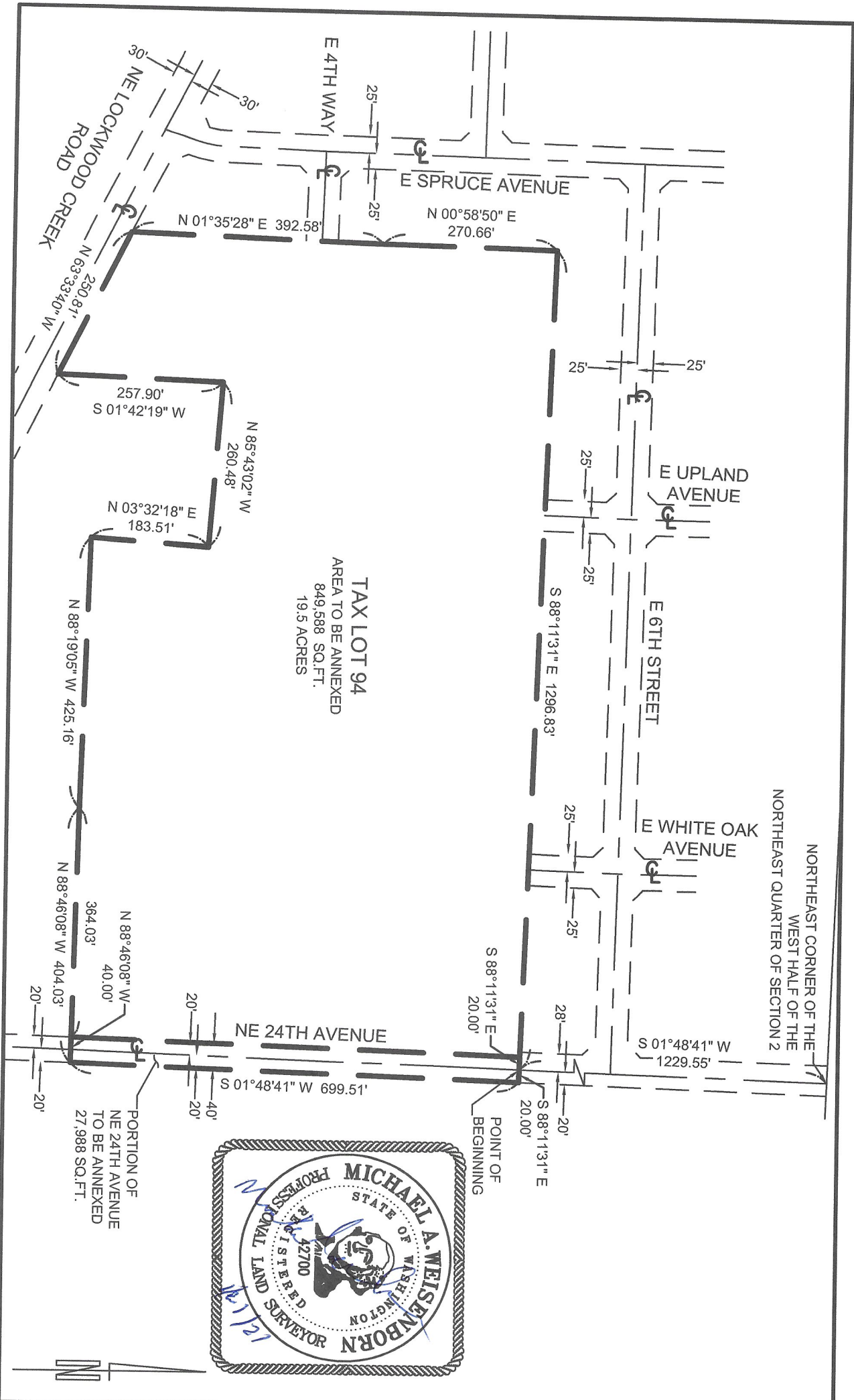
Thence continuing along said line, North 00°58'50" East, for a distance of 270.66 feet;

Thence continuing along said line, South 88°11'31" East, for a distance of 1276.83 feet, to a point on the West right-of-way line of NE 24th Avenue;

Thence South 88°11'31" East, for a distance of 20.00 feet, to the True Point of beginning;

Containing 20.15 acres, more or less.





PLS ENGINEERING

Engineering - Surveying - Planning
 604 W. Evergreen Blvd., Vancouver, WA 98660
 PH: (360) 944-6519 Fax: (360) 944-6539

EXHIBIT " "

FOR PARCEL ANNEXATION
 LOCATED IN THE WEST HALF OF THE
 NORTHEAST 1/4 OF SECTION 2
 T. 4 N., R. 1 E., W.M.
 CLARK COUNTY, WASHINGTON

SCALE: N.T.S.

JOB NO. 3094

DATE: 01-21-2021

DWG FILE: 3094L1.dwg

DRAWN BY: JG