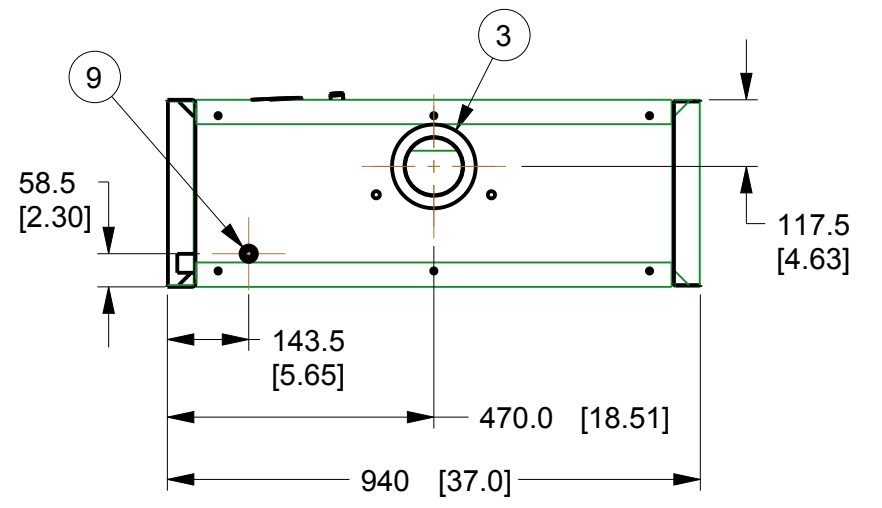
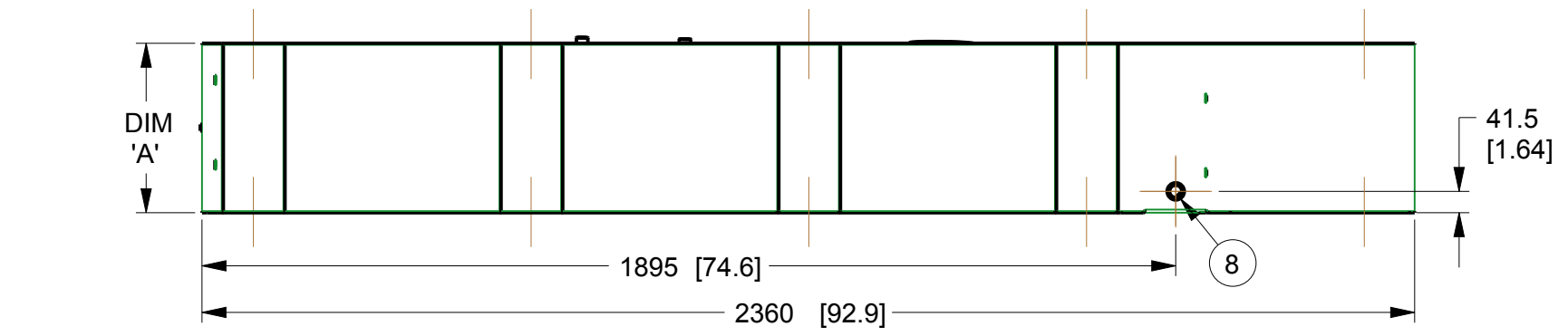
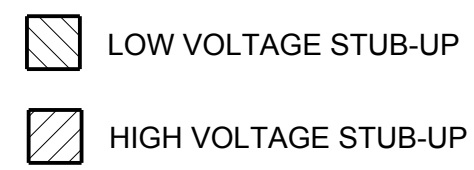


I/N	TANK FITTING	FUNCTION
1	3/8" NPT COUPLING	FUEL SUPPLY
2	3/8" NPT COUPLING	FUEL RETURN
3	4" NPT WELD FLANGE	EMERGENCY VENT
4		FUEL VENT
5	2" NPT WELD FLANGE	FUEL FILL
6	4" NPT WELD FLANGE	EMERGENCY VENT (INNER)
7	2" NPT WELD FLANGE	VENT
8	3/4" NPT COUPLING	DRAIN
9	Ø 22 MM HOLE	LEAK DETECTOR

CAPACITY SHOWN: LITER [GALLONS]  
 WEIGHT SHOWN: KILOGRAMS [POUNDS]  
 LENGTH SHOWN: MM [INCH]  
 UL #142 LISTED  
 ULC-S601 LISTED

NOTES:  
 1. MOUNTING BOLTS OR STUDS TO MOUNT BASETANK TO CONCRETE SHALL BE 5/8-11 GRADE 5. (USE STANDARD SAE TORQUE SPECS)



TANK P/N	OJ18430ST03	OJ18440ST03	OJ18450ST03
DIM 'A'	330 [13]	635 [25]	940 [37]
TOTAL TANK CAPACITY	318 [84]	734 [194]	1154 [305]
USABLE TANK CAPACITY	299 [79]	716 [189]	1134 [300]
DRY WEIGHT (EST)	237 [522]	344 [758]	445 [982]

DRAWING CREATED FROM PRO/ENGINEER 3D FILE. ECO MODIFICATION TO BE APPLIED TO SOLID MODEL ONLY.

**GENERAC**

TITLE: INSTALL B-GROUP BASETANKS

ISSUE DATE: 02/04/11

SIZE: B	CAGE NO: N/A	DWG NO: OJ4211	REV: D
SCALE: 0.075	WT-KG: 240.954	SHEET: 1 of 1	

# INSTALLATION DRAWING

GENERAC POWER SYSTEMS OWNS THE COPYRIGHT OF THIS DRAWING WHICH IS SUPPLIED IN CONFIDENCE AND MUST NOT BE USED FOR ANY PURPOSE OTHER THAN FOR WHICH IT IS SUPPLIED WITHOUT THE EXPRESS WRITTEN CONSENT OF GENERAC POWER SYSTEMS. ©GENERAC POWER SYSTEMS 2013

ELECTRONICALLY APPROVED  
INSIDE WINDCHILL