

**RIVERSIDE ESTATES
SUBDIVISION PHASE 2**
IN A PORTION OF EAST FORK
ESTATES PHASE 2 (311-670)
IN A PORTION OF THE SW 1/4 OF
THE SE 1/4 OF SECTION 33
T. 5 N., R. 1 E., W.M.
CITY OF LA CENTER
CLARK COUNTY, WASHINGTON

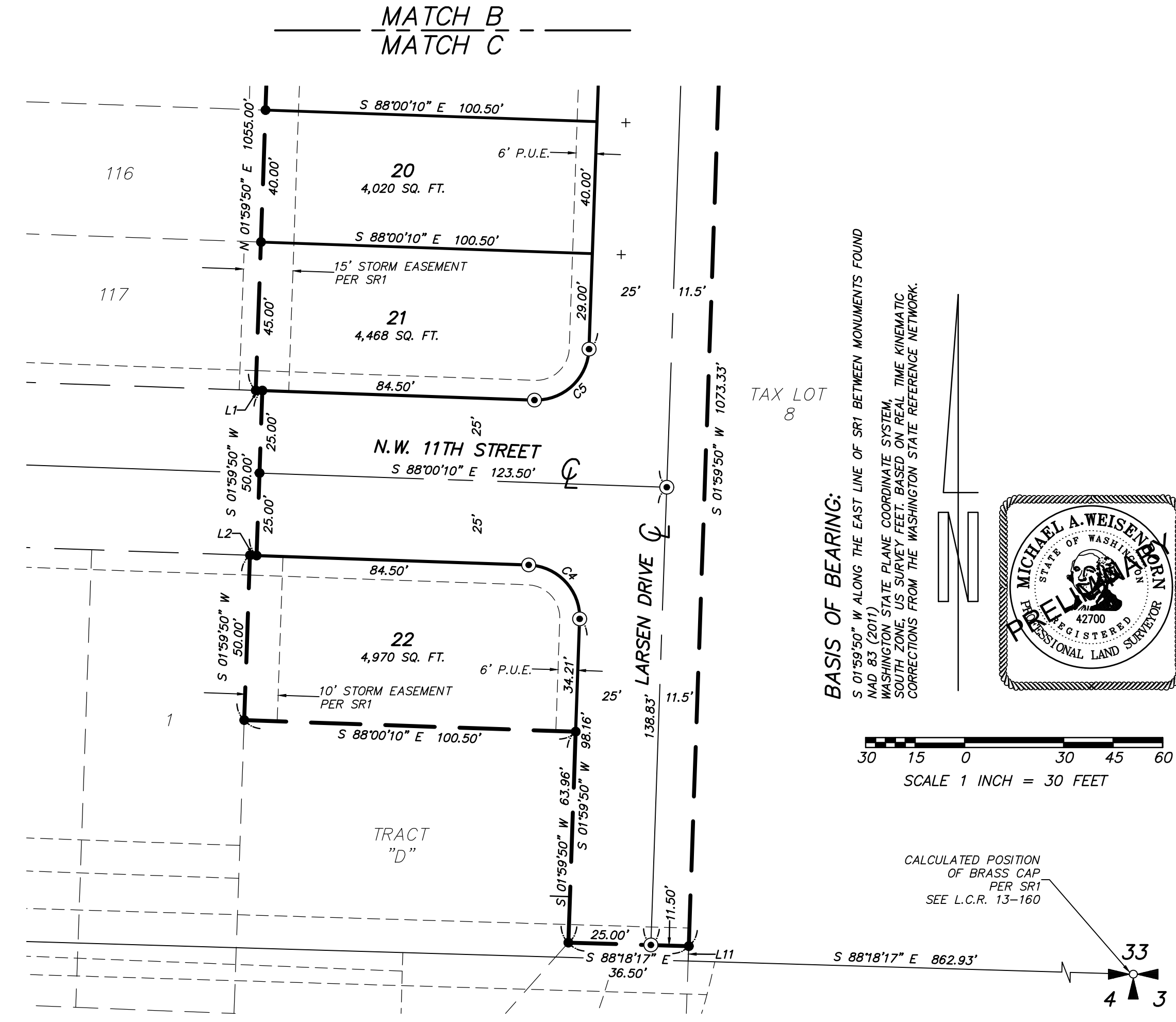
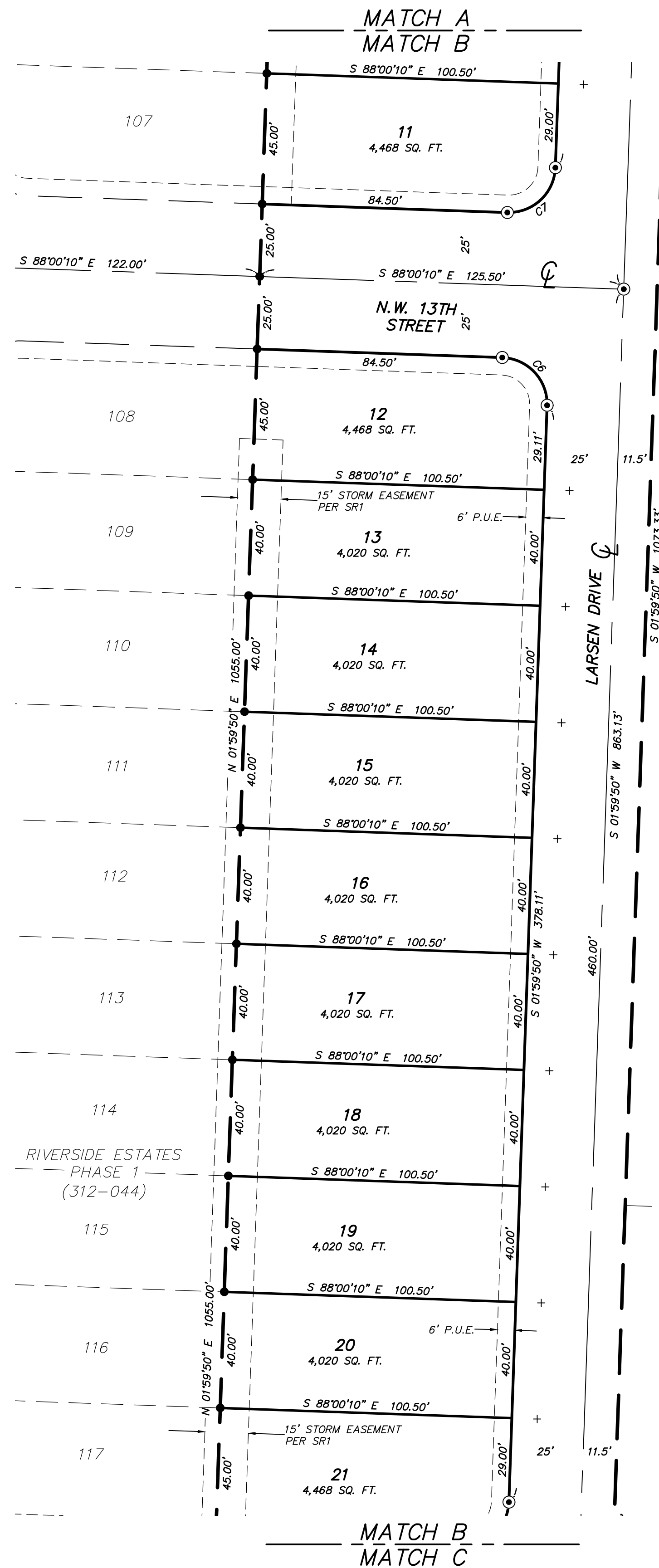
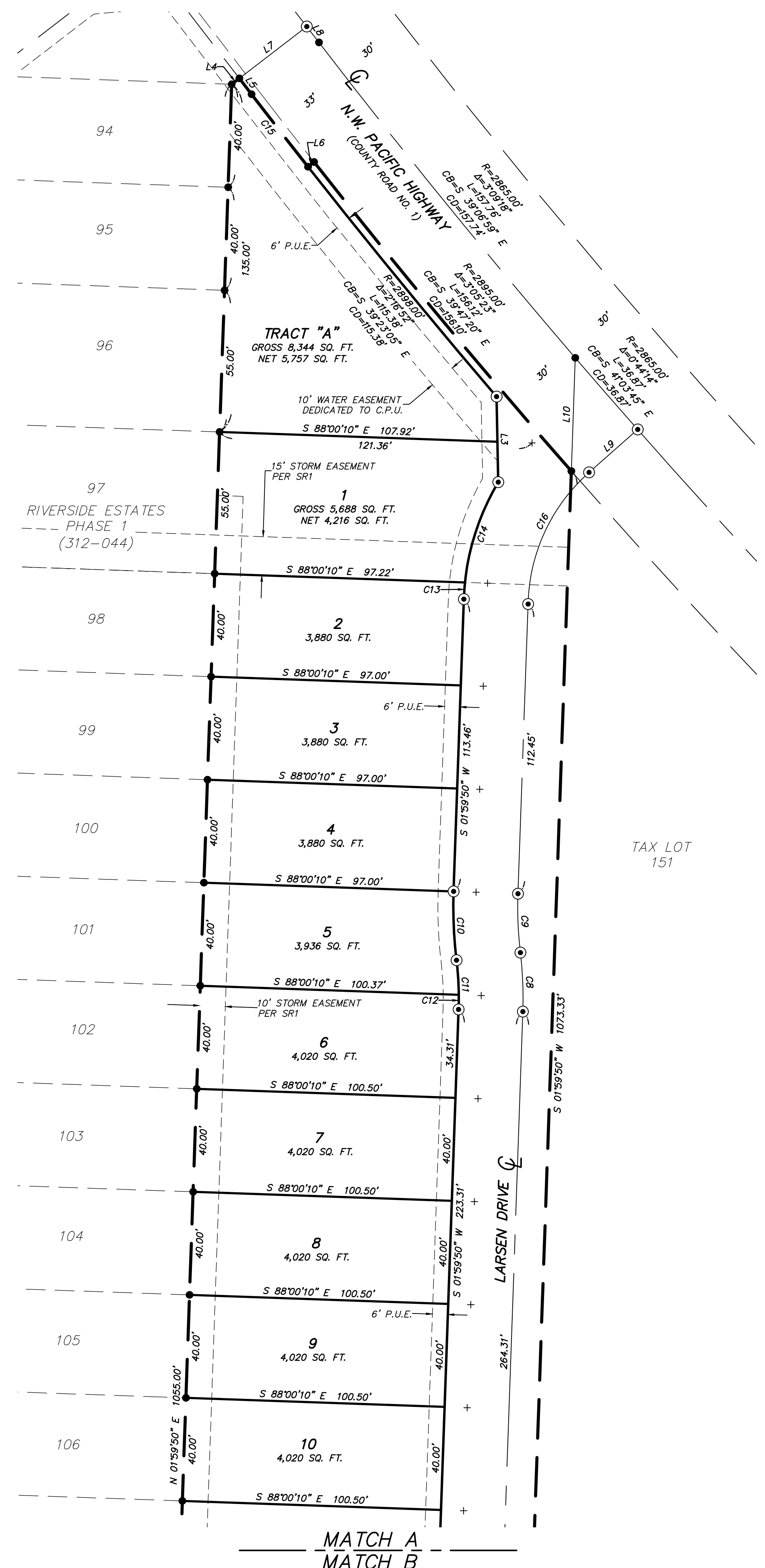
JOB NO.: 2641
DRAWING DATE: 11-22-2021
SHEET 3 OF 3

LINE	BEARING	DISTANCE
L1	N 88°00'10" W	2.00'
L2	S 88°00'10" E	2.00'
L3	N 01°07'41" W	33.23'
L4	N 52°27'40" E	3.73'
L5	N 37°32'20" W	7.77'
L6	S 51°45'22" W	3.00'
L7	N 52°27'40" E	33.00'
L8	S 37°32'20" E	7.77'
L9	N 48°34'34" E	25.18'
L10	N 01°59'50" E	43.98'
L11	S 01°59'50" W	4.51'

CURVE	RADIUS	DELTA	ARC DIST.	CHORD BEARING	CHORD DIST.
C1	16.00'	90°00'00"	25.13'	S 43°00'10" E	22.63'
C2	16.00'	90°00'00"	25.13'	S 46°59'50" W	22.63'
C3	16.00'	90°00'00"	25.13'	N 43°00'10" W	22.63'
C4	16.00'	89°15'28"	24.93'	S 43°22'26" E	22.48'
C5	16.00'	90°00'37"	25.13'	N 46°59'42" E	22.63'
C6	16.00'	89°35'22"	25.02'	N 43°12'29" W	22.55'
C7	16.00'	90°00'00"	25.13'	N 46°59'50" E	22.63'
C8	150.00'	8°45'38"	22.94'	N 02°22'59" W	22.91'
C9	150.00'	8°45'38"	22.94'	S 02°22'59" E	22.91'
C10	175.00'	8°45'38"	26.76'	S 02°22'59" E	26.73'
C11	125.00'	8°45'38"	18.11'	N 02°22'59" W	19.09'
C12	125.00'	2°36'36"	5.69'	N 00°41'32" E	5.69'
C13	95.00'	3°56'48"	6.54'	S 03°58'13" W	6.54'
C14	95.00'	28°50'03"	47.81'	S 16°24'51" W	47.31'
C15	2898.00'	0°42'18"	35.66'	S 37°53'29" E	35.66'
C16	70.00'	46°34'44"	56.91'	S 25°17'12" W	55.35'
C17	16.00'	90°00'00"	25.13'	S 46°59'50" W	22.63'

LEGEND:

- INDICATES FOUND AND HELD 1/2" REBAR WITH YELLOW PLASTIC CAP "PLS 42700" SET IN SR1 (TED AUGUST 08, 2020)
- INDICATES CALCULATED POSITION
- ⊙ INDICATES 1/2" x 24" REBAR WITH YELLOW PLASTIC CAP "PLS 42700" SET
- + INDICATES BRASS SCREW WITH BRASS WASHER INSCRIBED "PLS 42700" AT 8.75" OFFSET UNLESS OTHERWISE NOTED
- SR INDICATES SURVEY REFERENCE
- SQ. FT. INDICATES SQUARE FEET



BASIS OF BEARING:
S 01°59'50" W ALONG THE EAST LINE OF SR1 BETWEEN MONUMENTS FOUND AND 500' STATE PLANE COORDINATE SYSTEM WASHINGTON STATE SURVEY FEET, BASED ON REAL TIME KINEMATIC SOUTH ZONE US SURVEY FEET. CORRECTIONS FROM THE WASHINGTON STATE REFERENCE NETWORK.



SCALE 1 INCH = 30 FEET

CALCULATED POSITION OF BRASS CAP PER SR1 SEE L.C.R. 13-160

PLS ENGINEERING MAKES NO WARRANTIES AS TO MATTERS OF UNWRITTEN TITLE SUCH AS ADVERSE POSSESSION, ACQIESCENCE, ESTOPPEL, ETC. A FIELD TRAVERSE WAS PERFORMED USING A FIVE SECOND TOTAL STATION THE FIELD TRAVERSE MET THE MINIMUM STANDARDS FOR SURVEYS AS DESIGNATED IN WAC 332-130-090. ALL CORNERS NOTED AS FOUND WERE VISITED ON 02-08-19.

PLS ENGINEERING
Engineering - Surveying - Planning
604 W. Evergreen Blvd., Vancouver, WA 98660
PH: (360) 944-6519 Fax: (360) 944-6539