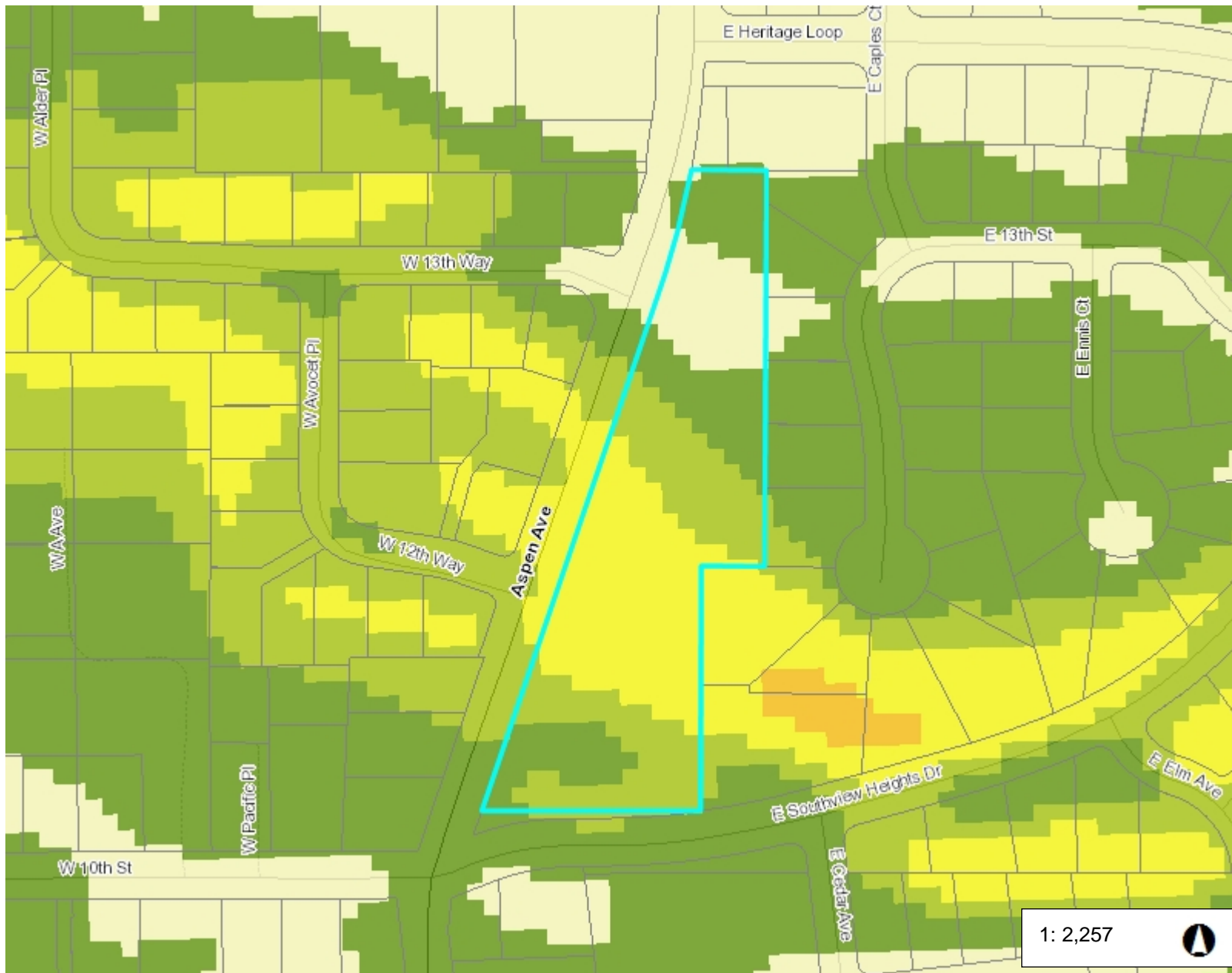
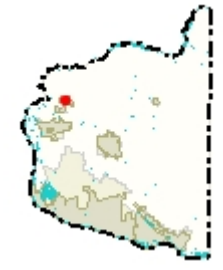




Steep Slopes



Legend

- Taxlots
- Percent Slope**
 - 0-5 percent
 - >5-10 percent
 - >10-15 percent
 - >15-25 percent
 - >25-40 percent
 - >40-80 percent
 - >80 percent
- All Roads**
 - Interstate
 - State Route
 - Arterial
 - Forest Arterial
 - Minor Collector
 - Forest Collector
 - Private or Other
- Cities Boundaries
- Urban Growth Boundaries

Notes:

1: 2,257

376.2 0 188.08 376.2 Feet

WGS_1984_Web_Mercator_Auxiliary_Sphere
Clark County, WA. GIS - <http://gis.clark.wa.gov>

This map was generated by Clark County's "MapsOnline" website. Clark County does not warrant the accuracy, reliability or timeliness of any information on this map, and shall not be held liable for losses caused by using this information.