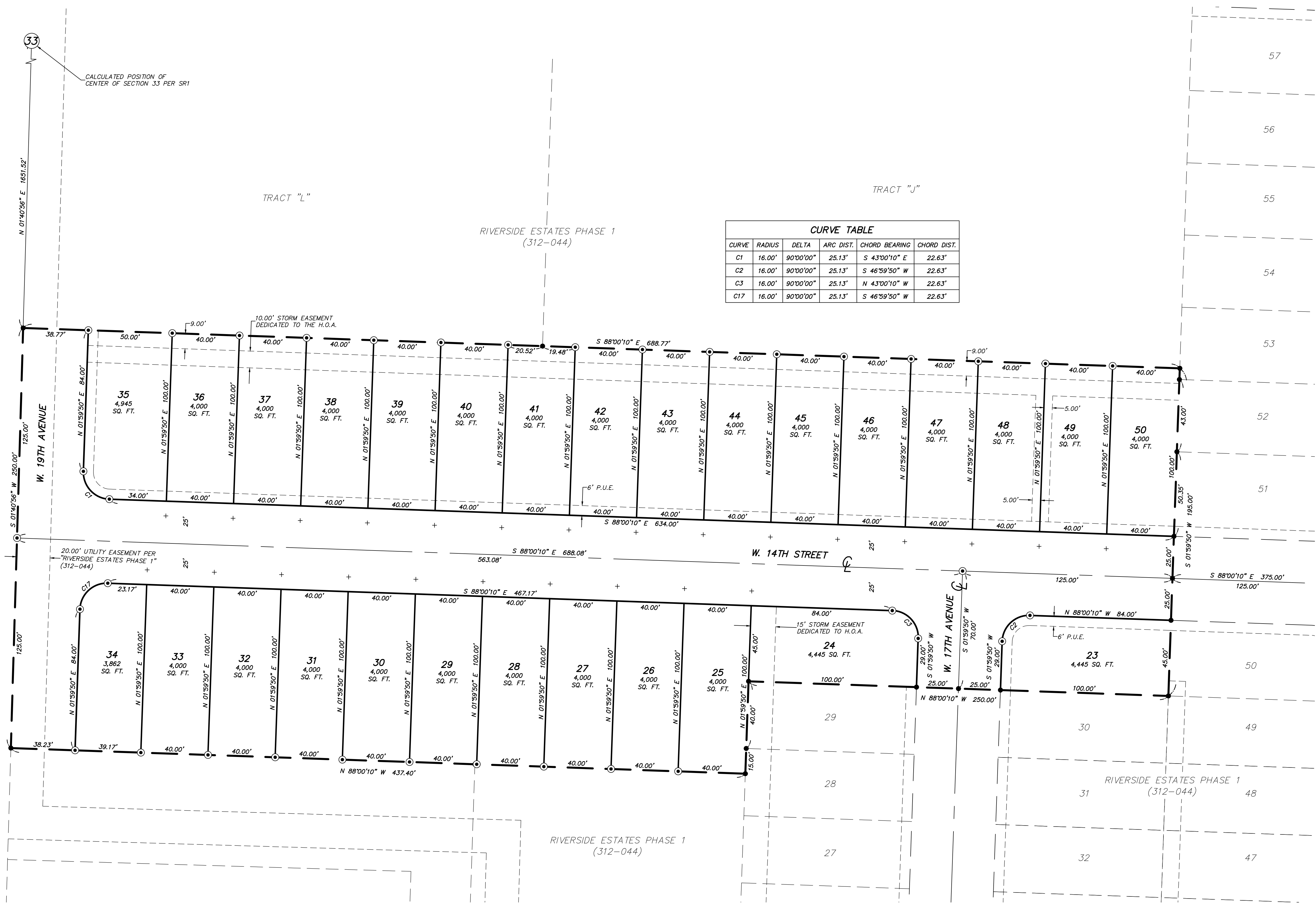


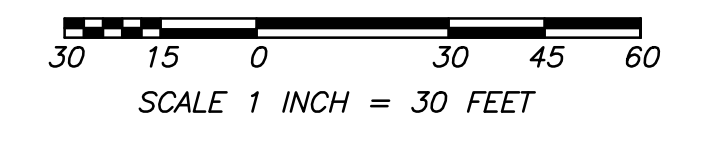
**RIVERSIDE ESTATES
SUBDIVISION PHASE 2**
IN A PORTION OF EAST FORK
ESTATES PHASE 2 (311-670)
IN A PORTION OF THE SW 1/4 OF
THE SE 1/4 OF SECTION 33
T. 5 N., R. 1 E., W.M.
CITY OF LA CENTER
CLARK COUNTY, WASHINGTON
JOB NO.: 2641
DRAWING DATE: 02-24-2022
SHEET 3 OF 3



CURVE TABLE					
CURVE	RADIUS	DELTA	ARC DIST.	CHORD BEARING	CHORD DIST.
C1	16.00'	90°00'00"	25.13'	S 43°00'10" E	22.63'
C2	16.00'	90°00'00"	25.13'	S 46°59'50" W	22.63'
C3	16.00'	90°00'00"	25.13'	N 43°00'10" W	22.63'
C17	16.00'	90°00'00"	25.13'	S 46°59'50" W	22.63'

- LEGEND:**
- INDICATES FOUND AND HELD 1/2" REBAR WITH YELLOW PLASTIC CAP "PLS 42700" SET IN SR1 (TIED AUGUST 08, 2020)
 - INDICATES CALCULATED POSITION
 - ⊙ INDICATES 1/2" x 24" REBAR WITH YELLOW PLASTIC CAP "PLS 42700" SET
 - ⊕ INDICATES BRASS SCREW WITH BRASS WASHER INSCRIBED "PLS 42700" AT 8.75" OFFSET UNLESS OTHERWISE NOTED
 - SR INDICATES SURVEY REFERENCE
 - SQ.FT. INDICATES SQUARE FEET
 - P.U.E. INDICATES PUBLIC UTILITY EASEMENT
 - H.O.A. INDICATES HOME OWNERS ASSOCIATION

BASIS OF BEARING:
S 01°59'50" W ALONG THE EAST LINE OF SRI BETWEEN MONUMENTS FOUND
WASHINGTON STATE PLANE COORDINATE SYSTEM
WASHINGTON STATE SURVEY FEET. BASED ON REAL TIME KINEMATIC
CORRECTIONS FROM THE WASHINGTON STATE REFERENCE NETWORK.



PLS ENGINEERING MAKES NO WARRANTIES AS TO MATTERS OF UNWRITTEN TITLE SUCH AS ADVERSE POSSESSION, ACQUESCENCE, ESTOPPEL, ETC. A FIELD TRAVERSE WAS PERFORMED USING A FIVE SECOND TOTAL STATION THE FIELD TRAVERSE MET THE MINIMUM STANDARDS FOR SURVEYS AS DESIGNATED IN WAC 332-130-090. ALL CORNERS NOTED AS FOUND WERE VISITED ON 02-08-19.

PLS ENGINEERING
Engineering - Surveying - Planning
604 W. Evergreen Blvd., Vancouver, WA 98660
PH: (360) 944-6519 Fax: (360) 944-6539