

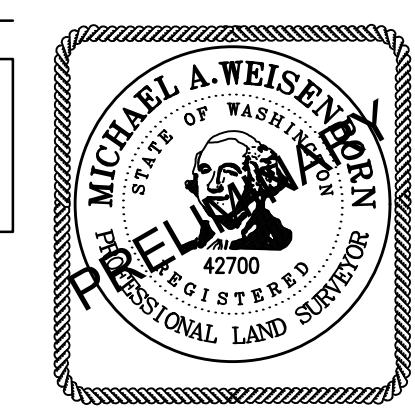
**RIVERSIDE ESTATES  
SUBDIVISION PHASE 2**  
IN A PORTION OF EAST FORK  
ESTATES PHASE 2 (311-670)  
IN A PORTION OF THE SW 1/4 OF  
THE SE 1/4 OF SECTION 33  
T. 5 N., R. 1 E., W.M.  
CITY OF LA CENTER  
CLARK COUNTY, WASHINGTON

JOB NO.: 2641  
DRAWING DATE: 02-24-2022  
SHEET 2 OF 3

LINE TABLE		
LINE	BEARING	DISTANCE
L1	N 88°00'10" W	2.00'
L2	S 88°00'10" E	2.00'
L3	N 01°07'41" W	33.23'
L4	N 52°27'40" E	3.73'
L5	N 37°32'20" W	7.77'
L6	S 51°45'22" W	3.00'
L7	N 52°27'40" E	33.00'
L8	S 37°32'20" E	7.77'
L9	N 48°34'34" E	25.18'
L10	N 01°59'50" E	43.98'
L11	S 01°59'50" W	4.51'

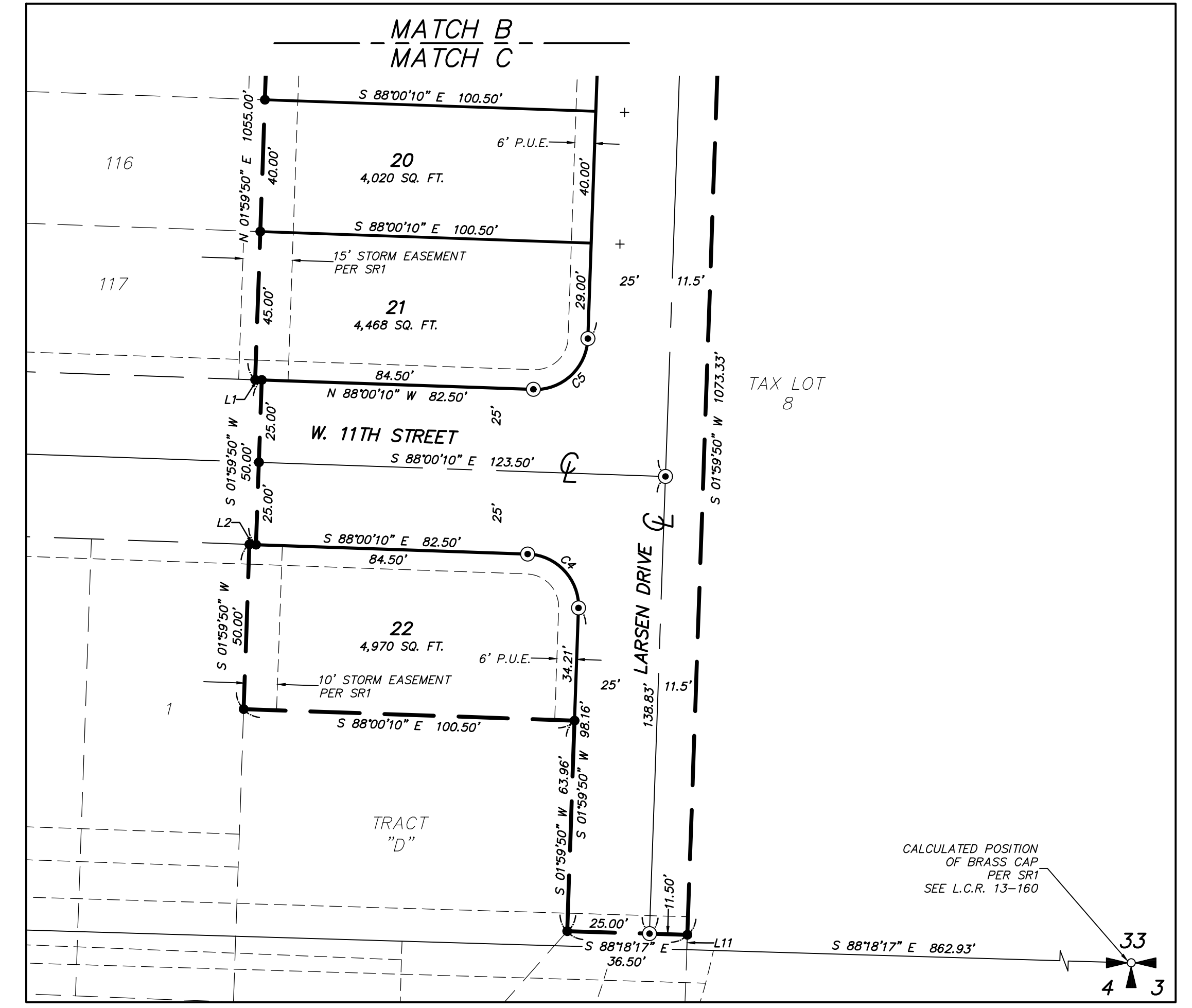
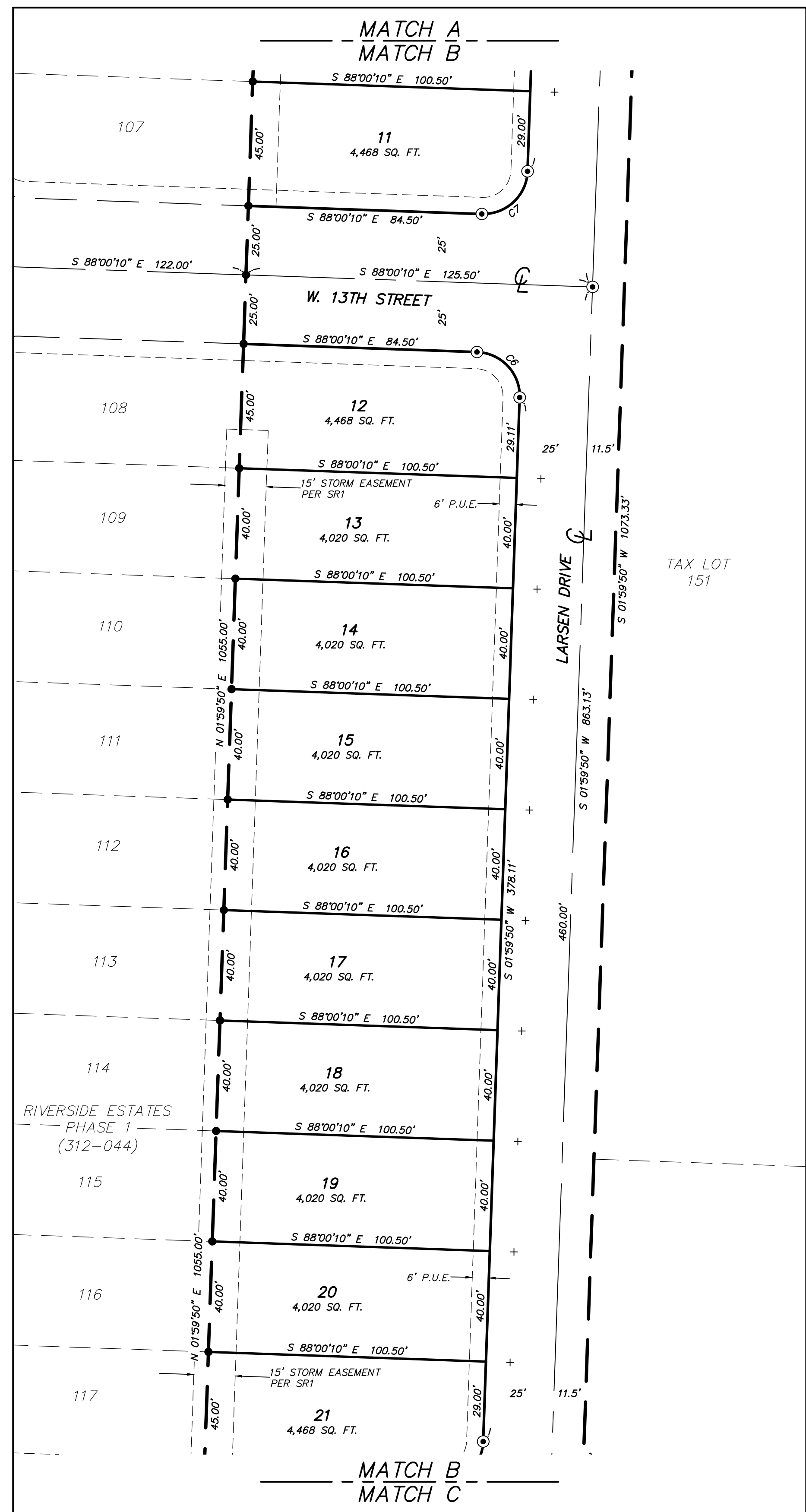
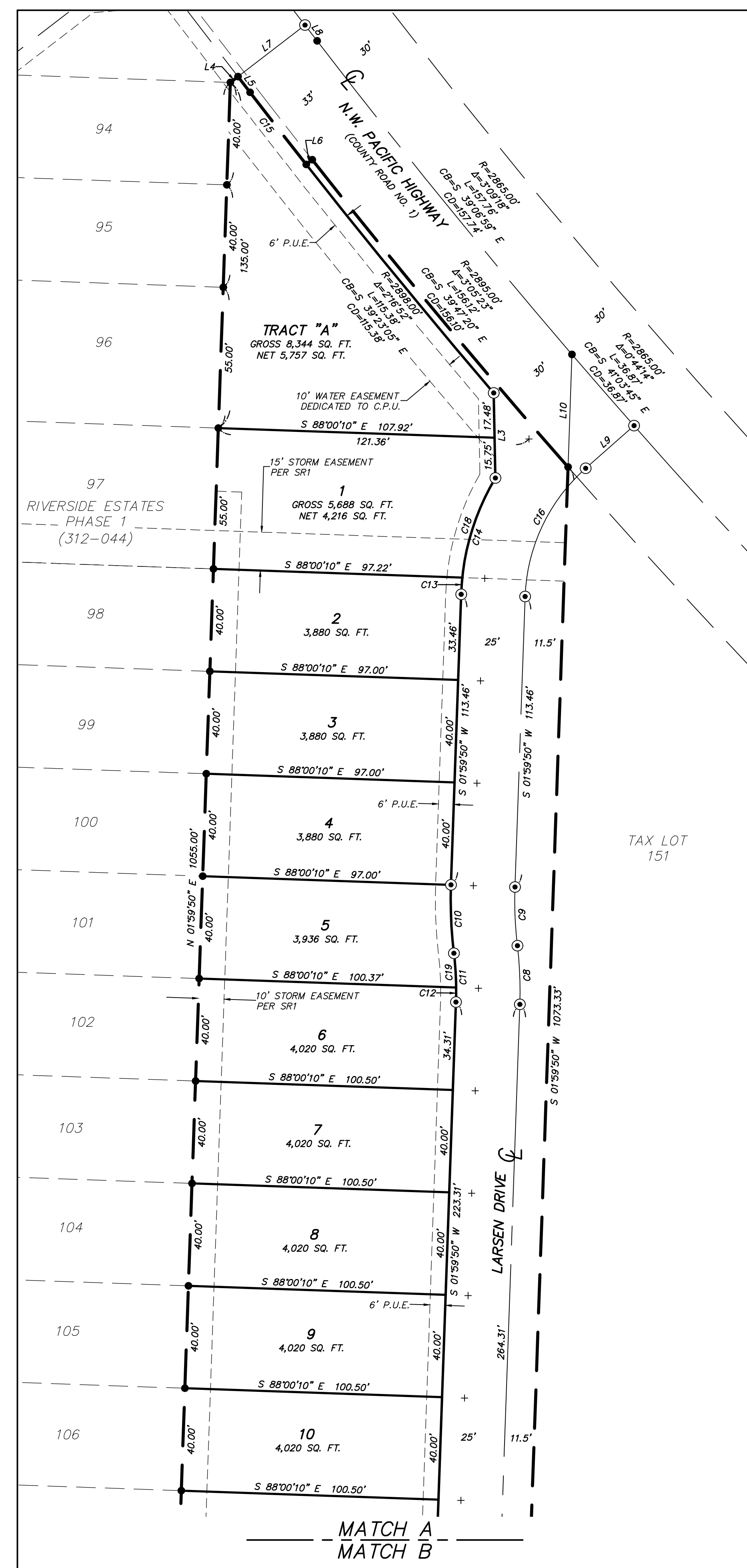
CURVE TABLE					
CURVE	RADIUS	DELTA	ARC DIST.	CHORD BEARING	CHORD DIST.
C4	16.00'	89°15'28"	24.93'	S 43°22'26" E	22.48'
C5	16.00'	90°00'37"	25.13'	N 46°59'42" E	22.63'
C6	16.00'	89°35'22"	25.02'	N 43°12'29" W	22.55'
C7	16.00'	90°00'00"	25.13'	N 46°59'50" E	22.63'
C8	150.00'	8°45'38"	22.94'	N 02°22'59" W	22.91'
C9	150.00'	8°45'38"	22.94'	S 02°22'59" E	22.91'
C10	175.00'	8°45'38"	26.76'	S 02°22'59" E	26.73'
C11	125.00'	8°45'38"	19.11'	N 02°22'59" W	19.09'
C12	125.00'	2°36'36"	5.69'	N 00°41'32" E	5.69'
C13	95.00'	46°34'44"	6.54'	S 03°58'13" W	6.54'
C14	95.00'	28°50'03"	47.81'	S 16°24'51" W	47.31'
C15	2898.00'	0°42'18"	35.66'	S 37°53'29" E	35.66'
C16	70.00'	46°34'44"	56.91'	S 25°17'12" W	55.35'
C18	95.00'	24°53'15"	41.27'	S 18°23'14" W	40.94'
C19	125.00'	6°09'03"	13.42'	N 03°41'17" W	13.41'

BASS OF BEARING:  
S 01°59'50" W ALONG THE EAST LINE OF SR1 BETWEEN MONUMENTS FOUND  
WASHINGTON STATE PLANE COORDINATE SYSTEM  
SOUTH ZONE, US SURVEY FEET. BASED ON REAL TIME KINEMATIC  
CORRECTIONS FROM THE WASHINGTON STATE REFERENCE NETWORK.



SCALE 1 INCH = 30 FEET

- LEGEND:**
- INDICATES FOUND AND HELD 1/2" REBAR WITH YELLOW PLASTIC CAP "PLS 42700" SET IN SR1 (TIED AUGUST 08, 2020)
  - INDICATES CALCULATED POSITION
  - ⊙ INDICATES 1/2" x 24" REBAR WITH YELLOW PLASTIC CAP "PLS 42700" SET
  - ⊕ INDICATES BRASS SCREW WITH BRASS WASHER INSCRIBED "PLS 42700" AT 8.75" OFFSET UNLESS OTHERWISE NOTED
  - SR INDICATES SURVEY REFERENCE
  - SQ.FT. INDICATES SQUARE FEET
  - P.U.E. INDICATES PUBLIC UTILITY EASEMENT
  - H.O.A. INDICATES HOME OWNERS ASSOCIATION
  - C.P.U. INDICATES CLARK PUBLIC UTILITIES
  - L.C.R. INDICATES LAND CORNER RECORD



PLS ENGINEERING MAKES NO WARRANTIES AS TO MATTERS OF UNWRITTEN TITLE SUCH AS ADVERSE POSSESSION, ACQUESCENCE, ESTOPPEL, ETC. A FIELD TRAVERSE WAS PERFORMED USING A FIVE SECOND TOTAL STATION THE FIELD TRAVERSE MET THE MINIMUM STANDARDS FOR SURVEYS AS DESIGNATED IN WAC 332-130-090. ALL CORNERS NOTED AS FOUND WERE VISITED ON 02-08-19.