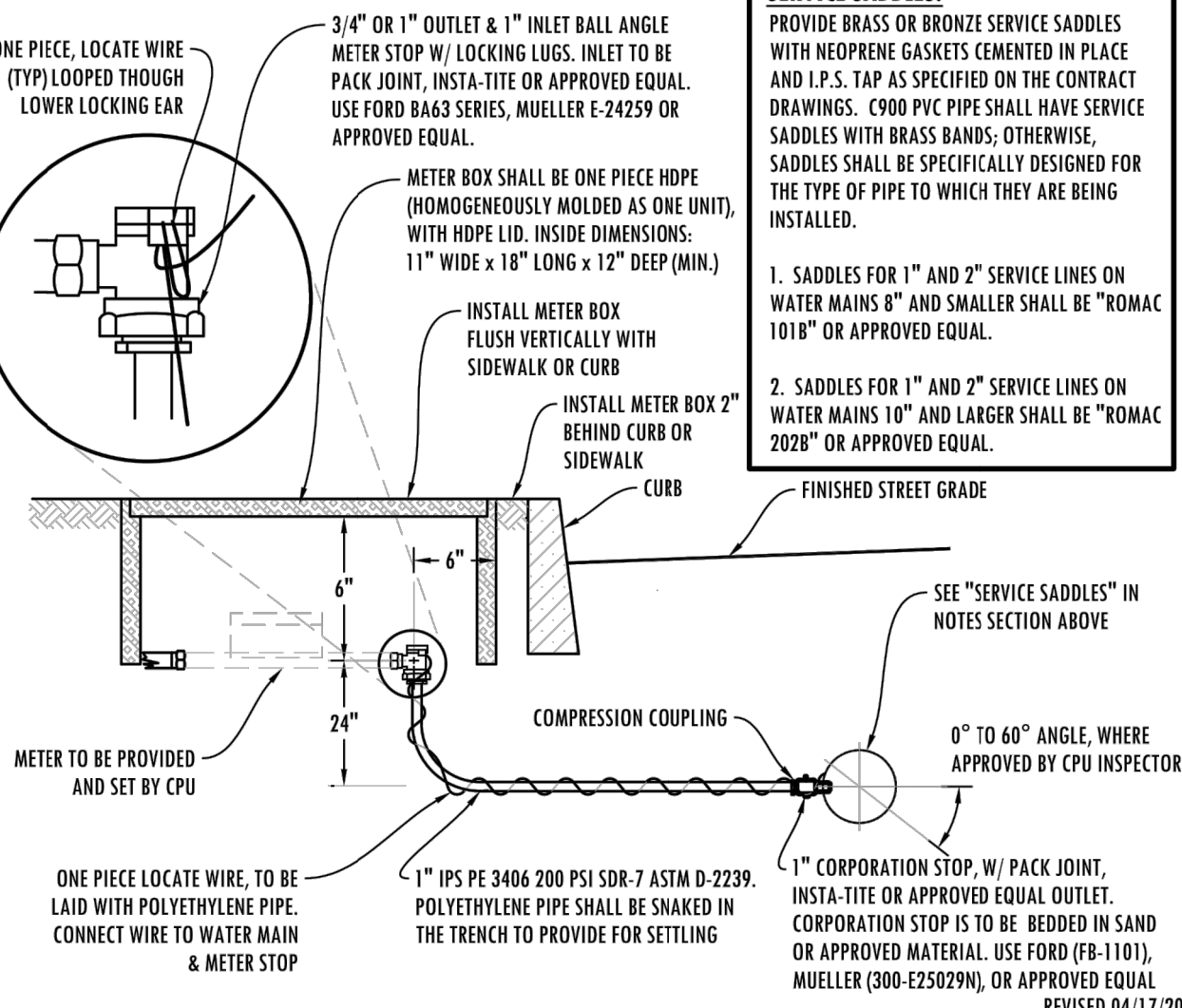
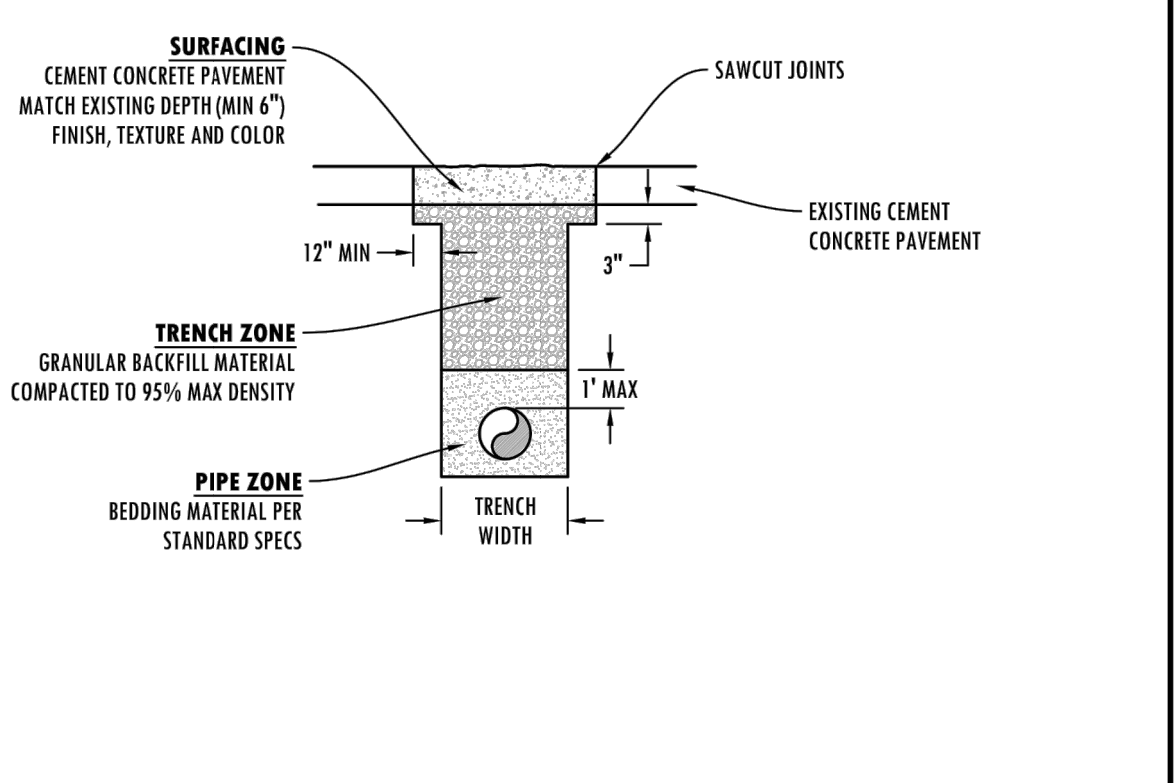


- NOTES:**
- ALL CONSTRUCTION MATERIALS AND WORKMANSHIP SHALL CONFORM TO THE CLARK PUBLIC UTILITIES (CPU) WATER CONSTRUCTION SPECIFICATIONS, STANDARD DETAILS AND THE LATEST EDITION OF THE "STANDARD SPECIFICATIONS FOR ROAD AND BRIDGE CONSTRUCTION" PUBLISHED BY WASHINGTON STATE DEPARTMENT OF TRANSPORTATION (WSDOT).
 - A WATER UTILITY INSPECTOR SHALL BE AT THE JOB SITE DURING CONSTRUCTION OF ALL WATER FACILITIES. CONTACT 360-992-8019 TWO (2) WORKING DAYS PRIOR TO COMMENCING WORK.
 - WORK WITHIN COUNTY RIGHT-OF-WAY SHALL CONFORM WITH CLARK COUNTY PUBLIC WORKS UTILITY PERMIT REQUIREMENTS AND DETAILS. WORK WITHIN STATE RIGHT-OF-WAY SHALL CONFORM TO WSDOT UTILITY PERMIT REQUIREMENTS AND DETAILS.
 - THE LOCATION OF THE UTILITIES SHALL BE VERIFIED IN ADVANCE TO ALLOW FOR ALIGNMENT ADJUSTMENTS. CALL UTILITY LOCATES TWO (2) WORKING DAYS PRIOR TO CONSTRUCTION (1-800-553-4244).
 - A TAPPING COMPANY APPROVED BY CLARK PUBLIC UTILITIES SHALL BE USED TO MAKE ALL TAPS.
 - LOCATE WIRE SHALL BE COATED, NO. 14 GA. SOFT DRAWN SOLID COPPER.
 - METER BOX ASSEMBLIES SHALL BE ARMORCAST (A6001429A), RAVEN (RMB1118), DFW (DFW464WBC-12) OR APPROVED EQUAL.
 - NO CONNECTIONS WILL BE ALLOWED TO AN EXISTING SERVICE PRIOR TO AN APPROVED PURITY TEST. PURITY TEST SHALL PRECEDE PRESSURE TEST.
 - STOP SERVICES SHALL BE PRESSURE TESTED WITH THE MAIN LINE AND BE CAPABLE OF WITHSTANDING THE MAINS TEST PRESSURE.
 - WATER METER BOX SHALL BE PLACED IN NON-PAVED AREAS, OUT OF CONFLICT WITH DRIVEWAYS, LANDSCAPING AND OTHER UTILITIES.
 - ALL COMPRESSION FITTINGS TO HAVE STAINLESS STEEL INSERTS.

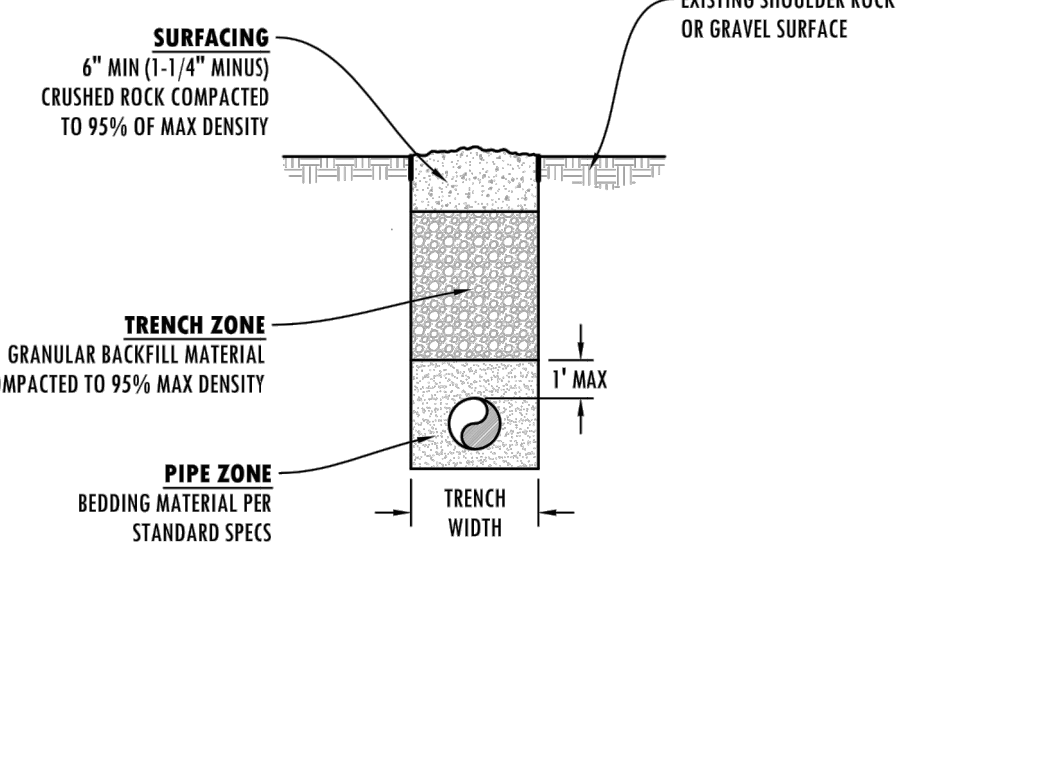


FILE NAME	STANDARD 1" WATER SERVICE WITH 5/8", 3/4" OR 1" WATER METER	Clark Public Utilities
1W		
SHEET	1 OF 1	STANDARD DETAILS



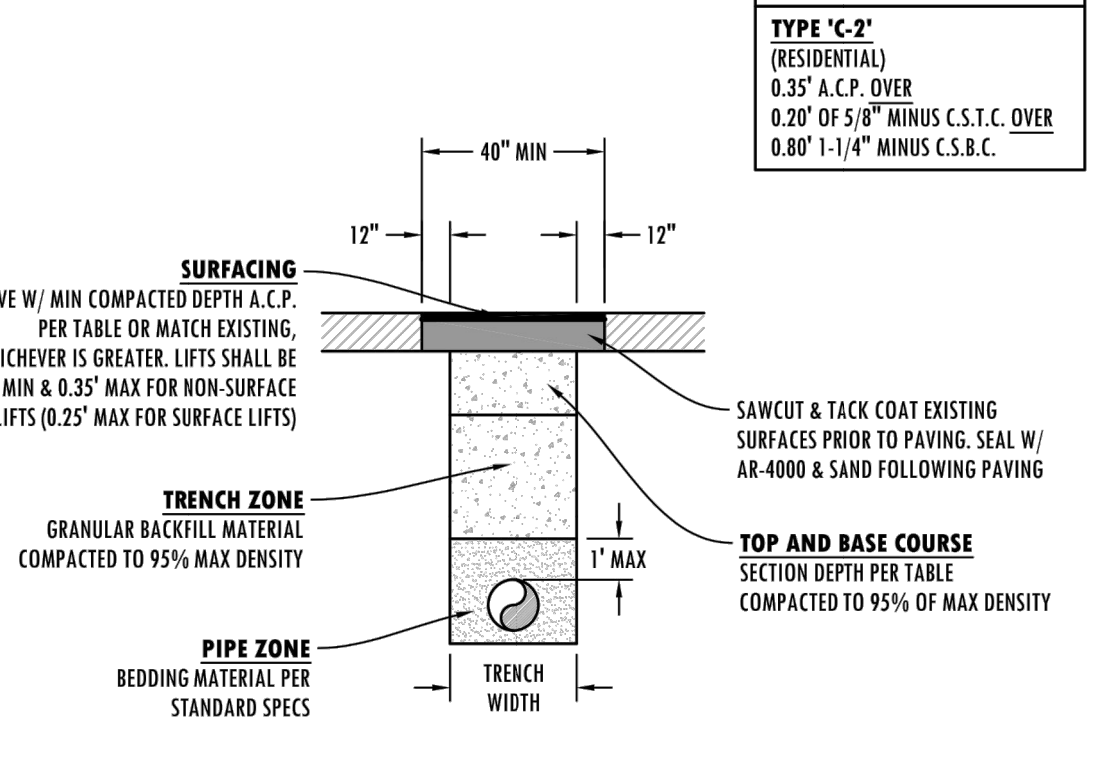
- TRENCHING NOTES:**
- SEE CLARK COUNTY OR WSDOT UTILITY PERMIT, WHICHEVER IS APPLICABLE, FOR ADDITIONAL TRENCH BACKFILL AND SURFACING REQUIREMENTS.
 - NATIVE MATERIALS MAY BE SUBSTITUTED FOR IMPORTED GRANULAR MATERIAL PROVIDING IT IS PRE-APPROVED BY THE COUNTY ENGINEER OR AUTHORIZED REPRESENTATIVE.
 - TRENCH EXCAVATION, BEDDING, AND BACKFILL FOR WATER MAINS SHALL BE IN ACCORDANCE WITH SECTION 7-10 OF THE MOST CURRENT STANDARD SPECIFICATIONS. BED PIPE PER SUBSECTION 7-10.3(9) OF THE STANDARD SPECIFICATIONS.
 - IN THE TRENCH ZONE, USE METHOD C COMPACTION PER SECTION 2-03.3(14).

FILE NAME	CEMENT CONCRETE PAVEMENT TYPE 'E' RESTORATION	Clark Public Utilities
10W		
SHEET	1 OF 1	STANDARD DETAILS



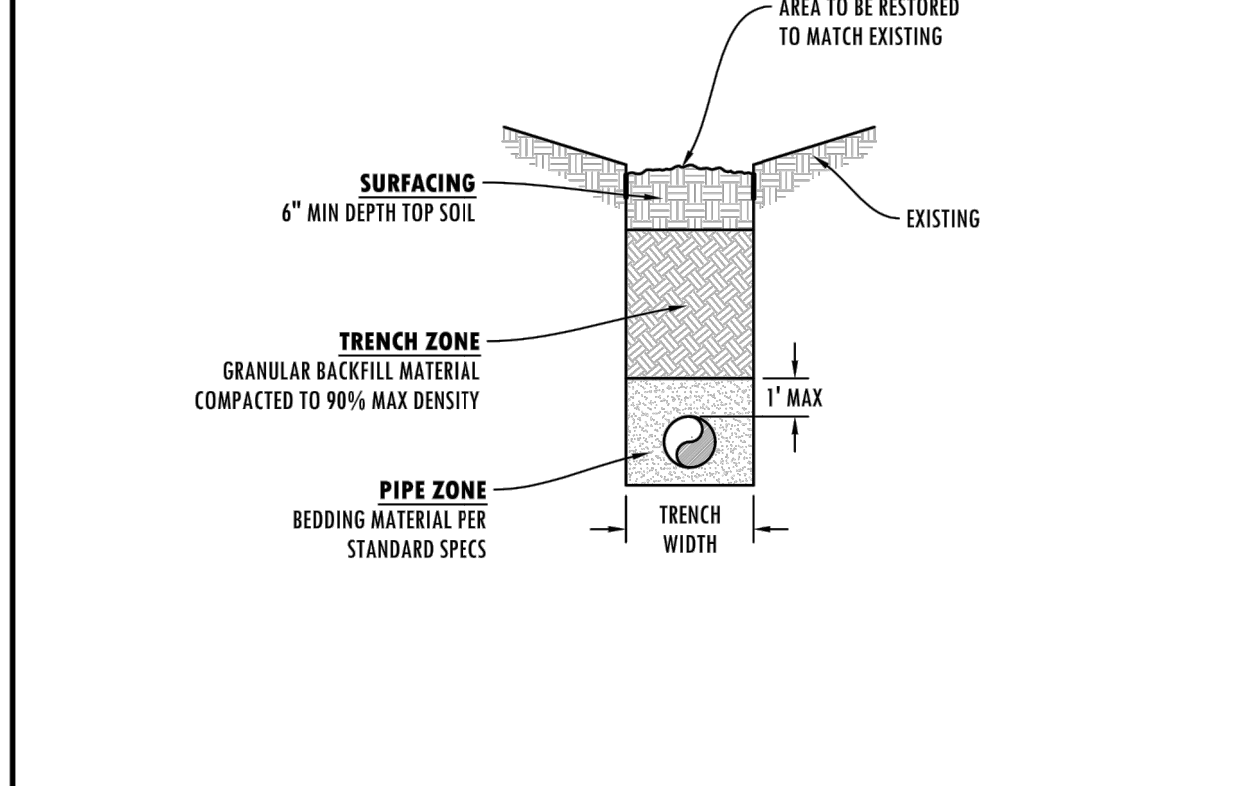
- TRENCHING NOTES:**
- SEE CLARK COUNTY OR WSDOT UTILITY PERMIT, WHICHEVER IS APPLICABLE, FOR ADDITIONAL TRENCH BACKFILL AND SURFACING REQUIREMENTS.
 - NATIVE MATERIALS MAY BE SUBSTITUTED FOR IMPORTED GRANULAR MATERIAL PROVIDING IT IS PRE-APPROVED BY THE COUNTY ENGINEER OR AUTHORIZED REPRESENTATIVE.
 - TRENCH EXCAVATION, BEDDING, AND BACKFILL FOR WATER MAINS SHALL BE IN ACCORDANCE WITH SECTION 7-10 OF THE MOST CURRENT STANDARD SPECIFICATIONS. BED PIPE PER SUBSECTION 7-10.3(9) OF THE STANDARD SPECIFICATIONS.
 - IN THE TRENCH ZONE, USE METHOD C COMPACTION PER SECTION 2-03.3(14).

FILE NAME	ROADWAY SHOULDERS, GRAVEL SURFACE TYPE 'B' RESTORATION	Clark Public Utilities
11W		
SHEET	1 OF 1	STANDARD DETAILS



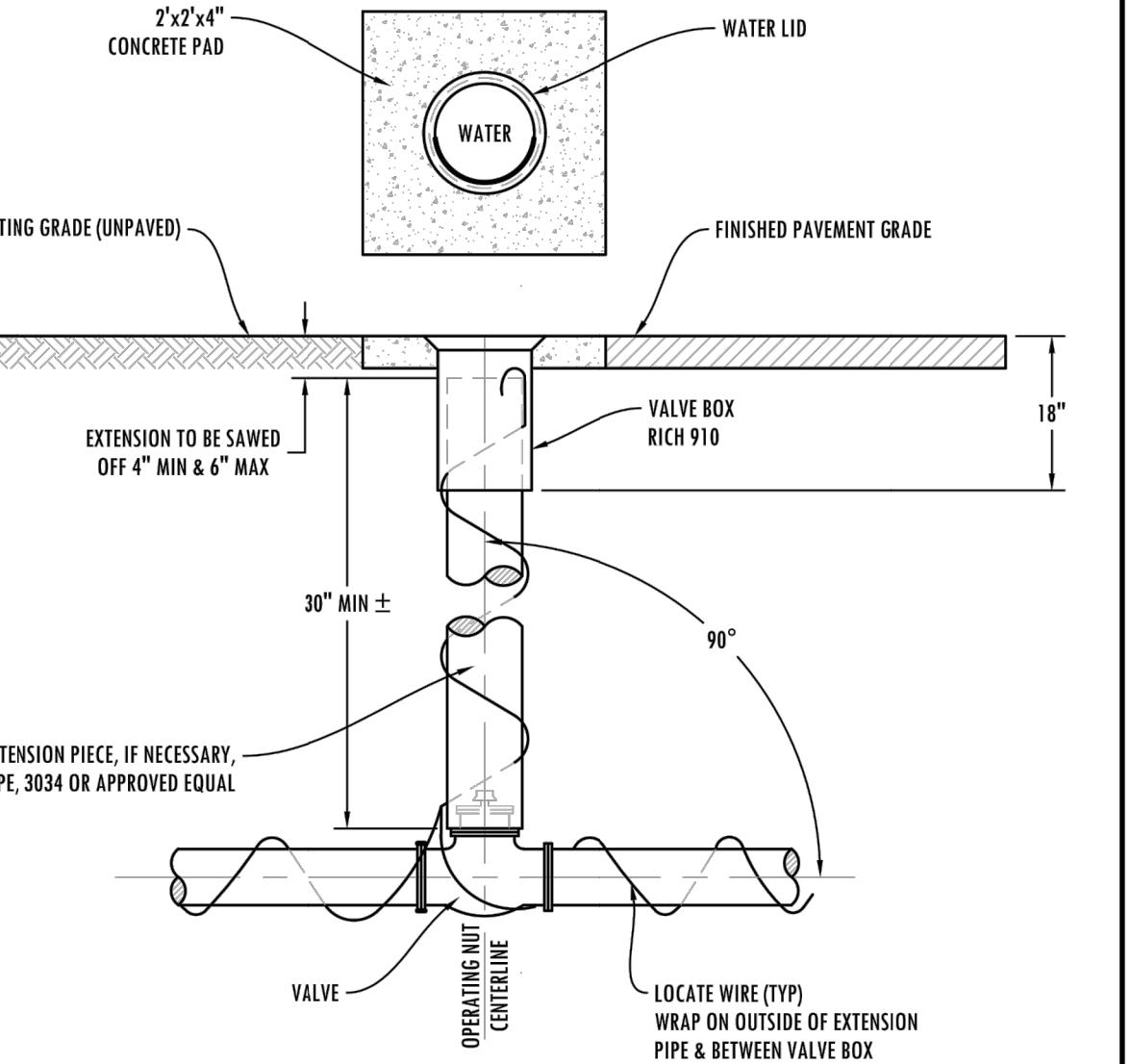
- TRENCHING NOTES:**
- SEE CLARK COUNTY OR WSDOT UTILITY PERMIT, WHICHEVER IS APPLICABLE, FOR ADDITIONAL TRENCH BACKFILL AND SURFACING REQUIREMENTS.
 - NATIVE MATERIALS MAY BE SUBSTITUTED FOR IMPORTED GRANULAR MATERIAL PROVIDING IT IS PRE-APPROVED BY THE COUNTY ENGINEER OR AUTHORIZED REPRESENTATIVE.
 - TRENCH EXCAVATION, BEDDING, AND BACKFILL FOR WATER MAINS SHALL BE IN ACCORDANCE WITH SECTION 7-10 OF THE MOST CURRENT STANDARD SPECIFICATIONS. BED PIPE PER SUBSECTION 7-10.3(9) OF THE STANDARD SPECIFICATIONS.
 - IN THE TRENCH ZONE, USE METHOD C COMPACTION PER SECTION 2-03.3(14).

FILE NAME	ASPHALT CONCRETE PAVEMENT TYPE 'C1' & 'C2' RESTORATION	Clark Public Utilities
12W		
SHEET	1 OF 1	STANDARD DETAILS



- TRENCHING NOTES:**
- SEE CLARK COUNTY OR WSDOT UTILITY PERMIT, WHICHEVER IS APPLICABLE, FOR ADDITIONAL TRENCH BACKFILL AND SURFACING REQUIREMENTS.
 - NATIVE MATERIALS MAY BE SUBSTITUTED FOR IMPORTED GRANULAR MATERIAL PROVIDING IT IS PRE-APPROVED BY THE COUNTY ENGINEER OR AUTHORIZED REPRESENTATIVE.
 - TRENCH EXCAVATION, BEDDING, AND BACKFILL FOR WATER MAINS SHALL BE IN ACCORDANCE WITH SECTION 7-10 OF THE MOST CURRENT STANDARD SPECIFICATIONS. BED PIPE PER SUBSECTION 7-10.3(9) OF THE STANDARD SPECIFICATIONS.
 - IN THE TRENCH ZONE, USE METHOD C COMPACTION PER SECTION 2-03.3(14).

FILE NAME	NATIVE BACKFILL OUTSIDE ROADWAY TYPE 'A' RESTORATION	Clark Public Utilities
13W		
SHEET	1 OF 1	STANDARD DETAILS



- TRENCHING NOTES:**
- SEE CLARK COUNTY OR WSDOT UTILITY PERMIT, WHICHEVER IS APPLICABLE, FOR ADDITIONAL TRENCH BACKFILL AND SURFACING REQUIREMENTS.
 - NATIVE MATERIALS MAY BE SUBSTITUTED FOR IMPORTED GRANULAR MATERIAL PROVIDING IT IS PRE-APPROVED BY THE COUNTY ENGINEER OR AUTHORIZED REPRESENTATIVE.
 - TRENCH EXCAVATION, BEDDING, AND BACKFILL FOR WATER MAINS SHALL BE IN ACCORDANCE WITH SECTION 7-10 OF THE MOST CURRENT STANDARD SPECIFICATIONS. BED PIPE PER SUBSECTION 7-10.3(9) OF THE STANDARD SPECIFICATIONS.
 - IN THE TRENCH ZONE, USE METHOD C COMPACTION PER SECTION 2-03.3(14).

FILE NAME	STANDARD VALVE BOX ASSEMBLY	Clark Public Utilities
8W		
SHEET	1 OF 1	STANDARD DETAILS



PERMIT DRAWINGS

THE INFORMATION CONTAINED HEREIN IS PROPRIETARY. THIS DOCUMENT MAY NOT BE USED OR REPRODUCED WITHOUT THE WRITTEN CONSENT OF JACKOLA ENGR. & ARCH., P.C.

BELLIKA APARTMENTS

EAST 7TH STREET
LA CENTER, WASHINGTON

DRAWN: SLD	CHECKED: SLD
DATE: 4/17/20	
REVISIONS:	

WATER DETAILS AND NOTES

C2.20

TYPE 'C' PAVEMENT SECTION

TYPE 'C-1'
(COLLECTOR OR ARTERIAL)
0.50" A.C.P. OVER
0.80" OF 1-1/4" MINUS C.S.B.C.

TYPE 'C-2'
(RESIDENTIAL)
0.35" A.C.P. OVER
0.20" OF 5/8" MINUS C.S.T.C. OVER
0.80" 1-1/4" MINUS C.S.B.C.

TRENCHING NOTES:

- SEE CLARK COUNTY OR WSDOT UTILITY PERMIT, WHICHEVER IS APPLICABLE, FOR ADDITIONAL TRENCH BACKFILL AND SURFACING REQUIREMENTS.
- NATIVE MATERIALS MAY BE SUBSTITUTED FOR IMPORTED GRANULAR MATERIAL PROVIDING IT IS PRE-APPROVED BY THE COUNTY ENGINEER OR AUTHORIZED REPRESENTATIVE.
- TRENCH EXCAVATION, BEDDING, AND BACKFILL FOR WATER MAINS SHALL BE IN ACCORDANCE WITH SECTION 7-10 OF THE MOST CURRENT STANDARD SPECIFICATIONS. BED PIPE PER SUBSECTION 7-10.3(9) OF THE STANDARD SPECIFICATIONS.
- IN THE TRENCH ZONE, USE METHOD C COMPACTION PER SECTION 2-03.3(14).

FILE NAME	ASPHALT CONCRETE PAVEMENT TYPE 'C1' & 'C2' RESTORATION	Clark Public Utilities
12W		
SHEET	1 OF 1	STANDARD DETAILS

TYPE 'B' RESTORATION

TRENCHING NOTES:

- SEE CLARK COUNTY OR WSDOT UTILITY PERMIT, WHICHEVER IS APPLICABLE, FOR ADDITIONAL TRENCH BACKFILL AND SURFACING REQUIREMENTS.
- NATIVE MATERIALS MAY BE SUBSTITUTED FOR IMPORTED GRANULAR MATERIAL PROVIDING IT IS PRE-APPROVED BY THE COUNTY ENGINEER OR AUTHORIZED REPRESENTATIVE.
- TRENCH EXCAVATION, BEDDING, AND BACKFILL FOR WATER MAINS SHALL BE IN ACCORDANCE WITH SECTION 7-10 OF THE MOST CURRENT STANDARD SPECIFICATIONS. BED PIPE PER SUBSECTION 7-10.3(9) OF THE STANDARD SPECIFICATIONS.
- IN THE TRENCH ZONE, USE METHOD C COMPACTION PER SECTION 2-03.3(14).

FILE NAME	ROADWAY SHOULDERS, GRAVEL SURFACE TYPE 'B' RESTORATION	Clark Public Utilities
11W		
SHEET	1 OF 1	STANDARD DETAILS

TYPE 'E' RESTORATION

TRENCHING NOTES:

- SEE CLARK COUNTY OR WSDOT UTILITY PERMIT, WHICHEVER IS APPLICABLE, FOR ADDITIONAL TRENCH BACKFILL AND SURFACING REQUIREMENTS.
- NATIVE MATERIALS MAY BE SUBSTITUTED FOR IMPORTED GRANULAR MATERIAL PROVIDING IT IS PRE-APPROVED BY THE COUNTY ENGINEER OR AUTHORIZED REPRESENTATIVE.
- TRENCH EXCAVATION, BEDDING, AND BACKFILL FOR WATER MAINS SHALL BE IN ACCORDANCE WITH SECTION 7-10 OF THE MOST CURRENT STANDARD SPECIFICATIONS. BED PIPE PER SUBSECTION 7-10.3(9) OF THE STANDARD SPECIFICATIONS.
- IN THE TRENCH ZONE, USE METHOD C COMPACTION PER SECTION 2-03.3(14).

FILE NAME	CEMENT CONCRETE PAVEMENT TYPE 'E' RESTORATION	Clark Public Utilities
10W		
SHEET	1 OF 1	STANDARD DETAILS

STANDARD MANUAL AIR RELEASE VALVE

NOTES:

- ALL CONSTRUCTION MATERIALS AND WORKMANSHIP SHALL CONFORM TO THE CLARK PUBLIC UTILITIES (CPU) WATER CONSTRUCTION SPECIFICATIONS, STANDARD DETAILS AND THE 2000 EDITION OF THE "STANDARD SPECIFICATIONS FOR ROAD AND BRIDGE CONSTRUCTION" PUBLISHED BY WASHINGTON STATE DEPARTMENT OF TRANSPORTATION (WSDOT).
- WATER UTILITY INSPECTOR SHALL BE AT THE JOB SITE DURING CONSTRUCTION OF ALL WATER FACILITIES. CONTACT 360-992-8019 TWO (2) WORKING DAYS PRIOR TO COMMENCING WORK.
- WORK WITHIN COUNTY RIGHT-OF-WAY SHALL CONFORM WITH CLARK COUNTY PUBLIC WORKS UTILITY PERMIT REQUIREMENTS AND DETAILS. WORK WITHIN STATE RIGHT-OF-WAY SHALL CONFORM TO WSDOT UTILITY PERMIT REQUIREMENTS AND DETAILS.
- THE LOCATION OF THE UTILITIES SHALL BE VERIFIED IN ADVANCE TO ALLOW FOR ALIGNMENT ADJUSTMENTS. CALL UTILITY LOCATES TWO (2) WORKING DAYS PRIOR TO CONSTRUCTION (1-800-553-4344).
- A TAPPING COMPANY APPROVED BY CLARK PUBLIC UTILITIES SHALL BE USED TO MAKE ALL TAPS.
- LOCATE WIRE SHALL BE NON-COATED, NO. 14 GA. SOFT DRAWN SOLID COPPER.
- NO CONNECTIONS WILL BE ALLOWED TO AN EXISTING SERVICE PRIOR TO AN APPROVED PURITY TEST. PURITY TEST SHALL PRECEDE PRESSURE TEST.
- STUB SERVICES SHALL BE PRESSURE TESTED WITH THE MAIN LINE AND BE CAPABLE OF WITH-STANDING THE MAINS TEST PRESSURE.
- ALL COMPRESSION FITTINGS TO HAVE STAINLESS STEEL INSERTS.

FILE NAME	STANDARD MANUAL AIR RELEASE VALVE	Clark Public Utilities
9W		
SHEET	1 OF 1	STANDARD DETAILS

BELOW GROUND INSTALLATION

NOTES:

- APPROVED DOUBLE CHECK VALVE ASSEMBLY TO LAY HORIZONTAL WITH GROUND.
- DESIGNED FOR BACK SIPHONAGE AND BACK PRESSURE.
- TEST COCKS TO EITHER FACE OUTWARDS OR UPWARDS FROM ASSEMBLY.
- DISINTEGRATE, PRESSURE TEST AND THOROUGHLY FLUSH LINES PRIOR TO INSTALLATION OF BACKFLOW PREVENTER.
- THE DCVA MAY BE INSTALLED ABOVE OR BELOW GROUND PROVIDED ALL CLEARANCES ARE MET.
- DO NOT INSTALL IN AN AREA SUBJECT TO FLOODING.
- MUST BE PROTECTED FROM FREEZING CONDITIONS.
- THE BACKFLOW ASSEMBLY SHALL BE A STATE APPROVED MODEL.
- A PLUMBING PERMIT IS REQUIRED. PLEASE CONTACT YOUR LOCAL PLUMBING PERMIT CENTER.
- MUST BE TESTED AFTER INSTALLATION AND YEARLY THEREAFTER BY A WASHINGTON STATE CERTIFIED BACKFLOW ASSEMBLY TESTER. TEST RESULTS SHALL BE SENT TO CLARK PUBLIC UTILITIES WATER SERVICES.

FILE NAME	STANDARD DCDA (DOUBLE CHECK DETECTOR ASSEMBLY) 2" & SMALLER	Clark Public Utilities
16W		
SHEET	1 OF 1	STANDARD DETAILS

BELOW GROUND INSTALLATION

NOTES:

- APPROVED DOUBLE CHECK VALVE ASSEMBLY TO LAY HORIZONTAL WITH THE GROUND.
- DESIGNED FOR BACK SIPHONAGE AND BACK PRESSURE.
- THE WATER LINE SHALL BE DISINTEGRATED, FLUSHED, AND PRESSURE TESTED PRIOR TO INSTALLING THE BACKFLOW ASSEMBLY. THE BACKFLOW ASSEMBLY SHALL BE PROTECTED FROM FREEZING AND FLOODING.
- THE D.C.V.A. MAY BE INSTALLED ABOVE OR BELOW GROUND PROVIDED ALL CLEARANCES ARE MET.
- ALL PIPE, VALVE, AND FITTING JOINTS, FROM THE SUPPLY MAIN, SHALL BE RESTRAINED.
- FIRE DEPT. CONNECTION SHALL NOT EXIT THROUGH THE TOP OF THE VAULT.
- GROUT PIPE ENTRANCES AND JOINTS IN VAULT WITH WATER-TITE GROUT.
- ALL VAULTS SHALL BE PRE-APPROVED PRIOR TO INSTALLATION.
- VAULTS SHALL BE INSTALLED AT PROPERTY LINE OR EASEMENT LINE AND ON OWNERS PROPERTY.
- VAULTS SHALL HAVE A MINIMUM OF 3' CLEARANCE FROM ALL STRUCTURES.
- THE BACKFLOW ASSEMBLY SHALL BE TESTED AFTER INSTALLATION AND PRIOR TO ACCEPTANCE AND ALSO YEARLY THEREAFTER BY A WASHINGTON STATE CERTIFIED BACKFLOW ASSEMBLY TESTER. TEST RESULTS SHALL BE SENT TO CLARK PUBLIC UTILITIES WATER SERVICES.

FILE NAME	STANDARD DCDA (DOUBLE CHECK DETECTOR ASSEMBLY) 2-1/2" & LARGER	Clark Public Utilities
15W		
SHEET	1 OF 1	STANDARD DETAILS

CONTROL DENSITY FILL - ASPHALT CONCRETE PAVEMENT TYPE 'D' RESTORATION

TRENCHING NOTES:

- SEE CLARK COUNTY OR WSDOT UTILITY PERMIT, WHICHEVER IS APPLICABLE, FOR ADDITIONAL TRENCH BACKFILL AND SURFACING REQUIREMENTS.
- NATIVE MATERIALS MAY BE SUBSTITUTED FOR IMPORTED GRANULAR MATERIAL PROVIDING IT IS PRE-APPROVED BY THE COUNTY ENGINEER OR AUTHORIZED REPRESENTATIVE.
- TRENCH EXCAVATION, BEDDING, AND BACKFILL FOR WATER MAINS SHALL BE IN ACCORDANCE WITH SECTION 7-10 OF THE MOST CURRENT STANDARD SPECIFICATIONS. BED PIPE PER SUBSECTION 7-10.3(9) OF THE STANDARD SPECIFICATIONS.
- IN THE TRENCH ZONE, USE METHOD C COMPACTION PER SECTION 2-03.3(14).

FILE NAME	CONTROL DENSITY FILL - ASPHALT CONCRETE PAVEMENT TYPE 'D' RESTORATION	Clark Public Utilities
14W		
SHEET	1 OF 1	STANDARD DETAILS

NATIVE BACKFILL OUTSIDE ROADWAY TYPE 'A' RESTORATION

TRENCHING NOTES:

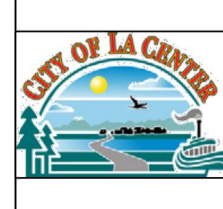
- SEE CLARK COUNTY OR WSDOT UTILITY PERMIT, WHICHEVER IS APPLICABLE, FOR ADDITIONAL TRENCH BACKFILL AND SURFACING REQUIREMENTS.
- NATIVE MATERIALS MAY BE SUBSTITUTED FOR IMPORTED GRANULAR MATERIAL PROVIDING IT IS PRE-APPROVED BY THE COUNTY ENGINEER OR AUTHORIZED REPRESENTATIVE.
- TRENCH EXCAVATION, BEDDING, AND BACKFILL FOR WATER MAINS SHALL BE IN ACCORDANCE WITH SECTION 7-10 OF THE MOST CURRENT STANDARD SPECIFICATIONS. BED PIPE PER SUBSECTION 7-10.3(9) OF THE STANDARD SPECIFICATIONS.
- IN THE TRENCH ZONE, USE METHOD C COMPACTION PER SECTION 2-03.3(14).

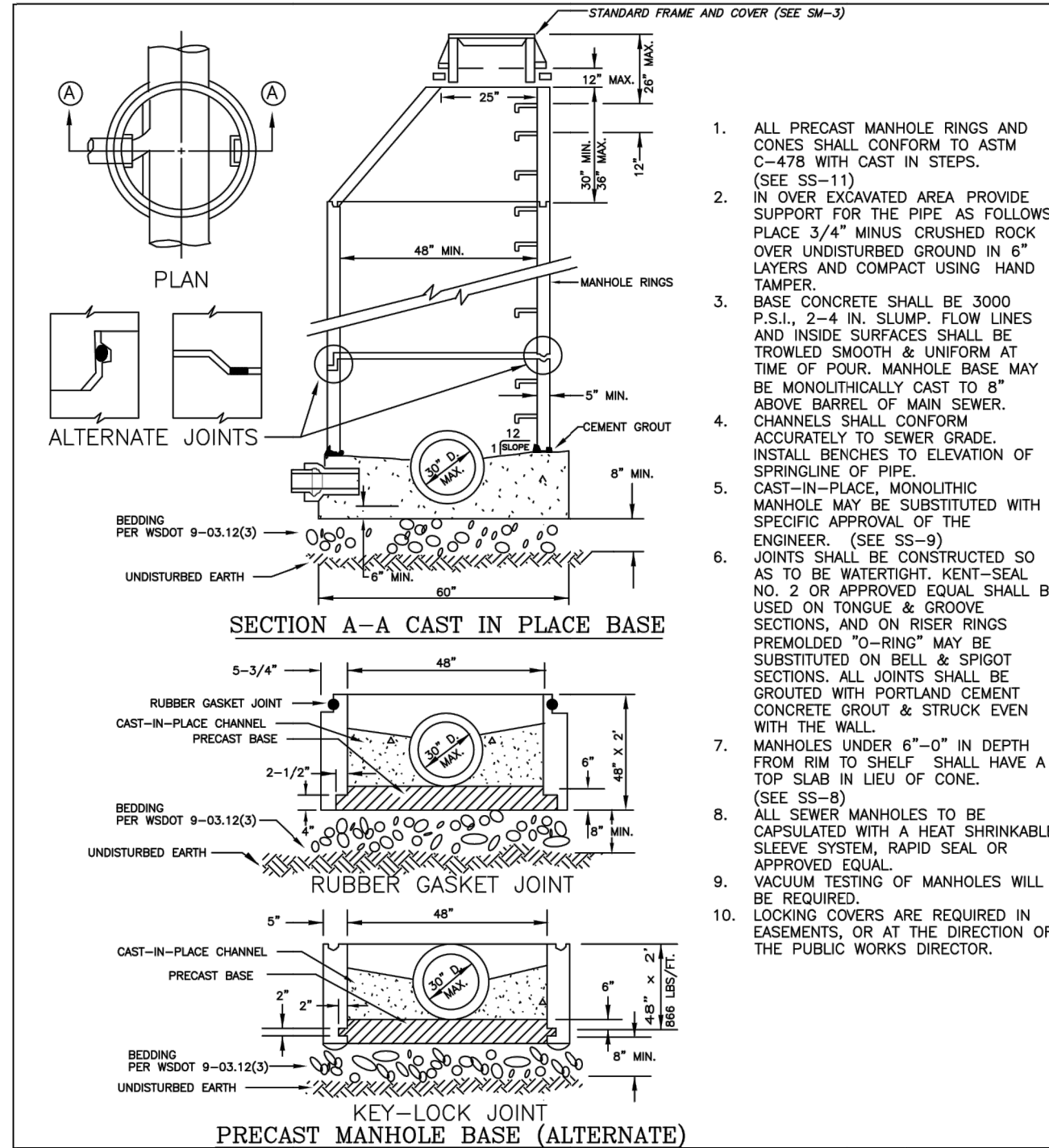
FILE NAME	NATIVE BACKFILL OUTSIDE ROADWAY TYPE 'A' RESTORATION	Clark Public Utilities
13W		
SHEET	1 OF 1	STANDARD DETAILS

1. ALL MATERIALS, WORKMANSHIP AND INSTALLATION OF STORM SEWERS SHALL BE IN CONFORMANCE WITH THE LATEST EDITION OF THE "CITY OF LA CENTER ENGINEERING STANDARDS FOR PUBLIC WORKS CONSTRUCTION" AND THE LATEST EDITION OF THE "WSDOT STANDARD SPECIFICATIONS FOR ROAD, BRIDGE, AND MUNICIPAL CONSTRUCTION". HEREINAFTER REFERRED TO AS THE "STANDARD SPECIFICATIONS". PREPARED BY THE WASHINGTON STATE CHAPTER OF THE AMERICAN PUBLIC WORKS ASSOCIATION (APWA) AND THE WASHINGTON STATE DEPARTMENT OF TRANSPORTATION, EXCEPT AS NOTED HEREIN OR ON THE STANDARD PLANS.
2. THE CONTRACTOR IS TO VERIFY ALL INVERT AND TOP ELEVATIONS OF EXISTING STORM SEWERS, CENTERLINE AND TOP OF CURB ELEVATIONS, AND REPORT ANY DISCREPANCIES IMMEDIATELY TO THE ENGINEER.
3. ALL STORM SEWER CONSTRUCTION IS SUBJECT TO INSPECTION, AND APPROVAL, PRIOR TO COVER BY THE CITY OF LA CENTER. THE CONTRACTOR SHALL NOTIFY THE CONSTRUCTION OFFICE AT LEAST 48 HOURS PRIOR TO THE START OF CONSTRUCTION. A PRE-CONSTRUCTION MEETING IS REQUIRED PRIOR BEGINNING OF THE CONSTRUCTION.
4. THE CONTRACTOR SHALL BE RESPONSIBLE FOR DETERMINING THE LOCATION OF ALL UNDERGROUND UTILITIES PRIOR TO THE START OF CONSTRUCTION AND TO NOTIFY THE ENGINEER OF ANY POTENTIAL CONFLICTS. THE CONTRACTOR SHALL DIG TEST HOLES OVER ALL EXISTING UTILITIES PRIOR TO CONSTRUCTION TO DETERMINE THEIR EXACT LOCATION. CALL 1-800-424-5555, (NORTHWEST UTILITY NOTIFICATION CENTER), FOR MARK-UP OF EXISTING UTILITIES, A MINIMUM OF 2 WORKING DAYS PRIOR TO START OF CONSTRUCTION.
5. IT SHALL BE THE RESPONSIBILITY OF THE DEVELOPER AND/OR CONTRACTOR TO PROCURE ALL APPLICABLE PERMITS, LICENSES AND CERTIFICATES RELATIVE TO THE TRADES TO COMPLETE THE PROJECT AND FOR THE USE OF SUCH WORK WHEN COMPLETED. COMPLIANCE SHALL BE AT ALL LEVELS, FEDERAL, STATE AND CITY, RELATING TO THE PERFORMANCE OF THIS WORK.
6. THE CONTRACTOR SHALL OBTAIN ALL OFFSITE CONSTRUCTION EASEMENTS PRIOR TO THE START OF CONSTRUCTION. THE CONTRACTOR SHALL VERIFY THAT ALL OFFSITE UTILITIES EASEMENTS HAVE BEEN OBTAINED BY THE OWNER PRIOR TO THE COMMENCEMENT OF ANY OFFSITE CONSTRUCTION.
7. THE CONTRACTOR SHALL SUBMIT A TRAFFIC CONTROL PLAN TO THE PUBLIC WORKS DEPARTMENT THAT MUST BE APPROVED BY THE PUBLIC WORKS DEPARTMENT PRIOR TO CONSTRUCTION.
8. ALL CATCH BASINS AND CURB INLETS SHALL BE STENCILED AS FOLLOWS: "DUMP NO WASTE-DRAINS TO STREAM".
9. SIGNS THAT READ: "WATER QUALITY FILTER-PLEASE LEAVE VEGETATED" SHALL BE INSTALLED EVERY 50 FEET ON FENCE OR POSTS ALONG WATER QUALITY BIOFILTRATION SYSTEMS.
10. VEGETATION IN BIOFILTRATION SYSTEMS SHALL BECOME FULLY ESTABLISHED PRIOR TO COMMENCING WITH INSTALLATION OF A.C. PAVEMENT FOR ALL AREAS DRAINING INTO THE WATER QUALITY SYSTEM. VEGETATION IN BIOFILTRATION SYSTEMS TO BE THE FOLLOWING GRASS SEED MIX (PROPORTIONS GIVEN BY WEIGHT):
40% REDTOP BENTGRASS, 30% RED FESCUE, 20% TALL FESCUE, 5% PERENNIAL RYE, 5% RUSSIAN WILDRYE.
11. PIPES OVER 12" DIA. SHALL HAVE A CHILD PROTECTION DEVICE AT INFLUENT END.
12. ALL STORM MANHOLES INSTALLED WITHIN AN EASEMENT OR OUTSIDE THE CITY RIGHT-OF-WAY SHALL HAVE LOCKING LID COVERS.
13. MATERIAL CERTIFICATION FOR ALL STORM MANHOLES, CATCHBASINS, AND CURB INLETS SHALL BE PROVIDED TO THE CITY INSPECTOR.
14. ALL ROOF AND LOWPOINT DRAINS TO BE DIRECTED TO APPROVED DRAINAGE PER PLANS.
15. ALL TRENCH BACKFILLING WILL CONFORM TO STANDARD DETAIL SS-4. PIPE BEDDING WILL CONFORM TO STANDARD DETAIL SS-5.
16. ALL STORM SEWER CLEANOUTS WILL MEET THE REQUIREMENTS OF STANDARD DETAIL SS-14.

GENERAL STORMWATER NOTES


PLAN #

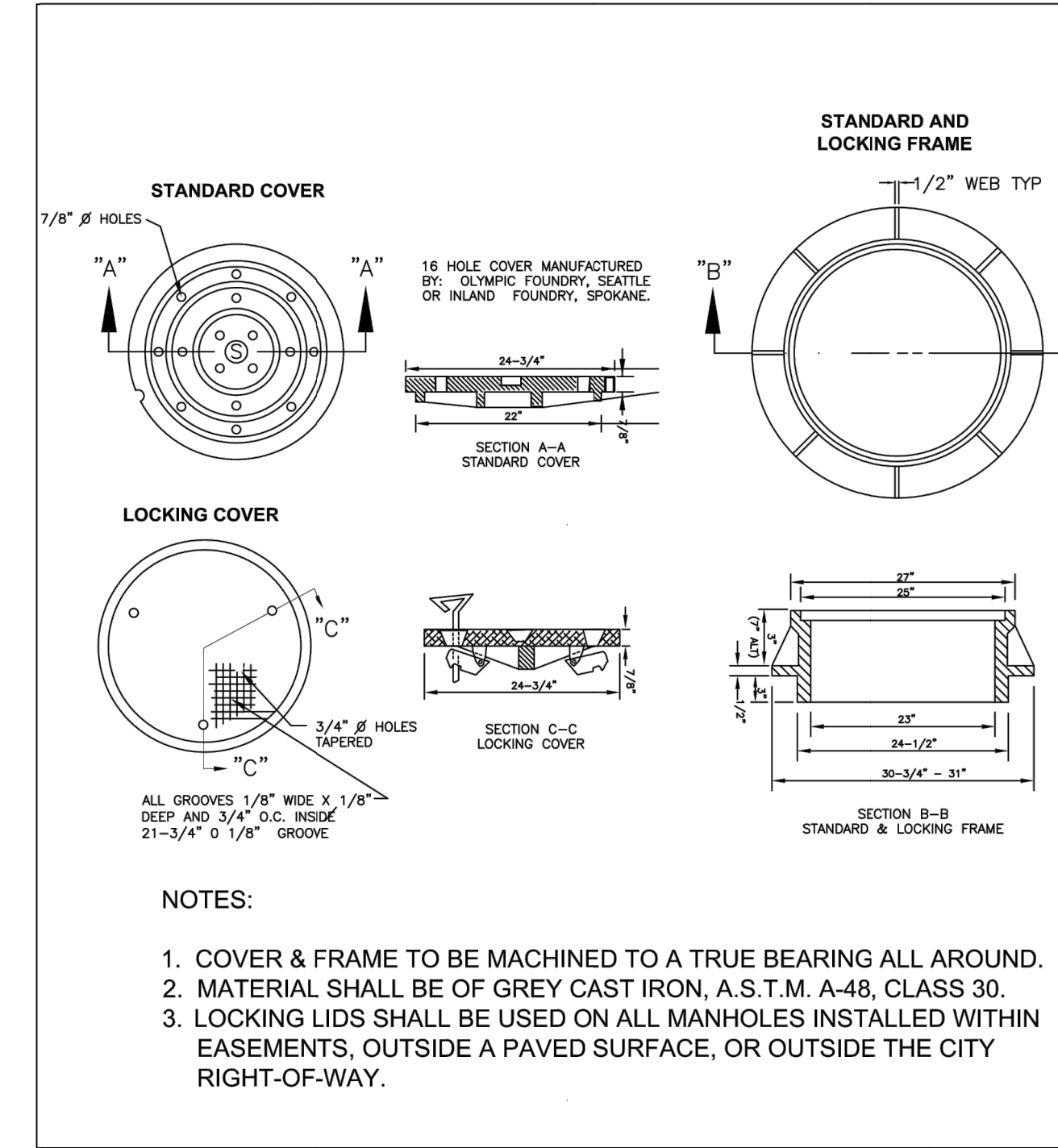
	CITY OF LA CENTER APPROVED				SM-1
	Revisions: DATE: DRAWN: DESIGNED: <i>Bart Stapp, PE 7/23/09</i> CITY ENGINEER DATE				



STANDARD STORM MANHOLE


PLAN #

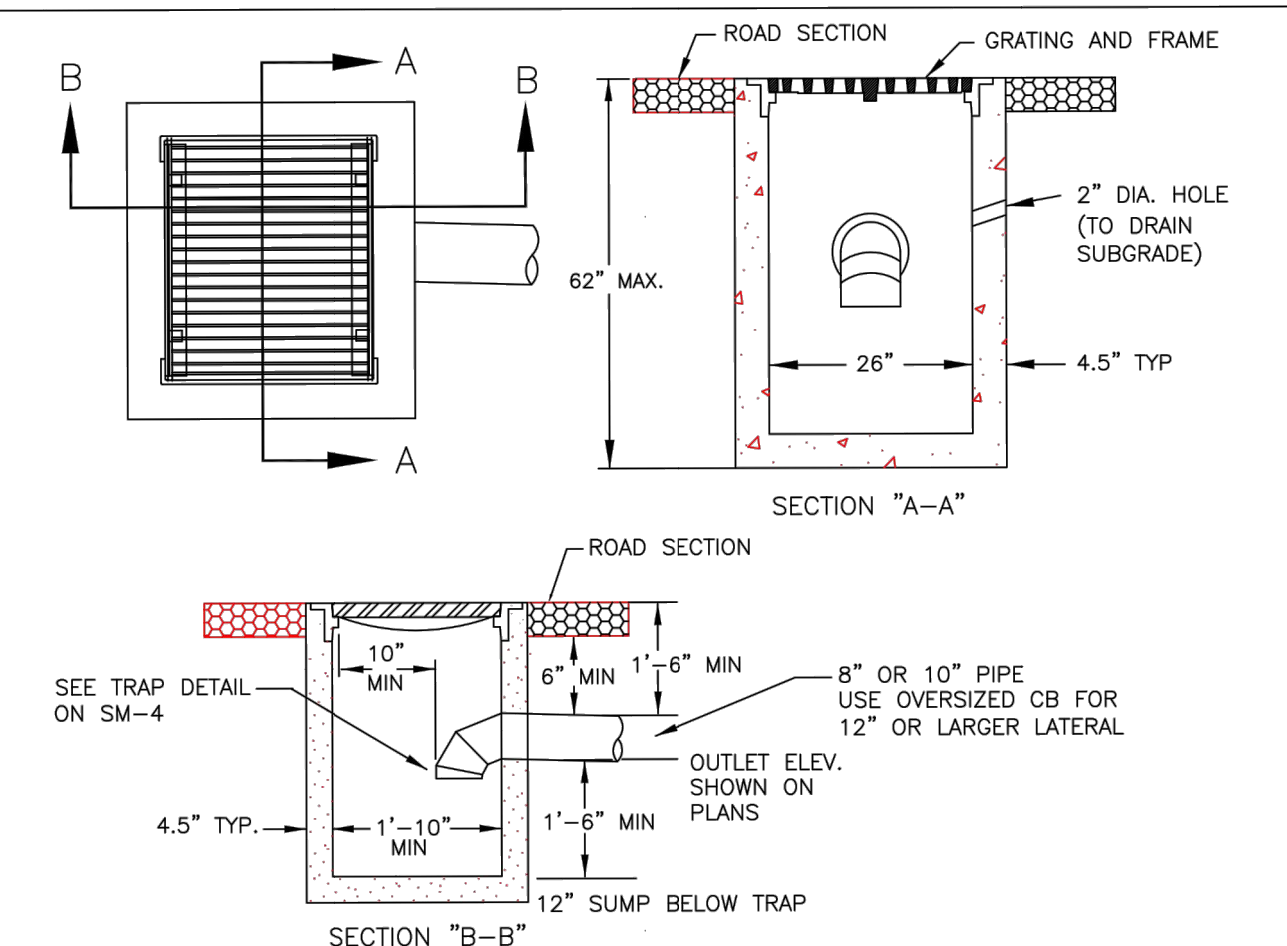
	CITY OF LA CENTER APPROVED				SM-2
	Revisions: DATE: DRAWN: DESIGNED: <i>Bart Stapp, PE 7/23/09</i> CITY ENGINEER DATE				



STANDARD MANHOLE FRAMES & COVERS

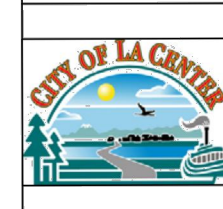
PLAN #

	CITY OF LA CENTER APPROVED				SM-3
	Revisions: DATE: DRAWN: DESIGNED: <i>Bart Stapp, PE 7/23/09</i> CITY ENGINEER DATE				



CATCH BASIN

PLAN #

	CITY OF LA CENTER APPROVED				SM-5
	Revisions: DATE: DRAWN: DESIGNED: <i>Bart Stapp, PE 7/23/09</i> CITY ENGINEER DATE				

SCHEDULE		
D1	STORM DRAIN PIPE	ASTM D-3034, SDR 35, 4'-15"; ASTM F679, PS46, 18" - 48", SIZE PER PLAN. PIPES OVER 12" - CHILD PROTECTION DEVICE AT INFLUENT END.
D2	FITTINGS	SAME MATERIAL CONSTRUCTION & JOINT DESIGN AS PIPE
D3	MANHOLE	PER ASTM C478 WITH CAST IN STEPS
D4	CATCH BASIN / CURB INLET	PER ASTM C478 WITH CAST IN STEPS
D5	FRAME/COVER	GREY CAST IRON, ASTM A-48, CLASS 30. LOCKING COVER WHEN LOCATED WITHIN EASEMENT OR OUTSIDE CITY ROW. CATCH BASIN AND CURB INLETS - STAMPED "DUMP NO WASTE-DRAINS TO STREAM"

1 STORM DRAIN MATERIALS

3/8" = 1'-0"

RE:



PERMIT DRAWINGS

THE INFORMATION CONTAINED HEREIN IS PROPRIETARY. THIS DOCUMENT MAY NOT BE USED OR REPRODUCED WITHOUT THE WRITTEN CONSENT OF JACKOLA ENGR. & ARCH., P.C.

BELLIKA APARTMENTS
EAST 7TH STREET
LA CENTER, WASHINGTON

DRAWN: SLD CHECKED: SLD

DATE: 4/17/20

REVISIONS:

STORM DETAILS AND NOTES

C2.40

- ALL EROSION AND SEDIMENT CONTROL MEASURES SHALL BE IN PLACE AND IN WORKING CONDITION PRIOR TO ANY LAND DISTURBING ACTIVITY CAUSED BY CLEARING OR GRADING. EROSION AND SEDIMENT CONTROL MEASURES SHALL BE APPROVED BY THE CITY PRIOR TO THE COMMENCEMENT OF WORK. THE CONTRACTOR SHALL CALL FOR AN ON-SITE INSPECTION WHEN EROSION AND SEDIMENT CONTROL MEASURES ARE IN PLACE AND PRIOR TO COMMENCEMENT OF WORK.
- THE EROSION AND SEDIMENT CONTROL MEASURES SHALL BE SITED, DESIGNED AND CONSTRUCTED IN ACCORDANCE WITH THE REQUIREMENTS IN THE CITY OF LA CENTER ENGINEERING STANDARDS FOR PUBLIC WORKS CONSTRUCTION.
- THE DEVELOPER IS RESPONSIBLE FOR MAINTAINING EROSION PREVENTION AND SEDIMENT CONTROL MEASURES DURING AND AFTER INSTALLATION OF ALL UTILITY WORK ASSOCIATED WITH UTILITY TRENCHES.
- PRIOR TO ANY SITE EXCAVATION, ALL STORM DRAINAGE INLETS SHALL BE PROTECTED DOWN SLOPE FROM ANY DISTURBED OR CONSTRUCTION AREAS PER THE STANDARD DETAILS TO PREVENT SEDIMENT FROM ENTERING THE STORM DRAINAGE SYSTEM PRIOR TO PERMANENT STABILIZATION OF THE DISTURBED AREAS. CLEAN THE FILTER FABRIC AS NECESSARY TO MAINTAIN DRAINAGE. REMOVE FILTER AND CLEAN CATCH BASINS FOLLOWING COMPLETION OF SITEWORK.
- THE CONTRACTOR SHALL NOT ALLOW SEDIMENT OR DEBRIS TO ENTER NEW OR EXISTING PIPES, CATCH BASINS OR INFILTRATION SYSTEMS.
- NEWLY CONSTRUCTED OR MODIFIED INLETS AND CATCH BASINS ARE TO BE PROTECTED IMMEDIATELY UPON INSTALLATION.
- TEMPORARY SEEDING AND MULCHING OF FILL SLOPES AND DIVERSION DIKES SHALL BE COMPLETED WITHIN ONE WEEK AFTER ROUGH GRADING.
- ALL EXPOSED AND UNWORKED SOILS SHALL BE STABILIZED BY THE APPROPRIATE BEST MANAGEMENT PRACTICES (BMPs), DURING THE PERIOD FROM OCTOBER 1 TO APRIL 30 NO SOIL SHALL BE EXPOSED FOR MORE THAN TWO (2) DAYS. FROM MAY 1 TO SEPTEMBER 30 NO SOIL SHALL BE EXPOSED FOR MORE THAN SEVEN (7) DAYS.
- MATERIAL STOCKPILES ARE TO BE PROTECTED BY THE FOLLOWING MEANS:
-TEMPORARY: COVER PILES WITH TARPS OR PLASTIC SHEETING WEIGHTED WITH CONCRETE BLOCKS, LUMBER OR TIRES.
-PERMANENT: COVER PILES WITH TARPS OR PLASTIC, OR RESEED. PERIMETER AREAS AROUND PILES ARE TO BE SURROUNDED WITH EROSION CONTROL FILTER FABRIC FENCES UNTIL SOIL SURFACE IS STABILIZED WITH RESEEDING.
- THE CONTRACTOR SHALL MAINTAIN ON SITE A WRITTEN DAILY LOG OF EROSION CONTROL BMP MAINTENANCE.
- IF THE CITY INSPECTOR OR ENGINEER HAS EVIDENCE OF POOR CONSTRUCTION PRACTICES OR IMPROPER EROSION PREVENTION BMPs, CITATIONS AND/OR A STOP WORK ORDER SHALL BE ISSUED UNTIL PROPER MEASURES HAVE BEEN TAKEN AND APPROVED BY THE CITY OF LA CENTER. IF THE BMPs APPLIED TO A SITE ARE INSUFFICIENT TO PREVENT SEDIMENT FROM REACHING WATER BODIES, ADJACENT PROPERTIES, OR PUBLIC RIGHT-OF-WAY, THEN THE CITY SHALL REQUIRE ADDITIONAL BMPs.
- ALTERNATIVE BMPs NOT SHOWN IN THESE DETAILS ARE ACCEPTABLE PROVIDED THEY ARE PART OF ECOLOGY'S WESTERN WASHINGTON STORMWATER MANAGEMENT MANUAL AND THE CITY ENGINEER REVIEWS AND APPROVES THE ALTERNATIVE BMPs AS PART OF THE EROSION CONTROL PLAN PRIOR TO THE START OF CONSTRUCTION.

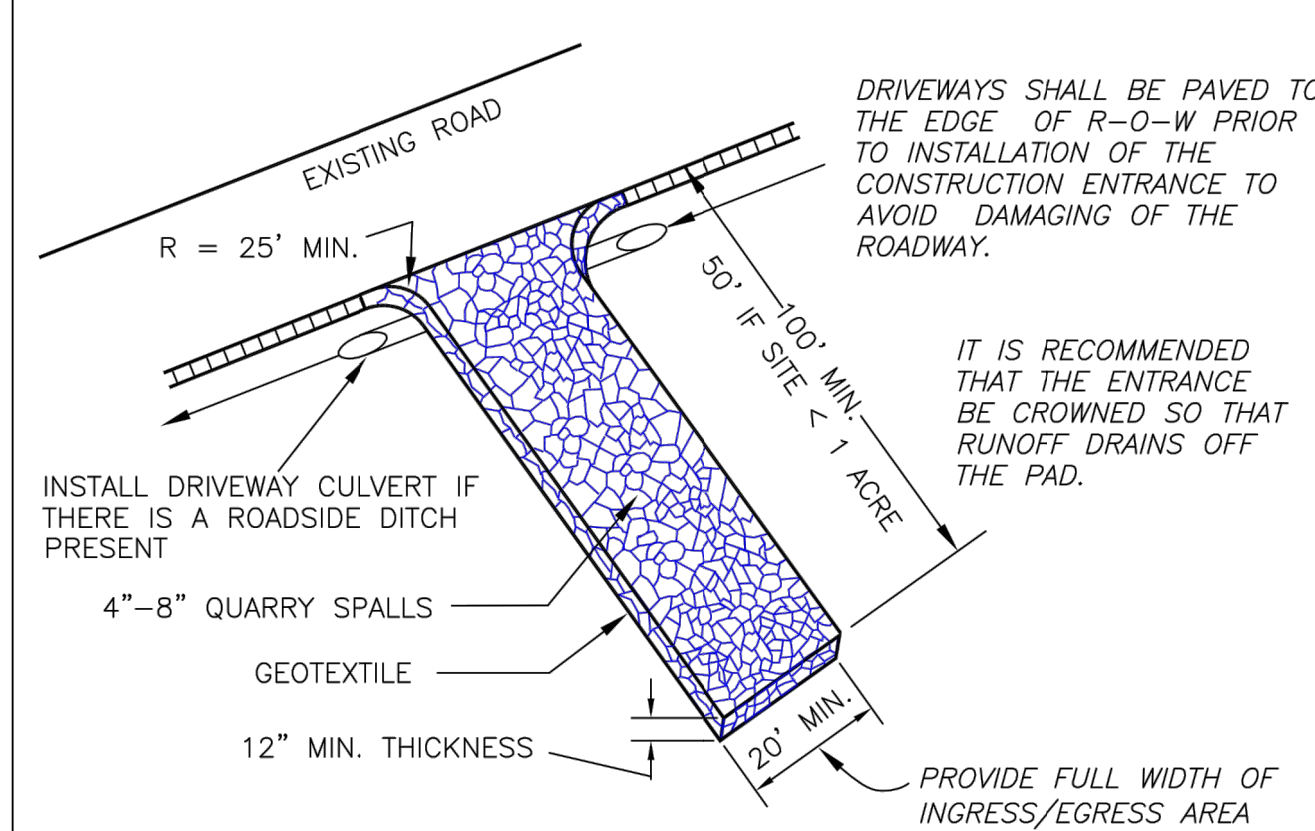
EROSION CONTROL GENERAL NOTES I

CITY OF LA CENTER APPROVED	REVISIONS:	DATE:	DRAWN/DESIGNED:	PLAN #
Barb Stapp, PE 7/23/09				ER-1A
CITY ENGINEER		DATE		

- PROVIDE A 12-INCH DEEP PAD OF CRUSHED ROCK FOR A DISTANCE OF 100 FEET INTO THE SITE FOR ALL ACCESS POINTS UTILIZED BY CONSTRUCTION EQUIPMENT AND TRUCKS. WIDTH OF THE PAD SHALL BE A MINIMUM OF 20 FEET. ALL TRUCKS LEAVING THE SITE SHALL EGRESS ACROSS THE PAD. ACCUMULATED SOIL SHALL BE PERIODICALLY REMOVED, OR ADDITIONAL ROCK SHALL BE PLACED UPON THE PAD SURFACE. ROCK SHALL BE CLEAN 4 INCH TO 8 INCH QUARRY SPALLS. ALL MATERIALS SPILLED, DROPPED, WASHED OR TRACKED FROM VEHICLES ONTO ROADWAYS OR INTO STORM DRAINS MUST BE REMOVED IMMEDIATELY.
- PAVEMENT SWEEPING AND SHOVELING IS REQUIRED. WASHING THE PAVEMENT INTO THE STORM SYSTEM IS NOT PERMITTED.
- AT SITES WITH LESS THAN 1 ACRE OF EXPOSED SOIL, PAD LENGTH MAY BE REDUCED TO 50 FEET. SINGLE FAMILY LOT ENTRANCES MAY HAVE THE PAD LENGTH REDUCED TO 20 FEET.
- INSTALL SEDIMENT FENCE IN ACCORDANCE WITH DETAIL ER-3 PRIOR TO BUILDING CONSTRUCTION AND/OR EXCAVATION TO PREVENT SILT INTRUSION UPON ADJACENT LOTS. IF CONSTRUCTION OCCURS SIMULTANEOUSLY ON ADJACENT LOTS AND THE LOTS HAVE THE SAME OWNER DURING CONSTRUCTION, THE SILT FENCE ALONG THE COMMON LOT LINE MAY BE ELIMINATED.
- CONSTRUCTION ROADS AND PARKING AREAS SHALL BE STABILIZED WHEREVER THEY ARE CONSTRUCTED, WHETHER PERMANENT OR TEMPORARY, FOR THE USE OF CONSTRUCTION TRAFFIC.
- MAINTAIN AND REMOVE ALL SEDIMENT CONTROLS AS SPECIFIED IN THE STANDARD DETAILS. THE CONTRACTOR SHALL REMOVE ALL ACCUMULATED SEDIMENT FROM THE CATCH BASINS, DRYWELLS, UTILITY TRENCHES AND STORM PIPES PRIOR TO ACCEPTANCE BY THE CITY.
- SEDIMENT CONTROL BMPs SHALL BE INSPECTED WEEKLY AND AFTER ANY STORM EVENT PRODUCING RUNOFF. THE INSPECTION FREQUENCY FOR STABILIZED, INACTIVE SITES SHALL BE ONCE EVERY TWO WEEKS OR MORE FREQUENTLY AS DETERMINED BY THE LOCAL PERMITTING AUTHORITY BASED ON THE LEVEL OF SOIL STABILITY AND POTENTIAL FOR ADVERSE ENVIRONMENTAL IMPACTS.
- ALL TEMPORARY EROSION PREVENTION AND SEDIMENT CONTROL MEASURES SHALL BE REMOVED WITHIN 30 DAYS AFTER SITE STABILIZATION IS ACHIEVED OR AFTER TEMPORARY BMPs ARE NO LONGER NEEDED. TRAPPED SEDIMENT SHALL BE REMOVED OR STABILIZED ON SITE. DISTURBED SOIL AREAS RESULTING FROM REMOVAL SHALL BE PERMANENTLY STABILIZED.
- IN AREAS SUBJECT TO SURFACE AND AIR MOVEMENT OF DUST ONE OR MORE OF THE FOLLOWING PREVENTATIVE MEASURES SHALL BE TAKEN FOR DUST CONTROL:
-MINIMIZE THE PERIOD OF SOIL EXPOSURE THROUGH THE USE OF TEMPORARY GROUND COVER AND OTHER TEMPORARY STABILIZATION PRACTICES.
-SPRINKLE THE SITE WITH WATER UNTIL THE SURFACE IS WET.
-SPRAY EXPOSED SOIL AREAS WITH A DUST PALLIATIVE. NOTE: USE OF PETROLEUM PRODUCTS OR POTENTIALLY HAZARDOUS MATERIALS ARE PROHIBITED.
- EXPOSED SURFACES THAT WILL NOT BE BROUGHT TO FINAL GRADING OR GIVEN A PERMANENT COVER TREATMENT WITHIN 30 DAYS OF THE EXPOSURE SHALL HAVE SEED MIX AND MULCH PLACED TO STABILIZE THE SOIL AND REDUCE EROSION/SEDIMENTATION. SEEDING AREAS SHALL BE CHECKED REGULARLY TO ASSURE A GOOD STAND OF GRASS IS BEING MAINTAINED. AREAS THAT FAIL TO ESTABLISH VEGETATION COVER ADEQUATE TO PREVENT EROSION WILL BE RESEED AS SOON AS SUCH AREAS ARE IDENTIFIED.
- APPLY AN APPROVED TEMPORARY SEEDING MIXTURE TO THE PREPARED SEED BED AT A RATE OF 120 LBS./ACRE. NOTE: "HYDROSEEDING" APPLICATIONS WITH APPROVED SEED-MULCH-FERTILIZER MIXTURES MAY ALSO BE USED.

EROSION CONTROL GENERAL NOTES II

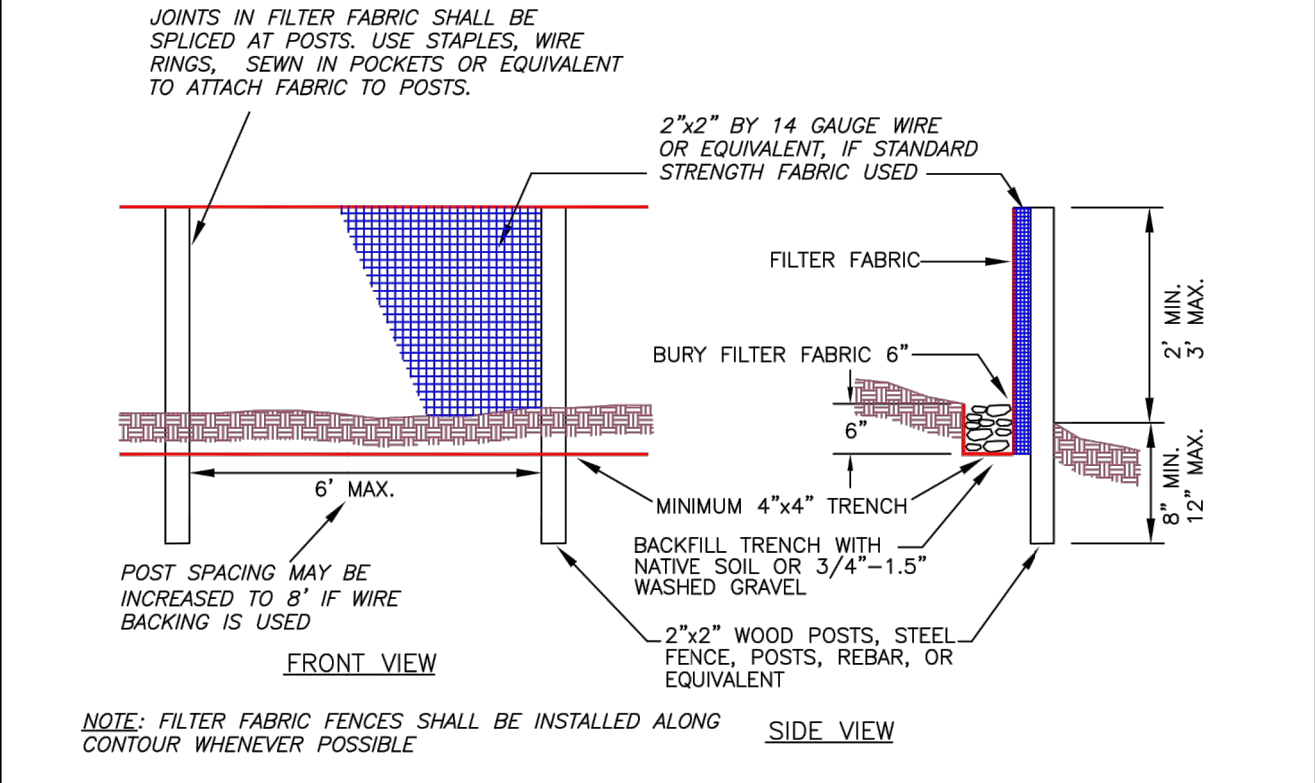
CITY OF LA CENTER APPROVED	REVISIONS:	DATE:	DRAWN/DESIGNED:	PLAN #
Barb Stapp, PE 7/23/09				ER-1B
CITY ENGINEER		DATE		



- NOTES:**
- IF THE ENTRANCE SITS ON A SLOPE, PLACE A FILTER FABRIC FENCE DOWN GRADIENT.
 - TOP DRESS THE PAD WITH CLEAN 3" MINUS ROCK WHEN THE CONSTRUCTION ENTRANCE BECOMES CLOGGED WITH SEDIMENTS.
 - ANY SEDIMENT CARRIED FROM THE SITE ONTO THE STREET SHALL BE CLEANED UP IMMEDIATELY.
 - IF EQUIPMENT TRAVELS EXTENSIVELY ON UNSTABILIZED ROADS ON THE SITE, A TIRE AND VEHICLE UNDERCARRIAGE WASH NEAR THE ENTRANCE WILL BE NEEDED. PERFORM WASHING ON CRUSHED ROCK. WASH WATER WILL REQUIRE TREATMENT IN A SEDIMENT POND OR TRAP.

STANDARD CONSTRUCTION ENTRANCE

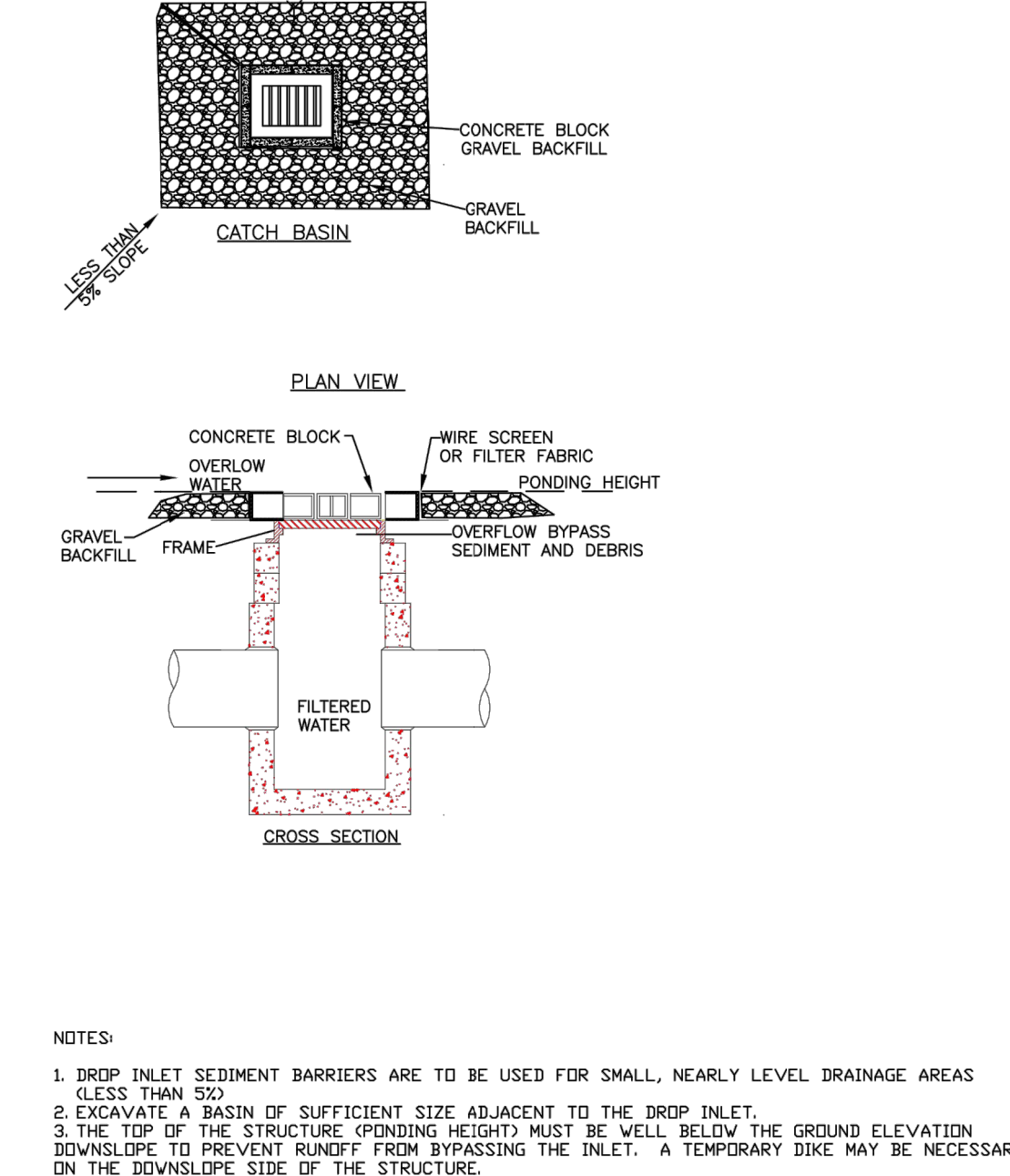
CITY OF LA CENTER APPROVED	REVISIONS:	DATE:	DRAWN/DESIGNED:	PLAN #
Barb Stapp, PE 7/23/09				ER-2
CITY ENGINEER		DATE		



- MAINTENANCE STANDARDS:**
- SILT FENCES AND FILTER BARRIERS SHALL BE INSPECTED IMMEDIATELY AFTER EACH RAINFALL AND AT LEAST DAILY DURING PROLONGED RAINFALL. ANY REQUIRED REPAIRS SHALL BE MADE IMMEDIATELY.
 - IF CONCENTRATED FLOWS ARE EVIDENT UPHILL OF THE FENCE, THEY MUST BE INTERCEPTED AND CONVEYED TO A SEDIMENT POND.
 - IT IS IMPORTANT TO CHECK THE UPHILL SIDE OF THE FENCE FOR SIGNS OF THE FENCE CLOGGING AND ACTING AS A BARRIER TO FLOW AND THEN CAUSING CHANNELIZATION OF FLOWS PARALLEL TO THE FENCE. IF THIS OCCURS, REPLACE THE FENCE OR REMOVE THE TRAPPED SEDIMENT.
 - SEDIMENT DEPOSITS SHALL EITHER BE REMOVED WHEN THE DEPOSIT REACHES APPROXIMATELY ONE-THIRD THE HEIGHT OF THE SILT FENCE, OR A SECOND SILT FENCE SHALL BE INSTALLED.
 - SHOULD THE FABRIC ON A SILT FENCE DECOMPOSE OR BECOME INEFFECTIVE PRIOR AND THE BARRIER IS STILL NECESSARY, THE FABRIC SHALL BE REPLACED IMMEDIATELY.
 - ANY SEDIMENT DEPOSITS REMAINING IN PLACE AFTER THE SILT FENCE OR FILTER BARRIER IS NO LONGER REQUIRED SHALL BE DRESSED TO CONFORM WITH THE EXISTING GRADE, PREPARED AND SEED.

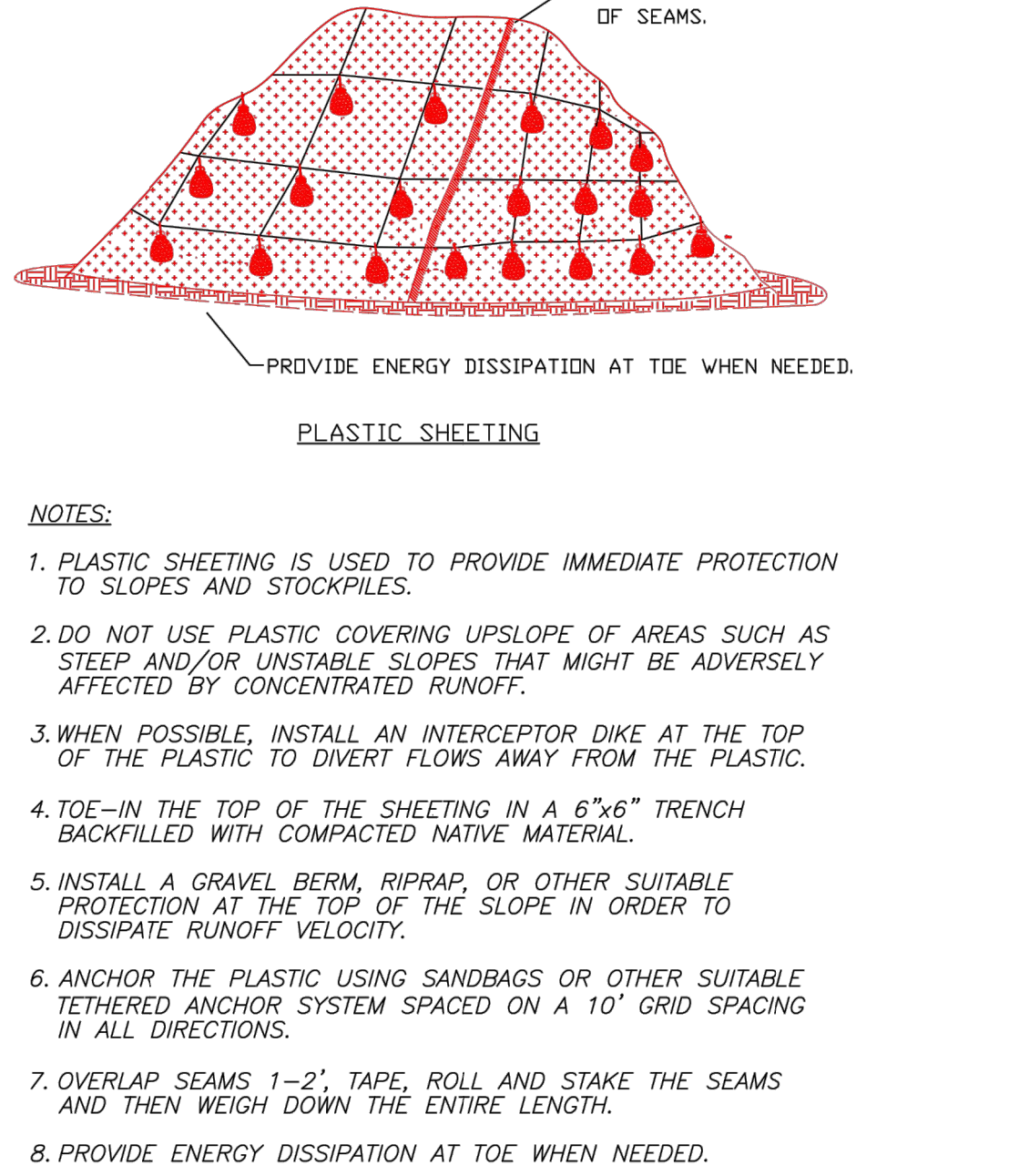
FILTER FABRIC FENCE

CITY OF LA CENTER APPROVED	REVISIONS:	DATE:	DRAWN/DESIGNED:	PLAN #
Barb Stapp, PE 7/23/09				ER-3
CITY ENGINEER		DATE		



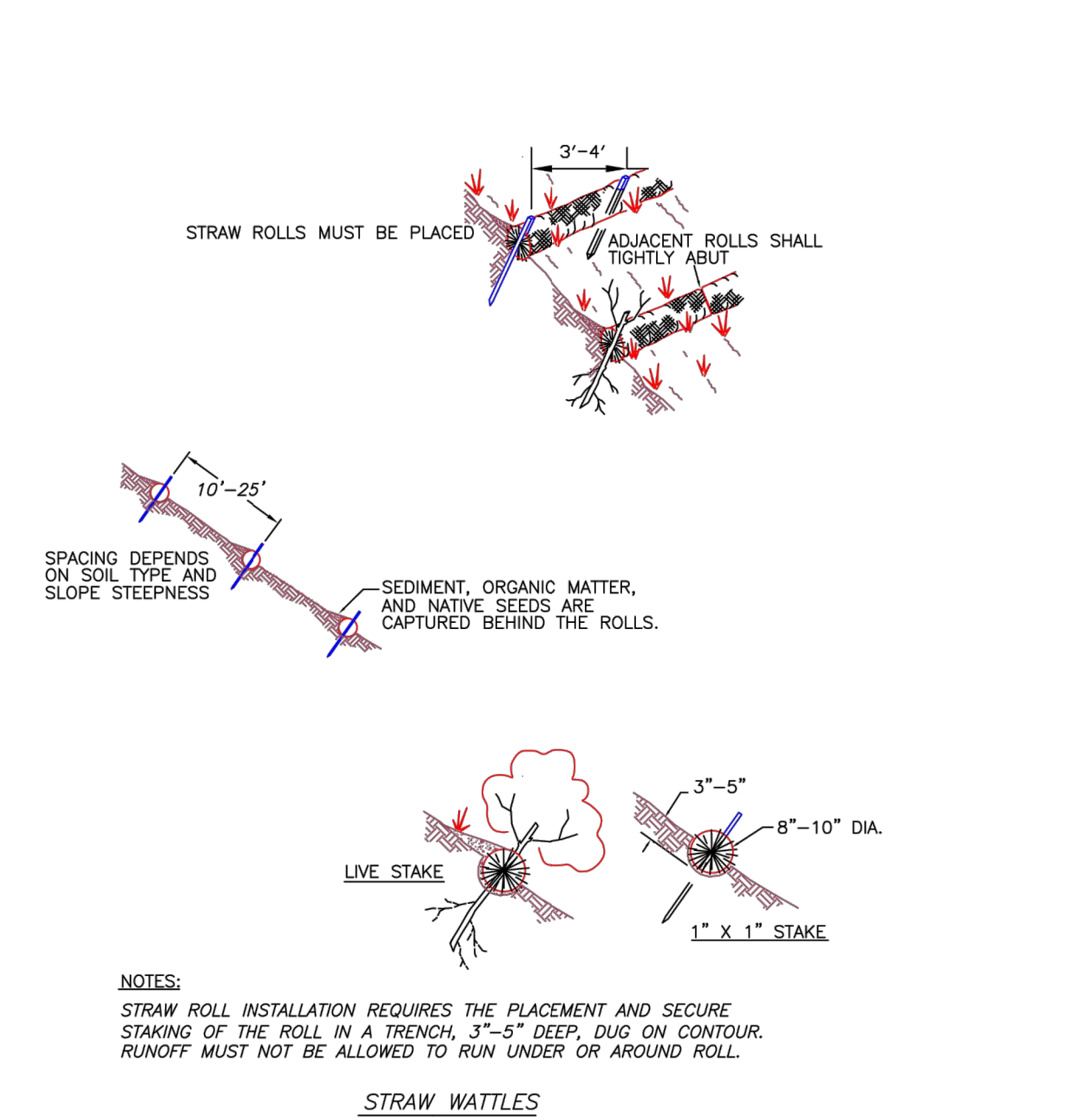
BLOCK AND GRAVEL INLET PROTECTION

CITY OF LA CENTER APPROVED	REVISIONS:	DATE:	DRAWN/DESIGNED:	PLAN #
Anthony Deolopez				ER-4
CITY ENGINEER		DATE		



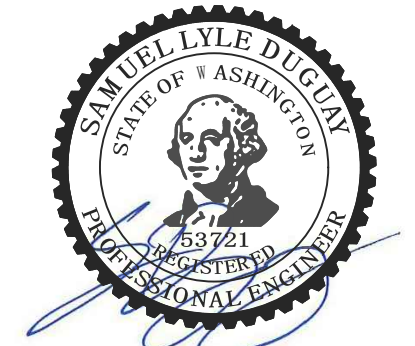
PLASTIC SHEETING

CITY OF LA CENTER APPROVED	REVISIONS:	DATE:	DRAWN/DESIGNED:	PLAN #
Barb Stapp, PE 7/23/09				ER-6
CITY ENGINEER		DATE		



STRAW WATTLES BARRIER

CITY OF LA CENTER APPROVED	REVISIONS:	DATE:	DRAWN/DESIGNED:	PLAN #
Anthony Deolopez				ER-7
CITY ENGINEER		DATE		



PERMIT DRAWINGS

THE INFORMATION CONTAINED HEREIN IS PROPRIETARY. THIS DOCUMENT MAY NOT BE USED OR REPRODUCED WITHOUT THE WRITTEN CONSENT OF JACKOLA ENGR. & ARCH., P.C.

BELLIKKA APARTMENTS
EAST 7TH STREET
LA CENTER, WASHINGTON

DRAWN: SLD CHECKED: SLD
DATE: 4/17/20

REVISIONS:

EROSION CONTROL DETAILS AND NOTES

C2.50