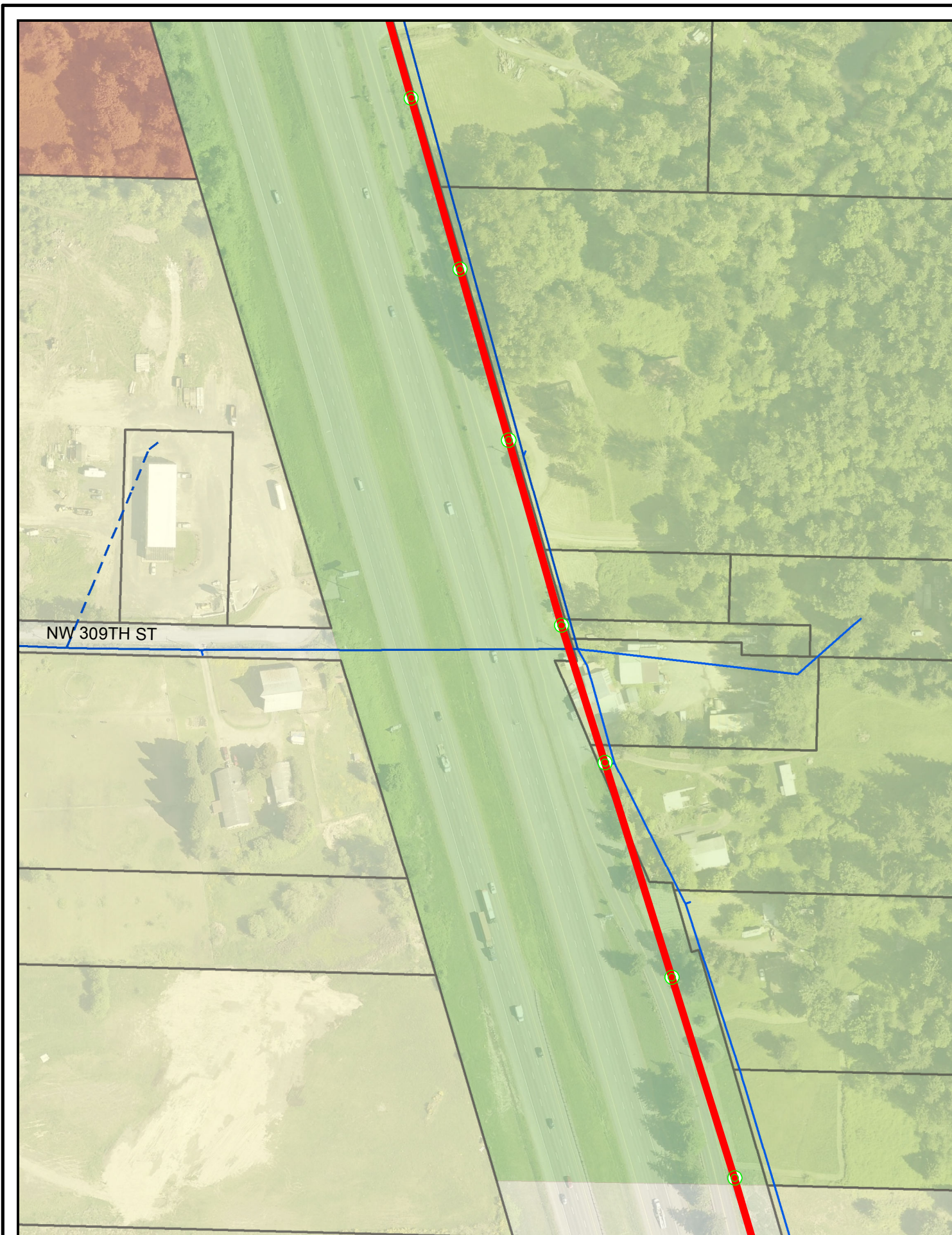
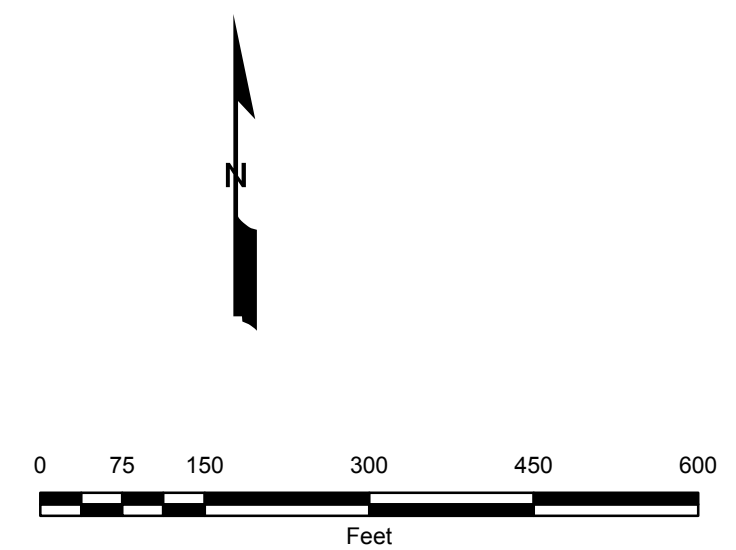


Clark Public Utilities	
ENTERPRISE TRANSMISSION LINE LA CENTER - OVERVIEW	
DATE: 8/19/2016	SHEET# 1 of 4

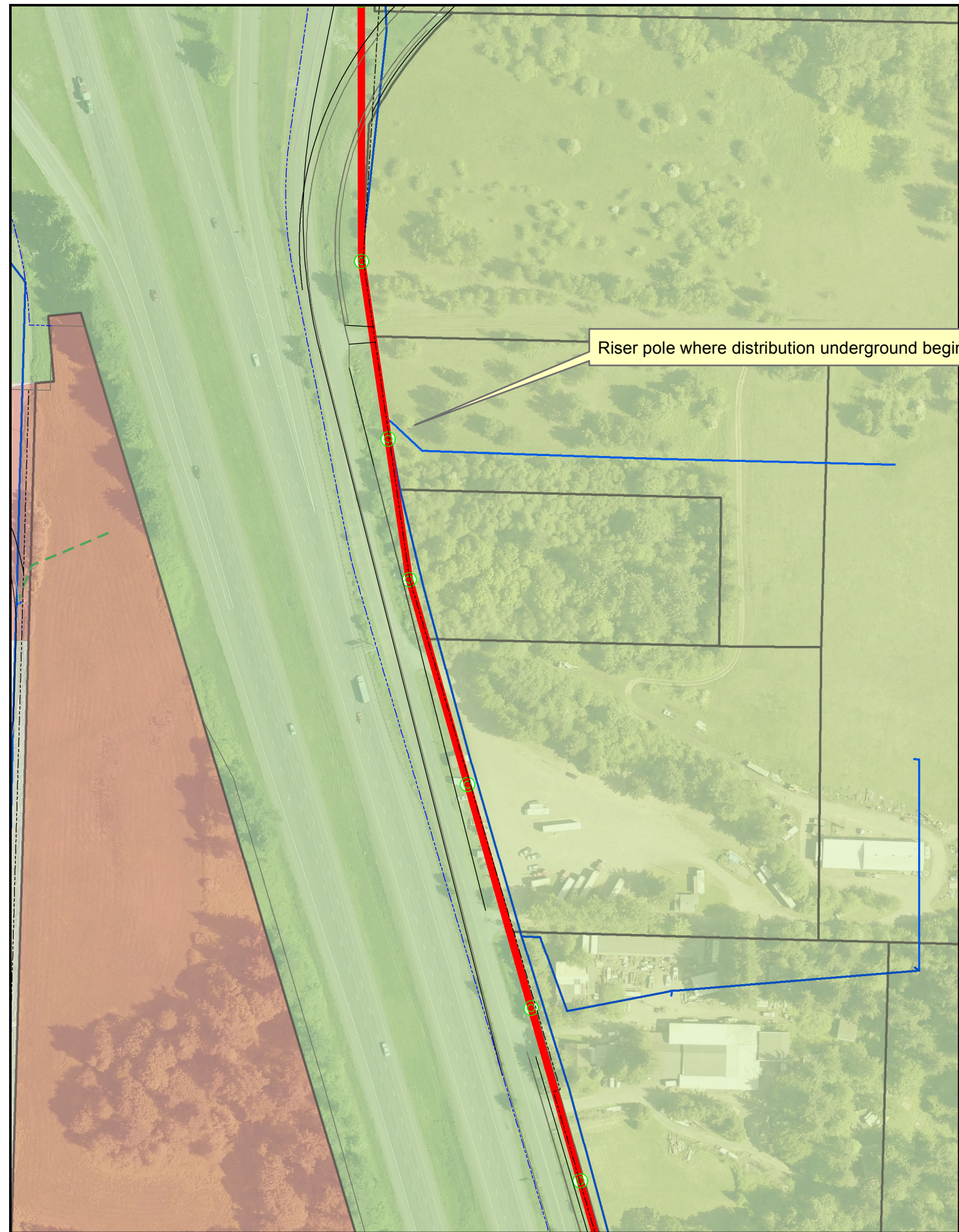


New poles to follow alignment of existing overhead distribution line along unimproved Paradise Park Rd.
 Majority of poles in this section located in road right of way.



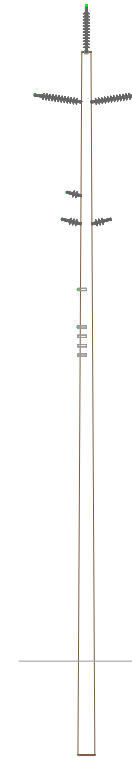
- Proposed transmission line alignment
- ⊙ Proposed transmission pole
- Existing Distribution line

Clark Public Utilities	
ENTERPRISE TRANSMISSION LINE	
LA CENTER - PARADISE PARK RD	
DATE: 8/19/2016	SHEET# 2 of 4

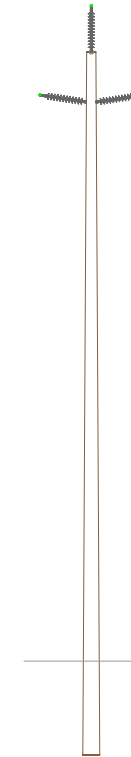


New poles to follow alignment of existing overhead distribution line along unimproved Paradise Park Rd. Majority of poles in this section located in road right of way.

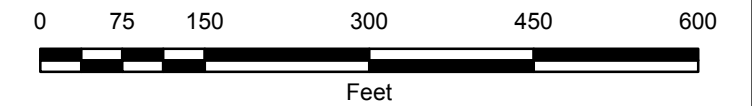
Distribution and communications lines convert to underground at start of new Paradise Park Rd alignment.



Pole with transmission & distribution

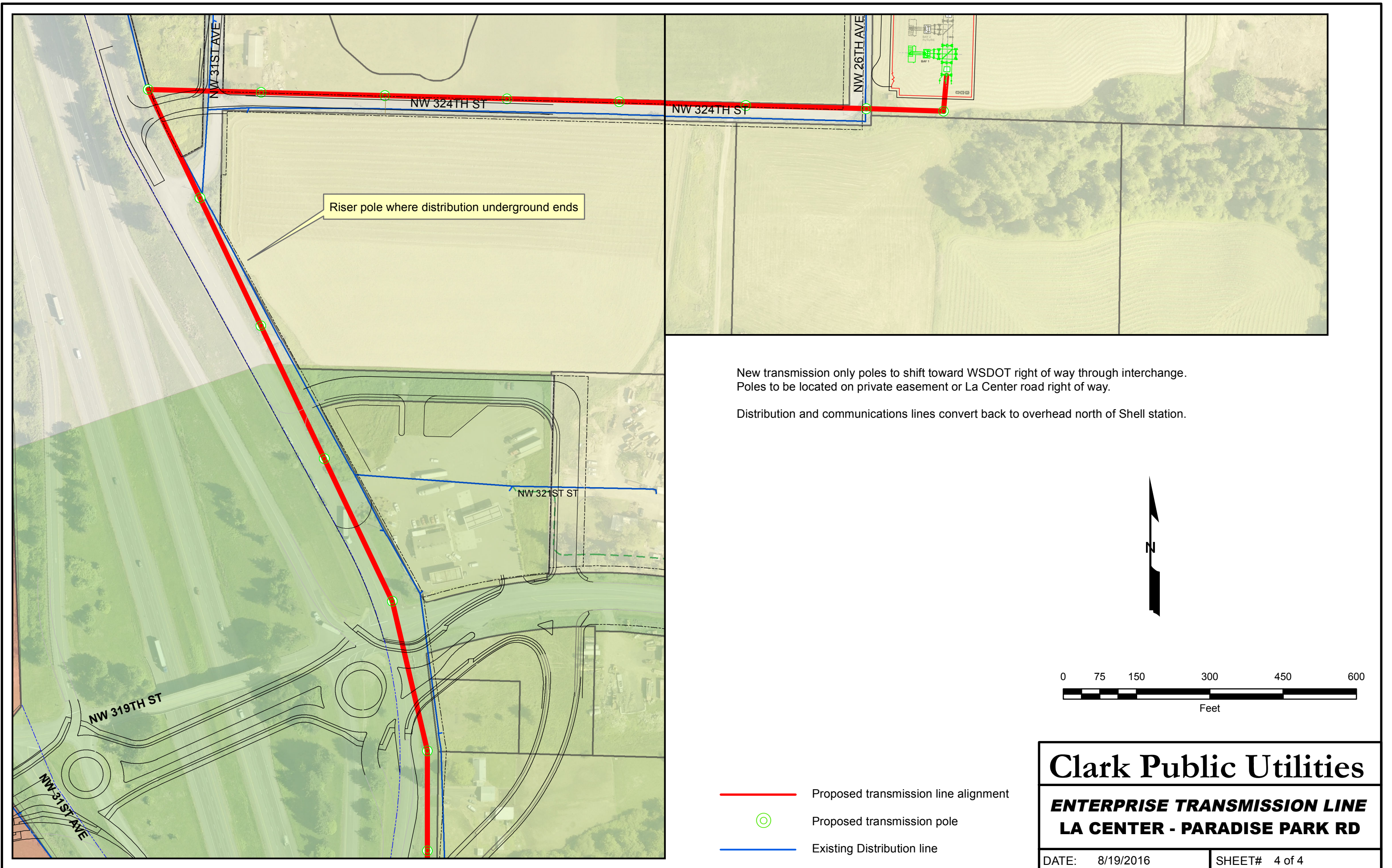


Pole with transmission only



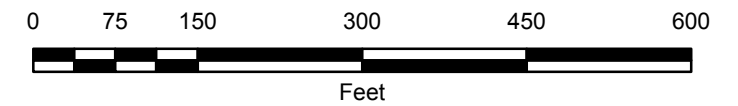
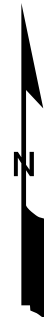
- Proposed transmission line alignment
- ⊙ Proposed transmission pole
- Existing Distribution line

Clark Public Utilities	
ENTERPRISE TRANSMISSION LINE	
LA CENTER - PARADISE PARK RD	
DATE: 8/19/2016	SHEET# 3 of 4



New transmission only poles to shift toward WSDOT right of way through interchange.
 Poles to be located on private easement or La Center road right of way.

Distribution and communications lines convert back to overhead north of Shell station.



- Proposed transmission line alignment
- ⊙ Proposed transmission pole
- Existing Distribution line

Clark Public Utilities	
ENTERPRISE TRANSMISSION LINE	
LA CENTER - PARADISE PARK RD	
DATE: 8/19/2016	SHEET# 4 of 4