

**NOTES:**

THE MAJORITY OF STORMWATER RUNOFF GENERATED FROM THE PROJECT SITE WILL BE TREATED AND DETAINED ON THE SITE.

STORMWATER RUNOFF FROM THE PROPOSED DEVELOPMENT WILL BE TREATED WITH THE USE OF A WETPOND PRIOR TO RELEASE FROM THE SITE.

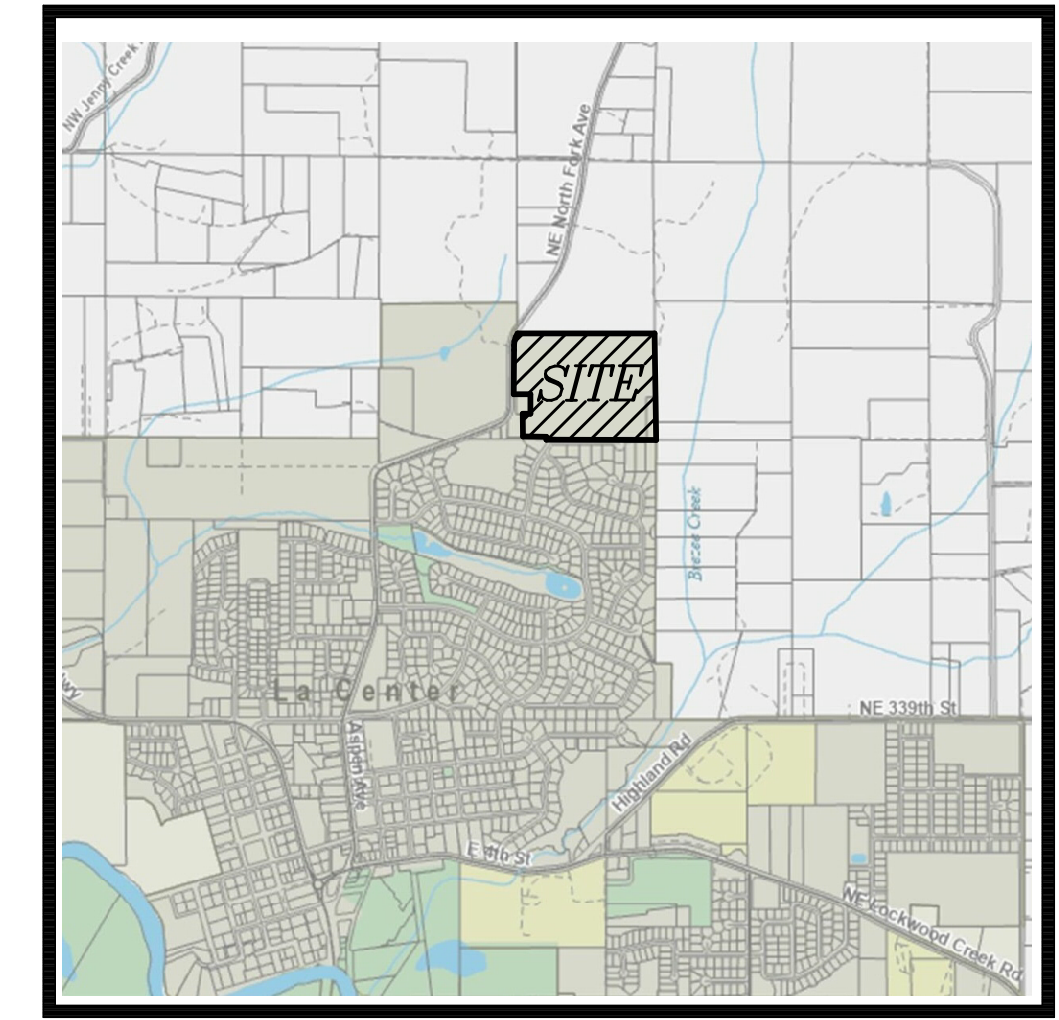
STORMWATER RUNOFF FROM THE PROPOSED DEVELOPMENT WILL BE DETAINED WITH THE USE OF A SURFACE DETENTION POND TO LIMIT THE PEAK DISCHARGE RATES LEAVING THE SITE.

MUCH OF THE EXISTING SITE RUNOFF PRESENTLY DRAINS SOUTH TO THE EXISTING "SOUTHVIEW HEIGHTS PHASE 8" DEVELOPMENT & EXISTING E. 24th CIR. THE SOUTHERLY PORTION OF PROPOSED "VINEYARD VISTA" WILL CONTINUE TO DRAIN IN THIS MANNER. HOWEVER, MUCH OF THE AREA THAT NOW DRAINS TO "SOUTHVIEW HEIGHTS PHASE 8" IS PROPOSED TO BE INTERCEPTED AND CONVEYED TO THE PROPOSED STORMWATER FACILITY FOR THE PROJECT SITE.

A STORMWATER PIPE SYSTEM HAS BEEN PROPOSED FOR THE SOUTHERN PORTION OF THE PROJECT SITE TO BETTER FACILITATE RUNOFF FROM THE SITE INTO THE "SOUTHVIEW HEIGHTS PHASE 8" STORM SYSTEM.

THE DESIGN AND CONSTRUCTION OF THE STORMWATER FACILITIES FOR THE "SOUTHVIEW HEIGHTS" PROJECT ACCOUNTED FOR THE EXISTING STORMWATER RUNOFF FROM THE PREVIOUSLY MENTIONED AREA AND PROVIDES THE NECESSARY CONVEYANCE, TREATMENT, AND DETENTION.

**OWNER/APPLICANT:**  
**CHINOOKAN, LLC**  
 P.O. BOX 886  
 LA CENTER, WA 98629  
**CONTACT: LINCOLN WOLVERTON**  
 360-606-8986  
 lincolnwolverton@hotmail.com



**VICINITY MAP**



**TRACT B  
 OPEN SPACE  
 (Contains Some  
 Critical Areas)**

**WETPOND (SINGLE CELL)**  
 WETPOND FLOOR EL. = 393.0'  
 WETPOND SURFACE EL. = 400.0'  
 SEDIMENT STORAGE VOL. (11) = 11,600 CU. FT.  
 WATER STORAGE VOL. = 99,100 CU. FT.  
**DETENTION POND**  
 LIVE STORAGE EL. = 400.0'  
 LIVE STORAGE MAX. SURFACE EL. = 408.0'  
 LIVE STORAGE MAX. VOL. = 220,700 CU. FT.

**MATCH LINE**

**MATCH LINE**



**THE WOLFE GROUP, L.L.C.**  
 Land Planning, Consulting  
 & Civil Engineering  
 2401 W. Main Street, Suite 210  
 Battle Ground, WA 98604  
 (360) 687-2699  
 Engineer of Record: Jeff Whitten (34482)  
 Email: jeff@wolfe-group.com

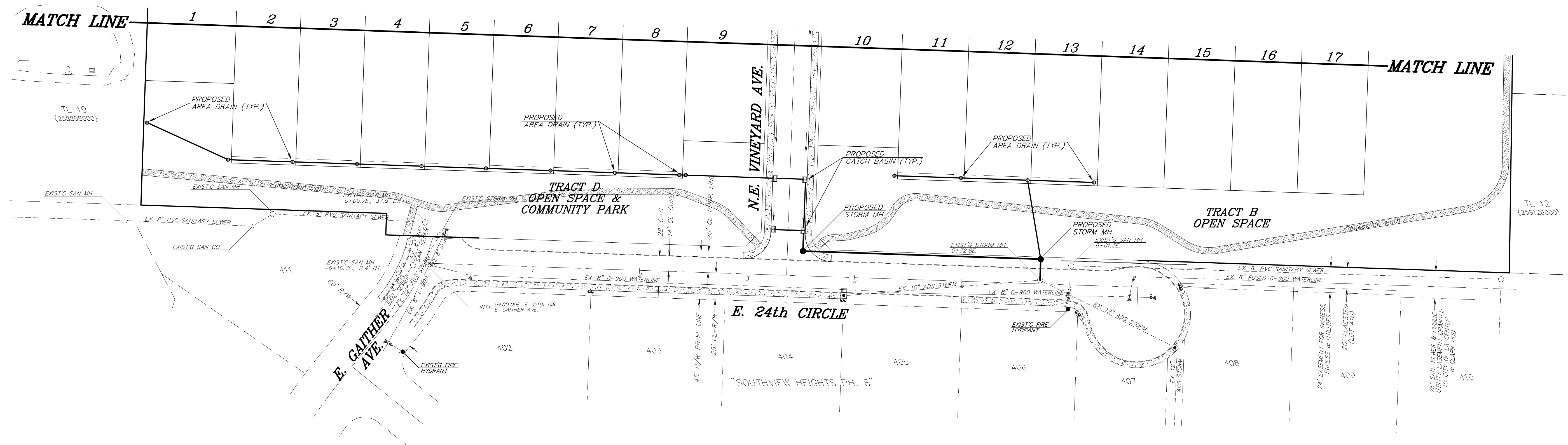
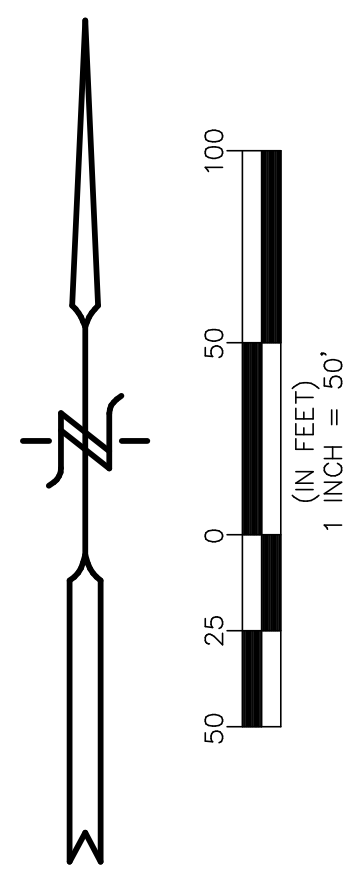
**VINEYARD VISTA**  
 A Residential Subdivision in the N.E.  
 1/4 of Section 34 T.5N., R.1E., W.M. in  
 the City of La Center, Clark County, WA

**PRELIMINARY  
 STORMWATER PLAN**

JOB #: 23-01  
 DESIGNED: JEW  
 DRAWN: JEW  
 APPROVED: JEW  
 DATE: NOV. 2023  
 SCALE: HORIZ.: 1" = 50'  
 VERT.: N/A  
 SHEET

1  
 2





**THE WOLFE GROUP, L.L.C.**  
 Land Planning, Consulting  
 & Civil Engineering  
 2401 W. Main Street, Suite 210  
 Battle Ground, WA 98604  
 (360) 667-2699  
 Engineer of Record: Jeff Whitte (34482)  
 Email: jeff@wolfe-group.com

**VINEYARD VISTA**  
 A Residential Subdivision in the N.E.  
 1/4 of Section 34 T.5N., R.1E., W.M. in  
 the City of La Center, Clark County, WA

**PRELIMINARY  
 STORMWATER PLAN**

JOB #: 23-01  
 DESIGNED: JEW  
 DRAWN: JEW  
 APPROVED: JEW  
 DATE: NOV. 2023  
 SCALE: HORIZ.: 1"=50' VERT.: N/A

SHEET

2 / 2