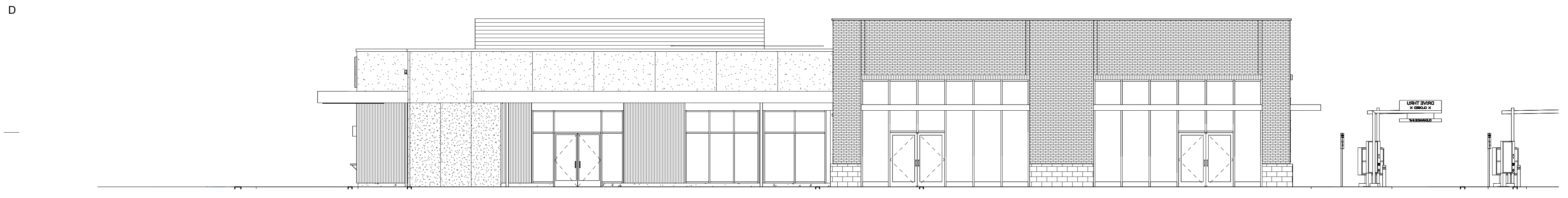
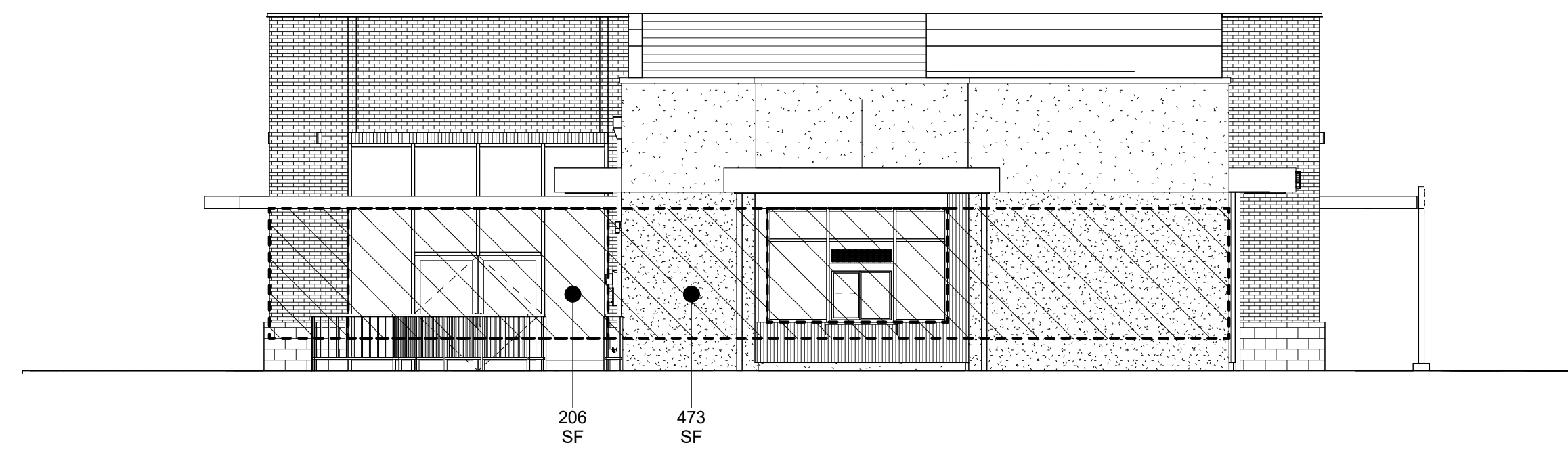


1 Elevation North
 SCALE | 1/8" = 1'-0"

40% GLAZING REQUIRED - TOTAL WALL AREA = 473 SF (040 * 473 = 189 SF); TOTAL STREET FACING GLAZING PROVIDED = 206 SF;

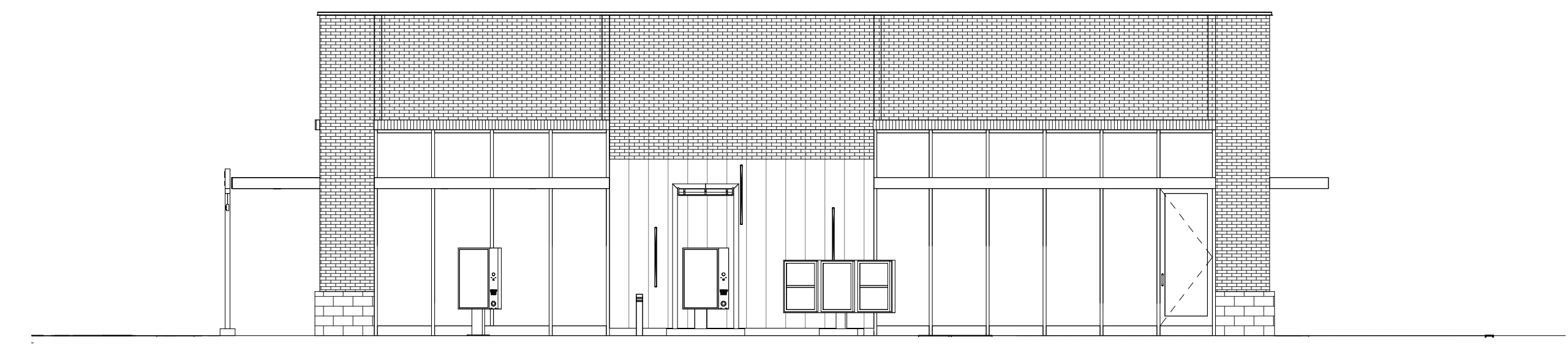


2 Elevation South
 SCALE | 1/8" = 1'-0"



3 Elevation West
 SCALE | 1/8" = 1'-0"

40% GLAZING REQUIRED - TOTAL WALL AREA = 473 SF (040 * 473 = 189 SF); TOTAL STREET FACING GLAZING PROVIDED = 206 SF;



4 Elevation East
 SCALE | 1/8" = 1'-0"