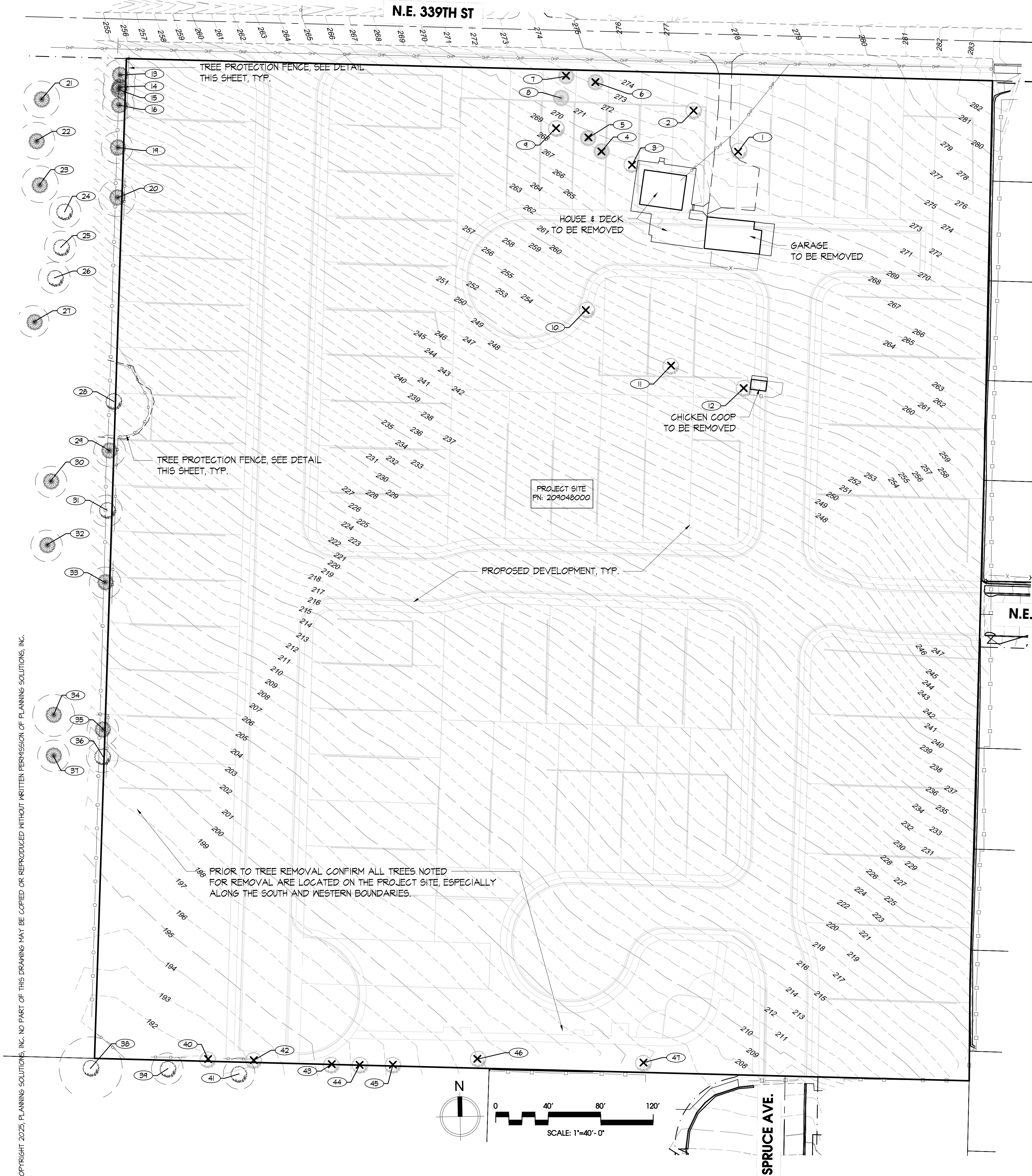


© COPYRIGHT 2025, PLANNING SOLUTIONS, INC. NO PART OF THIS DRAWING MAY BE COPIED OR REPRODUCED WITHOUT WRITTEN PERMISSION OF PLANNING SOLUTIONS, INC.



EXISTING TREE MATRIX						
#	TREE SPECIES	DBH1	RPZ2	CONDITION	RETAIN (R) REMOVE (X)	COMMENTS
1	Maple	30"	30'	fair	X	proposed site grading impacts tree
2	Dogwood	6"	12'	fair	X	proposed site grading impacts tree
3	Redbud	12"	12'	fair	X	proposed site grading impacts tree
4	Cedar	18"	18'	fair	X	proposed site grading impacts tree
5	Cedar	24"	24'	fair	X	proposed site grading impacts tree
6	Cedar	26"	26'	fair	X	proposed site grading impacts tree
7	Cedar (2)	18"	18'	fair	X	proposed site grading impacts tree
8	Fir	20"	20'	fair	X	proposed site grading impacts tree
9	Birch	17"	17'	poor	X	proposed site grading impacts tree
10	Pear	22"	22'	fair	X	proposed site grading impacts tree
11	dead tree	12"	n/a	dead	X	proposed site grading impacts tree
12	Coffeeberry	6"	12'	fair	X	proposed site grading impacts tree
13	Fir	8"	12'	fair	R	offsite
14	Fir	6"	12'	fair	R	offsite
15	Fir	6"	12'	fair	R	offsite
16	Fir	11"	12'	fair	R	offsite
17	not used					
18	not used					
19	Fir	10"	12'	fair	R	offsite
20	Fir	14"	14'	fair	R	offsite
21	Fir	14"	14'	fair	R	offsite
22	Fir	14"	14'	fair	R	offsite
23	Fir	14"	14'	fair	R	offsite
24	Maple	6"	12'	fair	R	offsite
25	Maple	6"	12'	fair	R	offsite
26	Birch	6"	12'	fair	R	offsite
27	Fir	14"	14'	fair	R	offsite
28	Oregon White Oak	34"	34'	fair	R	offsite
29	Fir	11"	12'	fair	R	offsite
30	Fir	14"	14'	fair	R	offsite
31	Coffeeberry	6"	12'	fair	R	offsite
32	Fir	14"	14'	fair	R	offsite
33	Fir	9"	12'	fair	R	offsite
34	Fir	16"	16'	fair	R	offsite
35	Fir	6"	12'	fair	R	offsite
36	Coffeeberry	3"	12'	fair	R	offsite
37	Fir	14"	14'	fair	R	offsite
38	Willow	24"	24'	fair	R	offsite
39	Maple	12"	12'	fair	R	offsite
40	Willow	12"	12'	fair	X	confirm onsite before removal
41	Coffeeberry	12"	12'	fair	R	offsite
42	Coffeeberry	12"	12'	fair	X	confirm onsite before removal
43	Willow	12"	12'	fair	X	confirm onsite before removal
44	Willow	12"	12'	fair	X	confirm onsite before removal
45	Cottonwood	14"	14'	fair	X	confirm onsite before removal
46	Maple	16"	16'	fair	X	confirm onsite before removal
47	Cherry	14"	14'	fair	X	confirm onsite before removal

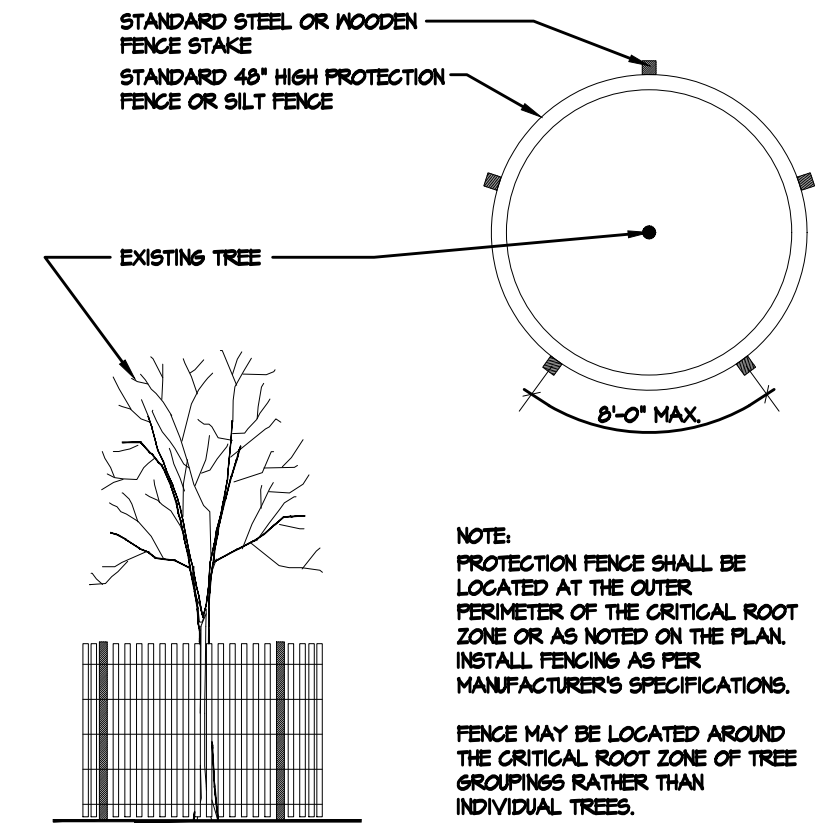
*Diameter at Breast Height
**Root Protection Zone (12' radius minimum)

SITE STATISTICS	
11.6± AC	SITE AREA
19	NUMBER OF JURISDICTIONAL TREES TO BE REMOVED
19	NUMBER OF JURISDICTIONAL TREES ON SITE

SYMBOL LEGEND	
SYMBOL	DESCRIPTION
	EXISTING TREE TO REMAIN
	EXISTING TREE TO BE REMOVED
	CRITICAL ROOT ZONE AREA
	TREE PROTECTION FENCE LOCATION (4' CHAIN LINK, ORANGE PVC FENCE OR SILT FENCE) (ALSO DENOTES AREA WHERE NO IMPACTS TO CRITICAL ROOT ZONE SHALL OCCUR). SEE DETAIL THIS SHEET.

TREE PROTECTION TIME LINE & NARRATIVE	
EXISTING ON-SITE AND OFF-SITE TREE LOCATIONS AND SIZES HAVE BEEN OBTAINED VIA SURVEY INFORMATION AND SITE OBSERVATIONS.	
19 EXISTING TREES WITHIN THE PROJECT BOUNDARY ARE PROPOSED TO BE REMOVED DUE TO CONFLICTS WITH THE PROPOSED SITE GRADING, ROAD, AND DRIVEWAY IMPROVEMENTS.	
TREE PROTECTION FENCING SHALL BE PLACED AS SHOWN TO PROTECT THE EXISTING TREES NOTED FOR RETENTION.	
TREE PROTECTION / EROSION CONTROL FENCING SHALL BE ESTABLISHED PRIOR TO EXCAVATION. IT IS RECOMMENDED TO BE INSTALLED AT THE SAME TIME EROSION CONTROL MEASURES ARE INSTALLED. WHERE TREE FENCE AND EROSION CONTROL FENCE ARE LOCATED AT THE SAME LOCATION, EROSION FENCE THEN SERVES AS TREE PROTECTION FENCE. SEE DETAIL THIS SHEET.	

TREE PROTECTION NOTES	
1) No person may conduct any of the following activities within the drip line of the trees designated to remain including, but not limited to: parking equipment, fueling, servicing equipment, placing solvents, storing building material and soil deposits, dumping concrete washout and locating burn holes.	
2) During construction, no person shall attach any object to the trees designated for protection.	
3) The contractor shall follow the grading plan provided by the project civil engineer. Grading activities shall be conducted in a manner to minimize the impacts to the trees marked for preservation.	
4) The excavator shall keep a sharp pair of loppers and a sharp 12" pruning saw accessible on-site during grading operations. Any roots larger than 1/2" shall be pruned to the face of the cut (using a sharp pair of loppers or a sharp 12" pruning saw) and shall not be torn from the ground by mechanical excavation.	
5) Special care shall be exercised in working within 20 feet of the trees to be retained. This includes hand excavating the roots at the edge of the excavation and cutting roots with a lopper or pruning saw. Pruning the roots at the edge of excavation will minimize breakage of healthy roots beyond the edge of the proposed excavation.	
6) Except for the proposed improvements shown within the drip lines of the trees noted to be retained the grade shall not be elevated or reduced from existing grade.	
7) If the grade adjacent to a preserved tree is raised such that it could slough or erode into the tree's drip line, it shall be permanently stabilized.	
8) The trees noted to be retained shall be protected from erosion and sedimentation. Clearing operations shall be conducted so as to expose the smallest practical area of soil to erosion for the least possible time. Refer to the project's erosion control plan for more information.	
9) The project shall not install an impervious surface other than those specifically shown on the plans within the drip line of the trees to be retained.	
10) Utility trenches shall be located outside of the drip line of the trees to be retained.	
11) Ongoing Tree Maintenance shall be the responsibility of the land owner. Trees shall be maintained in accordance with ANSI American National Standards Institute's as well as other applicable Federal, State and Local standards pertaining to Tree Care Operations.	
• ANSI Z133 Arboricultural Operations: Safety Requirements • ANSI A300 Part 1 Pruning	



Tree Protection Fencing Detail
Not To Scale
SECTION / PLAN VIEW