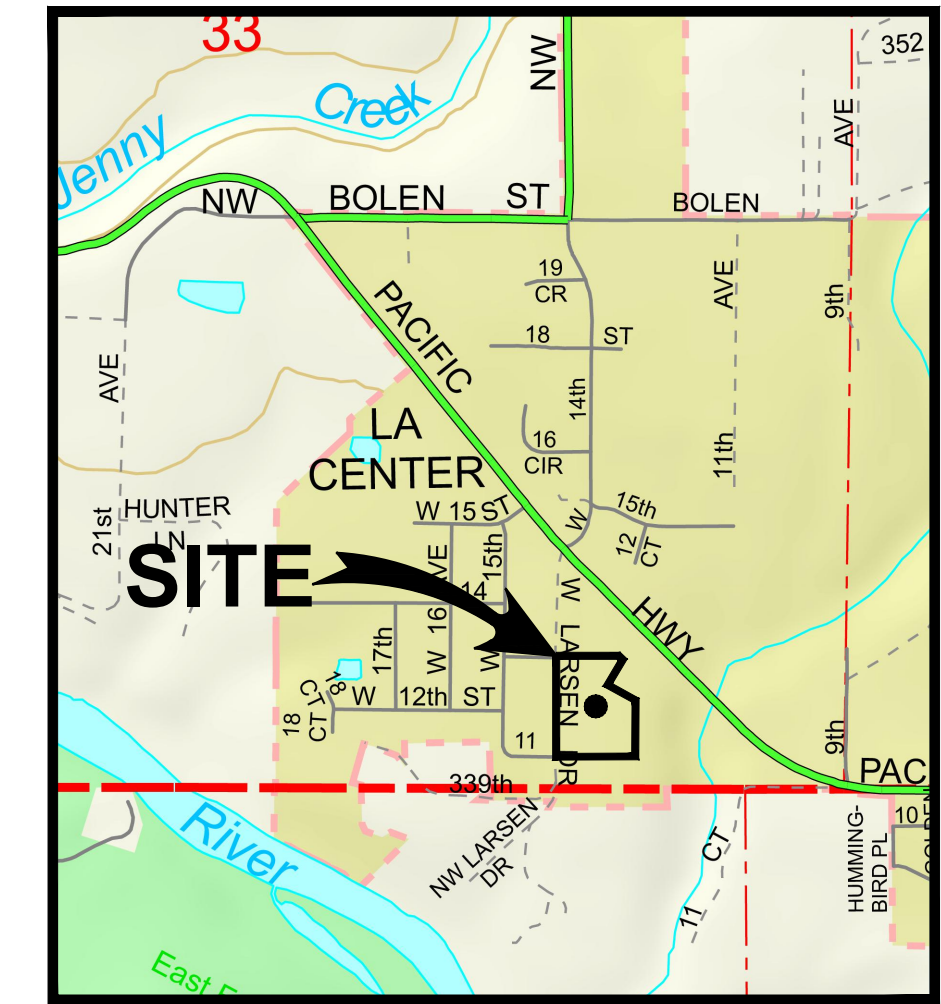
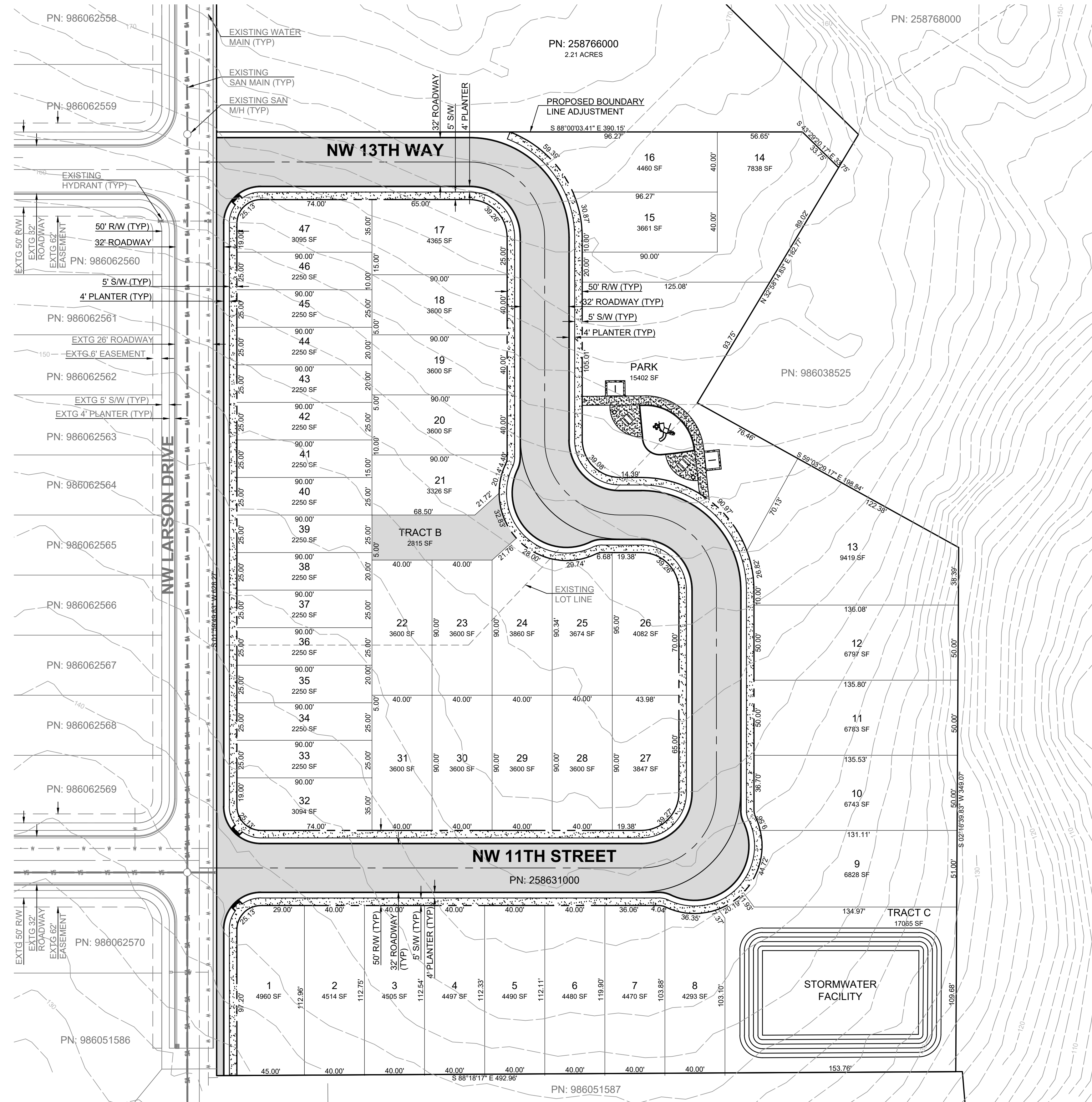


Peterson Subdivision

Located in the SE 1/4, S33, T5N, R1E
La Center, Washington



VICINITY MAP
NOT TO SCALE



GENERAL NOTES

DEVELOPER:
MJS Investors
Contact: Andrew Rockwell
11201 SE 8th St Suite 116
Bellevue, WA 98004

CIVIL ENGINEER:
PLS Engineering
Contact: Travis Johnson, PE
604 W Evergreen Blvd
Vancouver, WA 98660
PH: (360) 944-6519
pm@plsengineering.com

SITE ADDRESS:
Parcel # 258631000
34100 NW Pacific Hwy
La Center, WA 98629

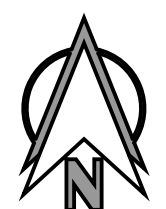
PROPOSED LINETYPE & SYMBOL LEGEND

LINETYPES	SYMBOLS
Edge of Pavement	Catch Basin
Curb Line	Overflow Drain
Proposed Sidewalk	Area Drain w/Sump
Edge of Gravel	Roof Drain
Pavement Sawcut	Sanitary Cleanout
Setback	Sanitary Manhole
Lot Line	Water Hydrant
Storm Line	Water Meter
Storm Roof Drain	Water Backflow Device
Water Main Line	Tee W/TB
Water Service Line	Gate Valve
San Sewer Lateral	Cap W/TB
San Sewer Main	Water Bend W/TB
Road Centerline	
Right-of-Way	
Easement Line	
Retaining Wall	
Contour Line	
Drainage Flow Line	

EXISTING LINETYPE & SYMBOL LEGEND

LINETYPES	SYMBOLS
Storm Sewer Line	Catch Basin
Over Head Power Line	Storm Manhole
Water Line Locate	Curb Inlet
Sanitary Sewer Pipe	Fire Hydrant
Telecomm Utility	Water Valve
Underground Electric	San Sewer MH
Fence	Utility Pole
Centerline	Extg Well
Right of Way	Tel Pedestal
Edge of Pavement	Guy Wire
Curb Line	Mailbox
Edge of Gravel	Extg Trees
Sidewalk	
Pavement Striping	
Lot Line	
Property Boundary	
Contour Line	

Scale 1" = 40'



Sheet Index	
01.	Conceptual Site Plan

Legend	
Proposed Asphalt	
Proposed Concrete w/ Street Construction	

Conceptual Site Plan For:

Peterson Subdivision

A Subdivision Located in The City Of La Center, Washington

Revisions

No.	Description
1	
2	
3	
4	
5	
6	

Project No.	3681
SCALE:	H: 1" = 40' V: N/A
DESIGNED BY:	JMT
DRAFTED BY:	MM
REVIEWED BY:	TGJ

01
01